

47495 CLIPPER STREET
PLYMOUTH, MICHIGAN

INDUSTRIAL FOR LEASE
15,300 Square Feet Available



**SIGNATURE
ASSOCIATES**
KNOW SIGNATURE | KNOW RESULTS

BECK INDUSTRIAL CENTER



PROPERTY FEATURES

- 15,300 square feet available
- 9,500 square feet of office which includes a large lunchroom, large open area and conference room
- Office furniture available for purchase
- 18' clear height
- (1) 10'x12' grade level door and (1) truckwell
- (1) 4-ton crane
- 480 volts
- 32 parking spaces
- Corporate image, turn-key facility
- Easy access to M-14 and I-275
- Lease Rate: \$8.00/sq.ft. NNN



For more information, please contact:

STEVE GORDON
(248) 948 0101
sgordon@signatureassociates.com

DRAKE FILIPPIS
(248) 799 3161
dfilippis@signatureassociates.com

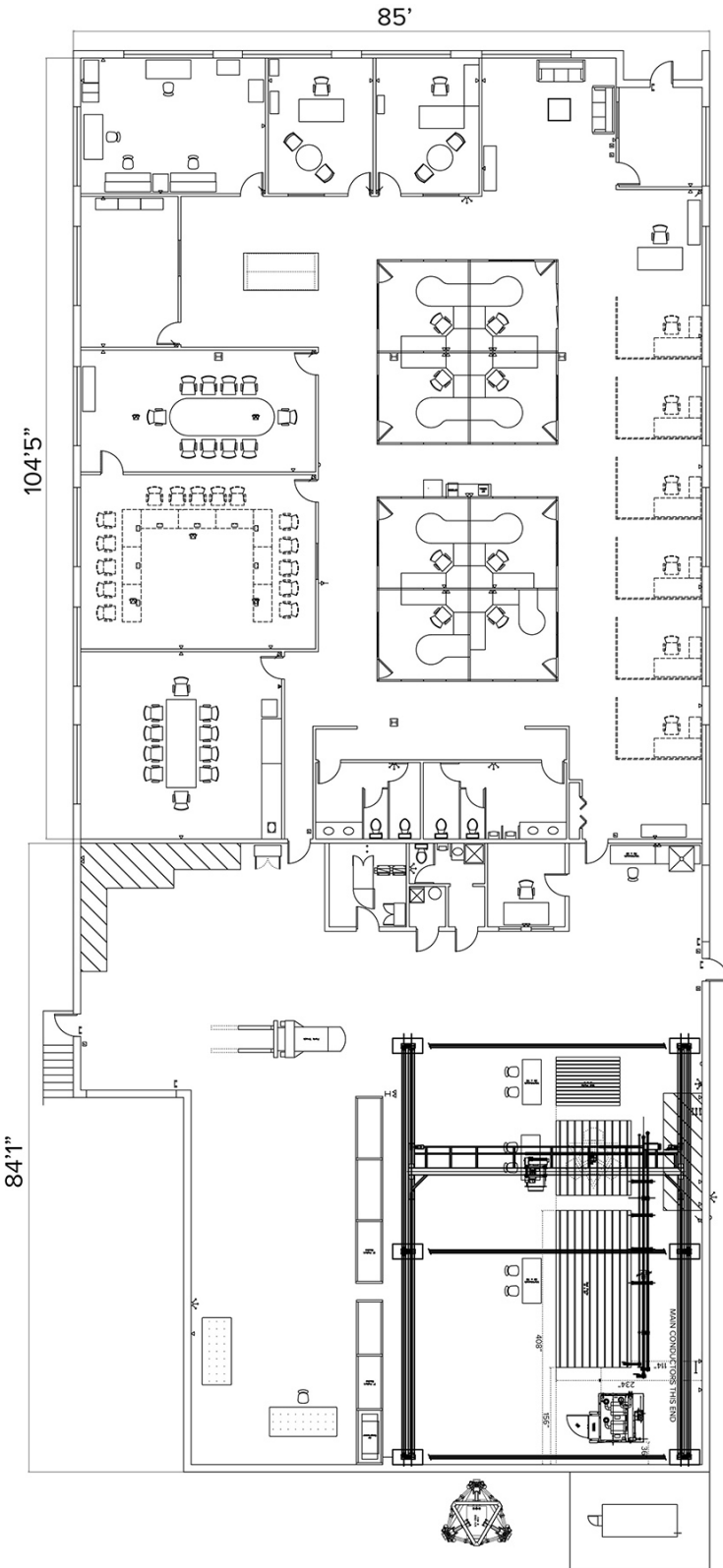
SIGNATURE ASSOCIATES
One Towne Square, Suite 1200
Southfield, MI 48076
www.signatureassociates.com

47495 Clipper Street – Plymouth, Michigan

Industrial For Lease

15,300
Square Feet
AVAILABLE

Floor Plan



For more information, please contact:

STEVE GORDON
(248) 948 0101
sgordon@signatureassociates.com

DRAKE FILIPPIS
(248) 799 3161
dfilippis@signatureassociates.com

SIGNATURE ASSOCIATES
One Towne Square, Suite 1200
Southfield, MI 48076
www.signatureassociates.com

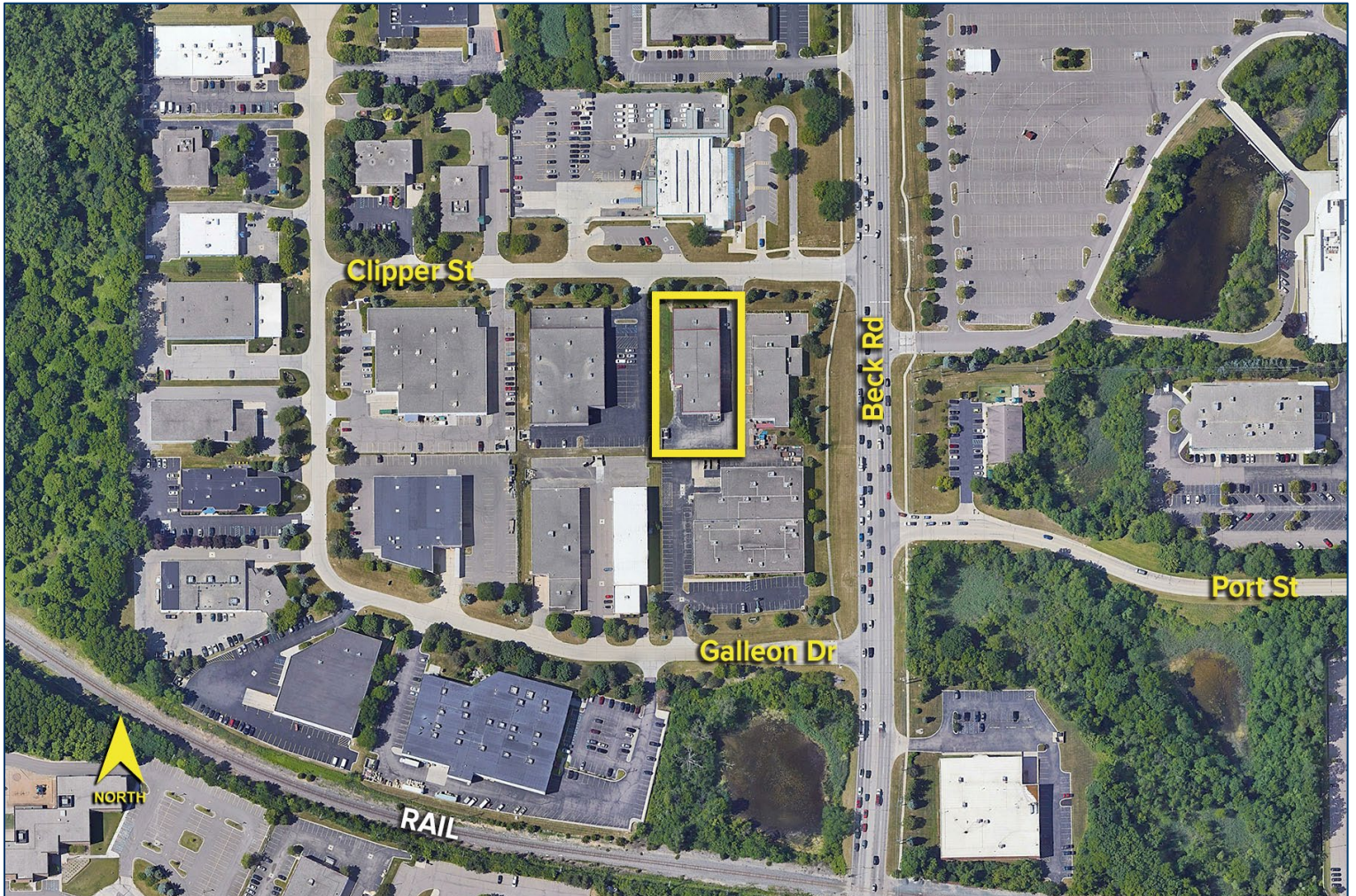
Information is subject to verification and no liability for errors or omissions is assumed. Price is subject to change and listing withdrawal.

47495 Clipper Street – Plymouth, Michigan

Industrial For Lease

15,300
Square Feet
AVAILABLE

Aerial



For more information, please contact:

STEVE GORDON
(248) 948 0101
sgordon@signatureassociates.com

DRAKE FILIPPIS
(248) 799 3161
dfilippis@signatureassociates.com

SIGNATURE ASSOCIATES
One Towne Square, Suite 1200
Southfield, MI 48076
www.signatureassociates.com