

395-447 ELMWOOD DRIVE
TROY, MICHIGAN

INDUSTRIAL FOR LEASE
3,770 – 5,850 Square Feet Available



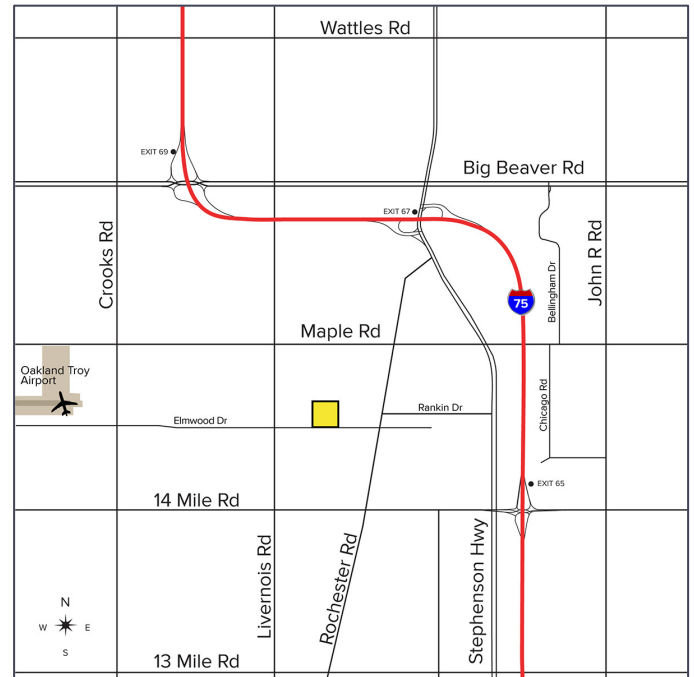
**SIGNATURE
ASSOCIATES**
KNOW SIGNATURE | KNOW RESULTS

MARQUE TROY CORPORATE CENTER



PROPERTY FEATURES

- 3,770 – 5,850 square feet available
- Each unit has been recently renovated
- Centrally located near I-75 between 14 Mile and Rochester Road exits
- Variety of uses possible
- Lease Rate: \$11.25 - \$12.95/sq. ft. Gross



For more information, please contact:

KRIS PAWLOWSKI
(248) 359 3801
kpawlowski@signatureassociates.com

JOHN DROZE
(248) 948 4191
jdroze@signatureassociates.com

SIGNATURE ASSOCIATES
One Towne Square, Suite 1200
Southfield, MI 48076
www.signatureassociates.com

395 – 447 Elmwood Drive – Troy, Michigan

Industrial For Lease

3,770 – 5,850
Square Feet
AVAILABLE

AVAILABILITY

UNIT	TOTAL SF /OFFICE SF	RATE
401	3,770/250	\$11.25/sq. ft. Gross
*411	2,885/300	\$11.25/sq. ft. Gross
*413	3,000/300	\$11.25/sq. ft. Gross
447	4,650/2,000	\$12.95/sq. ft. Gross

*Units 411 & 413 can be combined for a total of 5,850 square feet



For more information, please contact:

KRIS PAWLOWSKI
(248) 359 3801
kpawlowski@signatureassociates.com

JOHN DROZE
(248) 948 4191
jdroze@signatureassociates.com

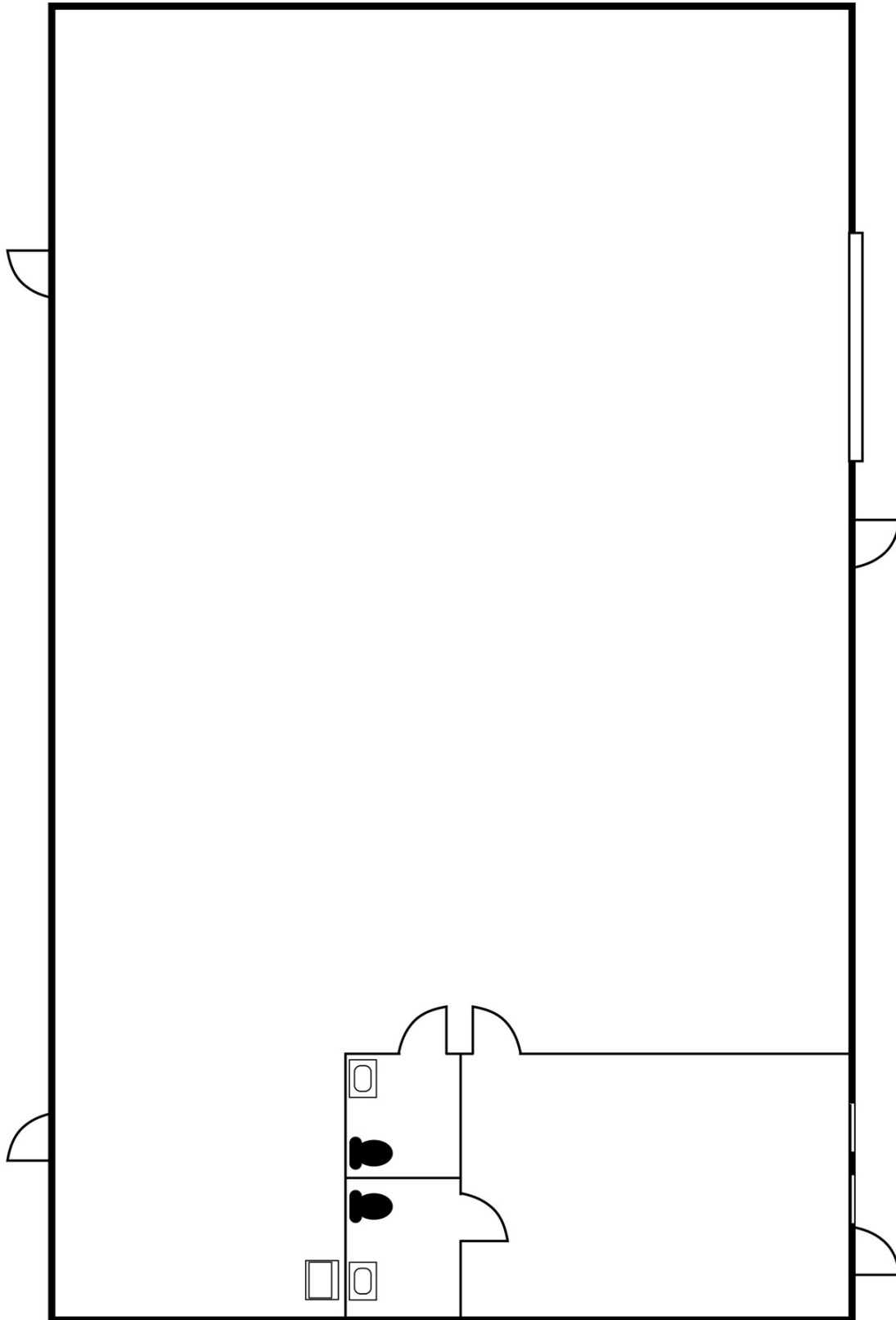
SIGNATURE ASSOCIATES
One Towne Square, Suite 1200
Southfield, MI 48076
www.signatureassociates.com

395 – 447 Elmwood Drive – Troy, Michigan

Industrial For Lease

3,770 – 5,850
Square Feet
AVAILABLE

Floor Plan Unit 401



For more information, please contact:

KRIS PAWLOWSKI
(248) 359 3801
kpawlowski@signatureassociates.com

JOHN DROZE
(248) 948 4191
jdroze@signatureassociates.com

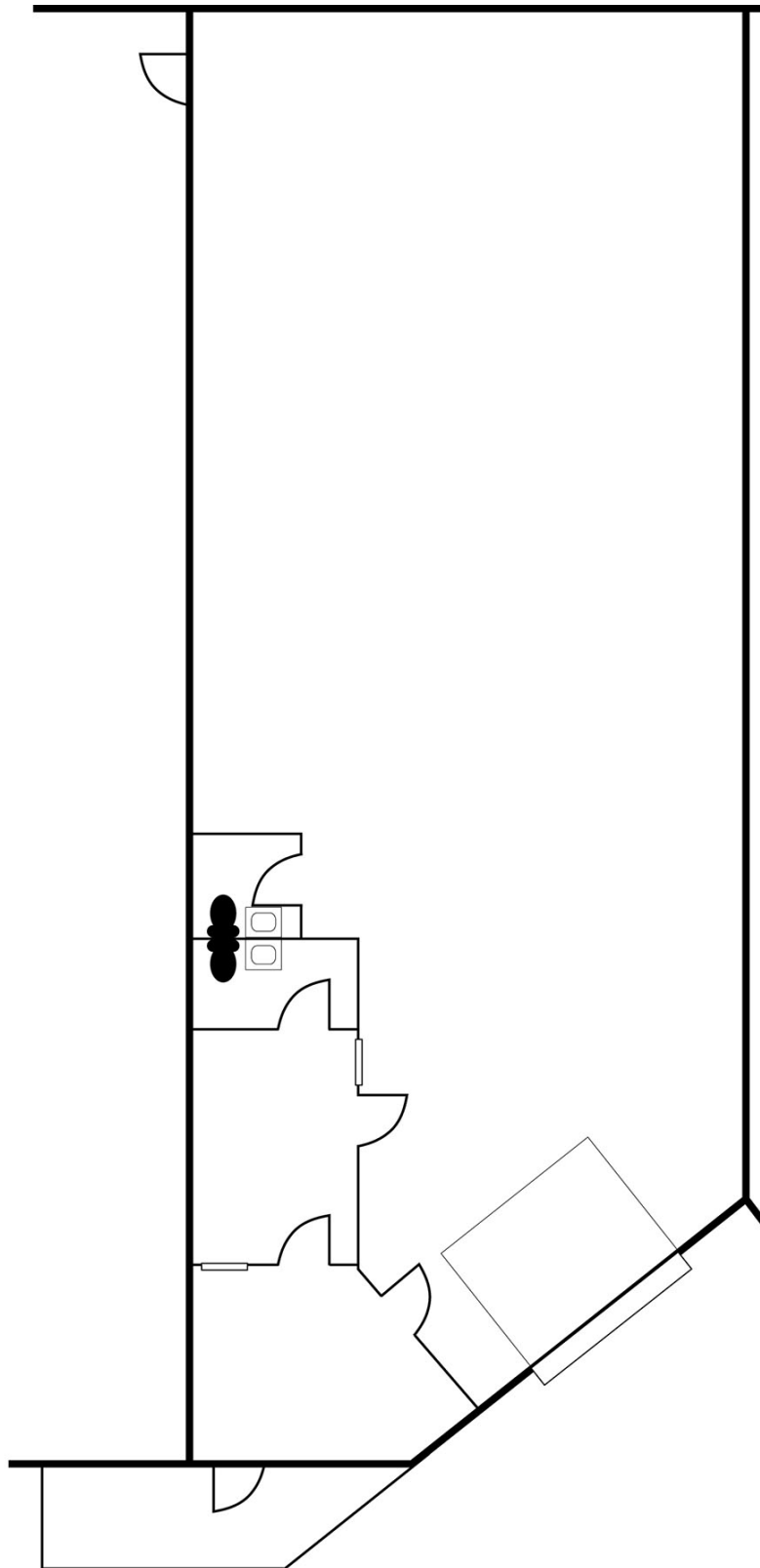
SIGNATURE ASSOCIATES
One Towne Square, Suite 1200
Southfield, MI 48076
www.signatureassociates.com

395 – 447 Elmwood Drive – Troy, Michigan

Industrial For Lease

3,770 – 5,850
Square Feet
AVAILABLE

Floor Plan Unit 411



For more information, please contact:

KRIS PAWLOWSKI
(248) 359 3801
kpawlowski@signatureassociates.com

JOHN DROZE
(248) 948 4191
jdroze@signatureassociates.com

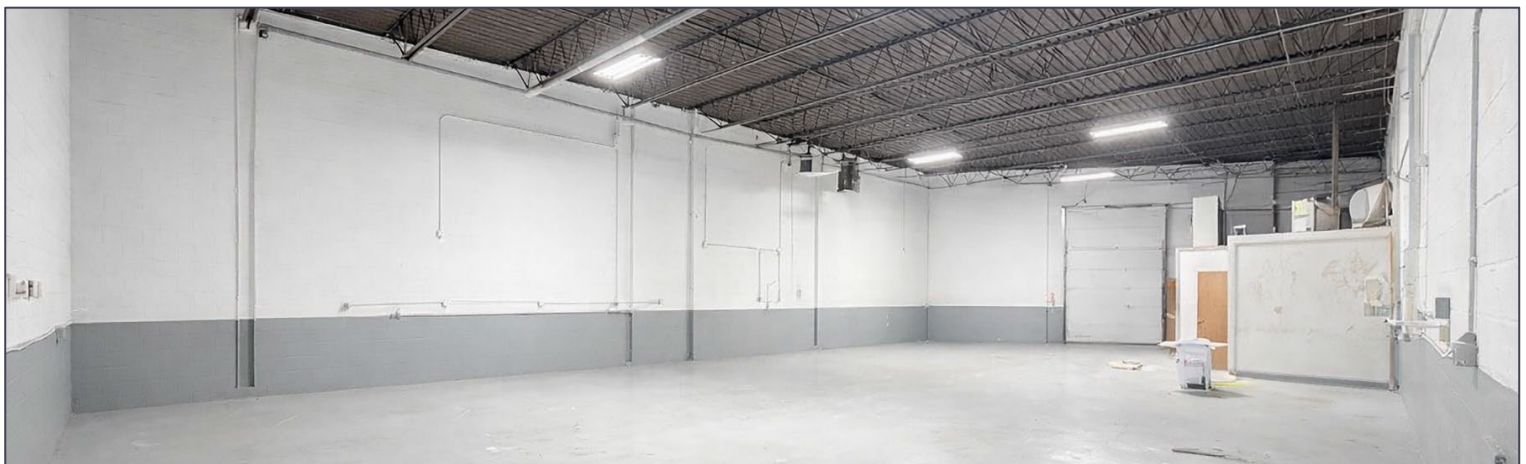
SIGNATURE ASSOCIATES
One Towne Square, Suite 1200
Southfield, MI 48076
www.signatureassociates.com

395 – 447 Elmwood Drive – Troy, Michigan

Industrial For Lease

3,770 – 5,850
Square Feet
AVAILABLE

Interior Photos Unit 411



For more information, please contact:

KRIS PAWLOWSKI
(248) 359 3801
kpawlowski@signatureassociates.com

JOHN DROZE
(248) 948 4191
jdroze@signatureassociates.com

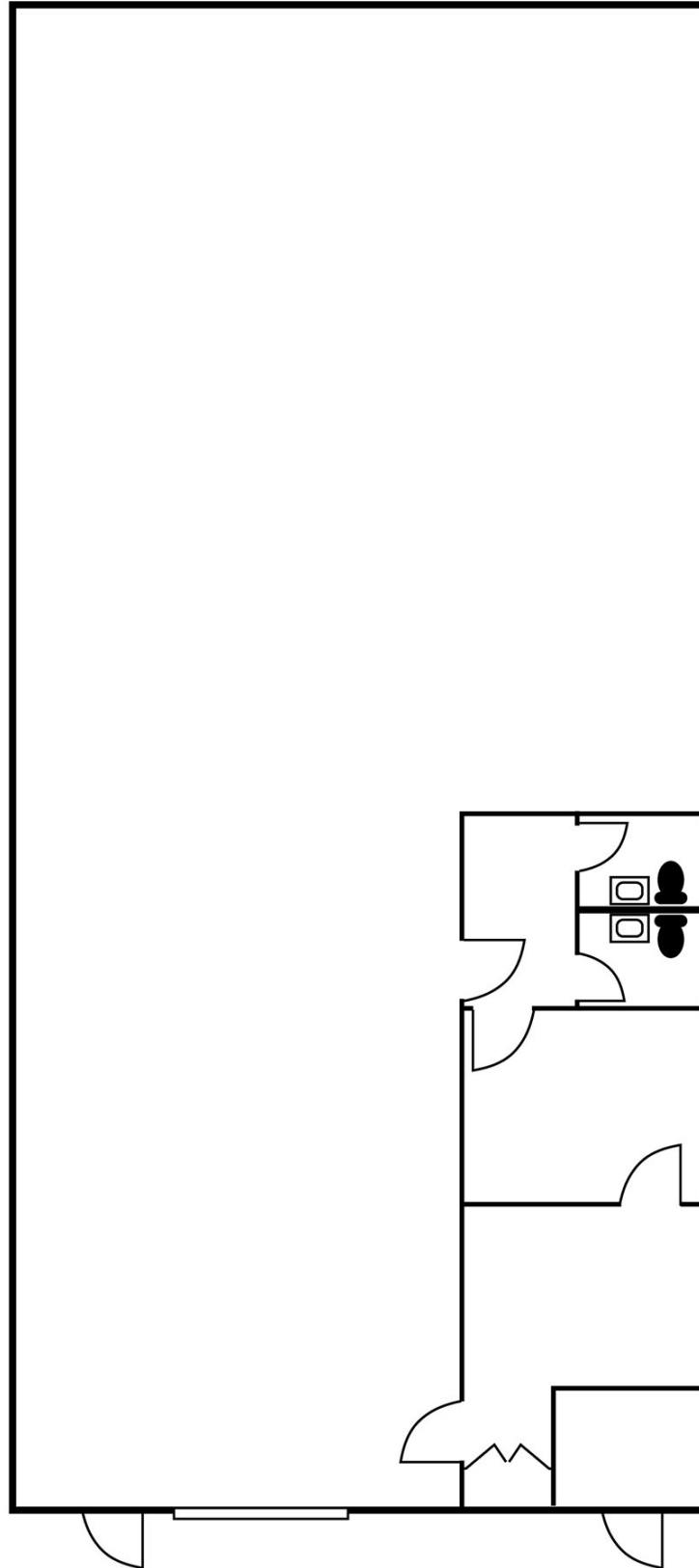
SIGNATURE ASSOCIATES
One Towne Square, Suite 1200
Southfield, MI 48076
www.signatureassociates.com

395 – 447 Elmwood Drive – Troy, Michigan

Industrial For Lease

3,770 – 5,850
Square Feet
AVAILABLE

Floor Plan Unit 413



For more information, please contact:

KRIS PAWLOWSKI
(248) 359 3801
kpawlowski@signatureassociates.com

JOHN DROZE
(248) 948 4191
jdroze@signatureassociates.com

SIGNATURE ASSOCIATES
One Towne Square, Suite 1200
Southfield, MI 48076
www.signatureassociates.com

395 – 447 Elmwood Drive – Troy, Michigan

Industrial For Lease

3,770 – 5,850
Square Feet
AVAILABLE

Interior Photos Unit 413



For more information, please contact:

KRIS PAWLOWSKI
(248) 359 3801
kpawlowski@signatureassociates.com

JOHN DROZE
(248) 948 4191
jdroze@signatureassociates.com

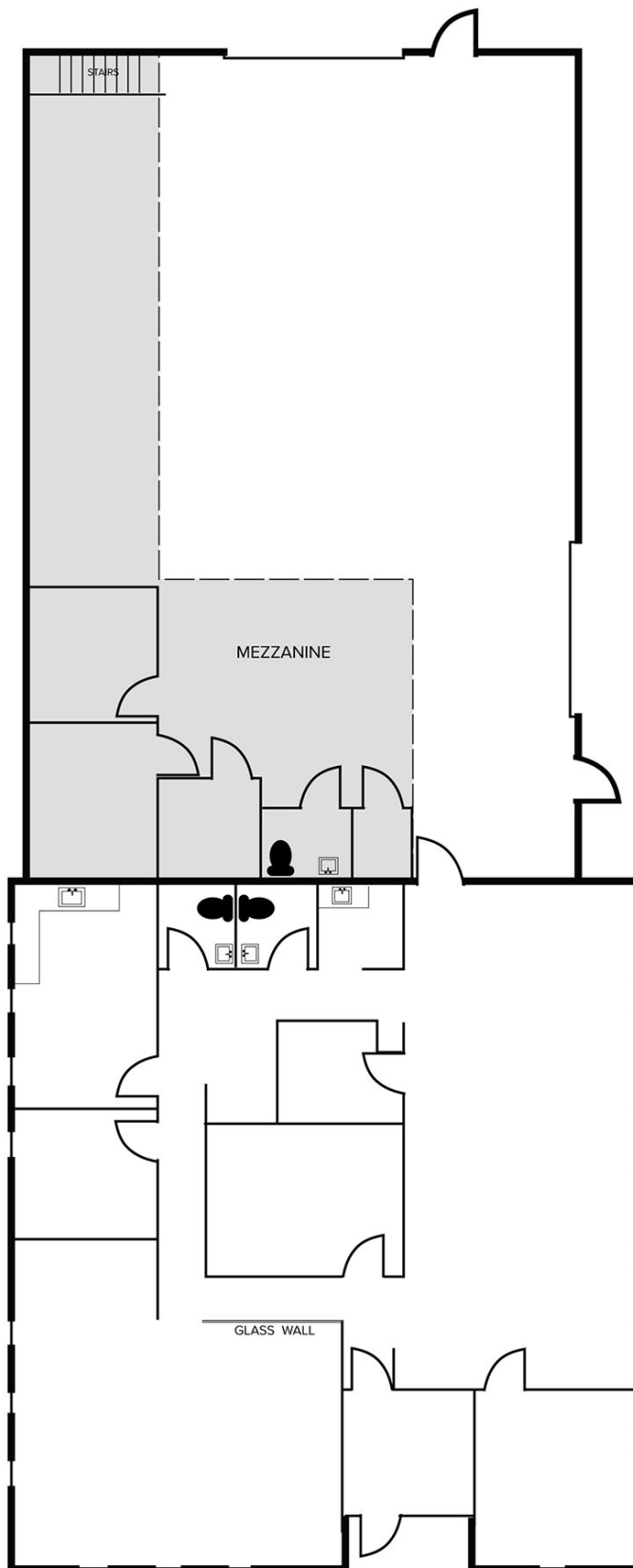
SIGNATURE ASSOCIATES
One Towne Square, Suite 1200
Southfield, MI 48076
www.signatureassociates.com

395 – 447 Elmwood Drive – Troy, Michigan

Industrial For Lease

3,770 – 5,850
Square Feet
AVAILABLE

Floor Plan Unit 447



For more information, please contact:

KRIS PAWLOWSKI
(248) 359 3801
kpawlowski@signatureassociates.com

JOHN DROZE
(248) 948 4191
jdroze@signatureassociates.com

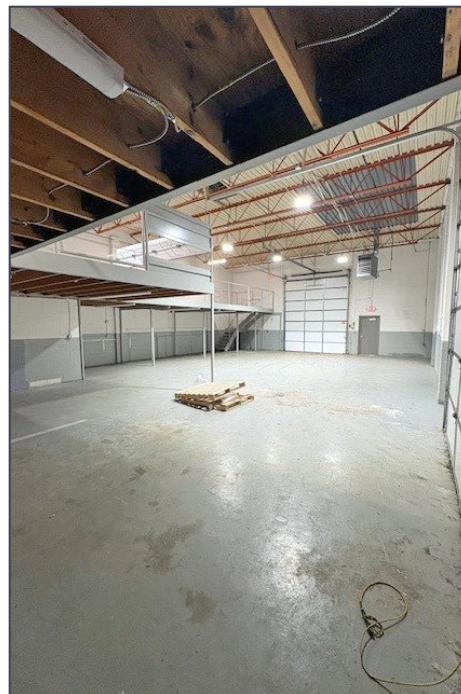
SIGNATURE ASSOCIATES
One Towne Square, Suite 1200
Southfield, MI 48076
www.signatureassociates.com

395 – 447 Elmwood Drive – Troy, Michigan

Industrial For Lease

3,770 – 5,850
Square Feet
AVAILABLE

Interior Photos Unit 447



For more information, please contact:

KRIS PAWLOWSKI
(248) 359 3801
kpawlowski@signatureassociates.com

JOHN DROZE
(248) 948 4191
jdroze@signatureassociates.com

SIGNATURE ASSOCIATES
One Towne Square, Suite 1200
Southfield, MI 48076
www.signatureassociates.com

395 – 447 Elmwood Drive – Troy, Michigan

Industrial For Lease

3,770 – 5,850
Square Feet
AVAILABLE

Aerial



For more information, please contact:

KRIS PAWLOWSKI
(248) 359 3801
kpawlowski@signatureassociates.com

JOHN DROZE
(248) 948 4191
jdroze@signatureassociates.com

SIGNATURE ASSOCIATES
One Towne Square, Suite 1200
Southfield, MI 48076
www.signatureassociates.com