



FOR SALE: THE LUCKETT & FARLEY BUILDING

737 South 3rd Street, Louisville, KY 40202





Designed by some of the most well-known architects, engineers, and interior designers in the region, the Lockett & Farley building has been transformed into one of the most architecturally distinct and recognizable buildings in the Louisville MSA. The building consists of more than 85,000 SF within three stories, a garage, and a finished lower level, which has been renovated to first class office space. The property includes 15 on-site parking spaces and is adjacent to two paid lots with ample availability. Two third-party tenants occupy 12,601 SF. Owner occupies approximately 26,000 SF and is willing to stay as tenant or vacate entirely.

PROPERTY INFO:

Square Footage: 85,000

Lot Size: 1.17 Acres

Asking Price: \$6,300,000

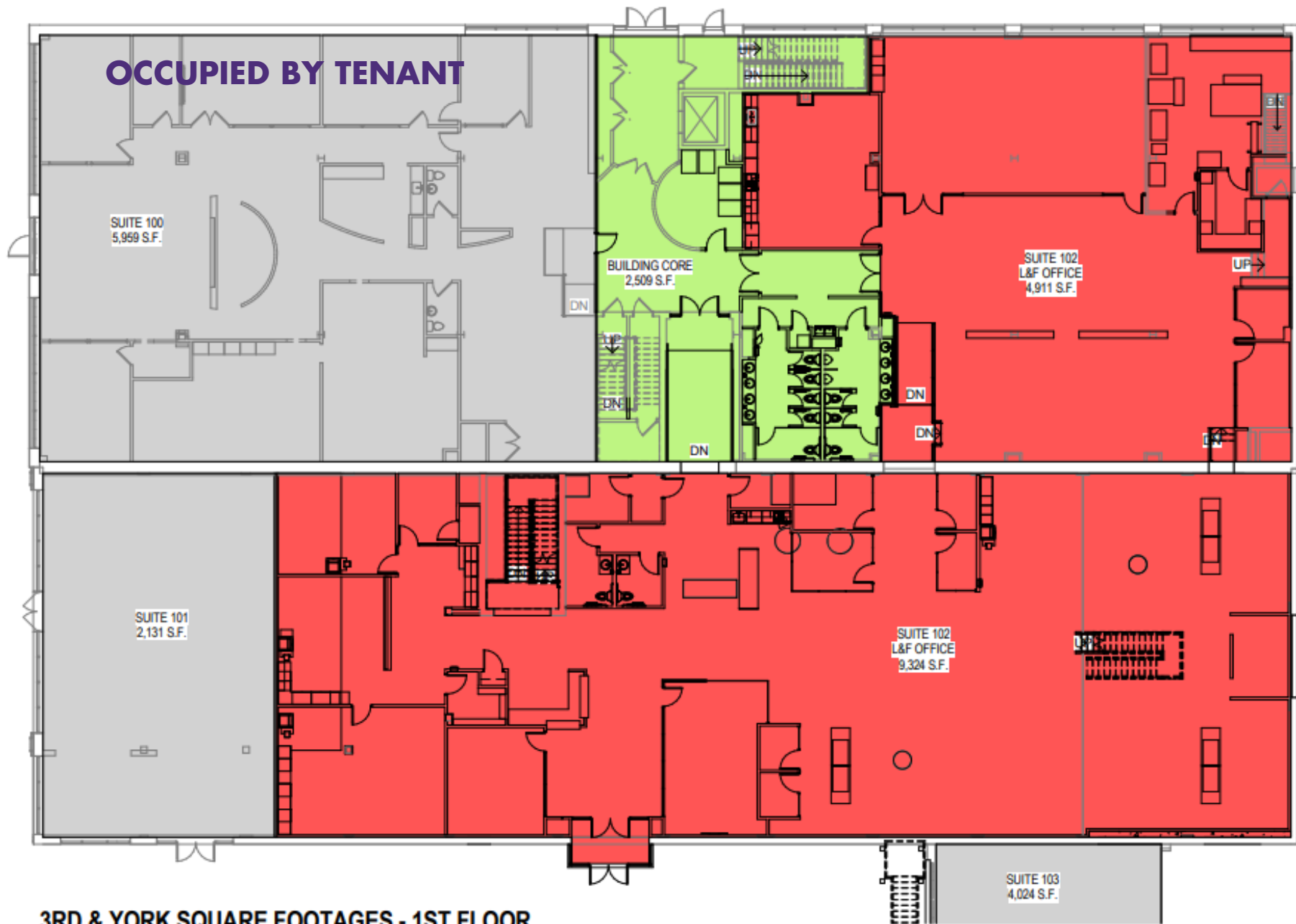
Parking: On-Site & Adjacent

Zoning: PD

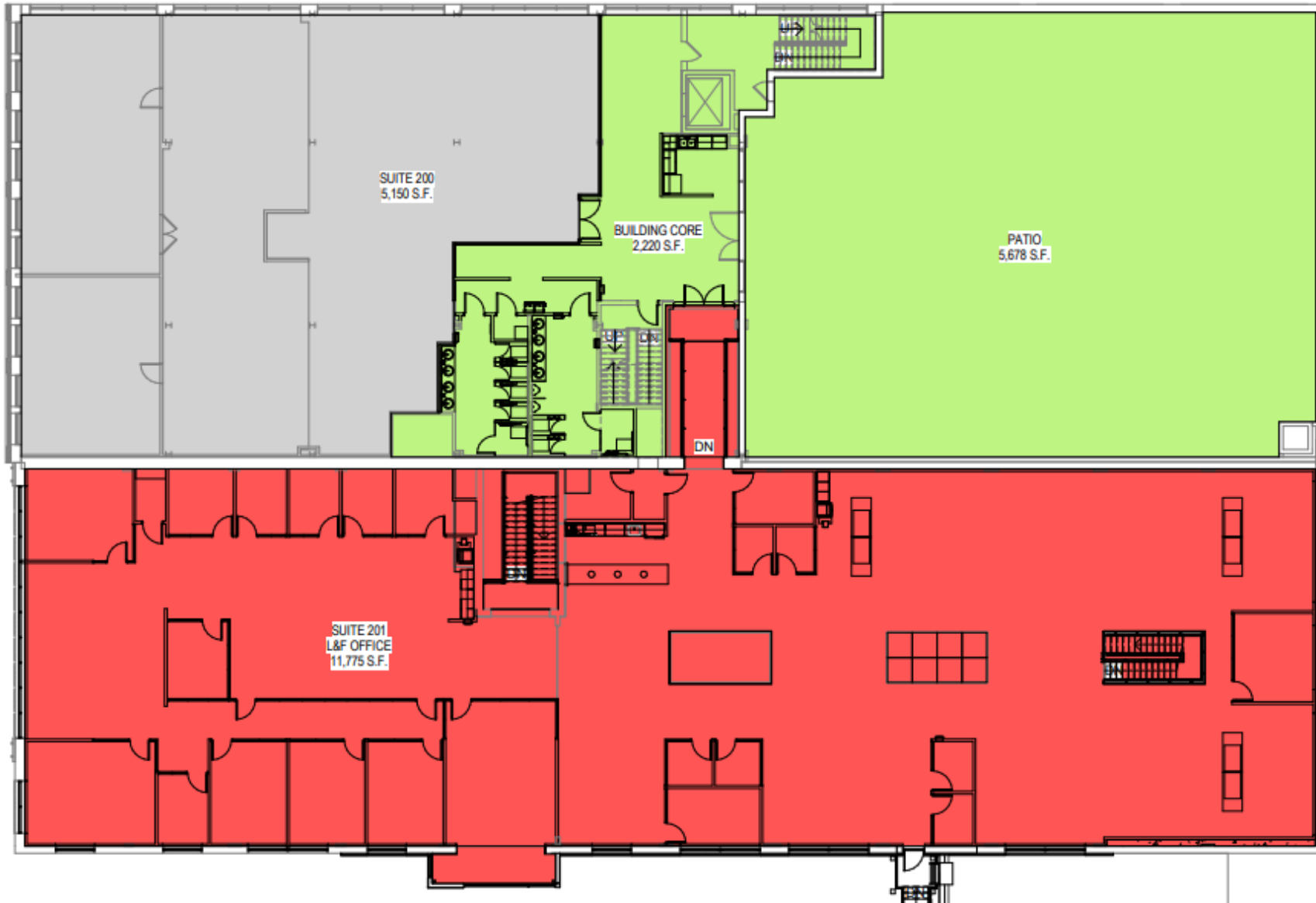




FLOOR PLAN - 1ST FLOOR

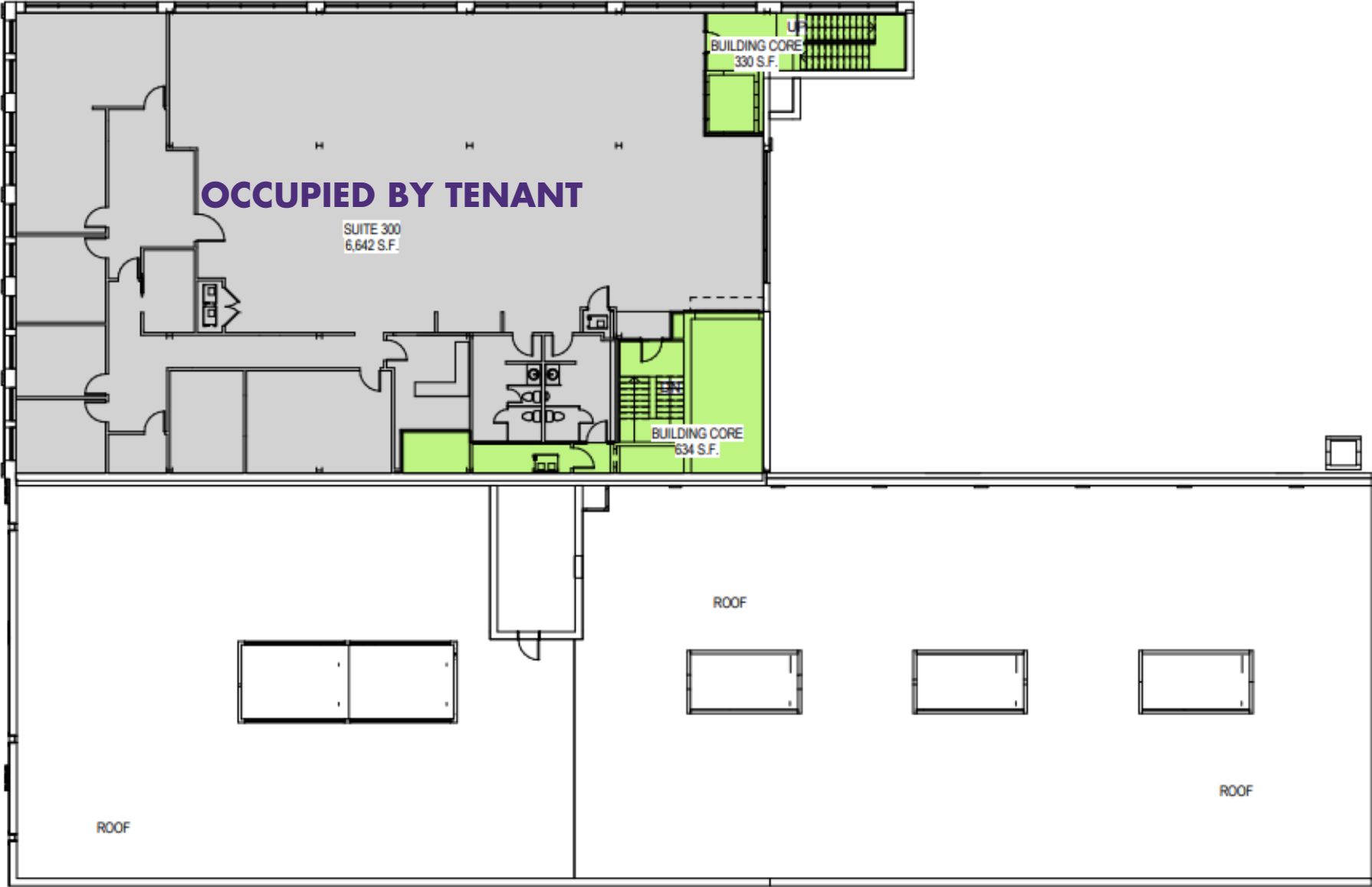


FLOOR PLAN - 2ND FLOOR



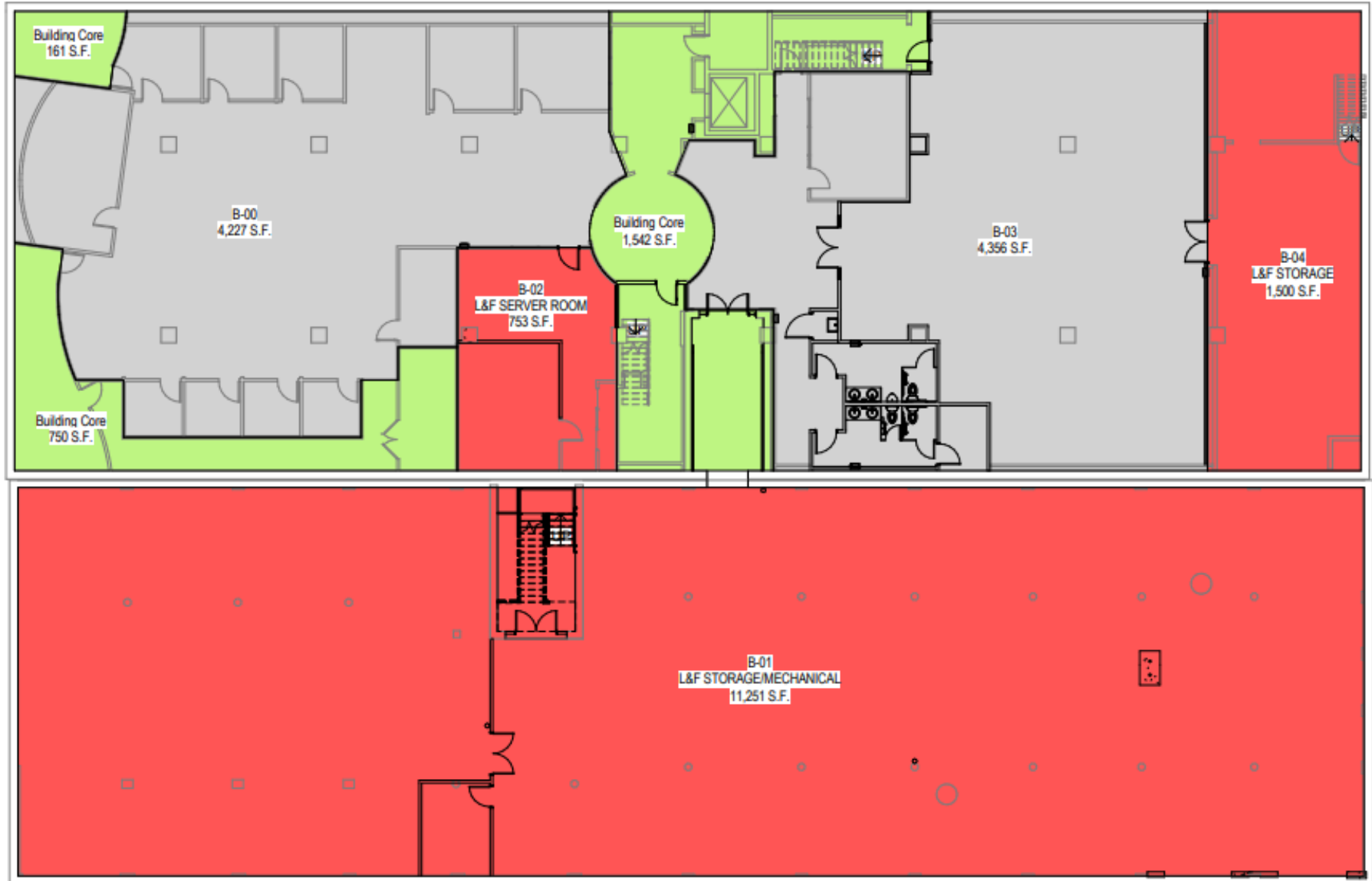
3RD & YORK SQUARE FOOTAGES - 2ND FLOOR

FLOOR PLAN - 3RD FLOOR

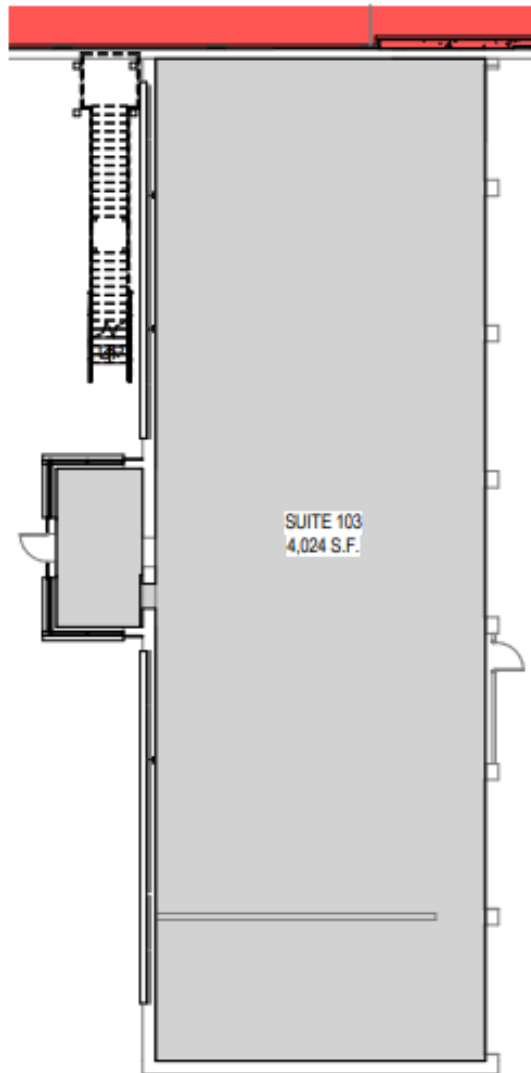


3RD & YORK SQUARE FOOTAGES - 3RD FLOOR

FLOOR PLAN - LOWER LEVEL



3RD & YORK SQUARE FOOTAGES - LOWER LEVEL



FLOOR PLAN COLOR KEY



**Lockett & Farley Space
(Includes Storage Area
in Lower Level)**



**Vacant Unless Noted
on Plan**



Common Area

SURROUNDING AREA





JENNY JOHNSTON
EXECUTIVE VICE PRESIDENT

JENNY@PRGPROPERTY.COM
502-365-3840 [O]



ROBERT SCHOLTZ
SENIOR ASSOCIATE

ROBERT@PRGPROPERTY.COM
502-365-3840 [O]



This information has been obtained from sources believed reliable. We have not verified it and make no guarantee, warranty or representation about it. Any projections, opinions, assumptions or estimates used are for example only and do not represent the current or future performance of the property.