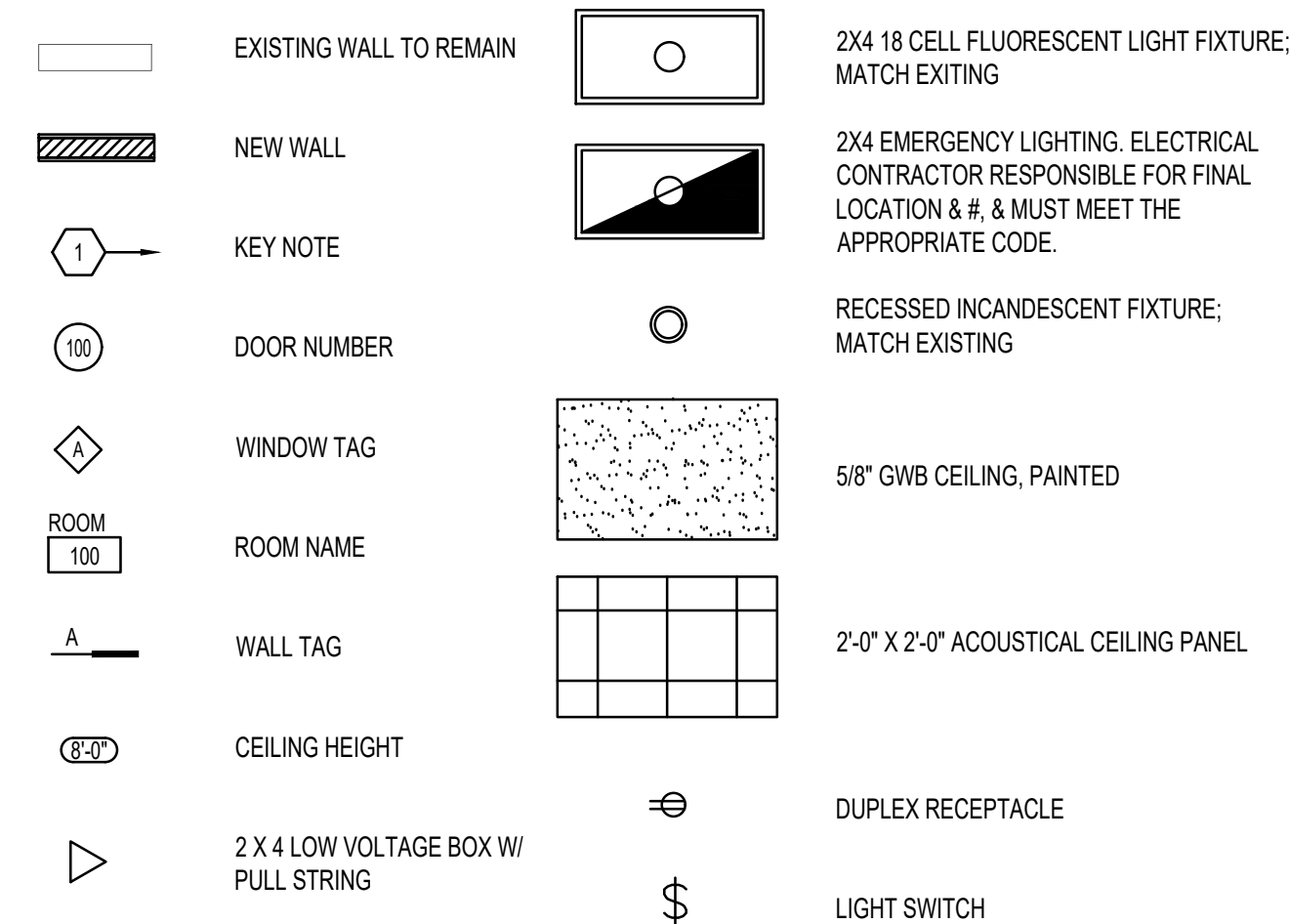


6 OVERALL SECOND FLOOR PLAN
 A1.1 SCALE: 1"=30'-0"

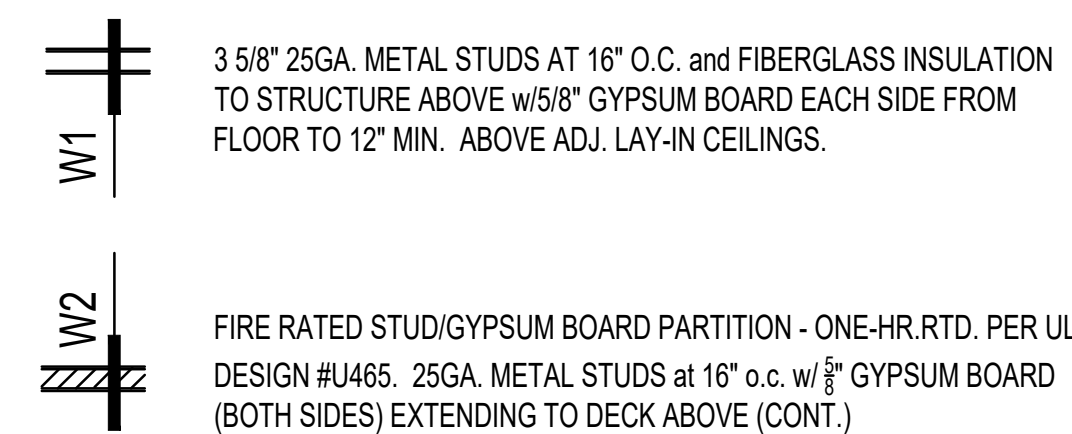
**RENOVATION FLOOR PLAN
 GENERAL NOTES**

- A. ALL DIMENSIONS ARE GIVEN FROM FACE OF G/WB TO FACE OF G/WB, OR FROM CENTERLINE OF COLUMN GRID TO FACE OF STUD, UNLESS NOTED OTHERWISE. REGARDING EXISTING CONDITION, NOTE THAT SOME DIMENSIONS ARE PLUS OR MINUS AND MUST BE CONFIRMED IN THE FIELD BY THE CONTRACTOR PRIOR TO PARTITION ERECTION. ANY LAYOUT DEVIATION MUST BE APPROVED BY THE ARCHITECT.
- B. DO NOT SCALE DRAWINGS. IF DIMENSIONS ARE IN QUESTION, THE CONTRACTOR IS RESPONSIBLE FOR OBTAINING CLARIFICATION FROM THE ARCHITECT BEFORE CONTINUING WITH THE WORK.
- C. IN THE EVENT OF ANY DISCREPANCIES FOUND IN THE DRAWINGS, OR CONFLICTS BETWEEN THE ARCHITECTURAL DRAWINGS AND THOSE OF THE ENGINEERS, THE CONTRACTOR SHALL BE REQUIRED TO NOTIFY THE ARCHITECT BEFORE PROCEEDING WITH THE WORK.
- D. ALTHOUGH NOTES MAY BE GIVEN ONLY ONCE, MANY NOTES ARE TYPICAL FOR SIMILAR DETAILS AND CONDITIONS.
- E. THE CONTRACTOR SHALL MAINTAIN FIRE RATINGS OF EXISTING PARTITIONS AT ALL TIMES DURING DEMOLITION AND CONSTRUCTION. FILL ALL VOIDS IN NEW AND EXISTING FIRE RESISTANCE RATED PARTITIONS WITH UL FIRE RESISTANCE RATED FIRE STOP ASSEMBLY AS REQUIRED TO MAINTAIN THE FIRE RATING INDICATED.
- F. AREAS DISTURBED BY THE REMOVAL OF EXISTING CONSTRUCTION ARE TO BE PATCHED TO MATCH THE SURROUNDING FINISH, OR CONDITIONED TO RECEIVE NEW FINISH.
- G. VERIFY THE LOCATION OF ALL EQUIPMENT AND VERIFY SIZES, WALL OPENINGS, AND SUPPORT REQUIREMENTS WITH MANUFACTURER. PROVIDE OPENINGS, BRACING, AND REINFORCEMENT FOR EQUIPMENT AS REQUIRED BY MANUFACTURER.
- H. ALL DOORS ARE TO BE LOCATED 4" FROM ADJACENT WALL OR COUNTER, OR CENTERED IN WALL U.O.N.
- I. ALL FLOORING TRANSITIONS ARE TO OCCUR BENEATH THE CENTER OF THE DOOR.
- J. PROVIDE IN-WALL WOOD BLOCKING FOR ALL WALL MOUNTED EQUIPMENT, INCLUDING BUT NOT LIMITED TO: WALL CABINETS, DOOR STOPS, TELEVISION MOUNTS, COAT RODS, MAJOR ART WORK ITEMS, AND TOILET ACCESSORIES.
- K. CONTRACTOR IS TO USE THE MANUFACTURER'S RECOMMENDED INSTALLATION METHODS AND MATERIALS FOR ALL FINISHES. PREPARE ALL SUBSTRATES TO RECEIVE NEW FINISHES PER THE FINISH MANUFACTURER'S RECOMMENDATIONS.
- L. REWORK EXISTING SPRINKLER HEADS & HVAC SYSTEM AS REQUIRED FOR NEW WORK. INSTALL NEW SPLIT SYSTEM IN SUITE 240. RE-USE/REWORK EXISTING HEAT PUMP FOR SUITE 245.
- M. G.C. TO RE-USE EXISTING FUNCTIONAL 2 X 4 LIGHT FIXTURES AND RELOCATE TO NEW POSITIONS IN RCP.
- N. EXTEND ELECTRICAL FROM COMMON METER FOR SUITE 240. PROVIDE NEW ELECTRICAL SERVICE FROM NEW METER FOR SUITE 245.
- O. REMOVE STORED EXISTING WORK STATIONS AND CONSTRUCTION MATERIALS.
- P. RE-USE EXISTING FLOOR TILE AND CEILING PANELS IF IN GOOD CONDITION. REPAIR ALL WALLS IN SUITE 240.

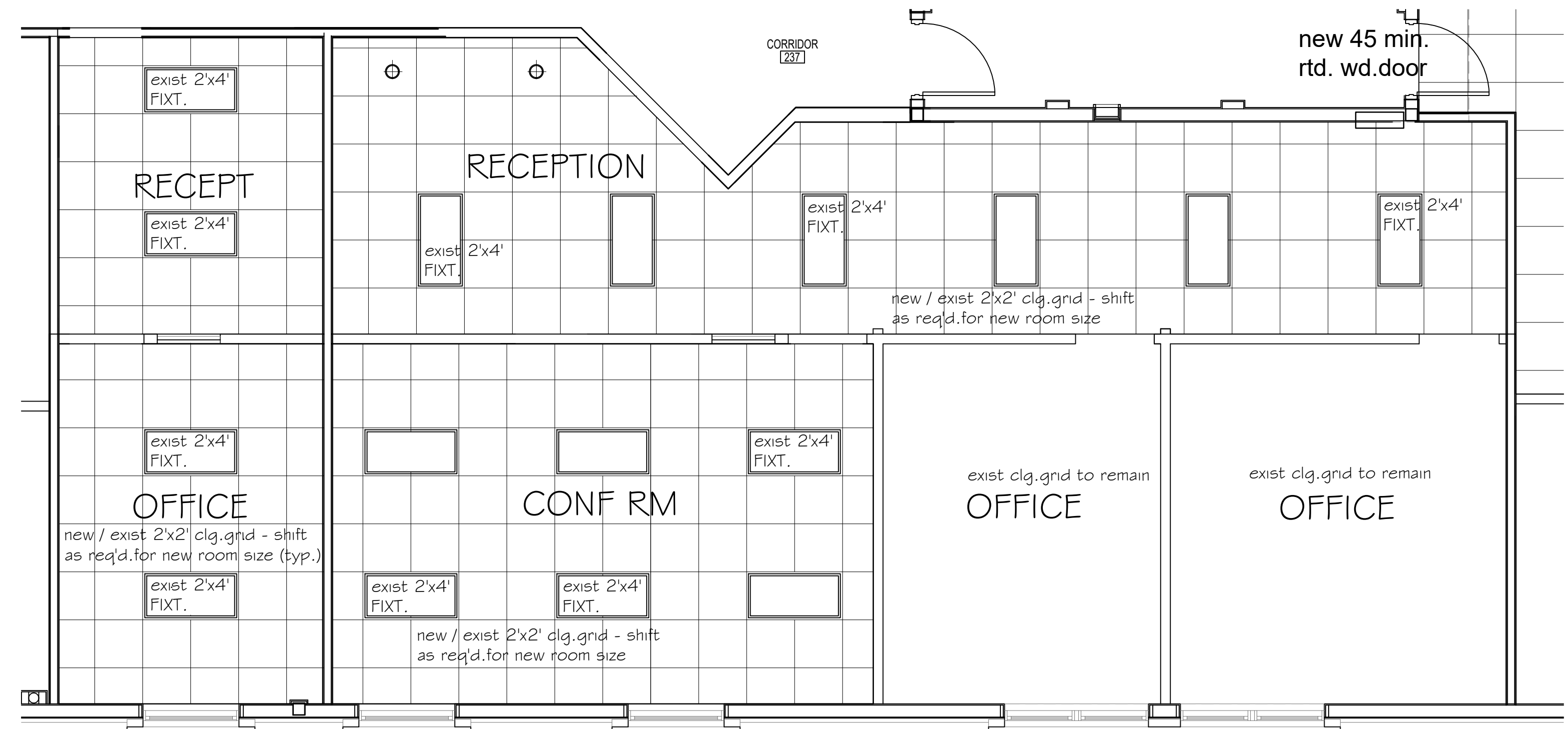
RENOVATION PLAN LEGEND



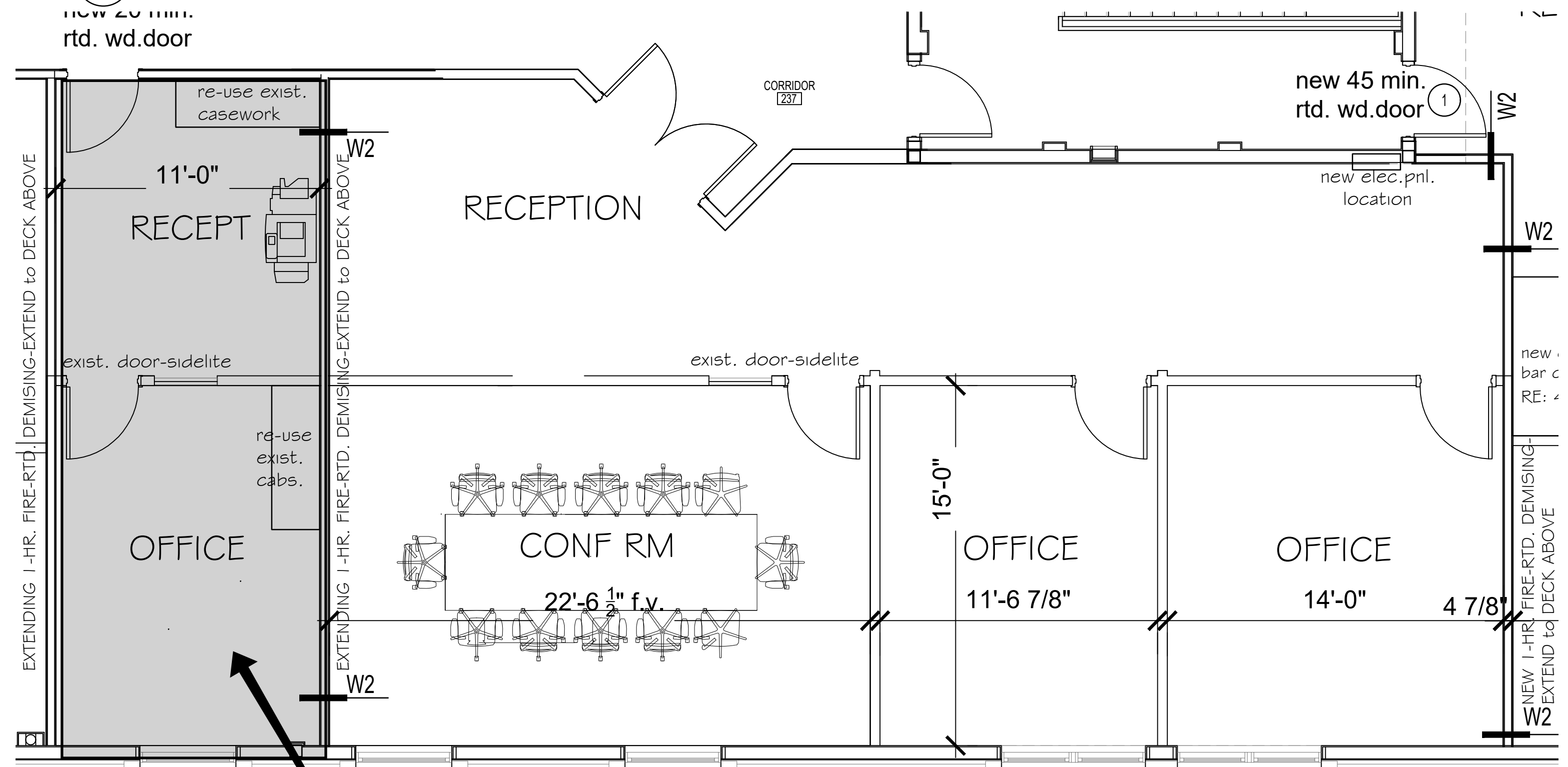
WALL TYPE LEGEND



**OCCUPANCY - BUSINESS (B)
 CONSTRUCTION TYPE 2B
 fully-sprinklered bldg.
 1833 SF tenant suites**



2 RENOVATION REFLECTED CEILING PLAN
 A1.1 SCALE: 1/4"=1'-0"



1 RENOVATION FLOOR PLAN
 A1.1 SCALE: 1/4"=1'-0"

Optional Reduction Area

JOB NUMBER:



**SUITE 240 / 245 TENANT FINISH
 2nd FLR. LANDIS LAKES OFFICE BLDG.**

PROJECT TITLE

DATE:	5-24-2022
BY:	
CKD:	
REVISIONS:	

FLOOR / CLG. PLANS

A-1.1