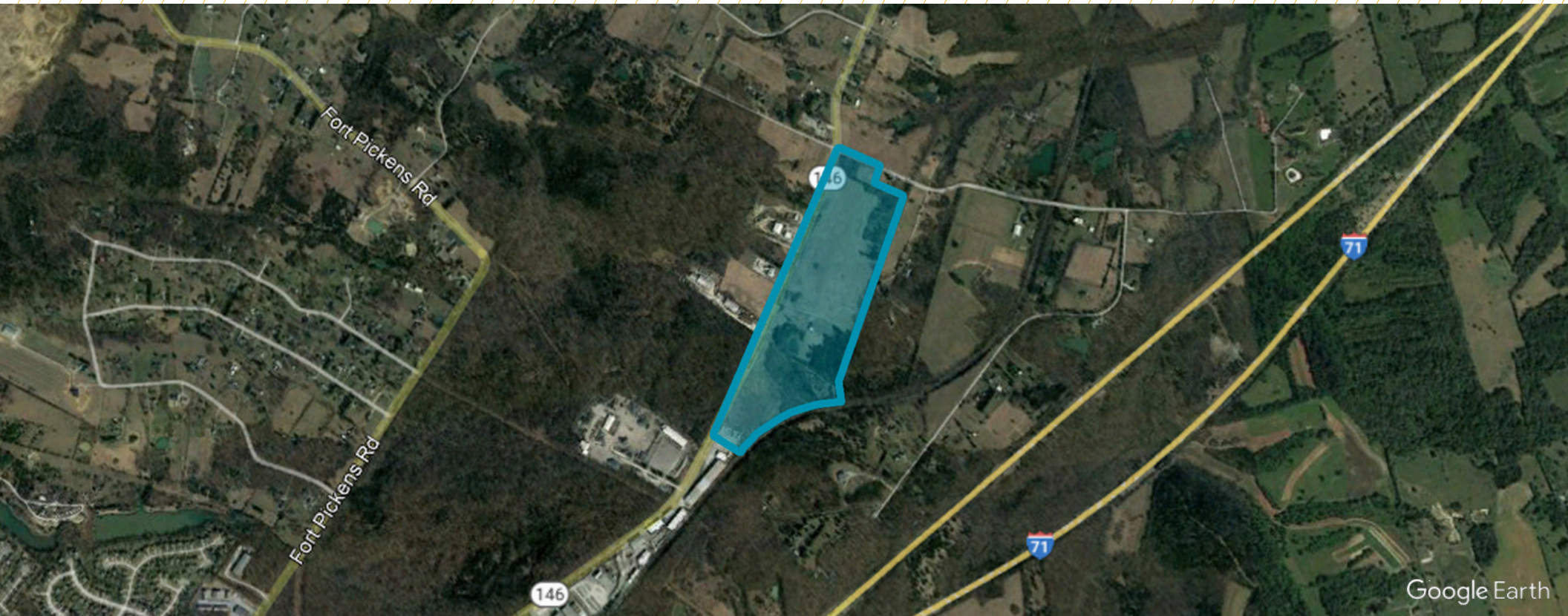


FOR SALE
±56 ACRES



2910 EAST HIGHWAY 146

LAGRANGE, KY 40031

DRIVE TIME MAP

Land for sale in Oldham county, just outside of downtown LaGrange. The site has potential for up to 475,000 sf of industrial development. The site is 3 miles from I-71, and is located 25 miles from Louisville.



3,995
POPULATION
Within 1 Mile



\$87,464
AVG. HH INCOME
Within 1 Mile



2.56
AVG. HH SIZE
Within 1 Mile



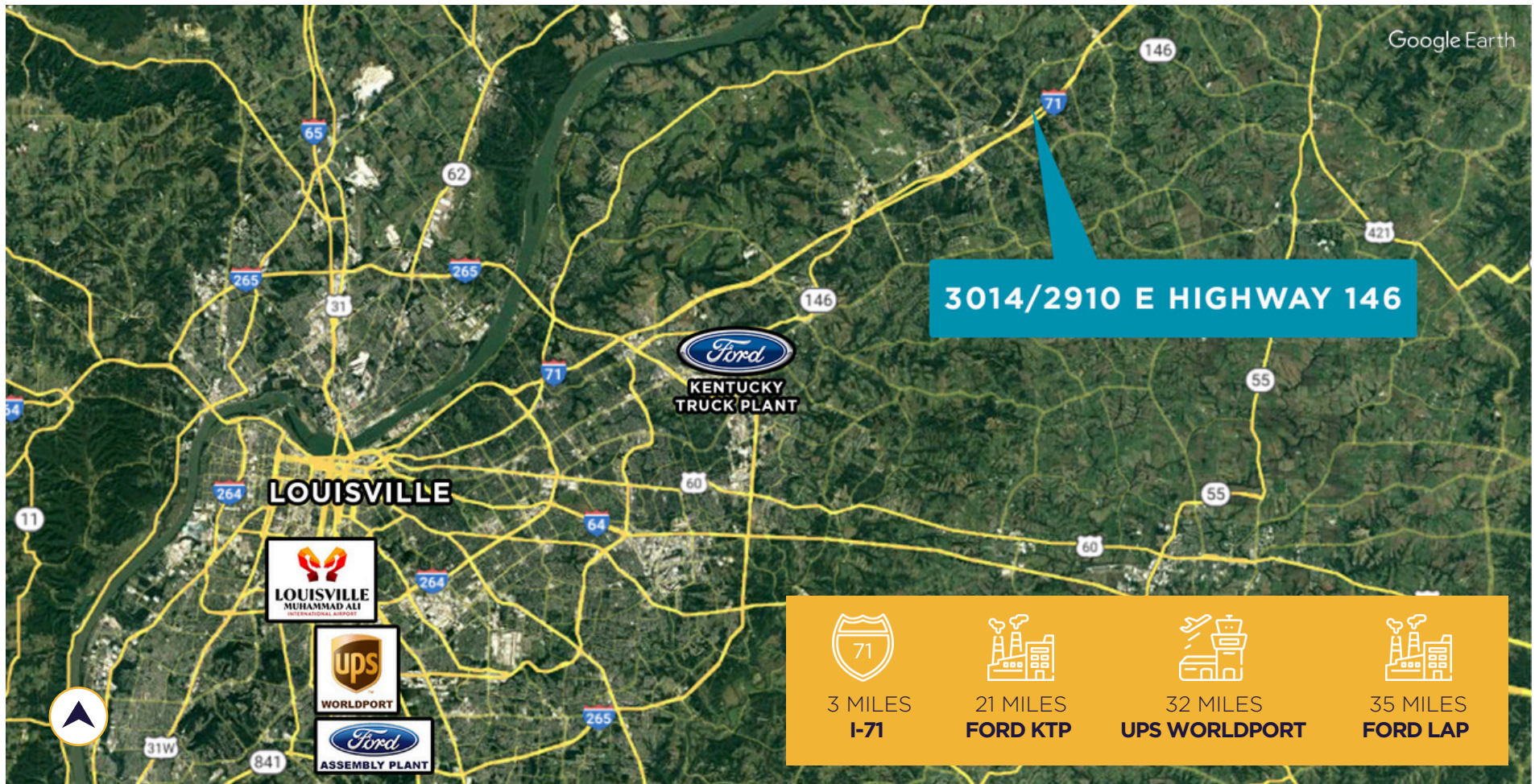
41.3
AVG. AGE
Within 1 Mile

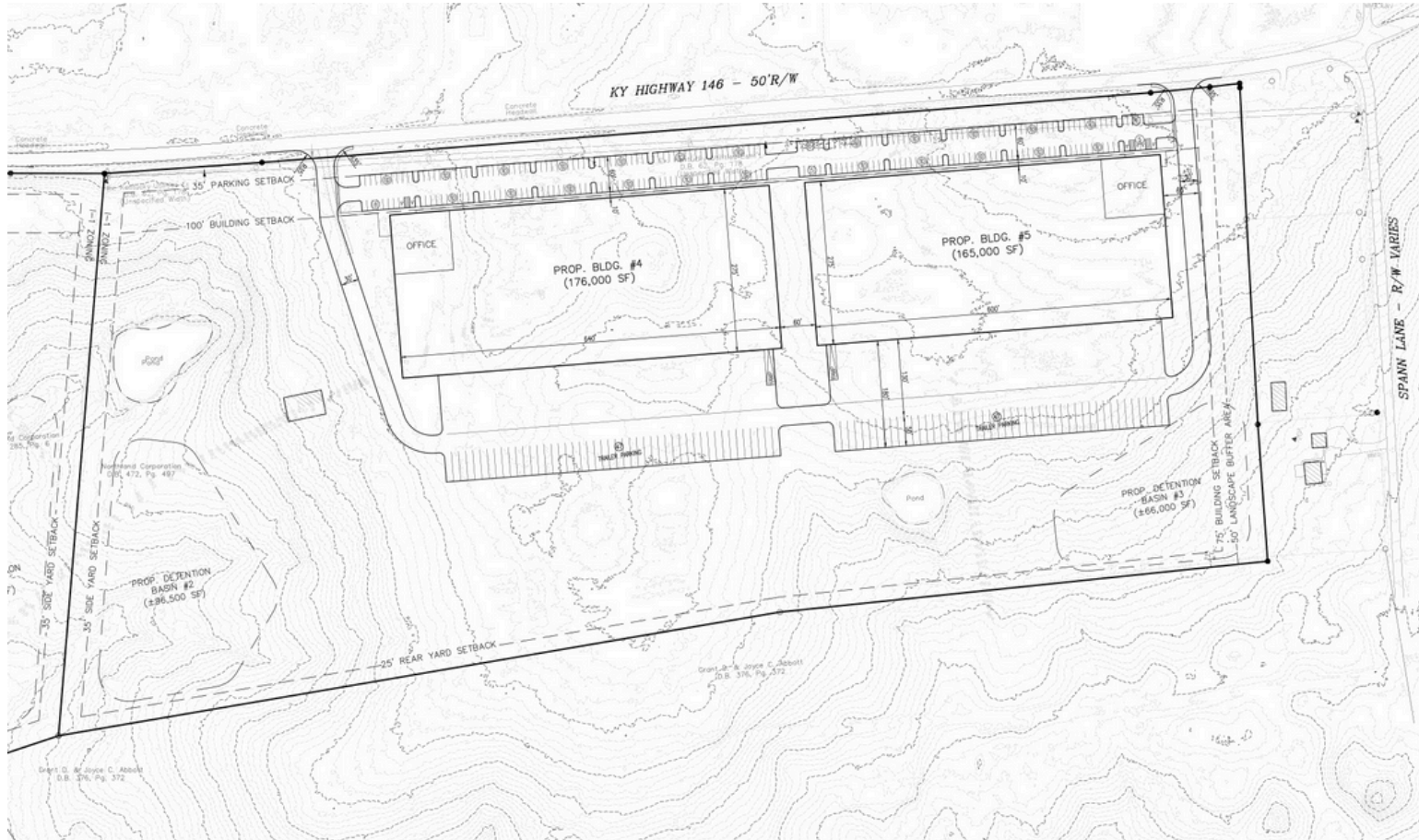
23,372
POPULATION
Within 3 Miles

\$117,872
AVG. HH INCOME
Within 3 Miles

2.73
AVG. HH SIZE
Within 3 Miles

39.1
AVG. AGE
Within 3 Miles





SITE PLAN
±475,000 SF



SITE PLAN
±475,000 SF

CONTACT INFORMATION

ROBERT B. WALKER, SIOR, CCIM

rwalker@commercialkentucky.com
1+ 502 719 3254

GREG CHARMOLI

gcharmoli@commercialkentucky.com
1+ 502 719 3238

JAKE F. MILLS, SIOR

jmills@commercialkentucky.com
1+ 502 719 3252



©2025 Cushman & Wakefield. All rights reserved. The information contained in this communication is strictly confidential. This information has been obtained from sources believed to be reliable but has not been verified. NO WARRANTY OR REPRESENTATION, EXPRESS OR IMPLIED, IS MADE AS TO THE CONDITION OF THE PROPERTY (OR PROPERTIES) REFERENCED HEREIN OR AS TO THE ACCURACY OR COMPLETENESS OF THE INFORMATION CONTAINED HEREIN, AND SAME IS SUBMITTED SUBJECT TO ERRORS, OMISSIONS, CHANGE OF PRICE, RENTAL OR OTHER CONDITIONS, WITHDRAWAL WITHOUT NOTICE, AND TO ANY SPECIAL LISTING CONDITIONS IMPOSED BY THE PROPERTY OWNER(S). ANY PROJECTIONS, OPINIONS OR ESTIMATES ARE SUBJECT TO UNCERTAINTY AND DO NOT SIGNIFY CURRENT OR FUTURE PROPERTY PERFORMANCE.

Independently Owned & Operated / A Member of the Cushman & Wakefield Alliance