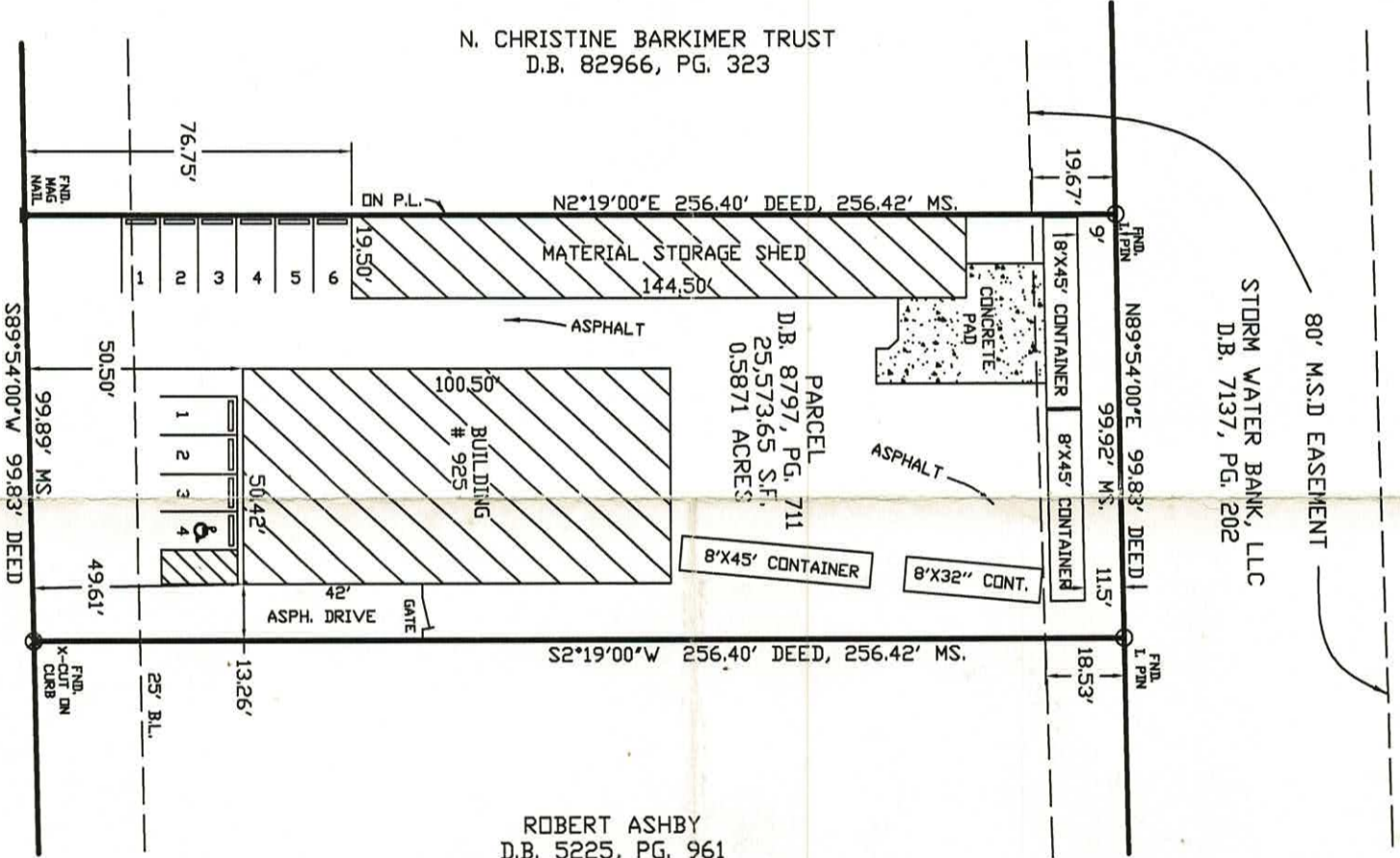
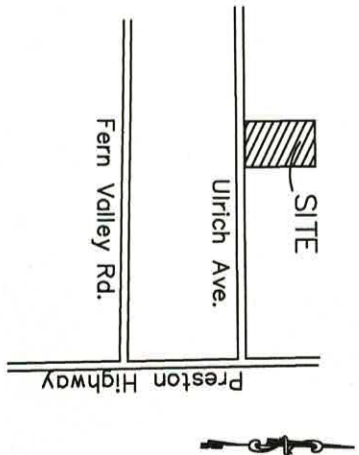


**NOTES**  
 The basis of bearings for this plat is S 89°54'00" W, per minor plat #290-86, D.B. 5617, Pg. 473 of record in the Office of the Clerk of Jefferson County, Kentucky.  
 The parcel shown on this plat is subject to all legal easements, right-of-ways and restrictions of record, apparent or not.



925 ULRICH AVE. 40'R/W  
 PER P.B. 5, PG. 36

- MONUMENT LEGEND**
- Set 1/2" Rebar, 18" long w/Cap
  - Stamped "ROSENBAUM, P.L.S. #2600"
  - Found Iron Pin w/ No Cap
  - ▲ Found mag nail



**LAND SURVEYOR'S CERTIFICATE**

I hereby certify that this plat and survey were made under my supervision and that the angular and linear measurements as witnessed by monuments shown hereon are true and correct to the best of my knowledge and belief. This survey was made by method of random traverse with sideshots. The unadjusted closure ratio of the traverse exceeds 1:18,900. This survey and plat meets or exceeds the minimum standards of governing authorities for an Urban survey, and complies with 201 KAR 18:150.

*R.L. Rosenbaum, Jr.*  
 R.L. Rosenbaum, P.L.S. #2600

*4-18-14*  
 Date



**BOUNDARY SURVEY**  
 0.5871 ACRES  
**TRAUD PROPERTIES, LLC**

925 ULRICH AVE.  
 99.83 OF LOT #4  
 D.B. 8797, PG. 711  
 PAUL F. ULRICH'S SUBD.  
 P.B. 5, PG. 36  
 JEFFERSON COUNTY, KY



**C. R. P. & ASSOCIATES, INC.**  
 7321 New LaGrange Road, Suite 111  
 Louisville, KY 40222  
 (502)423-8747  
 cpodgursky@chho.com