

# 9400 Bunsen Parkway

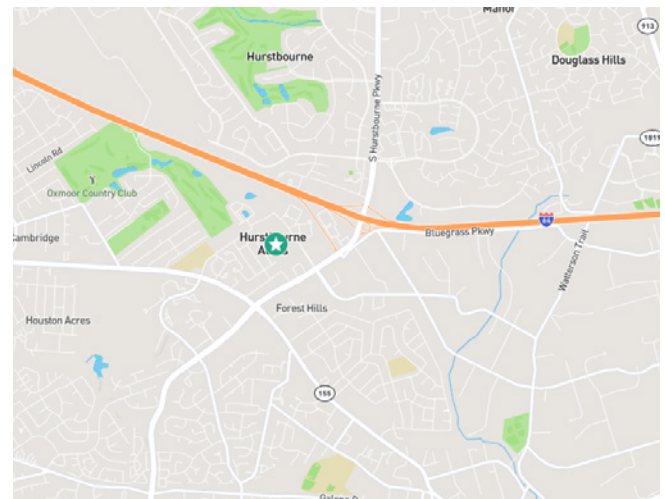
Louisville, KY 40220

Up to 19,984± SF Available

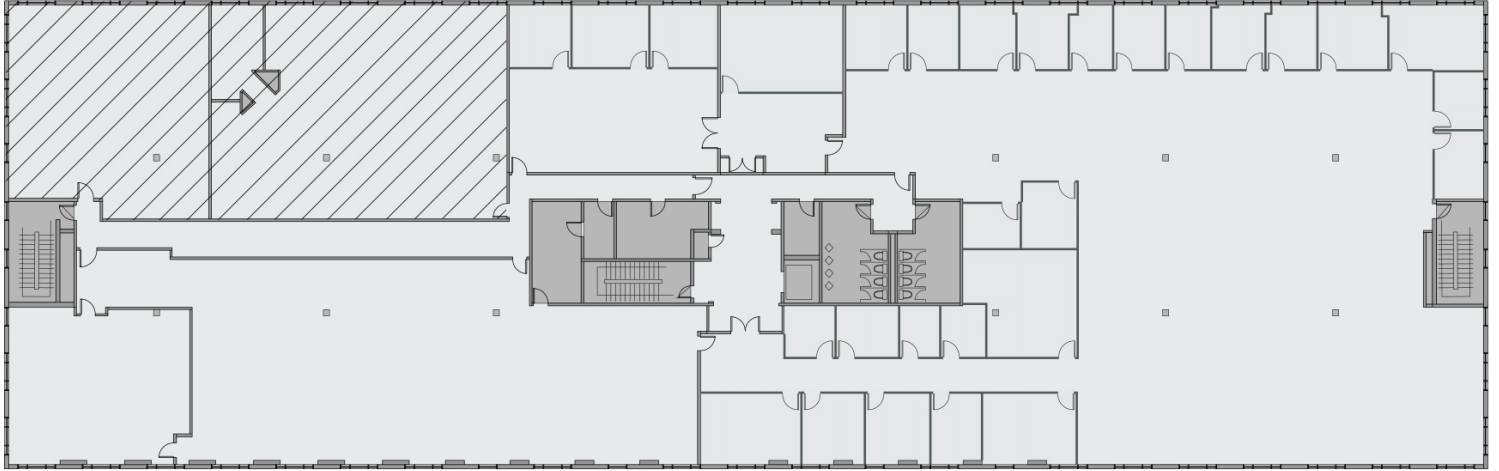


## Property Features

- + 2,500 - 19,984± sf Available
- + Efficient layout
- + Ample parking – approximately 5:1,000 sf
- + Easy access to I-64, Hurstbourne Lane, I-264 and I-265
- + Close to restaurants, retail and hotels



## Floor Plan - 19,984± SF



## Contact Us

**Rick Ashton, CCIM**  
Senior Vice President  
+1 502 412 7612  
rick.ashton@cbre.com

**Jeff Dreher, SIOR**  
Senior Vice President  
+1 502 412 7610  
jeff.dreher@cbre.com

© 2025 CBRE, Inc. All rights reserved. This information has been obtained from sources believed reliable, but has not been verified for accuracy or completeness. You should conduct a careful, independent investigation of the property and verify all information. Any reliance on this information is solely at your own risk. CBRE and the CBRE logo are service marks of CBRE, Inc. All other marks displayed on this document are the property of their respective owners, and the use of such logos does not imply any affiliation with or endorsement of CBRE. Photos herein are the property of their respective owners. Use of these images without the express written consent of the owner is prohibited.