



THE GIBSON COMPANY

COMMERCIAL REAL ESTATE SERVICES

FOR LEASE

**FOR LEASE
1147 COMMERCIAL DRIVE
LEXINGTON KY 40505**

PROPERTY FEATURES

- **±4,000 SF**
- **\$12.50 PSF/ANNUAL NNN**
- **ZONED B-4**



OVERVIEW



BUILDING HIGHLIGHTS

- **ZONED B-4 (WHOLESALE AND WAREHOUSE BUSINESS)**
- **IDEAL FOR DOWNTOWN LEXINGTON, AND SURROUNDING COMMERCIAL AND INDUSTRIAL AREAS**
- **ONE DRIVE IN DOOR**
- **CONVENIENT ACCESS TO I-75, DOWNTOWN LEXINGTON, AND SURROUNDING COMMERCIAL AND INDUSTRIAL AREAS**

CONTACT DETAILS

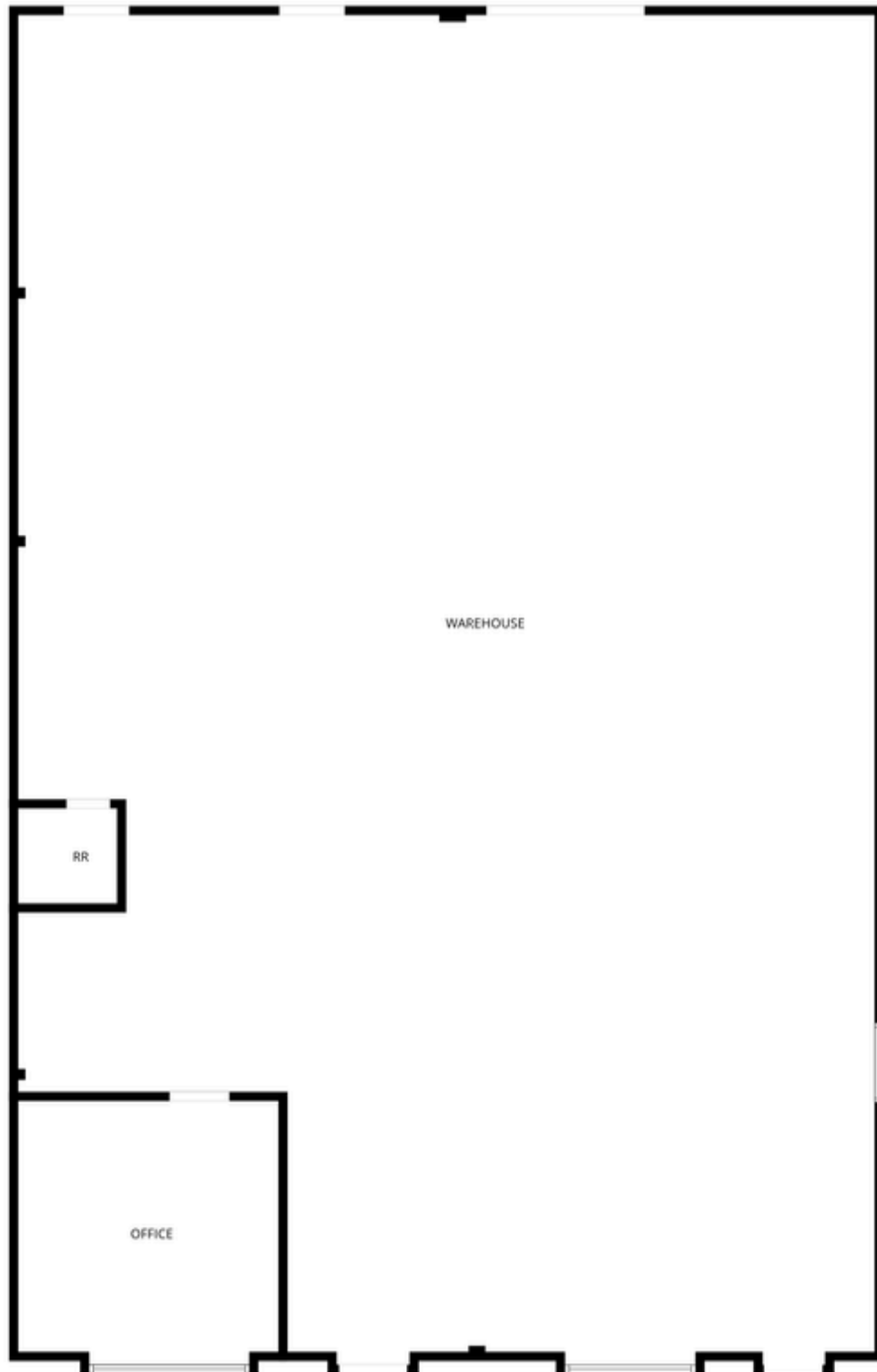
Kevin Verhoven (859) 494-4460
Jackson Arnold (502) 316-2415

Kverhoven@thegibsoncompany.com
Jarnold@thegibsoncompany.com



THE GIBSON COMPANY

COMMERCIAL REAL ESTATE SERVICES



CONTACT DETAILS

Kevin Verhoven
Jackson Arnold



(859)494-4460
(502)316-2415



Kverhoven@thegibsoncompany.com
Jarnold@thegibsoncompany.com