

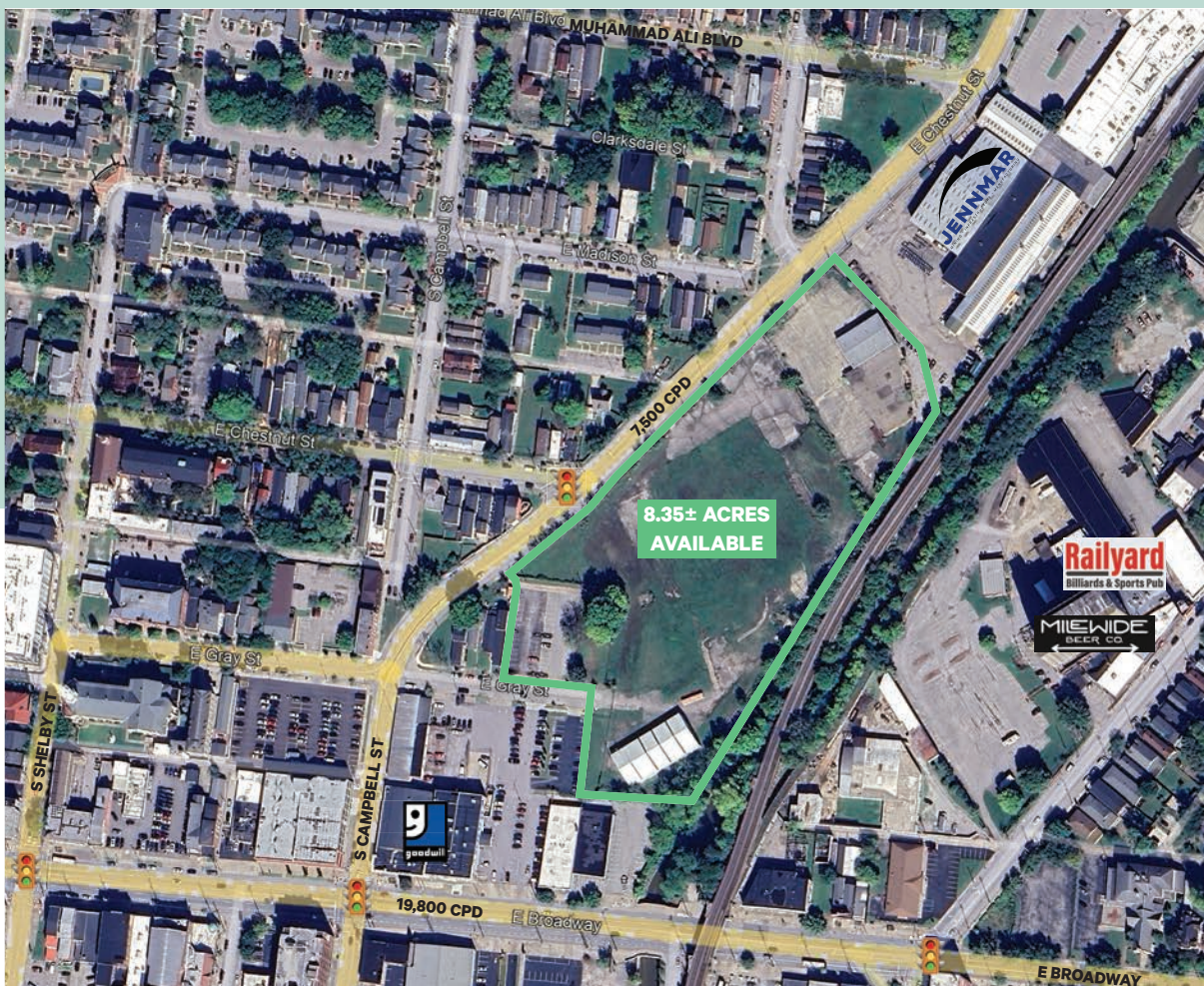
For Sale

CBRE

Development Opportunity

Now Available

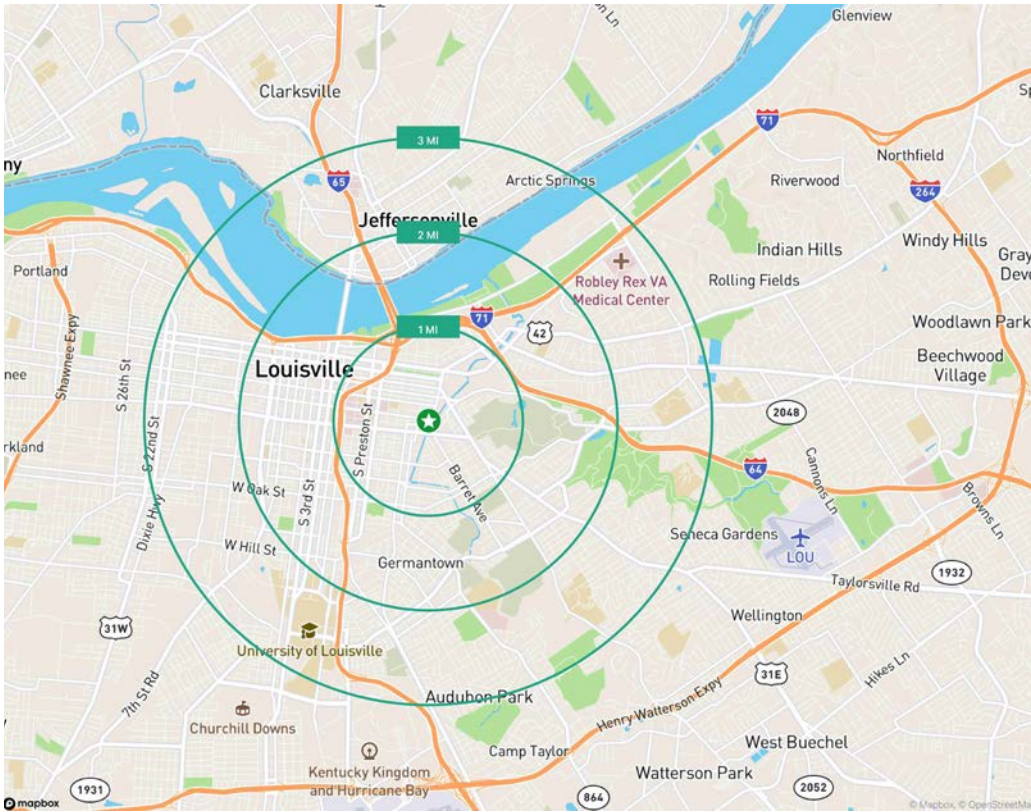
918-962 E. Chestnut Street & 917-935 E. Gray Street | Louisville, KY 40204



Retail

Property Overview

- + 8.35± acres available
- + Great visibility
- + Located near Paristown Point and Nulu with numerous nearby bars, restaurants, breweries and hotels
- + Close proximity to the hospital district and the CBD
- + Densely populated area
- + High daytime employment population
- + Zoned EZ1 & OR2



2025 Estimated Demographics

	1 Mile	2 Miles	3 Miles	4 Miles
Population	15,825	52,725	107,405	173,474
Daytime Population	64,847	146,286	206,887	275,524
Average Household Income	\$68,408	\$76,702	\$79,634	\$81,706

Contact Us

Clay Hunt

First Vice President

+1 502 412 7607

clay.hunt@cbre.com

© 2026 CBRE, Inc. All rights reserved. This information has been obtained from sources believed reliable but has not been verified for accuracy or completeness. CBRE, Inc. makes no guarantee, representation or warranty and accepts no responsibility or liability as to the accuracy, completeness, or reliability of the information contained herein. You should conduct a careful, independent investigation of the property and verify all information. Any reliance on this information is solely at your own risk. CBRE and the CBRE logo are service marks of CBRE, Inc. All other marks displayed on this document are the property of their respective owners, and the use of such marks does not imply any affiliation with or endorsement of CBRE. Photos herein are the property of their respective owners. Use of these images without the express written consent of the owner is prohibited.