

Jasper
Elementary
School

Jasper
Middle
School

SITE

Walmart

- SHOE SHOW
- FANTASTIC SAM'S
- SMTV, VAPE & SMOKE SHOP
- MARACUBA EXPRESS
- GameStop**
- NEW SUPER BUFFET
- ROSS**
DRESS FOR LESS
- enterp
gentiva
HOSPICE

Newton Street

16,469 VPD (22)

W 36th Street

5,766 VPD (23)

FOR LEASE

NORTHRIDGE SHOPPING CENTER
2830 N. NEWTON STREET, JASPER, IN

HOGAN
REAL ESTATE

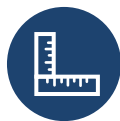
PROPERTY DESCRIPTION

NORTHRIDGE SHOPPING CENTER
2830 N. NEWTON ST., JASPER, IN



Features

- + 4,800 & 24,049 ± SF inline retail space & 1,560 ± SF outparcel space is available for lease in the heart of Jasper's retail trade area.
- + The center features multiple points of access, including the signalized intersection at N. Newton Street and Baden Strasse.
- + Center tenants include Walmart, Shoe Show, Fantastic Sams, SMTV Vape & Smoke Shop, GameStop, Maracuba Express, New Super Buffet, Ross, Enterprise, and Gentiva Hospice.
- + Major retailers in the immediate area include The Home Depot, Harbor Freight Tools, T.J. Maxx, Kohl's, Ulta Beauty, and Dollar Tree.
- + Jasper, IN, the hub of Dubois County has a thriving day-time population and one of the lowest rates of unemployment in Indiana.
- + Jasper is known as the "Wood Office Furniture Capital of the World" and is home to multiple manufacturing companies, including Kimball International, the 6th largest office furniture company in the U.S.



1,560, 4,800 & 24,049 ± SF

RETAIL SPACE AVAILABLE

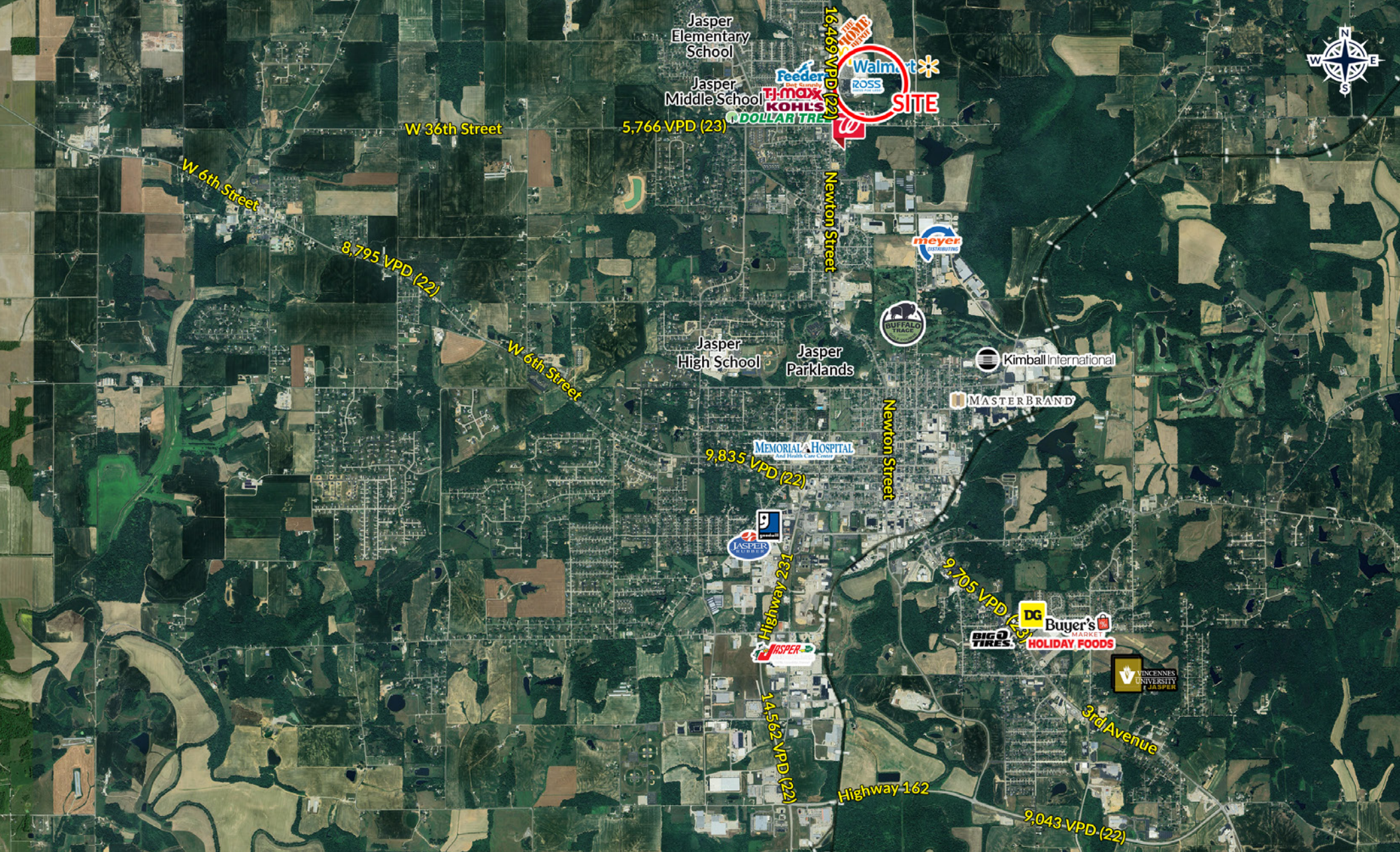
For Lease

Demographics

	1 Mile	3 Miles	5 Miles
Population	3,725	13,413	21,384
Average Household Income	\$70,052	\$82,147	\$88,755

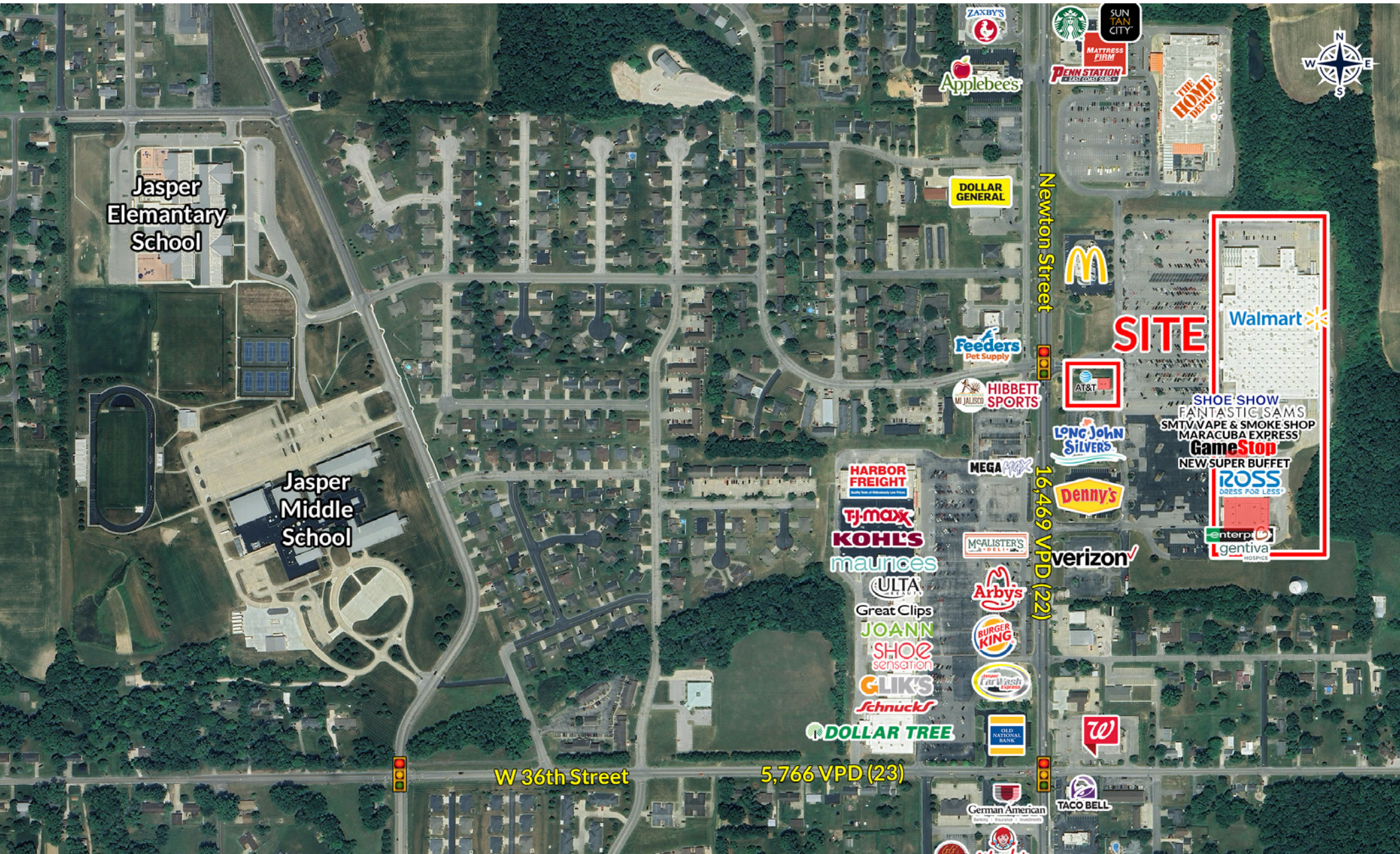
AERIAL

NORTHRIDGE SHOPPING CENTER 2830 N. NEWTON ST., JASPER, IN



TRADE AREA AERIAL

NORTHRIDGE SHOPPING CENTER
2830 N. NEWTON ST., JASPER, IN



SITE PLAN

NORTHRIDGE SHOPPING CENTER
2830 N. NEWTON ST., JASPER, IN



Newton Street

16,469 VPD (22)



1,560 SF AVAILABLE

SHOE SHOW
FANTASTIC SAM'S
CUT & COLOR
SMTV VAPE & SMOKE SHOP

4,800 SF AVAILABLE



MARACUBA EXPRESS
NEW SUPER BUFFET



24,049 SF AVAILABLE



HOGAN REAL ESTATE

PROPERTY CONTACT

JIM CONKLIN

D: 502.271.5817
C: 812.972.3259
M: 502.426.1050
F: 502.426.1223
jconklin@hogandev.com

LAWRENCE BISIG

D: 502.271.5830
C: 502.593.8816
M: 502.426.1050
F: 502.426.1223
lbisig@hogandev.com