

For Lease

CBRE

# Retail Space Available

New Construction

Charlestown Plaza | 80 Market Street | Charlestown, Indiana



Retail

## Property Overview

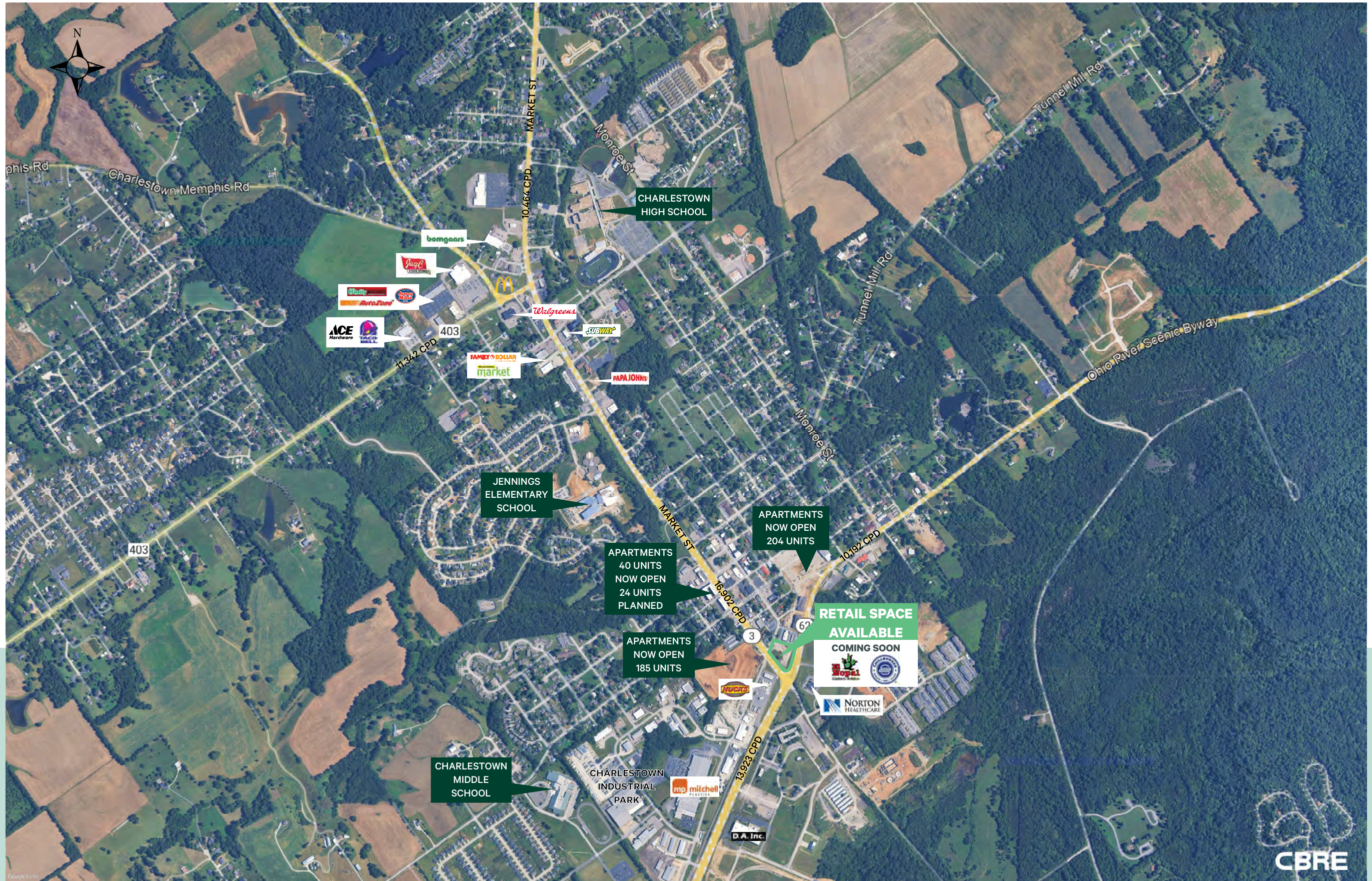
Charlestown is part of the Louisville, KY MSA and is located approximately 15 minutes from I-65 and 20 minutes from Louisville. This is a high growth area with a 2.48% growth rate from 2020-2025 with multiple new housing developments planned or underway. Clark County's total population is projected to grow by 19.3% between 2020 and 2050.

# 2,000

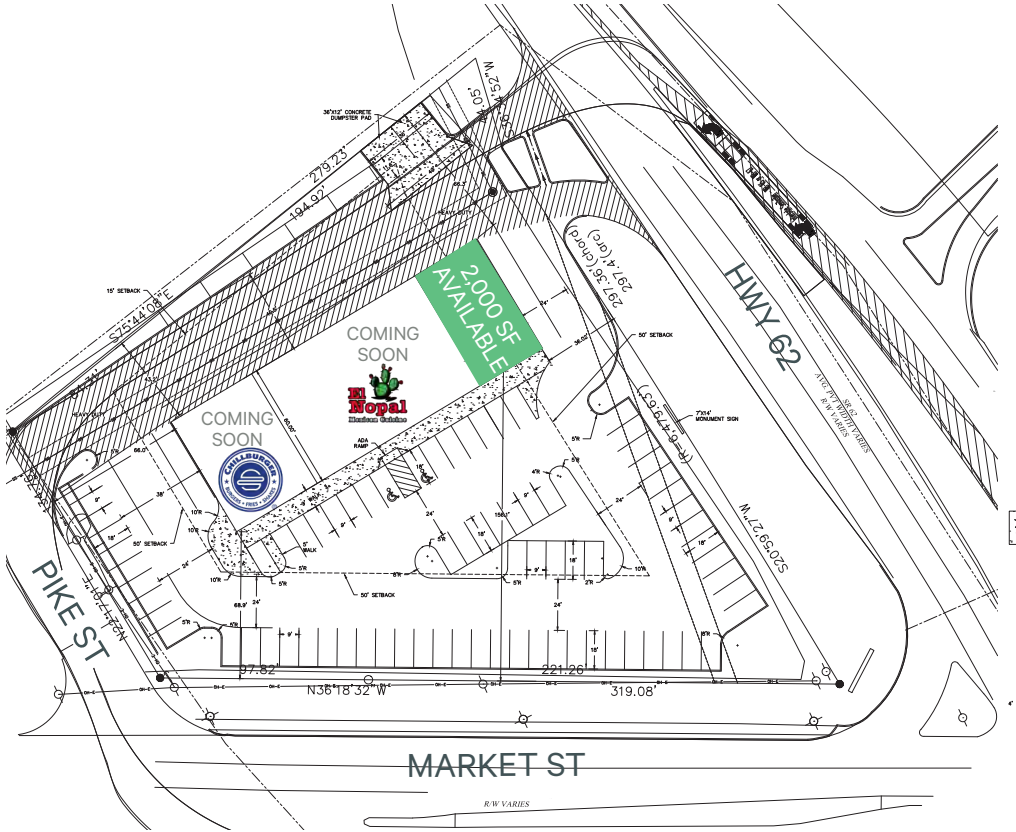
Square Foot Endcap Available

## Property Features

- Located at the signalized intersection of Hwy 62 & Market Street (State Road 3)
- New tenants El Nopal and Chillburger coming soon
- Excellent visibility
- Traffic counts:  
10,192 CPD on Hwy 62  
16,902 CPD on Market Street







2024 Estimated Demographics

	3 Miles	5 Miles	10 Miles
Population	10,979	22,264	132,577
Daytime Population	8,254	18,752	119,182
Average Household Income	\$98,509	\$125,121	\$135,506

Contact Us

**Bryan Schwartz**  
Senior Associate  
+1 502 412 7635  
bryan.schwartz@cbre.com

**Clay Hunt**  
First Vice President  
+1 502 412 7607  
clay.hunt@cbre.com

© 2026 CBRE, Inc. All rights reserved. This information has been obtained from sources believed reliable but has not been verified for accuracy or completeness. CBRE, Inc. makes no guarantee, representation or warranty and accepts no responsibility or liability as to the accuracy, completeness, or reliability of the information contained herein. You should conduct a careful, independent investigation of the property and verify all information. Any reliance on this information is solely at your own risk. CBRE and the CBRE logo are service marks of CBRE, Inc. All other marks displayed on this document are the property of their respective owners, and the use of such marks does not imply any affiliation with or endorsement of CBRE. Photos herein are the property of their respective owners. Use of these images without the express written consent of the owner is prohibited.