

For Lease

CBRE

Retail Space Available

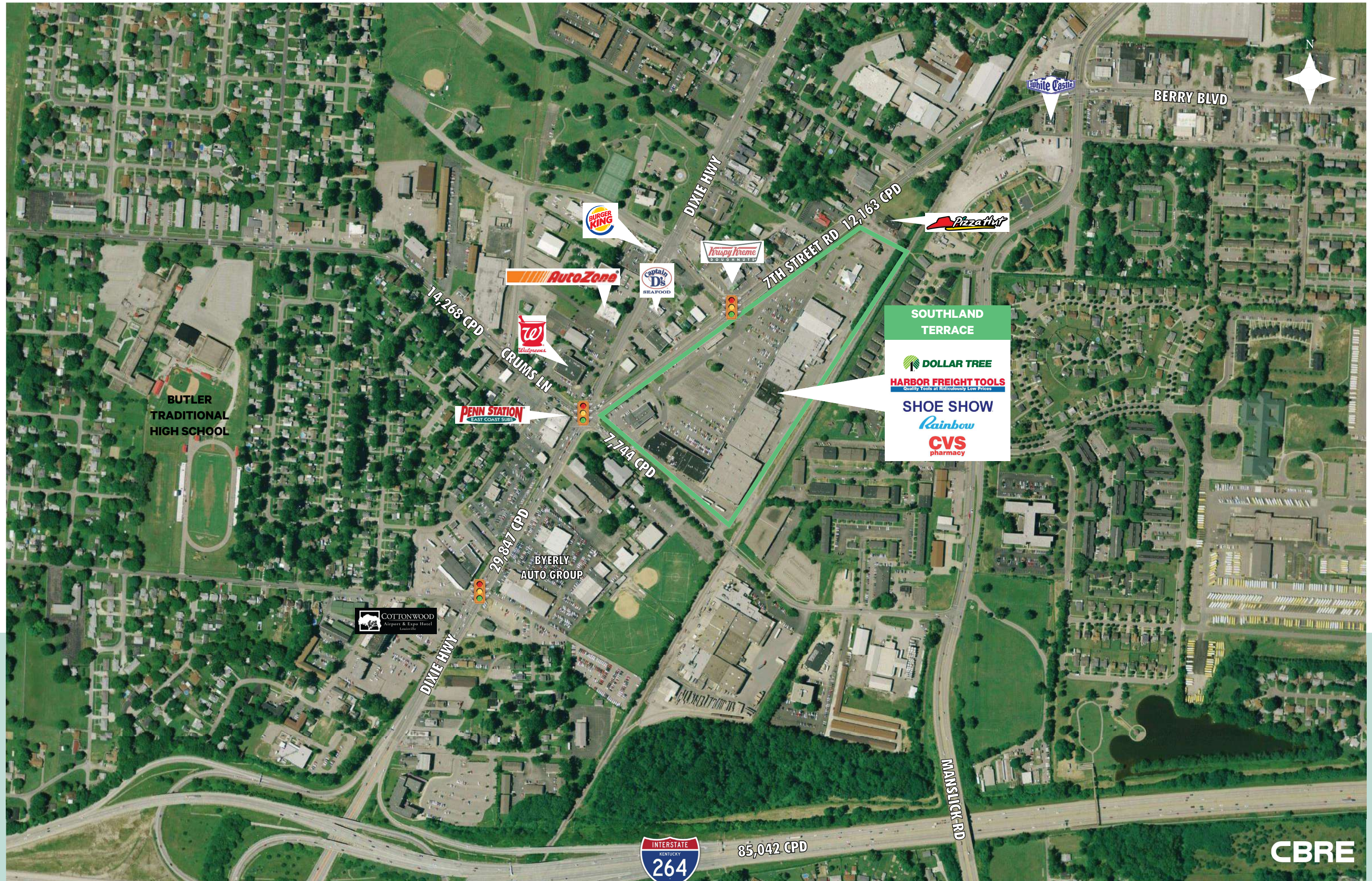
Anchor Opportunity

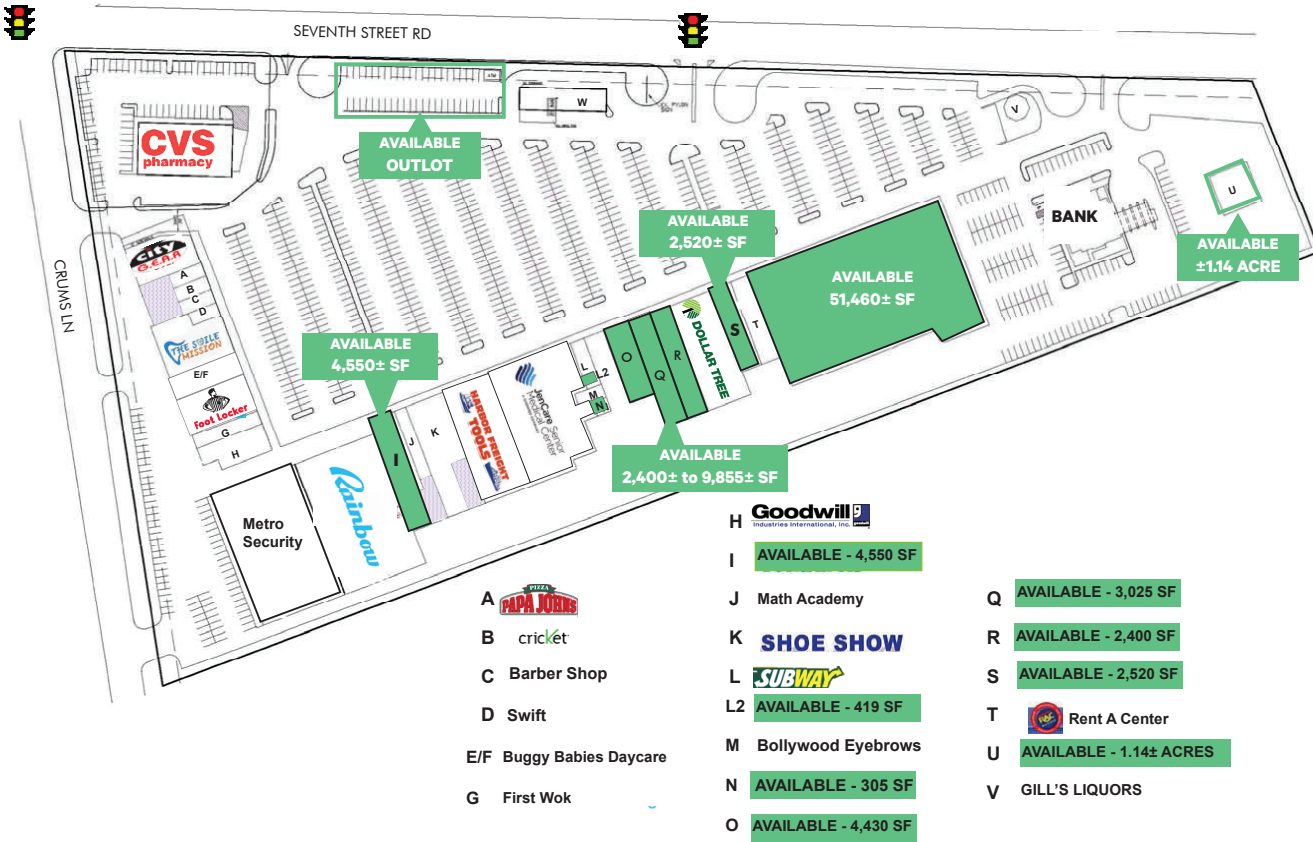
Southland Terrace | 3923 S. Seventh Street Road | Louisville, KY 40216



Property Overview

- Up to 51,460± square feet available
- Small shop space and outlots available
- Tenants include Harbor Freight Tools, CVS Pharmacy, Dollar Tree, Rainbow, & Shoe Show
- Primary retail shopping center for the Shively area
- Signalized entrance from S. Seventh Street Road
- Great visibility
- Ample parking
- Traffic count:
12,163 CPD on S. Seventh Street Road





2025 Estimated Demographics	1 Mile	2 Miles	3 Miles	4 Miles
Population	13,574	50,575	102,825	161,510
Daytime Population	5,363	20,273	40,918	66,612
Average Household Income	\$52,033	\$60,159	\$59,770	\$62,093

Contact Us

Bryan Schwartz
Senior Associate
+1 502 412 7635
bryan.schwartz@cbre.com

Clay Hunt
First Vice President
+1 502 412 7607
clay.hunt@cbre.com

© 2026 CBRE, Inc. All rights reserved. This information has been obtained from sources believed reliable but has not been verified for accuracy or completeness. CBRE, Inc. makes no guarantee, representation or warranty and accepts no responsibility or liability as to the accuracy, completeness, or reliability of the information contained herein. You should conduct a careful, independent investigation of the property and verify all information. Any reliance on this information is solely at your own risk. CBRE and the CBRE logo are service marks of CBRE, Inc. All other marks displayed on this document are the property of their respective owners, and the use of such marks does not imply any affiliation with or endorsement of CBRE. Photos herein are the property of their respective owners. Use of these images without the express written consent of the owner is prohibited.