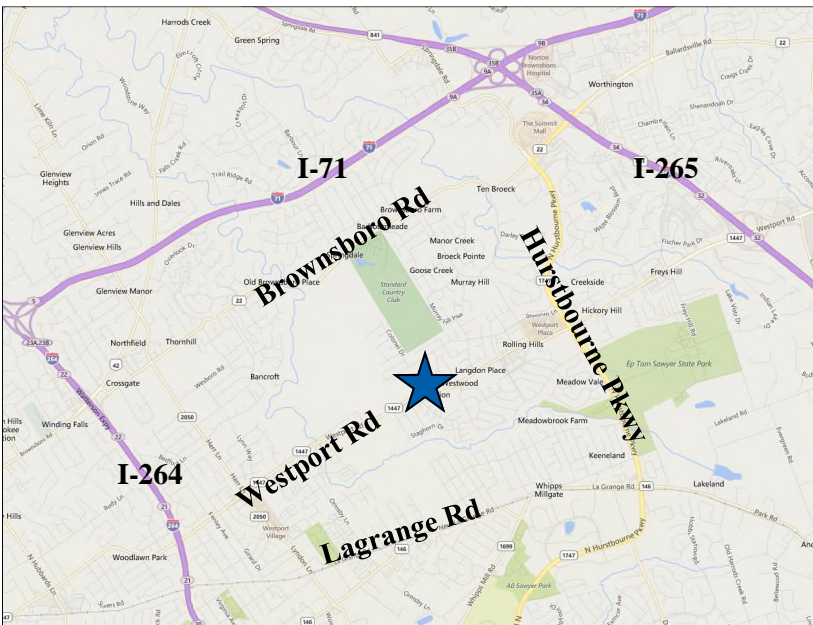


RETAIL/OFFICE SPACE FOR LEASE

8704 Bayberry Place, Ste 101, Louisville, KY 40242



- 1,140± SF retail/office space
- Open space with wet bar, restroom, shower and storage
- Ample parking
- Other tenants include dentist, veterinarian, dance studio and grocery
- Located just off Westport Rd in Plantation next to Louisville Indoor Racquet Club
- Zoned C-1

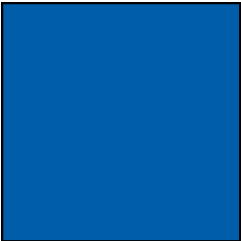
Rhonda Karageorge, CCIM
(502) 744-9175
(502) 379-6003
rk@ccre.biz



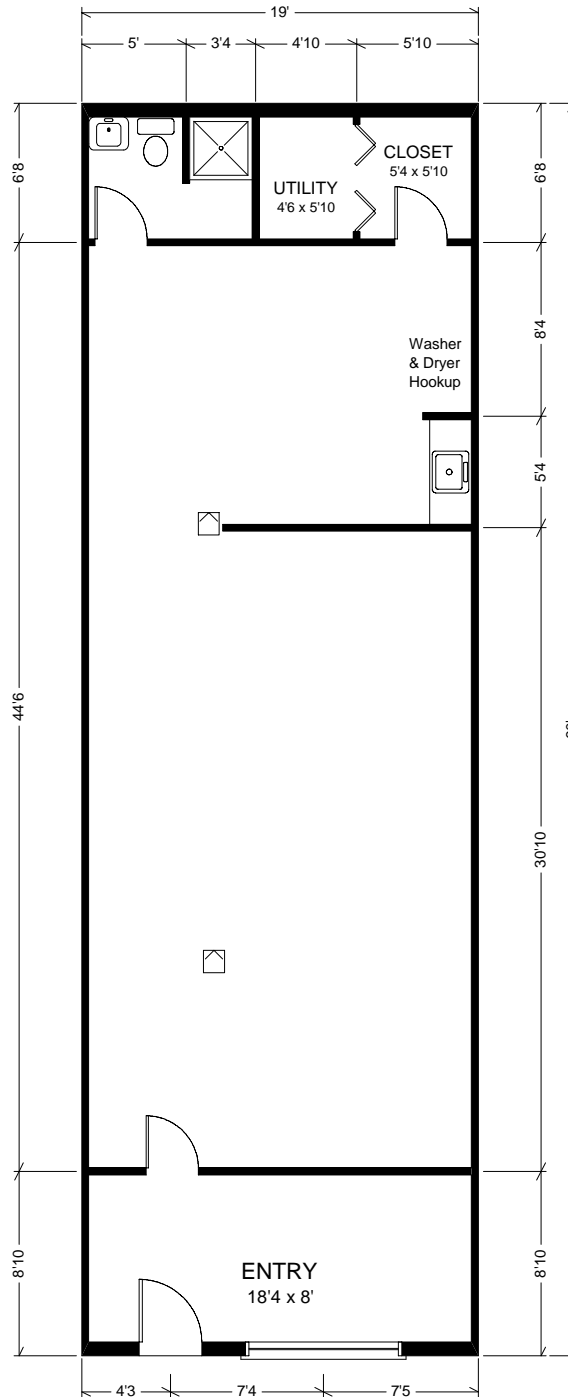
Commonwealth Commercial Real Estate, 10444 Bluegrass Parkway, Louisville, Kentucky 40299
Phone: (502) 379-6000 | www.ccre.biz | Licensed in Kentucky and Indiana

We obtained this information from sources we believe are reliable, however, we make no guarantee, warranty or representation about it. It is provided subject to the possibility of errors, omissions, change of price, rental or other conditions, prior sale, lease or financing, or withdrawal without notice. Images or plans presented are not architectural or "as built" drawings and are presented to give an approximation of space/dimensions and, therefore, no warranty or representation, express or implied, is made to their accuracy. It is your responsibility to independently verify that the property is acceptable to you and for your intended use.

RETAIL/OFFICE SPACE FOR LEASE



8704 Bayberry Place, Ste 101, Louisville, KY 40242



Commonwealth Commercial Real Estate, 10444 Bluegrass Parkway, Louisville, Kentucky 40299
Phone: (502) 379-6000 | www.ccre.biz | Licensed in Kentucky and Indiana

We obtained this information from sources we believe are reliable, however, we make no guarantee, warranty or representation about it. It is provided subject to the possibility of errors, omissions, change of price, rental or other conditions, prior sale, lease or financing, or withdrawal without notice. Images or plans presented are not architectural or "as built" drawings and are presented to give an approximation of space/dimensions and, therefore, no warranty or representation, express or implied, is made to their accuracy. It is your responsibility to independently verify that the property is acceptable to you and for your intended use.