

# Retail Space Available

New Construction

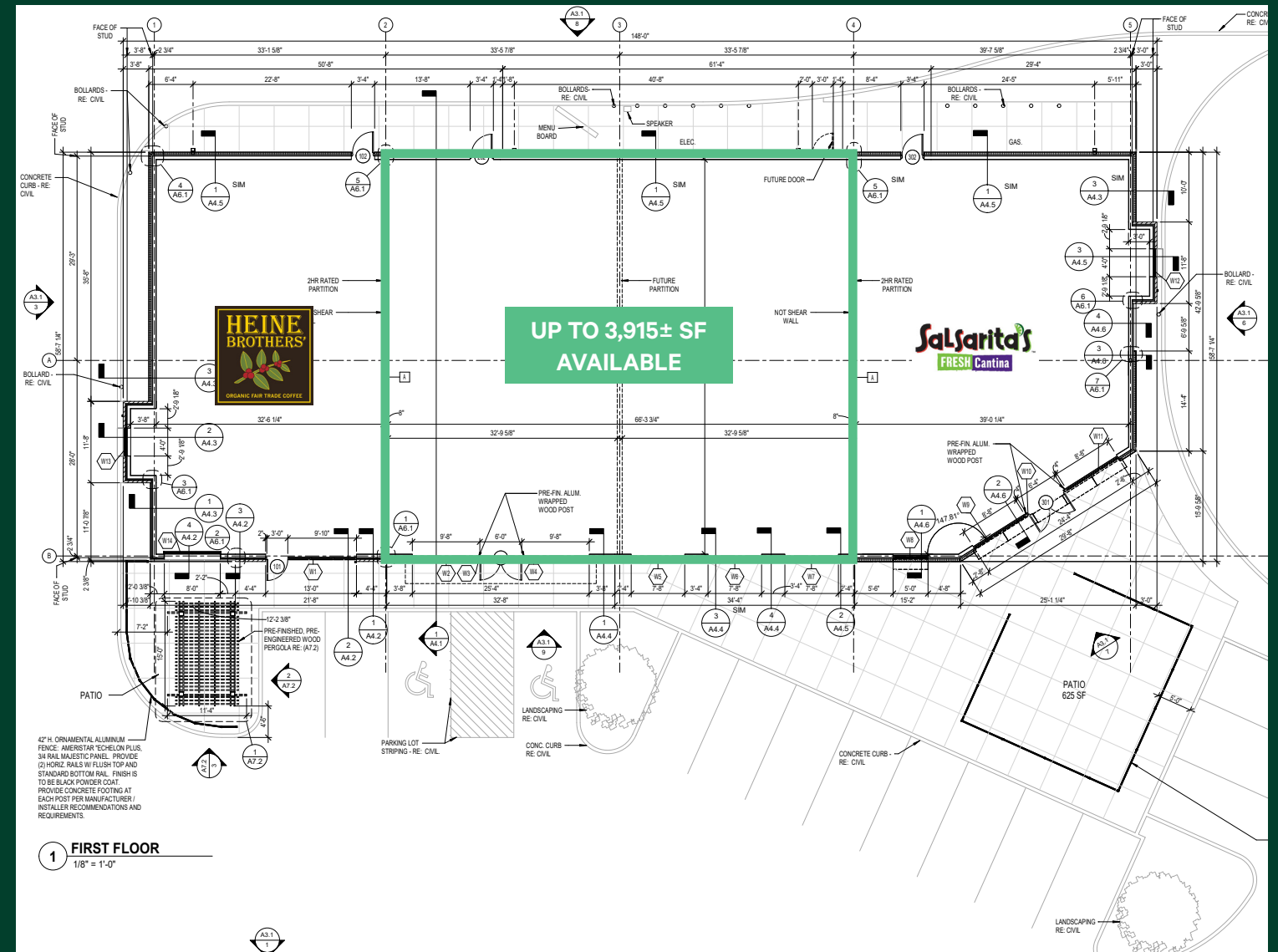
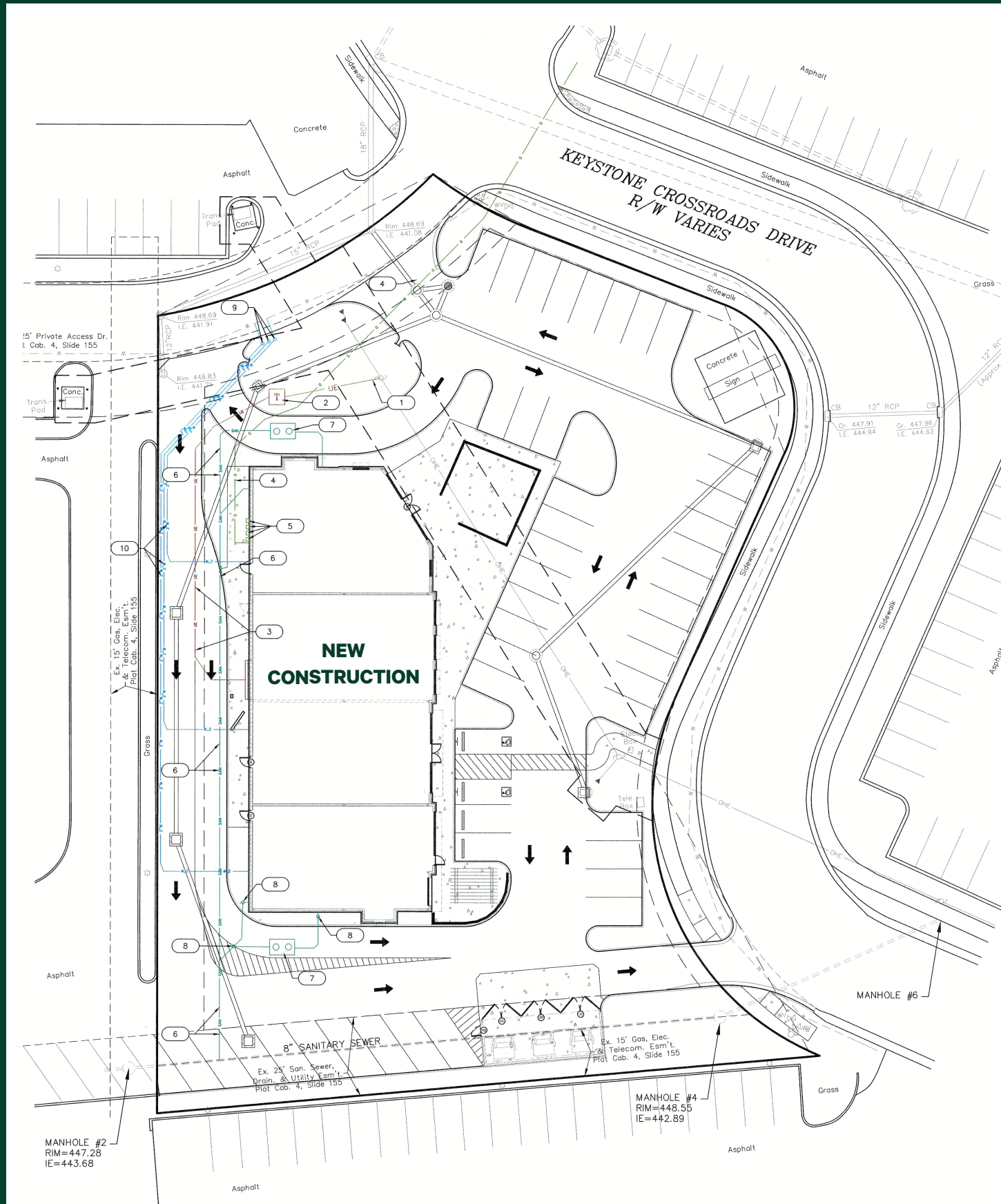
285 Keystone Crossroads Drive  
Shepherdsville, KY 40165



## Property Features

- + Up to 3,915± square feet available
- + Join co-tenants Heine Brothers Coffee and Salsaritas Fresh Cantina
- + Adjacent to Panera Bread, Burger King, Cattleman's Roadhouse, Panda Express, Starbucks Coffee, White Castle, Wendy's
- + Located at the Hwy 44 & Interstate 65 interchange in Shepherdsville near Kroger, Lowe's and Walmart
- + High growth area





# Retail Space Available

285 Keystone Crossroads Drive | Shepherdsville, KY 40165

# For Lease

	1 MILE	3 MILES	5 MILES	10 MILES
<b>DAYTIME POPULATION</b>				
<b>2023 Daytime Population</b>	<b>7,330</b>	<b>20,863</b>	<b>31,282</b>	<b>104,482</b>
Daytime Workers	5,098 69.5%	10,668 51.1%	14,999 47.9%	36,800 35.2%
Daytime Residents	2,232 30.5%	10,195 48.9%	16,283 52.1%	67,682 64.8%
<b>POPULATION</b>				
2023 Population - Current Year Estimate	4,403	19,001	30,606	133,879
2028 Population - Five Year Projection	4,561	19,610	31,376	136,291
2020 Population - Census	4,255	18,256	29,662	131,482
2010 Population - Census	3,416	16,072	26,932	119,965
2020-2023 Annual Population Growth Rate	1.06%	1.24%	0.97%	0.56%
2023-2028 Annual Population Growth Rate	0.71%	0.63%	0.50%	0.36%
<b>HOUSEHOLDS</b>				
2023 Households - Current Year Estimate	1,813	7,363	11,976	51,490
2028 Households - Five Year Projection	1,887	7,657	12,360	52,766
2010 Households - Census	1,402	5,941	10,147	45,161
2020 Households - Census	1,748 94.3%	7,059 96.2%	11,575 96.2%	50,286 95.6%
2020-2023 Compound Annual Household Growth Rate	1.13%	1.31%	1.05%	0.73%
2023-2028 Annual Household Growth Rate	0.80%	0.79%	0.63%	0.49%
2023 Average Household Size	2.41	2.58	2.55	2.59
<b>HOUSEHOLD INCOME</b>				
<b>2023 Households</b>	<b>1,813</b>	<b>7,363</b>	<b>11,975</b>	<b>51,489</b>
Under \$15,000	213 11.8%	874 11.9%	1,182 9.9%	3,869 7.5%
\$15,000-\$24,999	195 10.8%	751 10.2%	1,068 8.9%	3,788 7.4%
\$25,000-\$34,999	93 5.1%	416 5.7%	685 5.7%	3,824 7.4%
\$35,000-\$49,999	254 14.0%	1,151 15.6%	1,765 14.7%	6,982 13.6%
\$50,000-\$74,999	324 17.9%	1,511 20.5%	2,459 20.5%	10,506 20.4%
\$75,000-\$99,999	282 15.6%	1,123 15.3%	1,802 15.1%	8,083 15.7%
\$100,000-\$149,999	334 18.4%	1,096 14.9%	1,962 16.4%	9,403 18.3%
\$150,000-\$199,999	70 3.9%	255 3.5%	588 4.9%	3,085 6.0%
\$200,000 and Over	47 2.6%	187 2.5%	464 3.9%	1,950 3.8%
2023 Average Household Income	\$75,318	\$72,460	\$80,696	\$84,575
2028 Average Household Income	\$83,493	\$80,322	\$90,234	\$96,585
2023 Median Household Income	\$59,310	\$55,962	\$60,550	\$65,092
2028 Median Household Income	\$65,051	\$59,969	\$66,238	\$75,054
2023 Per Capita Income	\$30,443	\$27,957	\$31,154	\$32,579
2028 Per Capita Income	\$33,859	\$31,199	\$35,045	\$37,450

## Contact Us

### Clay Hunt

First Vice President  
+1 502 412 7607  
clay.hunt@cbre.com

### Robert Schwartz

Senior Vice President  
+1 502 412 7606  
robert.schwartz@cbre.com

### Bryan Schwartz

Associate  
+1 502 412 7635  
bryan.schwartz@cbre.com

© 2024 CBRE, Inc. All rights reserved. This information has been obtained from sources believed reliable but has not been verified for accuracy or completeness. CBRE, Inc. makes no guarantee, representation or warranty and accepts no responsibility or liability as to the accuracy, completeness, or reliability of the information contained herein. You should conduct a careful, independent investigation of the property and verify all information. Any reliance on this information is solely at your own risk.