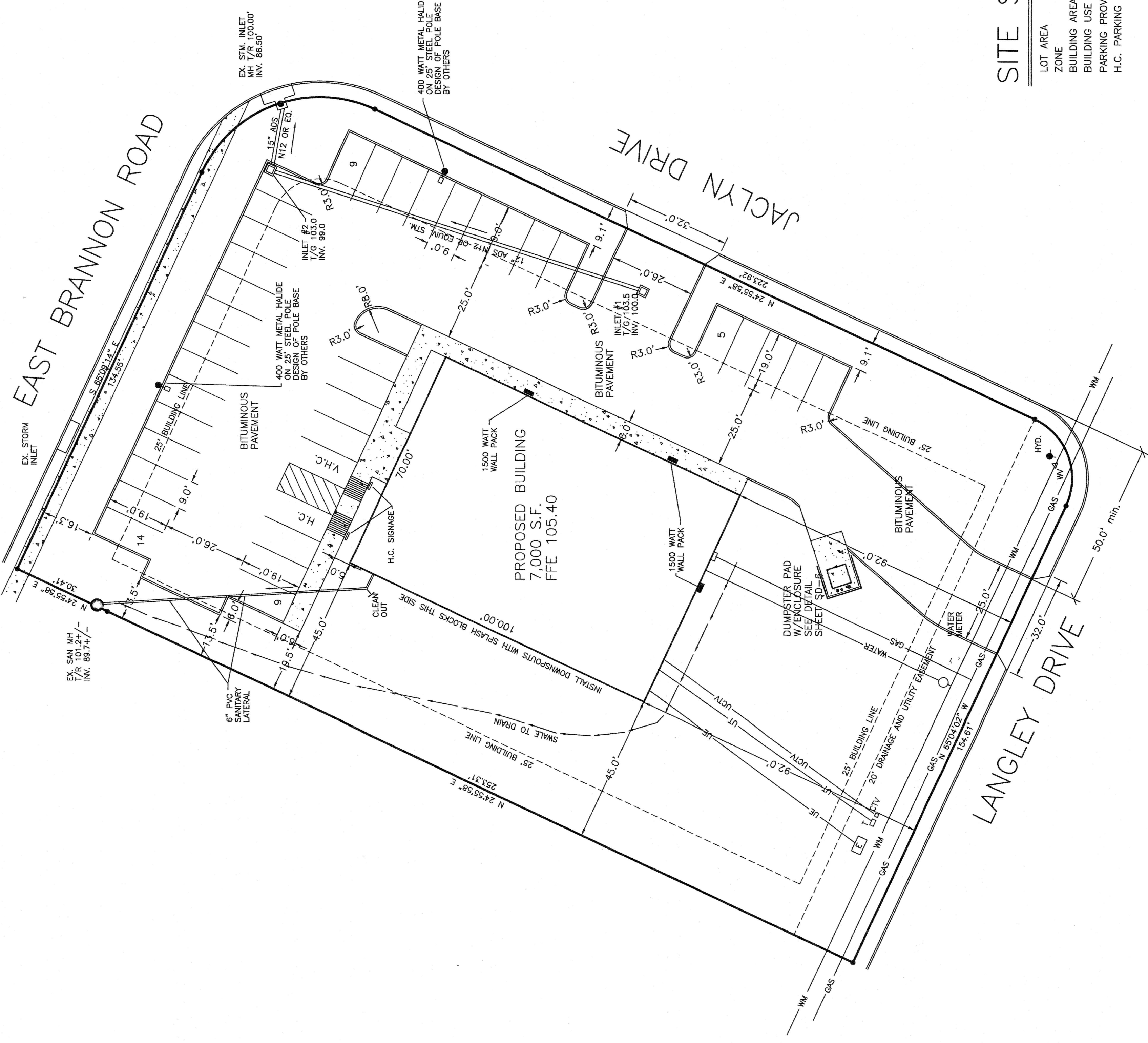


NOTES

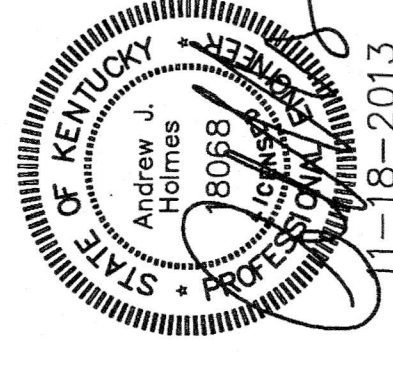
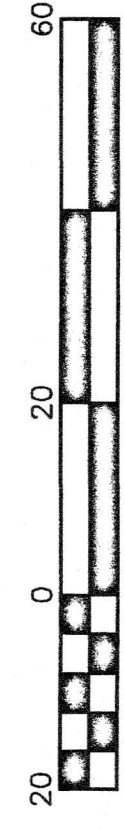
- REFER TO SHEET SD-5 FOR EROSION AND SEDIMENT CONTROL REQUIREMENTS.
- NO GRADING SHALL TAKE PLACE ON THIS LOT UNTIL A GRADING PERMIT HAS BEEN ISSUED BY THE APPROPRIATE AGENCY.
- LAYOUT WORK IS THE RESPONSIBILITY OF THE CONTRACTOR.
- IF ADDITIONAL FILL MATERIAL IS REQUIRED TO ACHIEVE THE GRADES SHOWN, IT SHALL BE SUPPLIED BY THE CONTRACTOR. ANY MATERIAL TO BE BROUGHT ONTO THE SITE IS SUBJECT TO APPROVAL BY THE OWNER.
- REFER TO SHEET SD-2 FOR ADDITIONAL NOTES, REQUIREMENTS, AND CONTRACTOR RESPONSIBILITIES.
- THE CONTRACTOR SHALL ENSURE THAT THIS SITE IS COMPLIANT WITH ALL BUILDING CODES.
- THE CONTRACTOR SHALL ENSURE THAT THE AREA OF THE HANDICAP ACCESSIBLE PARKING AND ASSOCIATED ACCESS AISLE IS GRADED AT A MAXIMUM OF 2.0% IN COMPLIANCE WITH ADA.
- EXISTING UNDERGROUND UTILITIES ARE SHOWN IN THEIR SUSPECTED LOCATIONS. THE CONTRACTOR SHALL VERIFY THE LOCATIONS OF ALL UTILITIES PRIOR TO EXCAVATION. UNDERGROUND UTILITIES SHALL BE RELOCATED AS NECESSARY. THE CONTRACTOR SHALL CONTACT ALL UTILITY COMPANIES PRIOR TO INITIATING GRADING TO DETERMINE UTILITY COMPANY REQUIREMENTS. ALL UTILITY REQUIREMENTS ARE THE RESPONSIBILITY OF THE CONTRACTOR.
ALL UTILITY SERVICES SHALL BE INSTALLED IN ACCORDANCE WITH THE UTILITY COMPANY REQUIREMENTS. ALL UTILITY SERVICE LOCATIONS SHOWN ON THIS PLAN ARE SCHEMATIC AND REPRESENT THE BEST INFORMATION AVAILABLE TO THE ENGINEER. THE CONTRACTOR IS RESPONSIBLE FOR CONTACTING EACH UTILITY PROVIDER, INCLUDING SANITARY SEWER, GAS, WATER, ELECTRIC, TELEPHONE, STORM, AND ANY OTHER PROVIDER HAVING FACILITIES ON THE SITE, TO LOCATE EACH EXISTING FACILITY, AND COORDINATE THE PRECISE LOCATION, SIZE, MATERIAL, AND INSTALLATION REQUIREMENTS FOR THE SERVICES.
THE CONTRACTOR IS RESPONSIBLE FOR MAINTAINING SERVICE TO OTHER PROPERTIES SERVED BY THE UTILITY COMPANIES AND AFFECTED BY HIS ACTIVITIES RELATED TO CONSTRUCTION OF THE IMPROVEMENTS SHOWN ON THIS PLAN, AND CONNECTION OF UTILITIES TO THE FACILITY SHOWN HEREON. ANY INTERRUPTION OF SERVICE IS THE RESPONSIBILITY OF THE CONTRACTOR.
- SHOULD THERE BE A CONFLICT BETWEEN ANY UTILITY COMPANY'S REQUIREMENTS OR EXISTING FACILITIES, AND ANY ITEM SHOWN ON THIS PLAN, THE CONTRACTOR SHALL IDENTIFY SUCH CONFLICT AND CONTACT THE OWNER AND ENGINEER PRIOR TO CONSTRUCTION. FAILURE OF THE CONTRACTOR TO MAKE SUCH CONTACT WILL CONSTITUTE THE CONTRACTOR'S ACCEPTANCE OF THE CONDITIONS, AND THE CONTRACTOR'S LIABILITY FOR RESOLUTION WILL BELONG TO THE CONTRACTOR.

- PROPERTY LINES, EASEMENTS, AND TOPOGRAPHY WERE PROVIDED BY WESLEY B. THOMPSON, INC., LAND SURVEYING, 1000 W. WASHINGTON, CINCINNATI, OHIO 45202. THE EASEMENT WAS ESTABLISHED BY LOCATING THE EXISTING SANITARY, SEWER AND CENTERING THE EASEMENT OVER THE SEWER.
- ALL PROPOSED DRAINAGE INLETS SHALL HAVE A WATER QUALITY FILTER INSTALLED. THE FILTER SHALL BE AS MANUFACTURED BY ADS PIPE AND SHALL BE A FLEXSTORM INLET FILTER OR APPROVED EQUAL. FOR SUBSTITUTIONS, THE CONTRACTOR SHALL SUBMIT A DETAIL, DESIGN DATA, AND CALCULATIONS TO THE ENGINEER FOR REVIEW, PRIOR TO ORDERING THE UNIT.
- LIGHTING DESIGN IS BY OTHERS. LOCATIONS ARE SHOWN ON THIS PLAN FOR INFORMATIONAL PURPOSES. ALL LIGHTING FIXTURES SHALL BE DESIGNED, CONFIGURED, AND INSTALLED SO THAT NO LIGHT IS TRANSMITTED TO ADJACENT PROPERTY. LIGHTING SHALL MEET ALL APPLICABLE REQUIREMENTS OF ALL AGENCIES HAVING JURISDICTION.
- IT SHALL BE THE RESPONSIBILITY OF THE PROPERTY OWNER TO INSTALL, AT THEIR OWN EXPENSE, WATER TAPS, SEWER LATERALS, WATER BOXES, ETC. TO CITY JESSAMINE COUNTY WELLS. THE CONTRACTOR SHALL BE RESPONSIBLE FOR WATER TAP FEES SHALL BE PAID TO THE CITY PRIOR TO OCCUPANCY.
- A COPY OF THE NOI FORM SHALL BE SUBMITTED TO NPC STAFF PRIOR TO THE ISSUANCE OF A BUILDING PERMIT.
- PLANS FOR WALL MOUNTED, FREE STANDING, AND DIRECTIONAL SIGNS SHALL BE SUBMITTED AND REVIEWED PRIOR TO INSTALLATION.



SITE STATISTICS

LOT AREA	1.1 ACRES
ZONE	B-2
BUILDING AREA	7,000 S.F. GROSS AREA
BUILDING USE	MEDICAL OFFICE
PARKING PROVIDED	37 SPACES
H.C. PARKING PROVIDED	2 SPACES



SHEET TITLE		PROJECT TITLE	
LAYOUT PLAN		NEW MEDICAL OFFICE FACILITY, JACLYN DRIVE SUBDIVISION A LOT 21, NICHOLASVILLE, KY	
JOB NO.	DWG NO.	DRAWING:	
888	SD3.DWG	SD-3	
DATE		SCALE	
10-16-13		AS NOTED	
PER OWNER AND AGENCY REVIEW		CHECKED BY:	
11-09-13		AJH	
11-18-13		DATE	
DRIVE ALIGNMENT, CURB & GUTTER, ROOF DGE.		DRAWN BY:	
		AJH	
		DATE	
		10-16-2013	
		SCALE	
		AS NOTED	
MIDWEST ENGINEERING, INC.			
CONSULTING CIVIL ENGINEERS			
2480 FORTUNE DRIVE, SUITE 140			
LEXINGTON, KENTUCKY 40509			
PHONE: 859-396-9628			
FAX: 888-869-0074			
EMAIL: midwesteng@gmail.com			