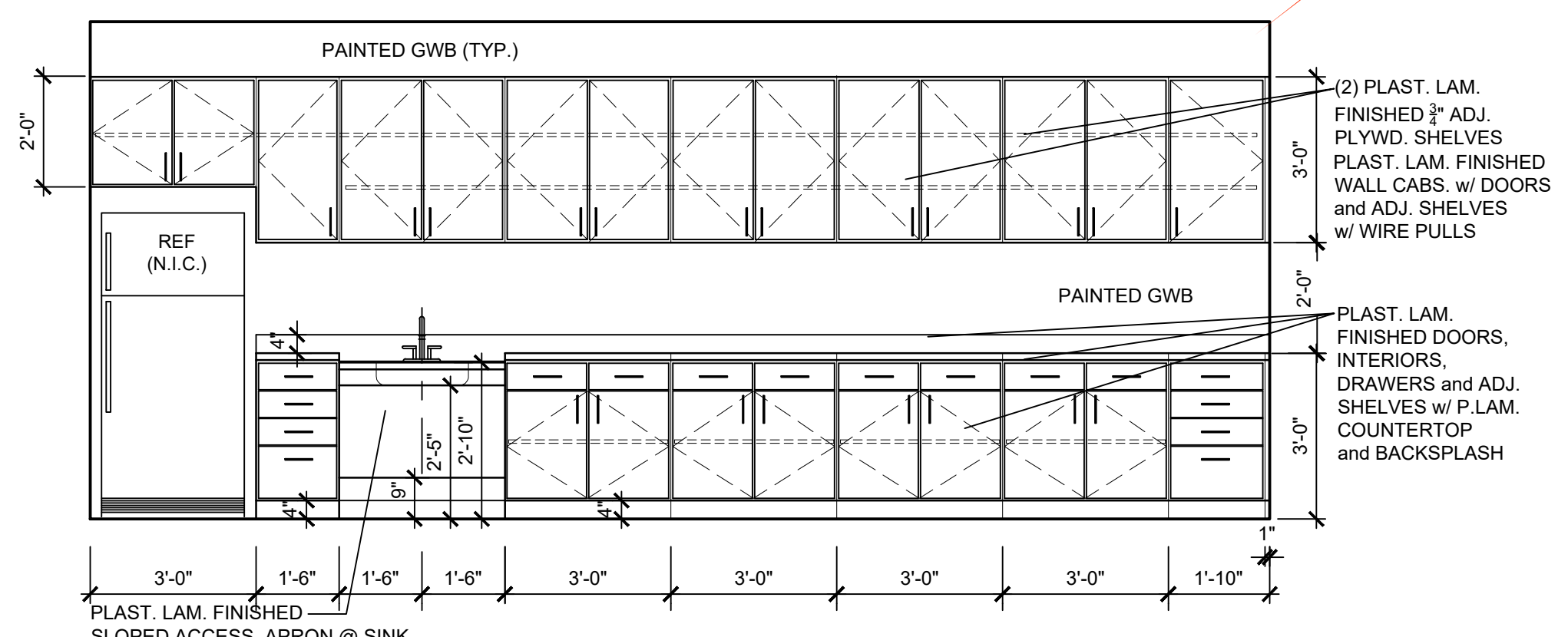


1 RENOVATION FLOOR PLAN
 SCALE: 3/16"=1'-0"

Suite 230

Private Restroom can be re-incorporated into suite.



3 BREAK RM. ELEVATION
 SCALE: 3/8"=1'-0"

RENOVATION PLAN LEGEND

	EXISTING WALL TO REMAIN		2X4 18 CELL FLUORESCENT LIGHT FIXTURE; MATCH EXISTING
	NEW WALL		RECESSED INCANDESCENT FIXTURE; MATCH EXISTING
	KEY NOTE		5/8" GWB CEILING, PAINTED
	DOOR NUMBER		2'-0" X 2'-0" ACOUSTICAL CEILING PANEL
	WINDOW TAG		DUPLEX RECEPTACLE
	ROOM NAME		LIGHT SWITCH
	WALL TAG		
	CEILING HEIGHT		
	2 X 4 LOW VOLTAGE BOX W/ PULL STRING		

RENOVATION FLOOR PLAN GENERAL NOTES

- A. ALL DIMENSIONS ARE GIVEN FROM FACE OF STUD TO FACE OF STUD, OR FROM CENTERLINE OF COLUMN GRID TO FACE OF STUD, UNLESS NOTED OTHERWISE. REGARDING EXISTING CONDITION, NOTE THAT SOME DIMENSIONS ARE PLUS OR MINUS AND MUST BE CONFIRMED IN THE FIELD BY THE CONTRACTOR PRIOR TO PARTITION ERECTION. ANY LAYOUT DEVIATION MUST BE APPROVED BY THE ARCHITECT.
- B. DO NOT SCALE DRAWINGS. IF DIMENSIONS ARE IN QUESTION, THE CONTRACTOR IS RESPONSIBLE FOR OBTAINING CLARIFICATION FROM THE ARCHITECT BEFORE CONTINUING WITH THE WORK.
- C. IN THE EVENT OF ANY DISCREPANCIES FOUND IN THE DRAWINGS, OR CONFLICTS BETWEEN THE ARCHITECTURAL DRAWINGS AND THOSE OF THE ENGINEERS, THE CONTRACTOR SHALL BE REQUIRED TO NOTIFY THE ARCHITECT BEFORE PROCEEDING WITH THE WORK.
- D. ALTHOUGH NOTES MAY BE GIVEN ONLY ONCE, MANY NOTES ARE TYPICAL FOR SIMILAR DETAILS AND CONDITIONS.
- E. THE CONTRACTOR SHALL MAINTAIN FIRE RATINGS OF EXISTING PARTITIONS AT ALL TIMES DURING DEMOLITION AND CONSTRUCTION. FILL ALL VOIDS IN NEW AND EXISTING FIRE RESISTANCE RATED PARTITIONS WITH UL FIRE RESISTANCE RATED FIRE STOP ASSEMBLY AS REQUIRED TO MAINTAIN THE FIRE RATING INDICATED.
- F. AREAS DISTURBED BY THE REMOVAL OF EXISTING CONSTRUCTION ARE TO BE PATCHED TO MATCH THE SURROUNDING FINISH, OR CONDITIONED TO RECEIVE NEW FINISH.
- G. VERIFY THE LOCATION OF ALL EQUIPMENT AND VERIFY SIZES, WALL OPENINGS, AND SUPPORT REQUIREMENTS WITH MANUFACTURER. PROVIDE OPENINGS, BRACING, AND REINFORCEMENT FOR EQUIPMENT AS REQUIRED BY MANUFACTURER.
- I. ALL DOORS ARE TO BE LOCATED 4" FROM ADJACENT WALL OR COUNTER, OR CENTERED IN WALL U.O.N.
- J. ALL FLOORING TRANSITIONS ARE TO OCCUR BENEATH THE CENTER OF THE DOOR.
- K. PROVIDE IN-WALL WOOD BLOCKING FOR ALL WALL MOUNTED EQUIPMENT, INCLUDING BUT NOT LIMITED TO: WALL CABINETS, DOOR STOPS, TELEVISION MOUNTS, COAT RODS, MAJOR ART WORK ITEMS, AND TOILET ACCESSORIES.
- L. CONTRACTOR IS TO USE THE MANUFACTURER'S RECOMMENDED INSTALLATION METHODS AND MATERIALS FOR ALL FINISHES. PREPARE ALL SUBSTRATES TO RECEIVE NEW FINISHES PER THE FINISH MANUFACTURER'S RECOMMENDATIONS.
- M. REWORK EXISTING SPRINKLER HEADS & HVAC SYSTEM AS REQUIRED FOR NEW WORK.
- N. G.C. TO REMOVE (8) 2 X 4 LIGHT FIXTURES FROM VACANT SPACE BELOW & RELOCATE TO NEW 'OPEN OFFICE 230'.

OCCUPANCY - BUSINESS (B)
CONSTRUCTION TYPE 2B

PROJECT TITLE

DATE:	11-2-2021
BY:	
CKD:	
REVISIONS:	

NEW 220-230 FLOOR PLAN