

Eastland Shopping Center

4680 BARDSTOWN RD LOUISVILLE KY

+ 20,000 Retail Space Available

.35 and 1 Acre Outlots Available



**BRENN
MONROE**

502-386-7927
bmonroe@walterwagner.com

**COREY
WASHBURN**

502-345-8332
cwashburn@walterwagner.com



Eastland Shopping Center

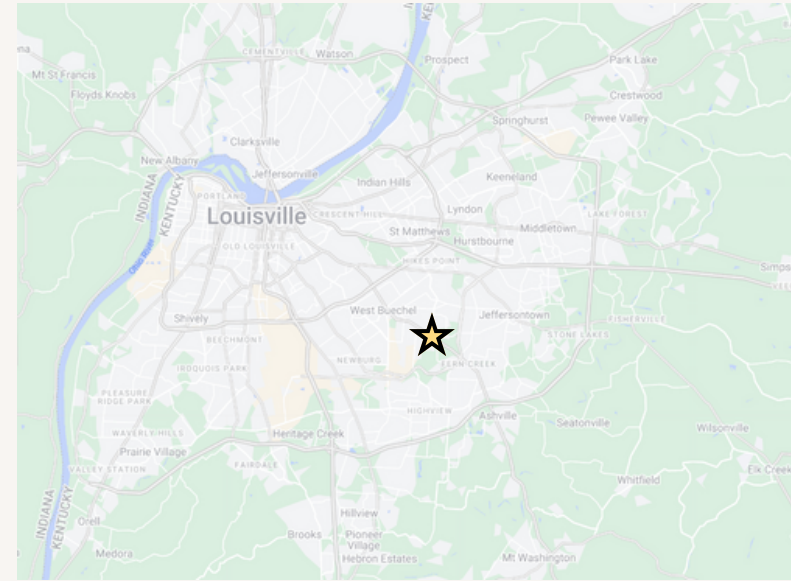
RETAIL DEVELOPMENT

HIGHLIGHTS

BARDSTOWN RD AND WATTERSON TRAIL
LOUISVILLE KY

Property Highlights:

- Boasts prominent visibility and convenient accessibility from Bardstown Rd with a traffic flow of over +33,000 vehicles
- 10.4 Acre Shopping Center with 320+ Parking Spaces
- Situated in an up and coming commercial zone surrounded by dynamic retail and residential developments
- Lots of usage opportunities and potential build outs.



Eastland Shopping Center

RETAIL DEVELOPMENT

MAP

BARDSTOWN RD AND WATTERSON TRAIL
LOUISVILLE KY



Front Retail-
AVAILABLE

- 13700 SF
- 8400 SF
- 4200 SF
- 5610 SF

\$13.50 PSF + NNN

Perfect Opportunity for
Retail of all kinds (Clothing,
Restaurants, Medical,
gyms. etc)

**OULOTS
AVAILABLE**

- 1 Acre (QSRs, medical)
- .35 Acre (Perfect for small
concept beverage)

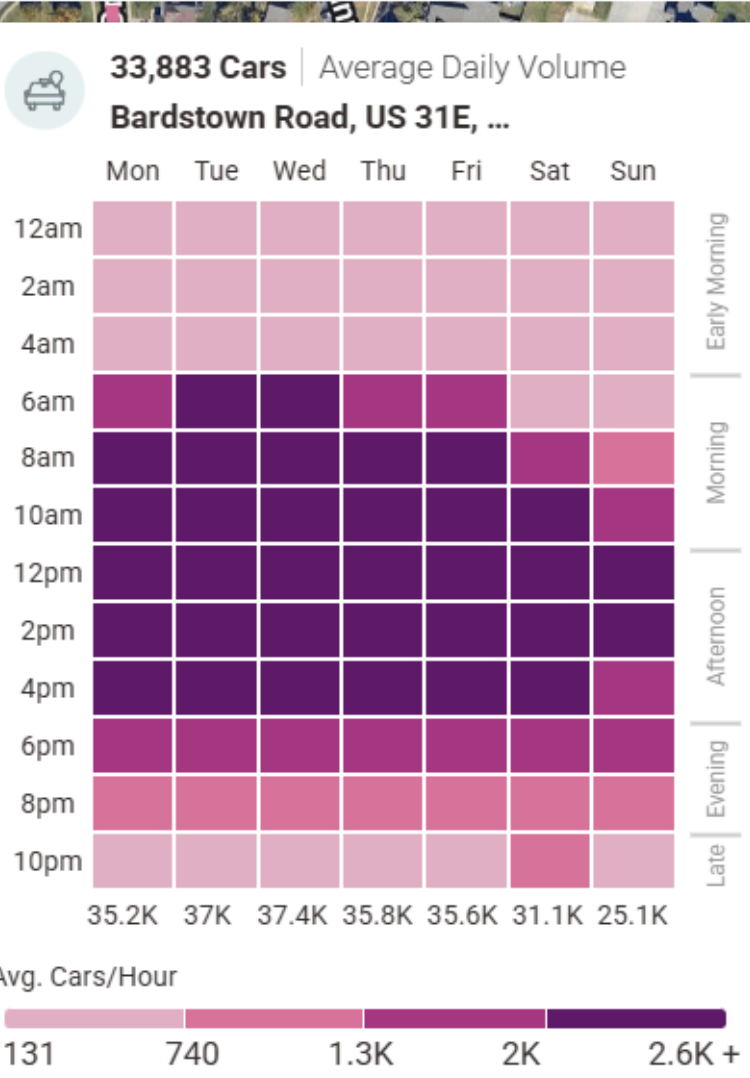


Eastland Shopping Center

RETAIL DEVELOPMENT

TRAFFIC

BARDSTOWN RD AND WATTERSON TRAIL
LOUISVILLE KY

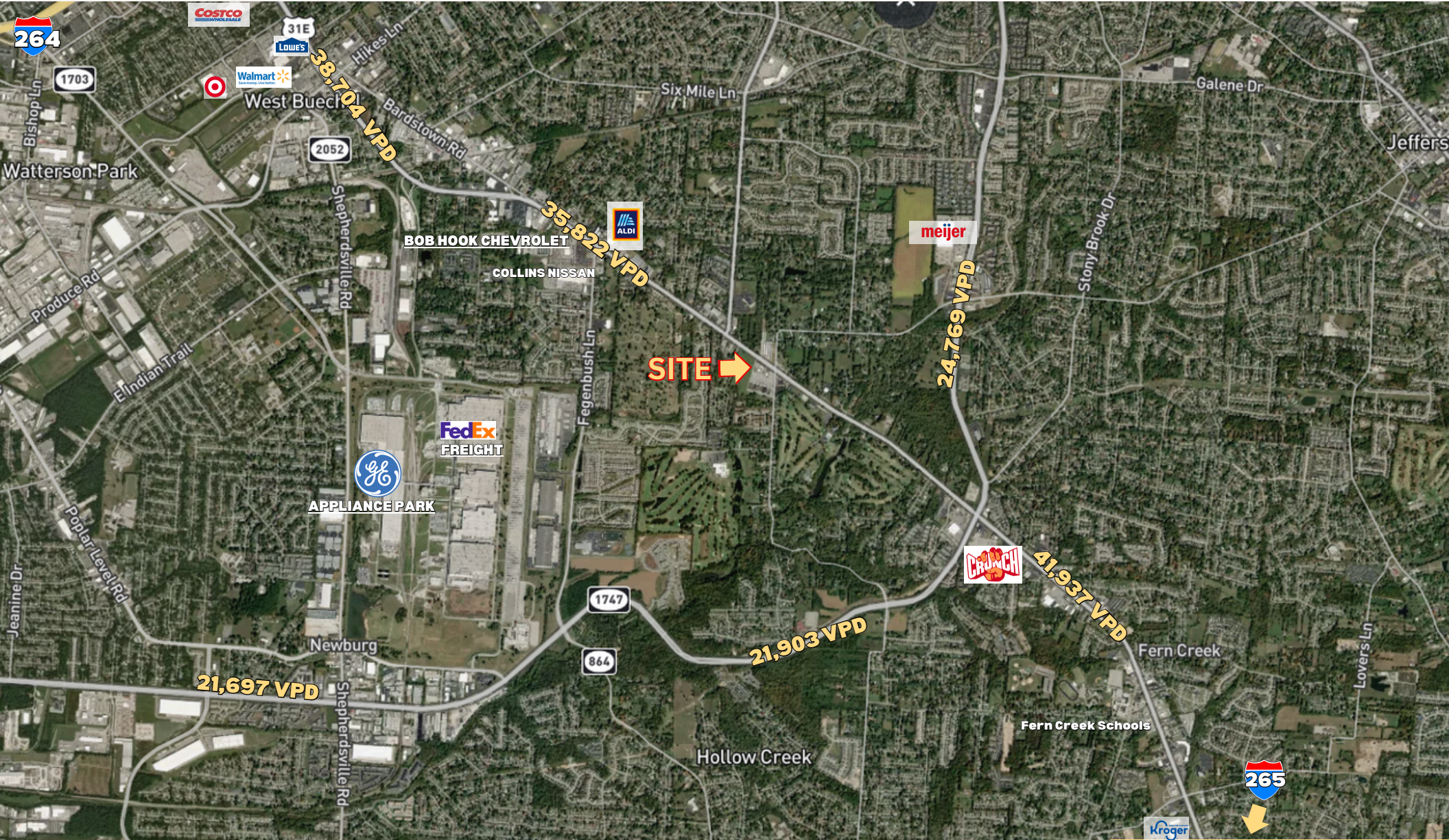


Eastland Shopping Center

RETAIL DEVELOPMENT

AREA MAP

BARDSTOWN RD AND WATTERSON TRAIL
LOUISVILLE KY



Contact us

**BRENN
MONROE**

502-386-7927

bmonroe@walterwagner.com

**COREY
WASHBURN**

502-345-8332

cwashburn@walterwagner.com