



FOR SALE

COMMERCIAL LAND IN DANVILLE, KY

BEN ALI DRIVE

PARCEL 34E-000-00 - DANVILLE, KY 40422



COLLEEN BARR, MBA, CCIM
859.489.6133
colleen@balrealstate.com



01: EXECUTIVE SUMMARY

BEN ALI DRIVE



PROPERTY DESCRIPTION

Prime Commercial Land available off the Bypass in Danville for sale. The 1.13 acre lot faces Perryville Road featuring almost 150 feet of frontage. The parcel has easy access from Ben Ali Drive. This property is suitable for many commercial uses with the zoning of Highway Business. Various commercial uses surround the property including a hotel, bank, auto care, and restaurants. Boyle County High School is located just across the Bypass.



1.13 ACRE LOT



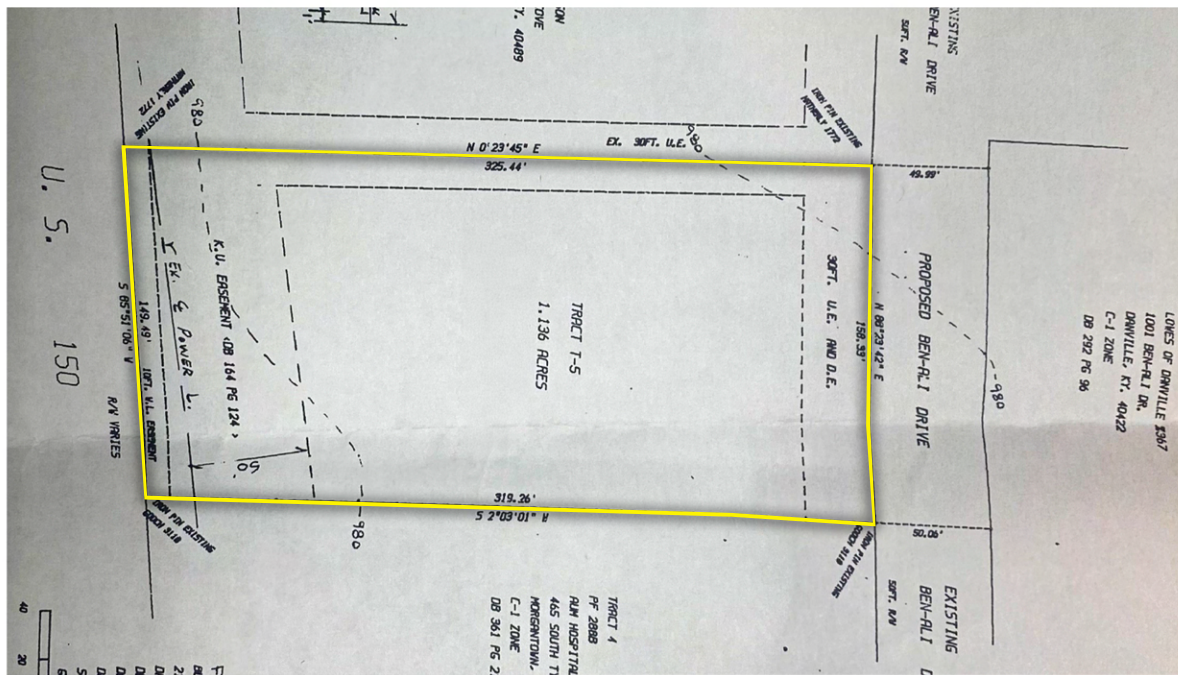
**FOR SALE
\$290,000**



**ZONED
HB**

BEN ALI DRIVE

PLAT



SURROUNDING AMENITIES

BEN ALI DRIVE

