

FOR LEASE

**INDUSTRIAL
FACILITY FOR
LEASE**

227 S 30TH ST



227 S 30th Street offers ±43,029SF of highly functional industrial space on a prominent corner site with access from South 30th Street and Congress Street. The facility features clear-span warehouse space, cold storage capabilities, and approximately 5,000 SF of office buildout—ideal for distribution, logistics, cold storage, and light industrial users seeking operational efficiency and flexibility.

INFORMATION

- 113'-20' CLEAR HEIGHTS
- SEVEN OVERHEAD DRIVE-THROUGH DOORS
- FORKLIFT LOADING FROM BOTH STREET FRONTAGES
- DOCK-HIGH RAMP ACCESS, AND 800-AMP, THREE-PHASE POWER
- ±50 PARKING SPACES
- LEASE RATE: \$5.25 SF/YEAR

Breana Harris
Associate
502-365-3840(o)
breana@prgproperty.com

Brigitte Owens
Vice President
502-365-3840(o)
brigitte@prgproperty.com



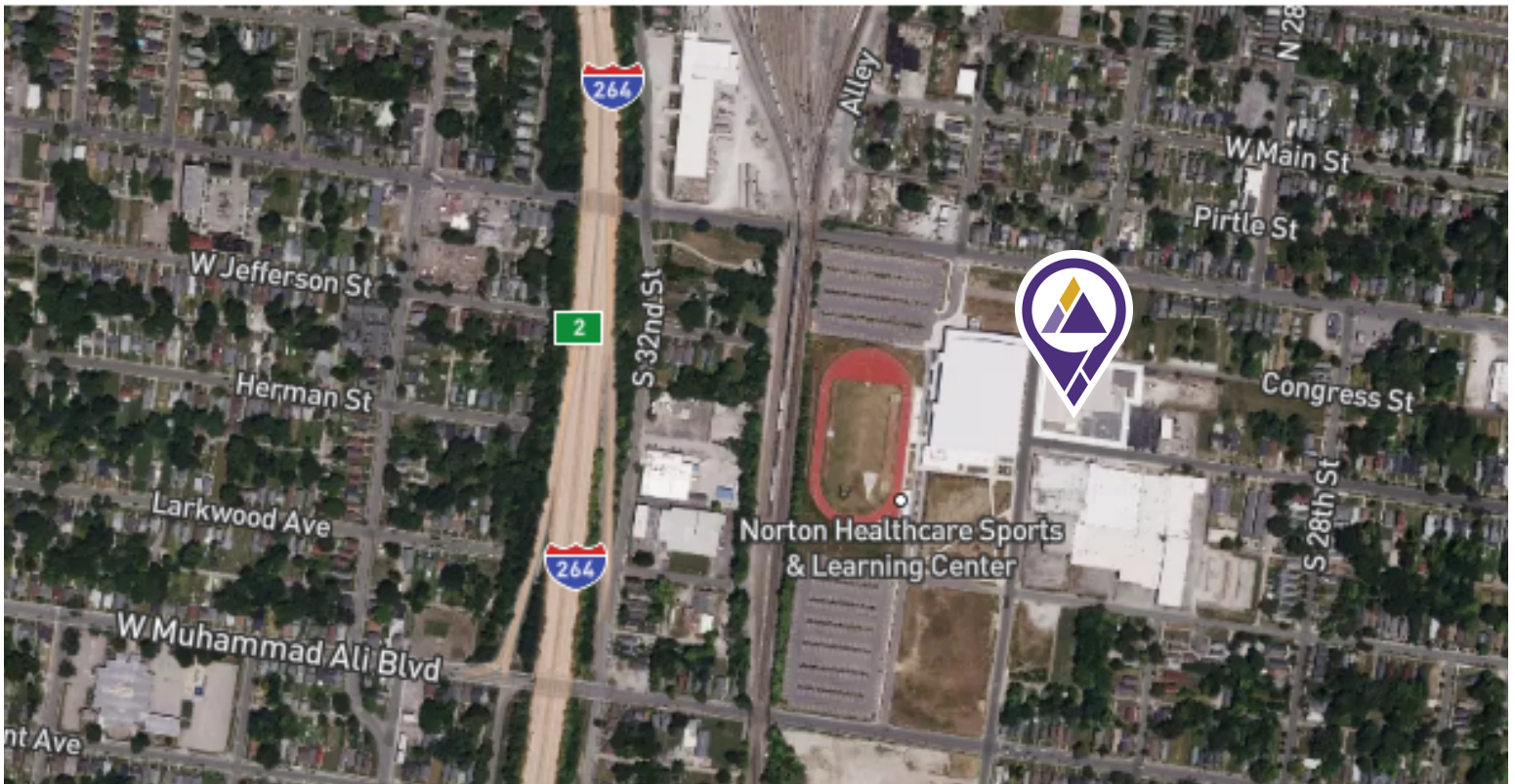
Breana Harris
Associate
502-365-3840(o)
breana@prgproperty.com

Brigitte Owens
Vice President
502-365-3840(o)
brigitte@prgproperty.com



Breana Harris
Associate
502-365-3840(o)
breana@prgproperty.com

Brigitte Owens
Vice President
502-365-3840(o)
brigitte@prgproperty.com



Breana Harris
Associate
502-365-3840(o)
breana@prgproperty.com



Brigitte Owens
Vice President
502-365-3840(o)
brigitte@prgproperty.com