



**519 WALNUT MEADOW ROAD
BEREA, KY 40403**



Adam Boardman
C: 859.338.8243
O: 859.309.0099
Adam@BALRealEstate.com



Luke Snyder
C: 502.229.6612
O: 859.309.0099
Luke@BALRealEstate.com



PROPERTY DESCRIPTION:

+/- 4 Acres
Zoned B-2

Welcome to an exceptional opportunity to acquire 4 acres of prime commercial land located on Walnut Meadow Rd. in the vibrant city of Berea, Kentucky. This expansive parcel offers an ideal canvas for various commercial ventures, providing a highly visible and accessible location for your business.

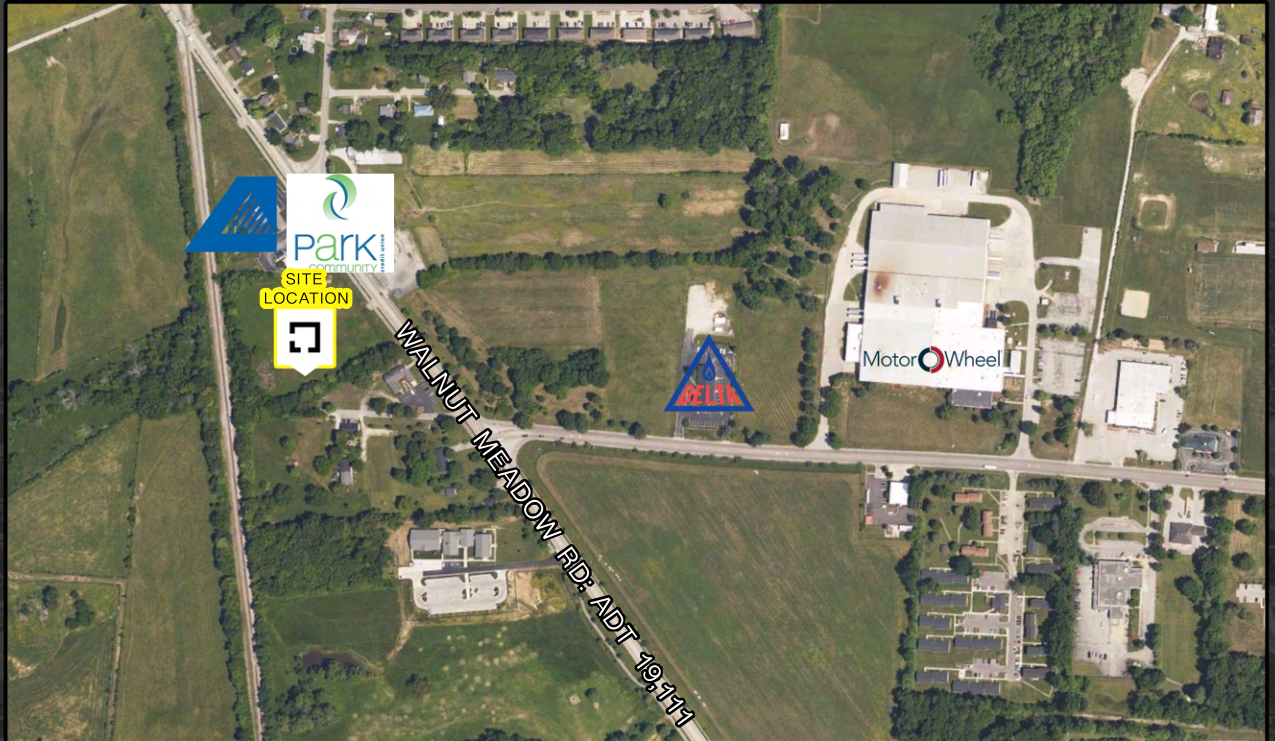


PROPERTY HIGHLIGHTS:

Consisting of 4 acres of flat, well-maintained land, this property provides easy access and great visibility. This site is ideal for a number of commercial users including office, retail, light manufacturing/warehouse, and numerous end users.

Ideally situated between Park Community Bank and First Baptist Church with exceptional road frontage.

The property benefits from well-developed infrastructure and utilities, including access to electricity, water, sewage, and high-speed internet connections. These essential amenities are readily available at the site.





LOCATION DESCRIPTION:

Located just 1 mile from Richmond Rd. in Berea, Walnut Meadow Rd. serves as a main connector between Richmond Rd and I-75. The site is ideally located between Park Community Credit Union and First Baptist Church in Berea.



Adam Boardman
C: 859.338.8243
O: 859.309.0099
Adam@BALRealEstate.com



Luke Snyder
C: 502.229.6612
O: 859.309.0099
Luke@BALRealEstate.com