

# RETAIL FOR LEASE

## 707 STATE ST

707 STATE ST, NEWBURGH, IN 47630



### PROPERTY OVERVIEW

Suite A:

- Available immediately
- Lease Rate: \$2,250/ mo/ NNN
- Great Newburgh location
- Anchored by Tin Fish Restaurant
- Intersection of Sharon Road and State Street
- Traffic count of 6,264 Cars Per Day

### OFFERING SUMMARY

**AVAILABLE SF:** 1,237 SF

**LEASE RATE:** \$2,250/mo

**LEASE TYPE:** Triple Net (NNN)

**LOT SIZE:** 1.63 Acres

**PARKING:** Ample

**TRAFFIC COUNT:** 6,264 AADT

**YEAR BUILT:** 2018



#### HAHN KIEFER REAL ESTATE SERVICES

1352 E Division St  
Evansville, IN 47711



#### JOE KIEFER

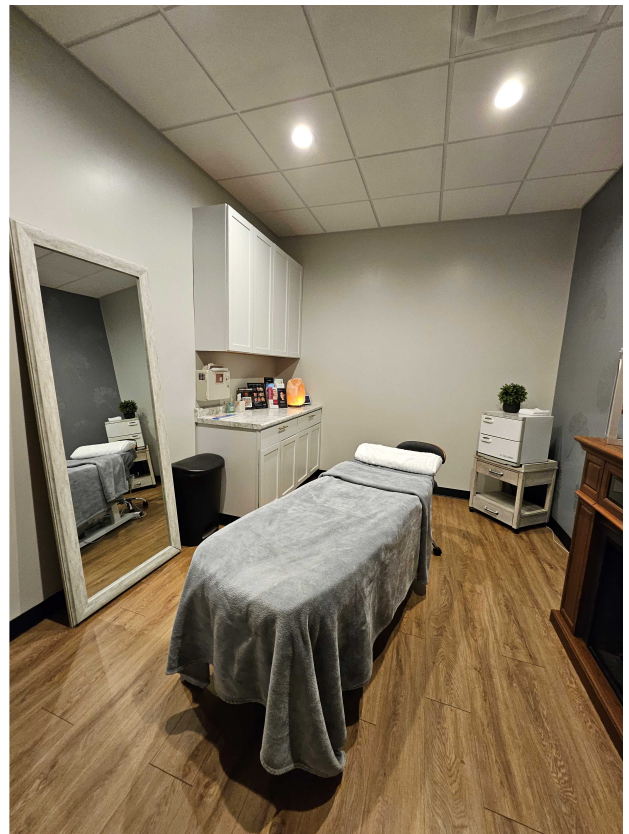
President / Managing Broker  
office: (812) 604-5973  
cell: 812.604.5973  
jkiefer@hahnkiefer.com  
License #: RB14037711, Indiana

#### JOSEY MCLAUGHLIN

Associate Broker  
office: (812) 549-9114  
cell: (812) 549-9114  
jmclaughlin@hahnkiefer.com

# PHOTOS

707 STATE ST | NEWBURGH, IN 47630



**HAHN KIEFER REAL ESTATE SERVICES**  
1352 E Division St  
Evansville, IN 47711

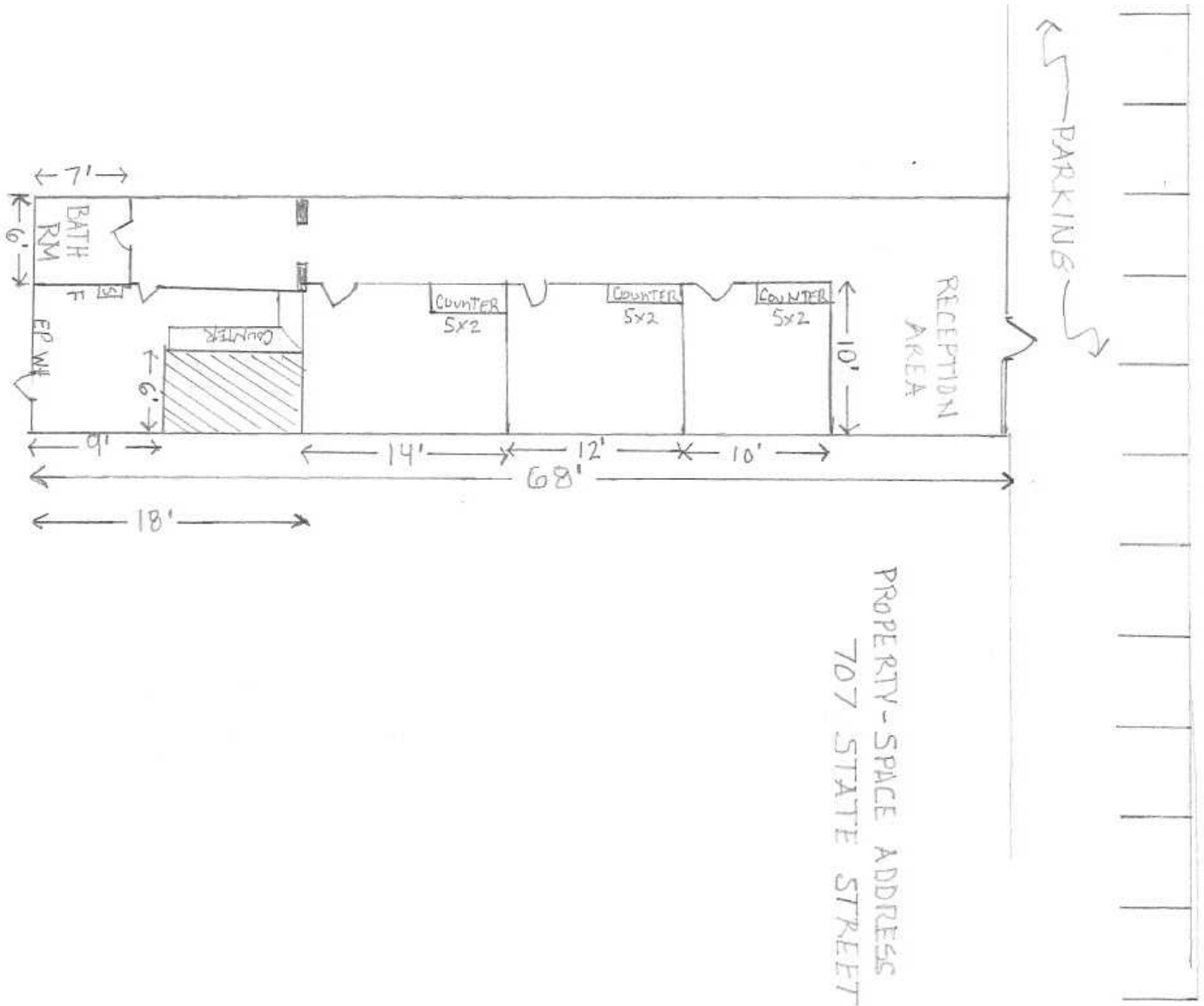


**JOE KIEFER**  
President / Managing Broker  
O: (812) 604-5973  
C: 812.604.5973  
jkiefer@hahnkiefer.com  
License #: RB14037711, Indiana

**JOSEY MCLAUGHLIN**  
Associate Broker  
O: (812) 549-9114  
C: (812) 549-9114  
jmclaughlin@hahnkiefer.com

# FLOOR PLAN

707 STATE ST | NEWBURGH, IN 47630



**HAHN KIEFER REAL ESTATE SERVICES**

1352 E Division St  
Evansville, IN 47711



**JOE KIEFER**

President / Managing Broker

O: (812) 604-5973

C: 812.604.5973

[jkiefer@hahnkiefer.com](mailto:jkiefer@hahnkiefer.com)

License #: RB14037711, Indiana

**JOSEY MCLAUGHLIN**

Associate Broker

O: (812) 549-9114

C: (812) 549-9114

[jmclaughlin@hahnkiefer.com](mailto:jmclaughlin@hahnkiefer.com)