



FOR SALE

WARSAW, KY QCT APPROVED 42-UNIT DEVELOPMENT

MEADOW CREEK LN
WARSAW, KY 41095



This 3.97-acre parcel in Warsaw, KY comes with fully approved plans for 42 units as part of a Phase 2 development. The property is subdivided into six lots, offering flexibility for builders and investors. Three lots are priced at \$60K and three at \$55K.

Located in a peaceful, historic river town, the site is minutes from Belterra Casino, Kentucky Speedway, and nearby recreation. The land sits within a Qualified Census Tract (QCT), making it attractive for developers using tax credit incentives.

Warsaw's housing market continues to grow, with rising demand for new development. The owner is open to Joint Venture opportunities, creating a rare chance to acquire land with entitlements already in place and bring a well-positioned project to life.

INFORMATION

- ▶ **3.97 ACRES**
- ▶ **\$330,000**
- ▶ **LIES WITHIN A QUALIFIED CENSUS TRACT (QCT)**
- ▶ **APPROVED PHASE 2 PLANS**

Reed Weinberg

President and Principal
502-365-3840(o)
reed@prgproperty.com

Taylor Thompson

Partner and Principal Broker
502-365-3840(o)
taylor@prgproperty.com

Desmond Martin

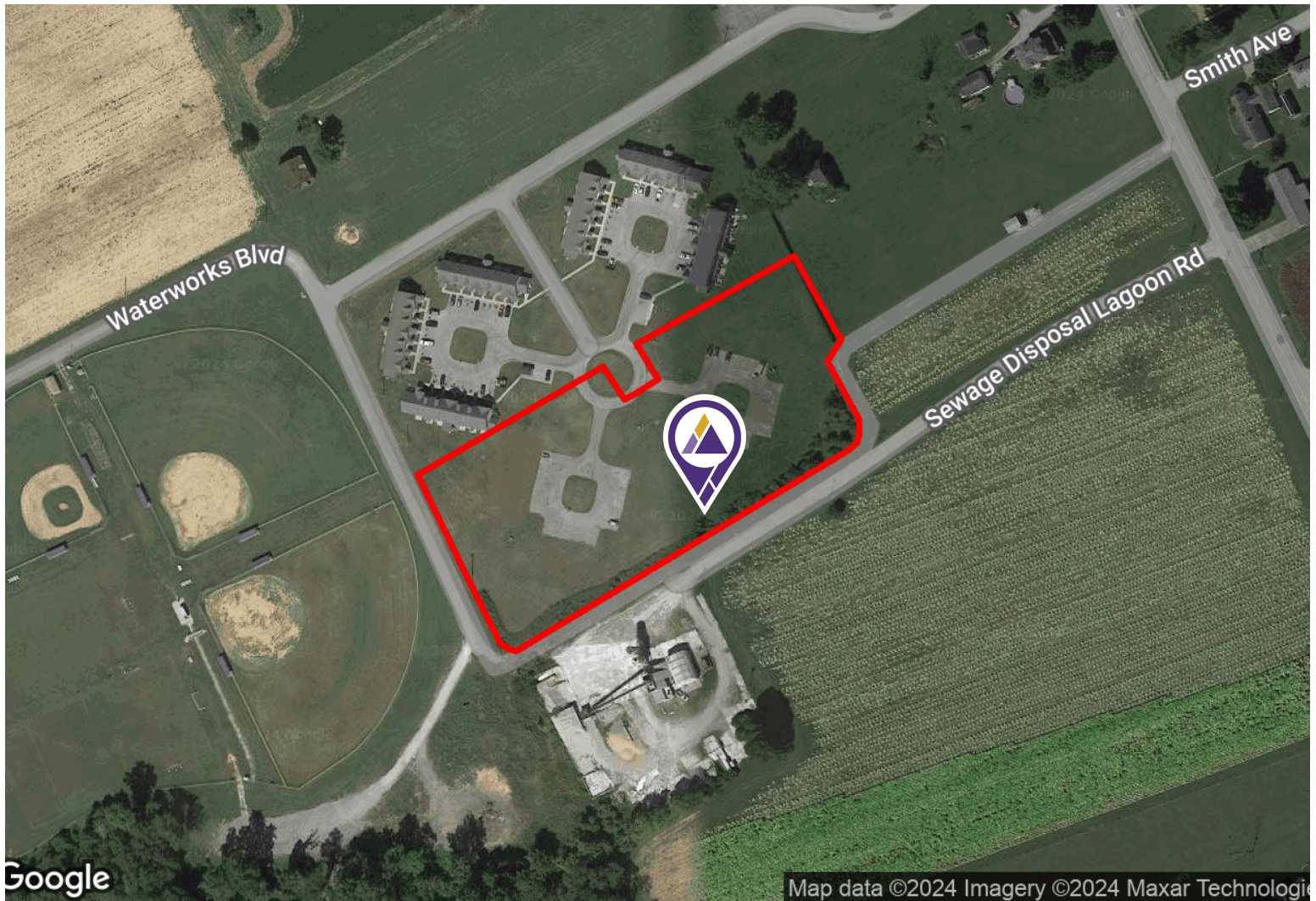
Associate
502-553-3296(m) 502-365-3840(o)
desmond@prgproperty.com



Reed Weinberg
President and Principal
502-365-3840(o)
reed@prgproperty.com

Taylor Thompson
Partner and Principal Broker
502-365-3840(o)
taylor@prgproperty.com

Desmond Martin
Associate
502-553-3296(m) 502-365-3840(o)
desmond@prgproperty.com



This information has been obtained from sources believed reliable. We have not verified it and make no guarantee, warranty or representation about it. Any projections, opinions, assumptions or estimates used are for example only and do not represent the current or future performance of the property.

Reed Weinberg
President and Principal
502-365-3840(o)
reed@prgproperty.com

Taylor Thompson
Partner and Principal Broker
502-365-3840(o)
taylor@prgproperty.com

Desmond Martin
Associate
502-553-3296 m) 502-365-3840(o)
desmond@prgproperty.com