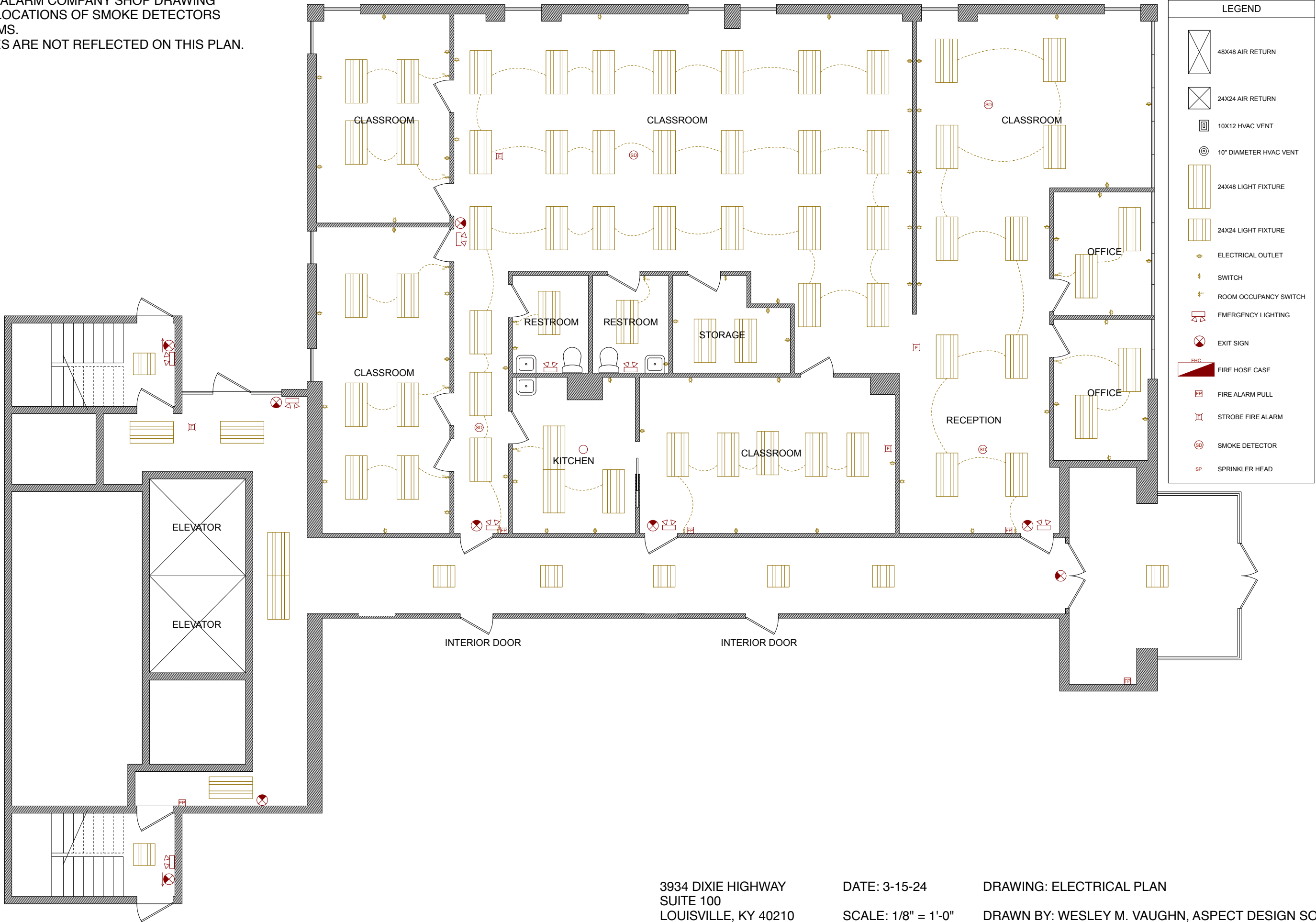


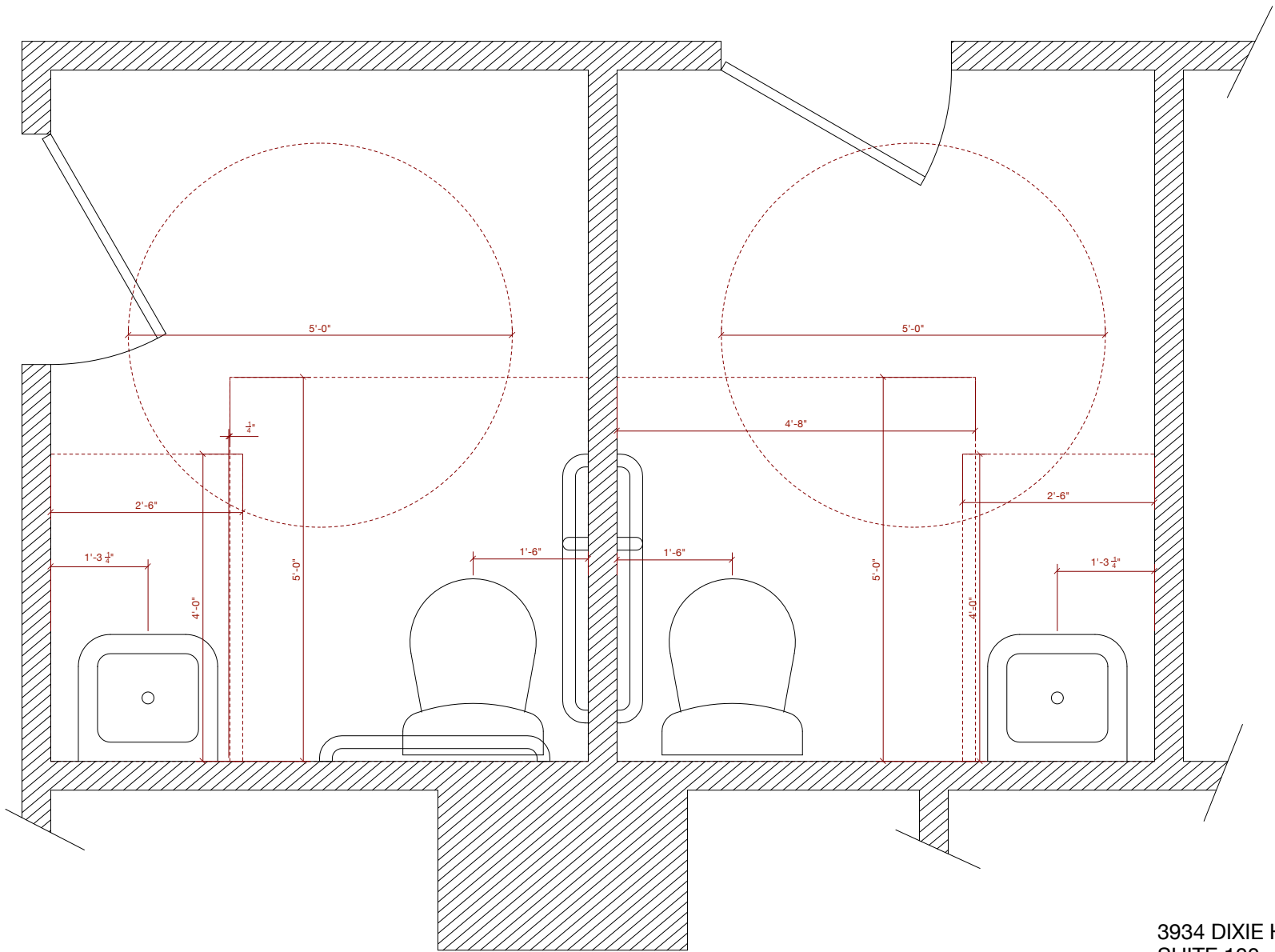
REFER TO FIRE ALARM COMPANY SHOP DRAWING  
FOR UPDATED LOCATIONS OF SMOKE DETECTORS  
AND FIRE ALARMS.  
THESE CHANGES ARE NOT REFLECTED ON THIS PLAN.





NOTES:

- A) minimum 5 foot diameter turning radius for wheelchair access,
  - B) water closet shall have a minimum 56 inch x 60 inch clear floor space with no other fixture located within the listed space,
  - C) water closets utilized by clients shall be located where the centerline of the water closet measured to the wall is 12 inches minimum and 18 inches maximum,
  - D) water closet shall have a height of 11-17 inches above finished floor to the seat,
  - E) Rear Grab Bar shall be mounted 18-27 inches above finished floor, minimum 36 inches in length, Side Grab Bar mounted 18-27 inches above finished floor, minimum 42 inches in length, and the vertical grab bar mounted 21-30 inches above finished floor, also mounted with a distance of 34-36 inches from the rear wall and a minimum grab bar length of 18 inches,
  - F) Sinks shall have a clear floor space of 30 inch x 48 inch with no other fixture within,
  - G) Height of sink shall be no more than 34 inches above finished floor.
- Chapters 3 & 6, ICC A117.1-2009



3934 DIXIE HIGHWAY  
SUITE 100  
LOUISVILLE, KY 40210

DATE: 3-15-24

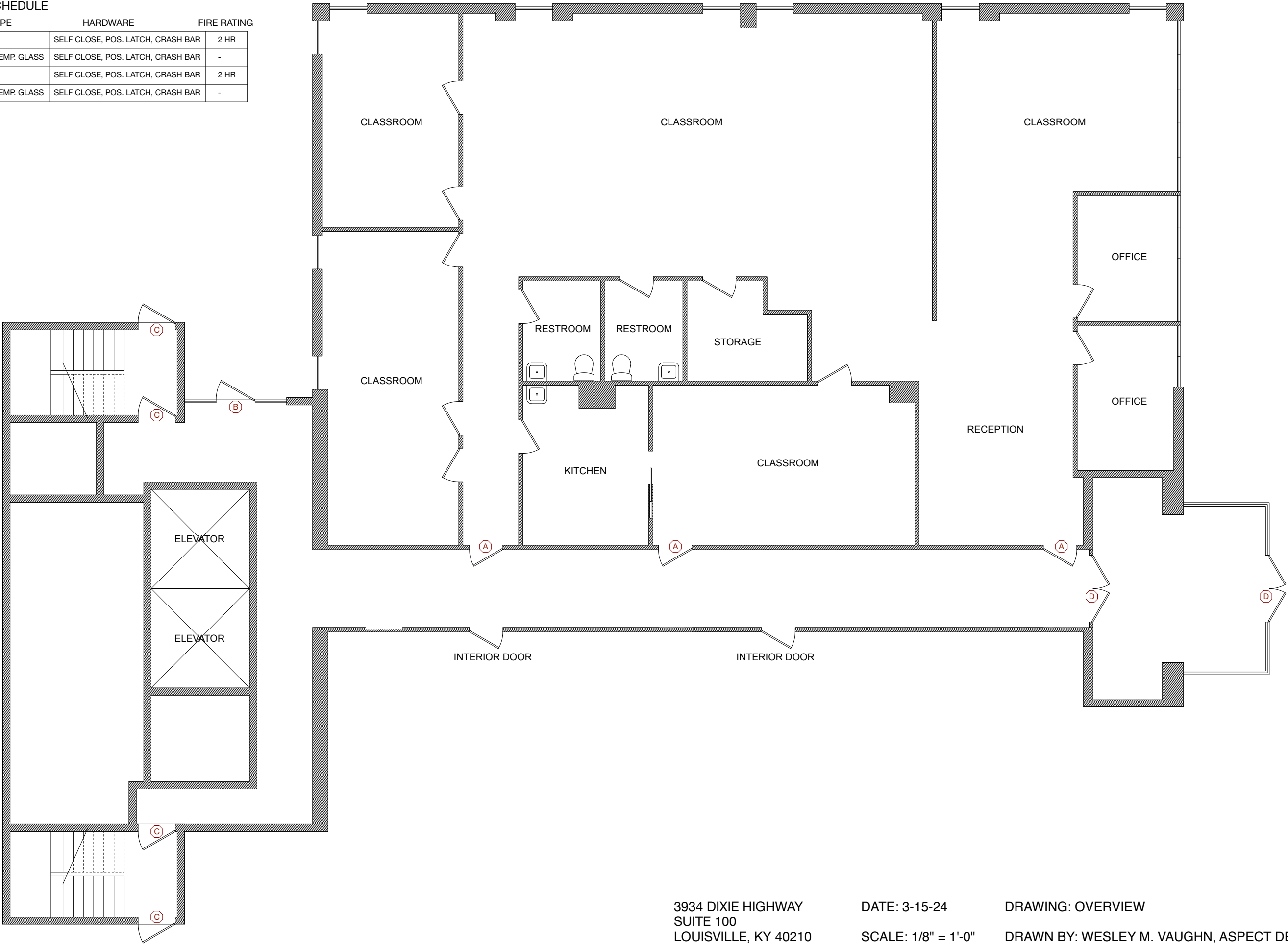
SCALE: 1/2" = 1'-0"

DRAWING: RESTROOM PLAN

DRAWN BY: WESLEY M. VAUGHN, ASPECT DESIGN SOLUTIONS

EGRESS DOOR SCHEDULE

	DIMENSIONS	TYPE	HARDWARE	FIRE RATING
A	36" X 80"H	STEEL	SELF CLOSE, POS. LATCH, CRASH BAR	2 HR
B	42" X 80"H	ALUM. & TEMP. GLASS	SELF CLOSE, POS. LATCH, CRASH BAR	-
C	42" X 80"H	STEEL	SELF CLOSE, POS. LATCH, CRASH BAR	2 HR
D	72" X 80"H	ALUM. & TEMP. GLASS	SELF CLOSE, POS. LATCH, CRASH BAR	-



3934 DIXIE HIGHWAY  
SUITE 100  
LOUISVILLE, KY 40210

DATE: 3-15-24  
SCALE: 1/8" = 1'-0"

DRAWING: OVERVIEW  
DRAWN BY: WESLEY M. VAUGHN, ASPECT DESIGN SOLUTIONS