



**2,000 ± SF
AVAILABLE**

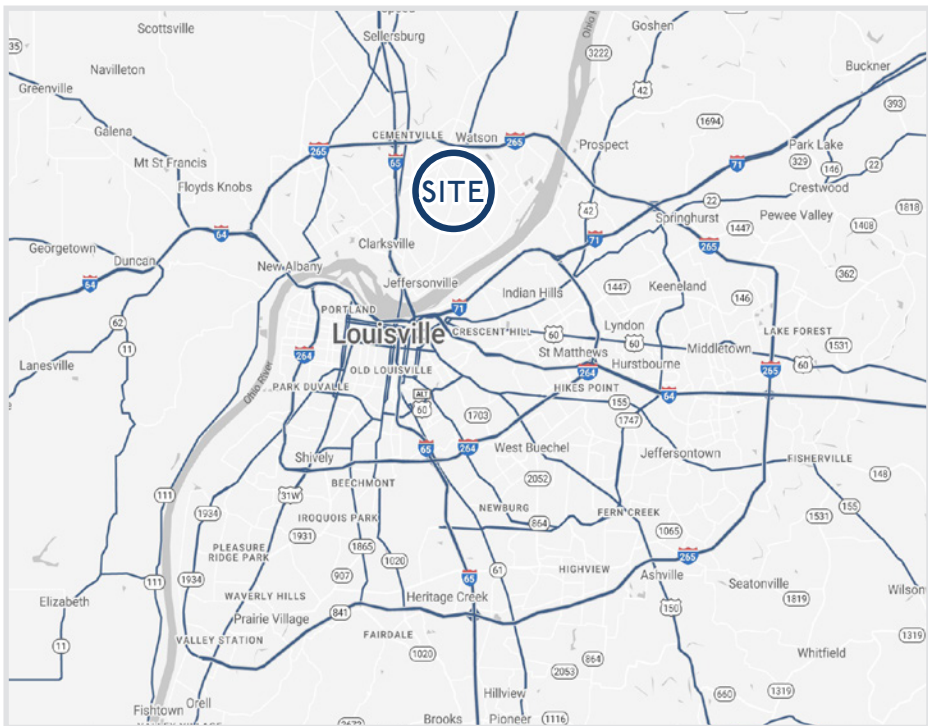
FOR LEASE

**2711 EAST 10TH STREET
JEFFERSONVILLE, INDIANA**

HOGAN
REAL ESTATE

PROPERTY DESCRIPTION

2711 EAST 10TH STREET
JEFFERSONVILLE, IN



Features

- + The center is surrounded by mature, densely populated neighborhoods.
- + Convenient access to signalized traffic light at Thompson Lane and full access from 10th Street.
- + Over 23,000 VPD on 10th Street in front of site.
- + National retailers in the immediate area include Meijer, Kohl's, Kroger, Walgreens, and Rural King.
- + Located across from Jeffersonville High School
- + With the extension of the I-265 bridge, Jeffersonville, Indiana is the fastest growing Southern Indiana market.



2,000 ± SF
INLINE SPACE
available for lease



Prominent Location
& EXCELLENT VISIBILITY
in the core of Jeffersonville's
retail trade area

Demographics

	1 Mile	3 Miles	5 Miles
Population	10,720	52,641	122,866
Average Household Income	\$80,240	\$80,587	\$98,162

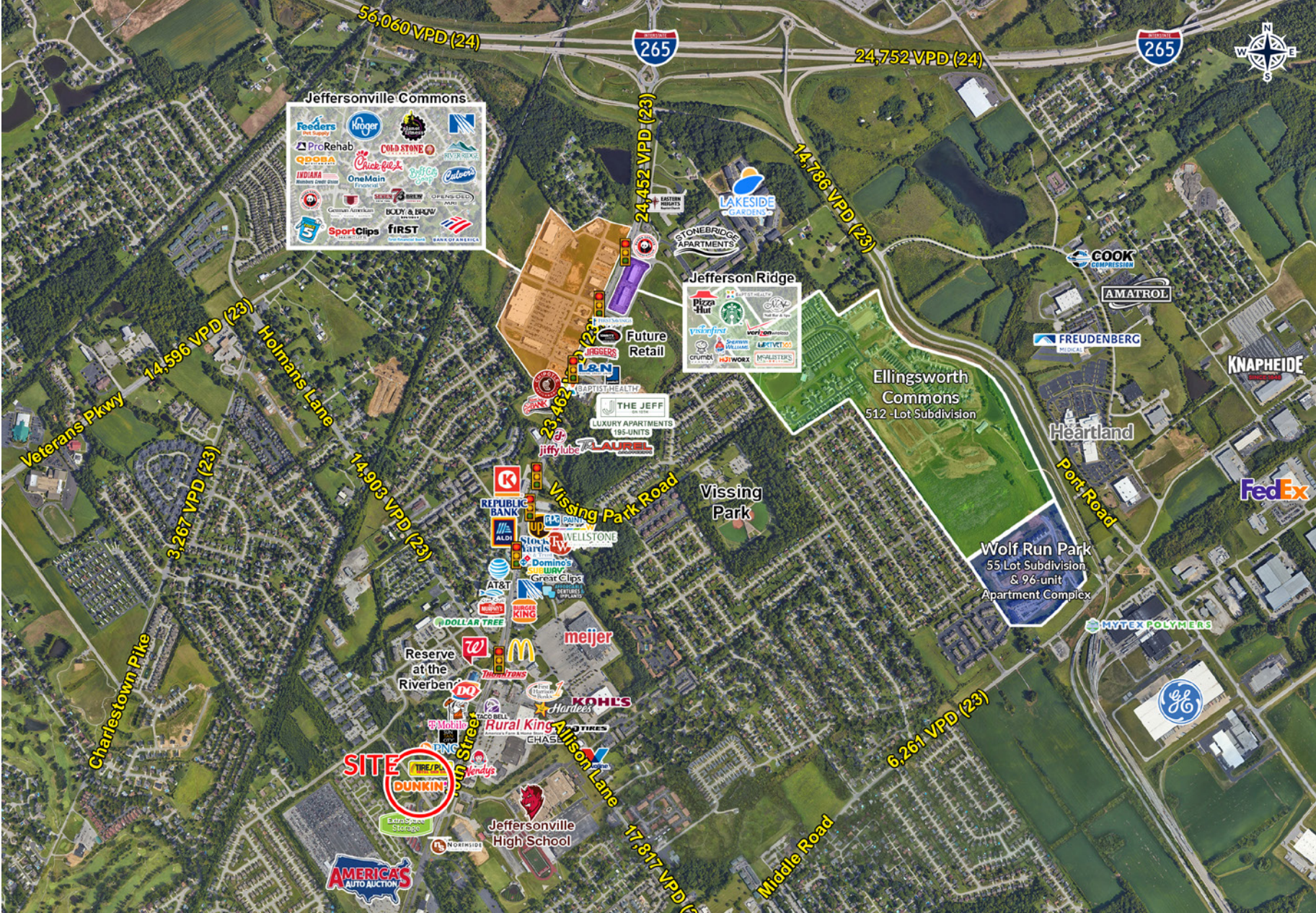
BUILDING PHOTOS

2711 EAST 10TH STREET
JEFFERSONVILLE, IN



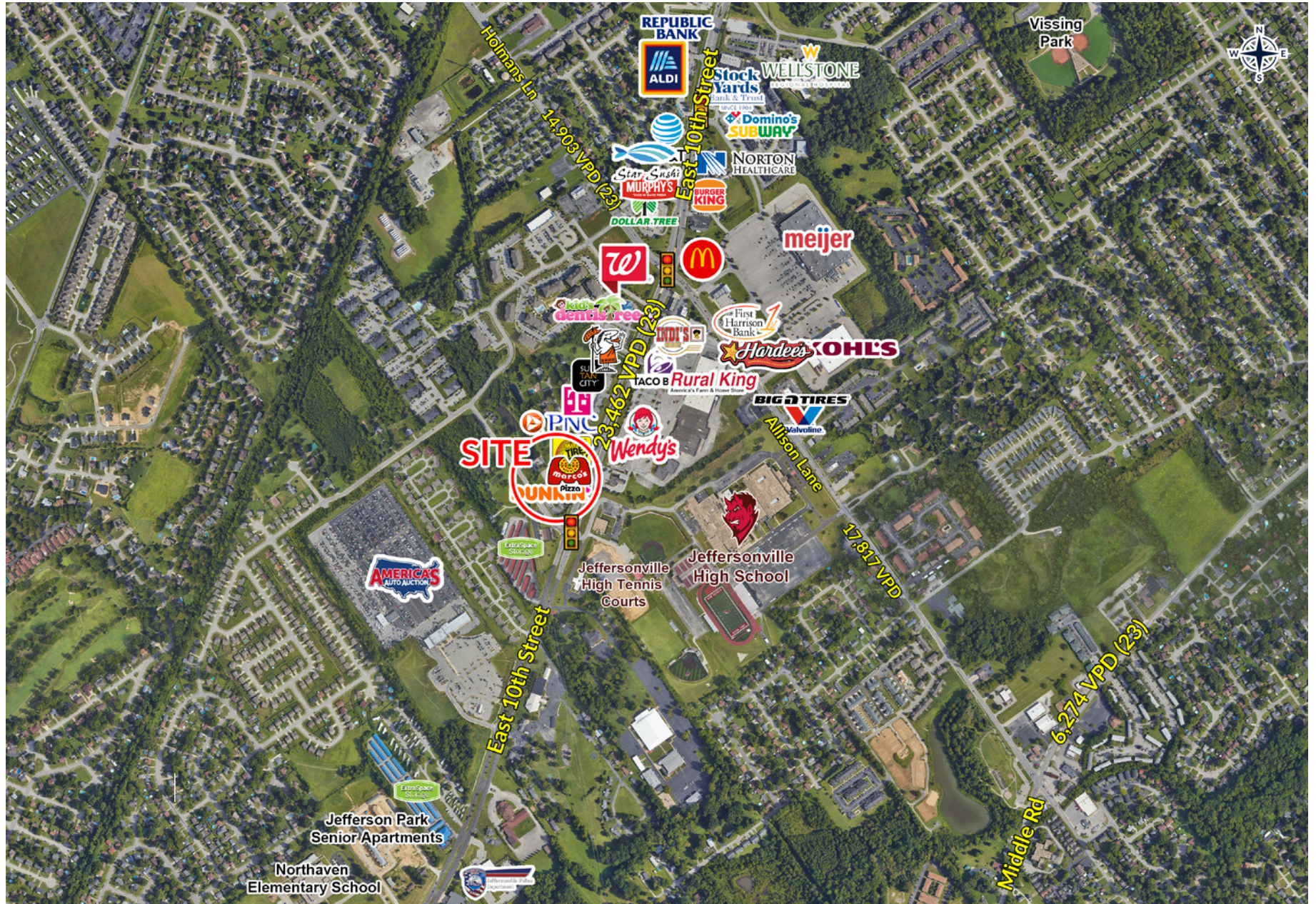
TRADE AREA AERIAL

2711 EAST 10TH STREET
JEFFERSONVILLE, IN



IMMEDIATE AREA AERIAL

2711 EAST 10TH STREET
JEFFERSONVILLE, IN





**2,000 ± SF
AVAILABLE**

HOGAN REAL ESTATE PROPERTY CONTACTS

+ **Jim Conklin**
502.271.5817
jconklin@hogandev.com

+ **Mike Leonard**
502.271.5809
mleonard@hogandev.com