



**FOR SALE**

CANE RUN ROAD  
LOUISVILLE, KY

**HOGAN**  
REAL ESTATE

# PROPERTY DESCRIPTION

CANE RUN RD  
LOUISVILLE, KY

## Features



0.48± acre lot at the signalized intersection of Cane Run Rd and Kaufman Ln



Located less than two miles from the Jefferson Riverport, a 2,000+ acre industrial and commercial hub that employs more than 6,500. The riverport is home to more than 120 companies, including Kentucky Trailer, Dynacraft, Allgood Food Company, Coca-Cola Bottling Consolidated and more



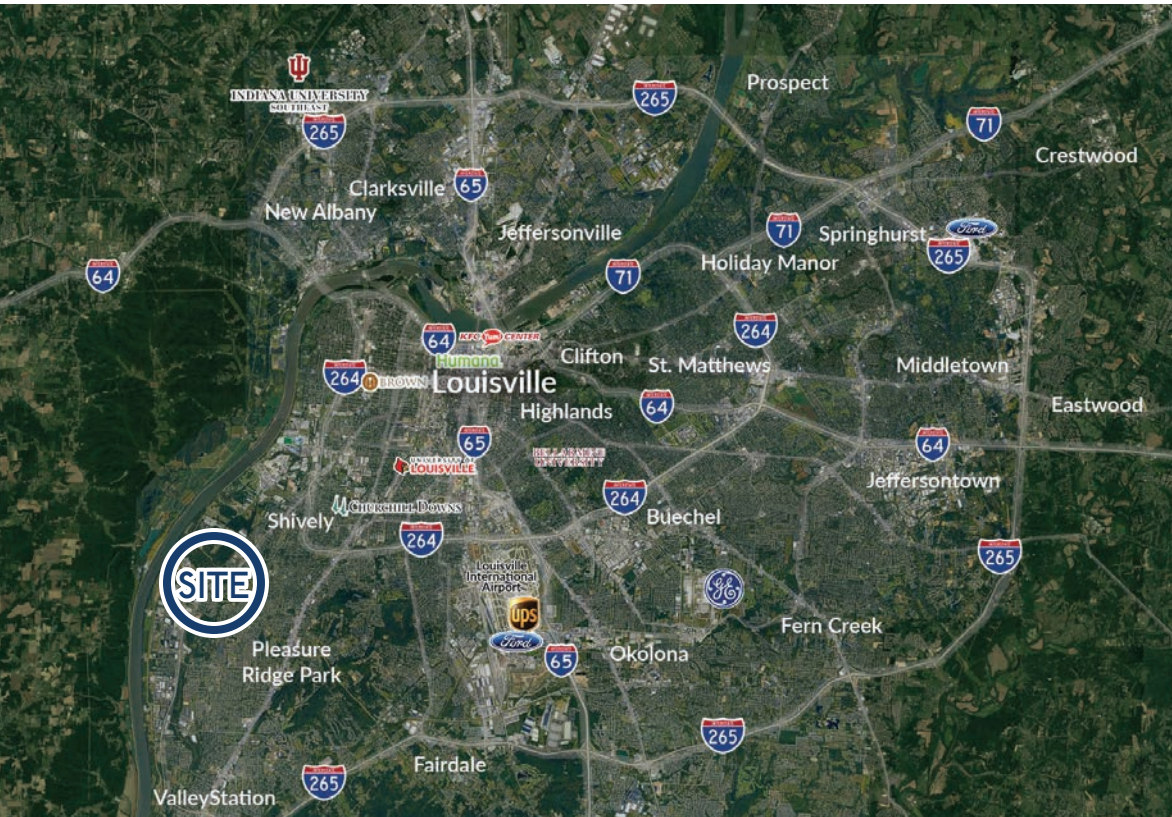
Site has excellent visibility from Cane Run Road, which receives over 36,800 VPD (20)



Immediate area retailers include Walgreen's, Dollar Tree, Zips Car Wash, Sonic, MainFinancial and Cato Fashion



Situated near the entrance of a newly constructed 119-unit apartment complex, Cane Run Station



**0.48± Acres**  
AVAILABLE  
for sale



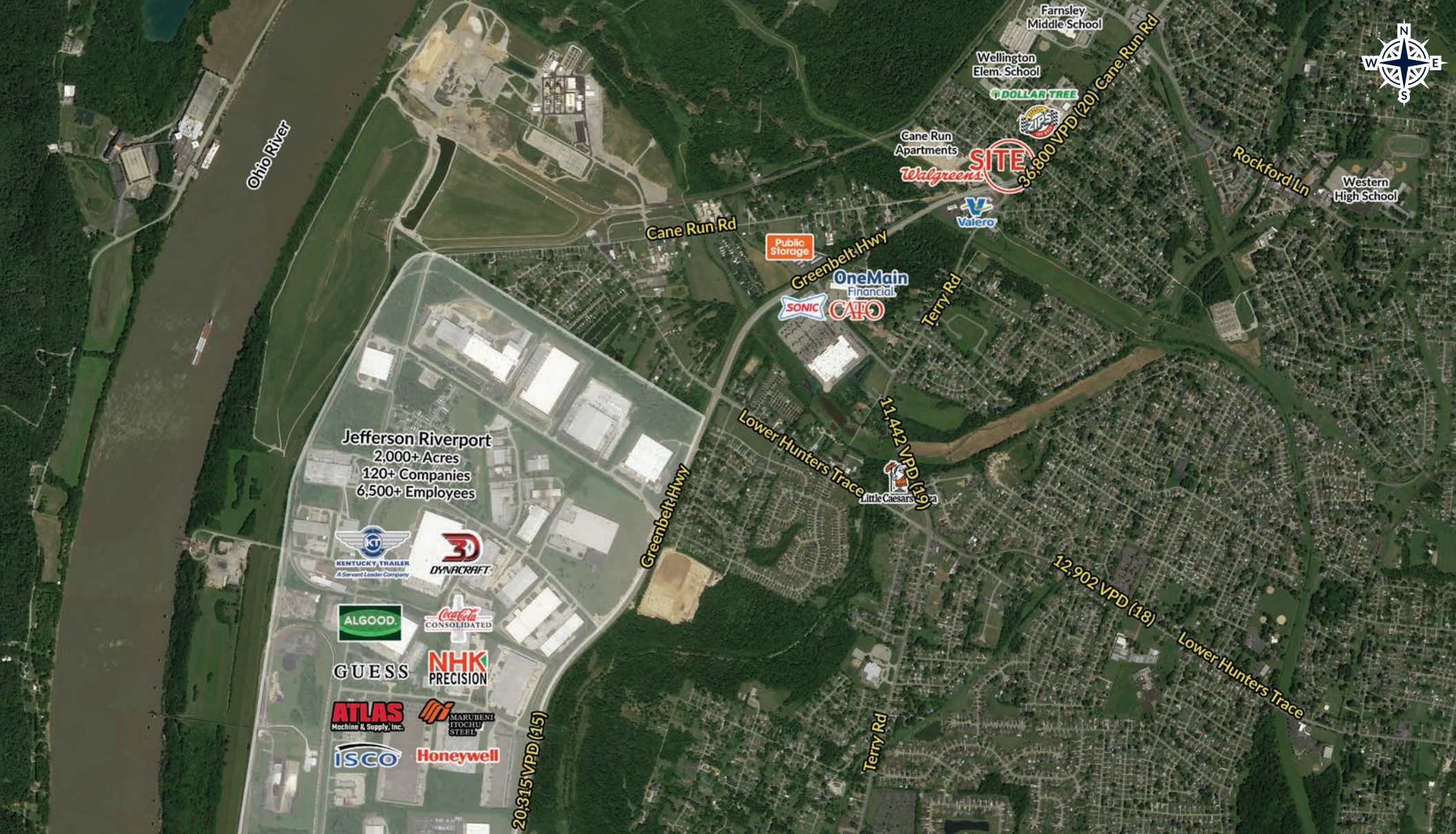
**Over 36,800 (20)**  
VEHICLES PER DAY  
on Cane Run Rd  
in front of site

## Demographics

	1 Mile	3 Miles	5 Miles
Population	7,256	54,715	137,429
Median Household Income	\$56,102	\$54,003	\$51,648
Daytime Population	1,847	17,073	138,388

# TRADE AERIAL

CANE RUN RD  
LOUISVILLE, KY



# HOGAN REAL ESTATE

PROPERTY CONTACT

---



**Justin Phelps**

D: 502.271.5820

M: 502.426.1050

F: 502.426.1223

[jphelps@hogandev.com](mailto:jphelps@hogandev.com)



**Hunter Jacobs**

D: 502.271.5812

M: 502.426.1050

C: 502.639.4727

F: 502.426.1223

[hjacobson@hogandev.com](mailto:hjacobs@hogandev.com)