

501 S. Second Street

2nd Floor Medical/Office Space

501 S. Second Street
Louisville, KY 40202
www.cbre.com/louisville

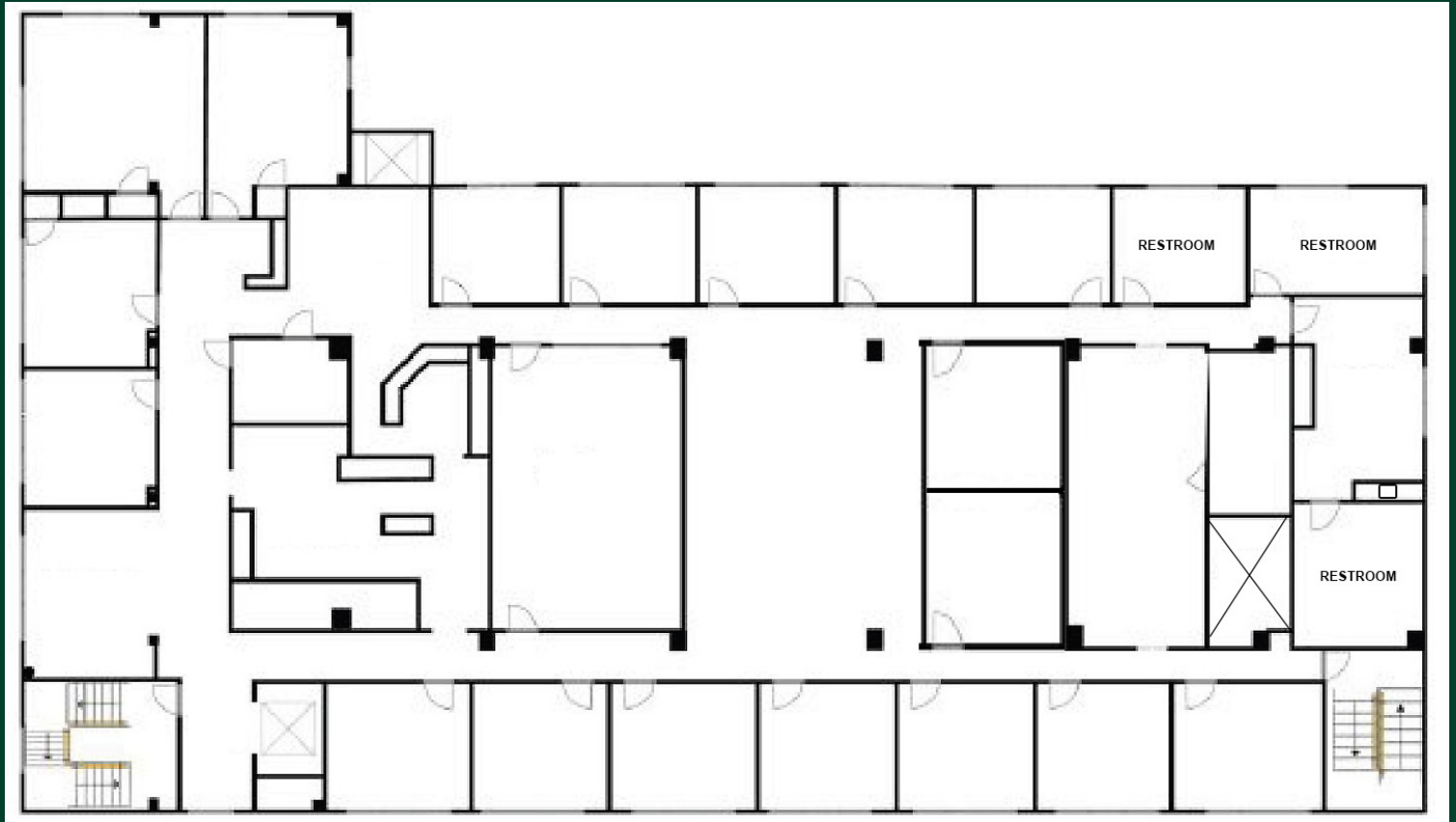
7,460 SF Available



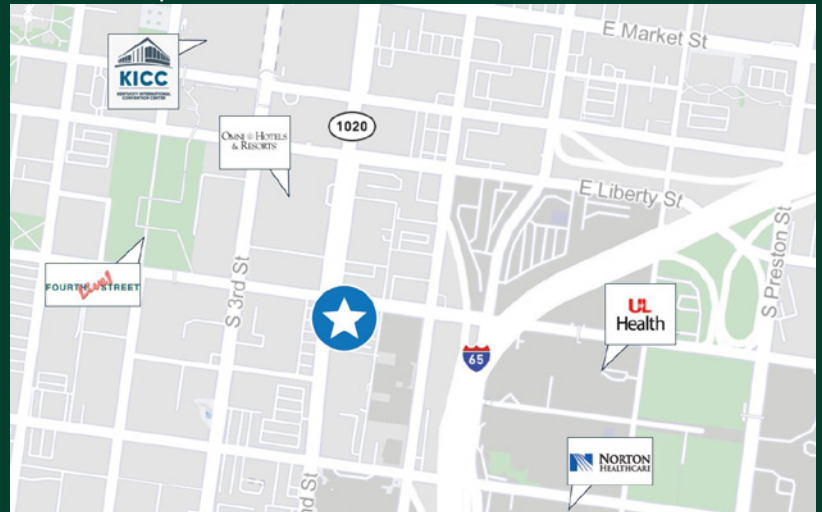
Building Features

- + Second floor available - 7,460 SF
- + On site parking
- + Building renovation in 2006
- + Efficient layout with perimeter offices, conference room, and break area
- + Conveniently located two blocks from 4th Street Live! between the Central Business District and Medical Center
- + Easy access to Interstate 64 and Interstate 65
- + Exterior signage available

2nd Floor Plan - 7,460 SF



Location Map



Contact Us

Rick Ashton, CCIM
Senior Vice President
+1 502 412 7612
rick.ashton@cbre.com

Jeff Dreher, SIOR
Senior Vice President
+1 502 412 7610
jeff.dreher@cbre.com

© 2025 CBRE, Inc. All rights reserved. This information has been obtained from sources believed reliable, but has not been verified for accuracy or completeness. You should conduct a careful, independent investigation of the property and verify all information. Any reliance on this information is solely at your own risk. CBRE and the CBRE logo are service marks of CBRE, Inc. All other marks displayed on this document are the property of their respective owners, and the use of such logos does not imply any affiliation with or endorsement of CBRE. Photos herein are the property of their respective owners. Use of these images without the express written consent of the owner is prohibited.