

OFFICE FOR LEASE

1449 KIMBER LN

1449 KIMBER LN, EVANSVILLE, IN 47715



PROPERTY OVERVIEW

Suite 100 A:

- Lease Rate: \$15/SF/YR/NNN
- Two Offices, Restroom, 16ft Ceilings
- 2,582 SF space with ample parking
- A perfect location with heavy traffic on Evansville's East side

OFFERING SUMMARY

LEASE RATE: \$15/SF/YR

LEASE TYPE: Triple Net (NNN)

BUILDING SF: 18,760

AVAILABLE SF: 2,582

LOT SIZE: 1.98 Acres

YEAR BUILT: 1999

ZONING: C-2



HAHN KIEFER REAL ESTATE SERVICES

1352 E Division St
Evansville, IN 47711



JOE KIEFER

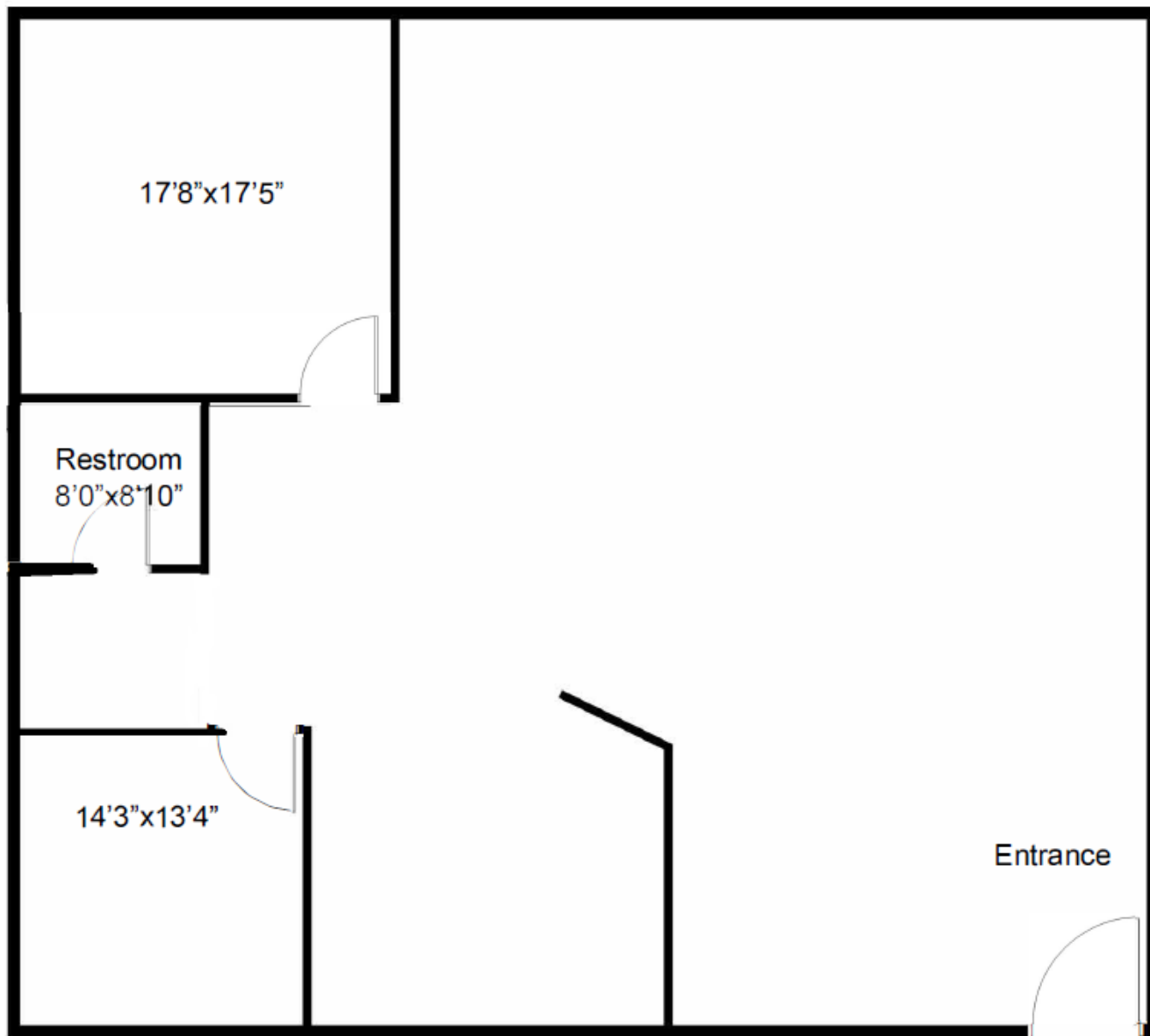
President / Managing Broker
office: (812) 604-5973
cell: 812.604.5973
jkiefer@hahnkiefer.com
License #: RB14037711, Indiana

JOSEY MCLAUGHLIN

Associate Broker
office: (812) 549-9114
cell: (812) 549-9114
jmclaughlin@hahnkiefer.com

FLOOR PLAN

1449 KIMBER LN | EVANSVILLE, IN 47715



FLOOR PLAN

HAHN KIEFER REAL ESTATE SERVICES

1352 E Division St
Evansville, IN 47711



JOE KIEFER

President / Managing Broker
O: (812) 604-5973
C: 812.604.5973
jkiefer@hahnkiefer.com
License #: RB14037711, Indiana

JOSEY MCLAUGHLIN

Associate Broker
O: (812) 549-9114
C: (812) 549-9114
jmclaughlin@hahnkiefer.com