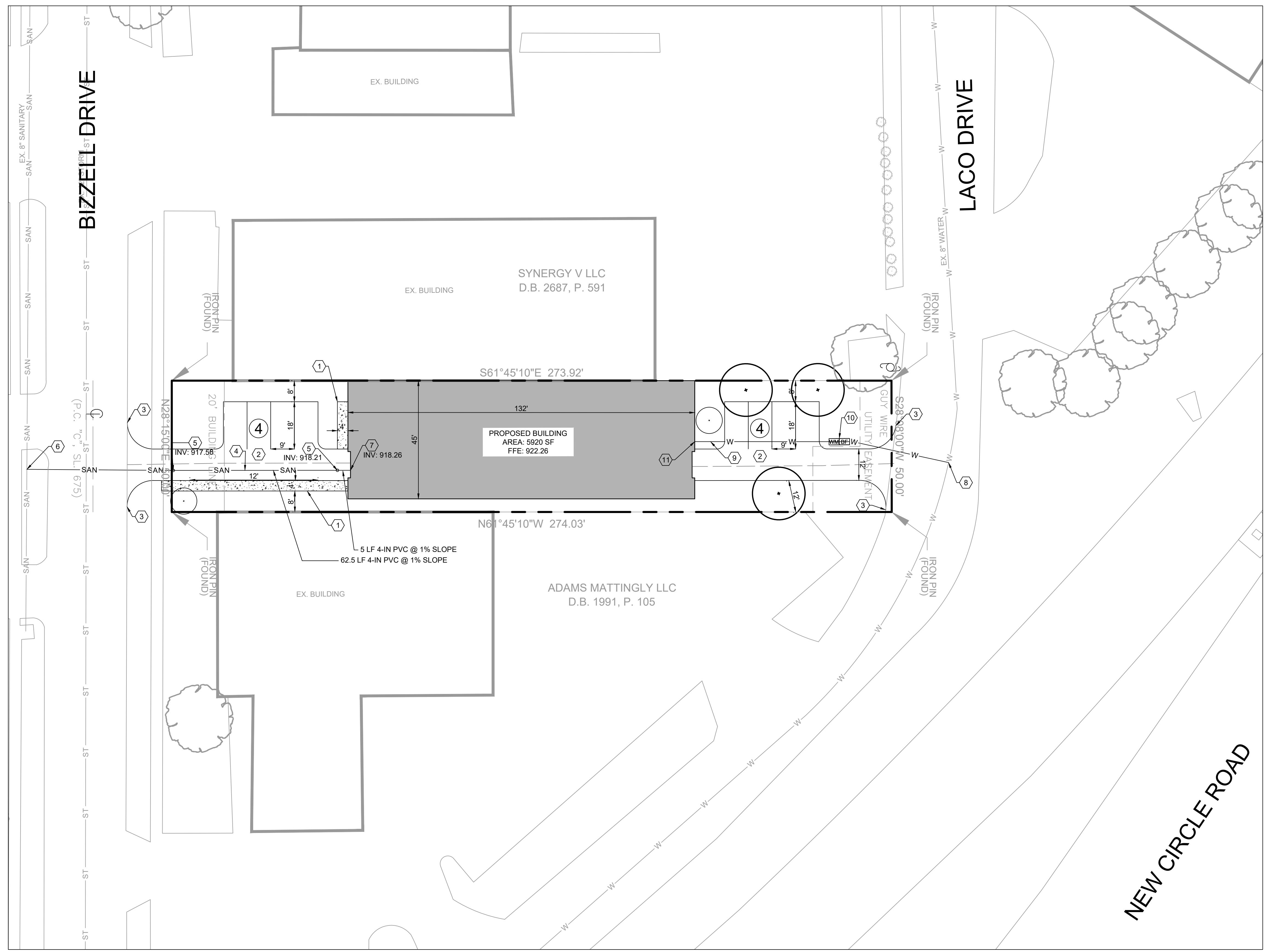


KEY NOTES

1. 4' SIDEWALK. SEE DETAIL SHEET XXX.
2. ASPHALT PAVEMENT. SEE DETAIL SHEET XXX.
3. CONNECT TO EXISTING ROADWAY, MATCH EXISTING GRADE AT TIE-IN. SEE ENTRANCE DETAIL SHEET XXX.
4. 4-INCH SANITARY SEWER LATERAL.
5. SANITARY CLEANOUT. SEE INVERT CALLOUT. SEE DETAIL SHEET XXX.
6. CONNECT SANITARY CLEANOUT TO EXISTING SANITARY SEWER. CONTRACTOR TO VERIFY INVERT OF EXISTING SANITARY SEWER. ADJUST SANITARY SERVICE LATERAL INVERT AS REQUIRED. SEE DETAIL SHEET XXX. CONTRACTOR TO REPAIR EXISTING ROADWAY AS REQUIRED BY LFUCG REGULATIONS.
7. CONNECT SANITARY SERVICE TO BUILDING. COORDINATE FINAL LOCATION WITH INTERIOR PLUMBING PLANS.
8. COORDINATE WITH KENTUCKY AMERICAN WATER FOR SERVICE CONNECTION. CONTRACTOR TO REPAIR EXISTING ROADWAY AS REQUIRED BY LFUCG REGULATIONS.
9. WATER SERVICE LINE.
10. WATER METER AND BACKFLOW PREVENTER.
11. CONNECT WATER SERVICE TO BUILDING. COORDINATE FINAL LOCATION WITH INTERIOR PLUMBING PLANS.

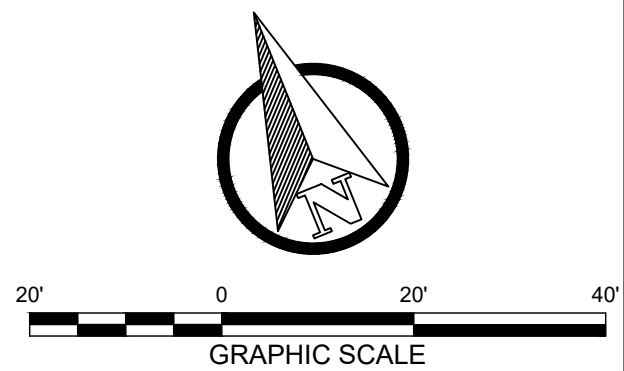


LEGEND

- PROPERTY LINE
- ROADWAY CENTERLINE
- EASEMENT / SETBACK LINE
- PROPOSED BUILDING
- SEWER LINE
- WATER LINE
- SANITARY CLEANOUT
- WATER METER
- BACKFLOW PREVENTER

SITE STATISTICS

PROPERTY AREA: 13,698.78 SF (0.3145 AC)  
 ZONING: I-1 (LIGHT INDUSTRIAL)  
 BUILDING AREA: 5920 SF  
 OPEN SPACE: 4,397 SF (32.1% OF SITE, 10% REQUIRED)  
 TREE CANOPY: 1,400 SF (10.1% OF SITE, 10% REQUIRED)  
 MEDIUM TREES: 3 @ 400 SF/EA  
 SMALL TREES: 2 @ 100 SF/EA



M. CLAY JOHNSON, PE  
 PROFESSIONAL ENGINEER  
 859-519-9750  
 CLAY@MJCIVIL.COM

PROPOSED BUILDING  
 670 BIZZELL DRIVE  
 LEXINGTON, KY 40510

REVISIONS:

NO.	DATE	DESCRIPTION

SHEET TITLE SITE & UTILITY PLAN	DATE
	SHEET NUMBER C6