A modern office interior with a wooden desk, a lamp, and a colorful abstract wall. The wall features large, stylized shapes in shades of orange, blue, and white. The desk is dark wood, and a lamp with a white shade is visible on the left.

Story isn't just another workspace.  
We're a tribe of dreamers and  
doers who refuse ordinary. Our  
members thrive here.

Enjoy the essentials: 24/7 access,  
professional meeting rooms, and  
mail delivery. Stay connected with  
high-speed WiFi and energized  
with Quills coffee and Elixir  
Kombucha.

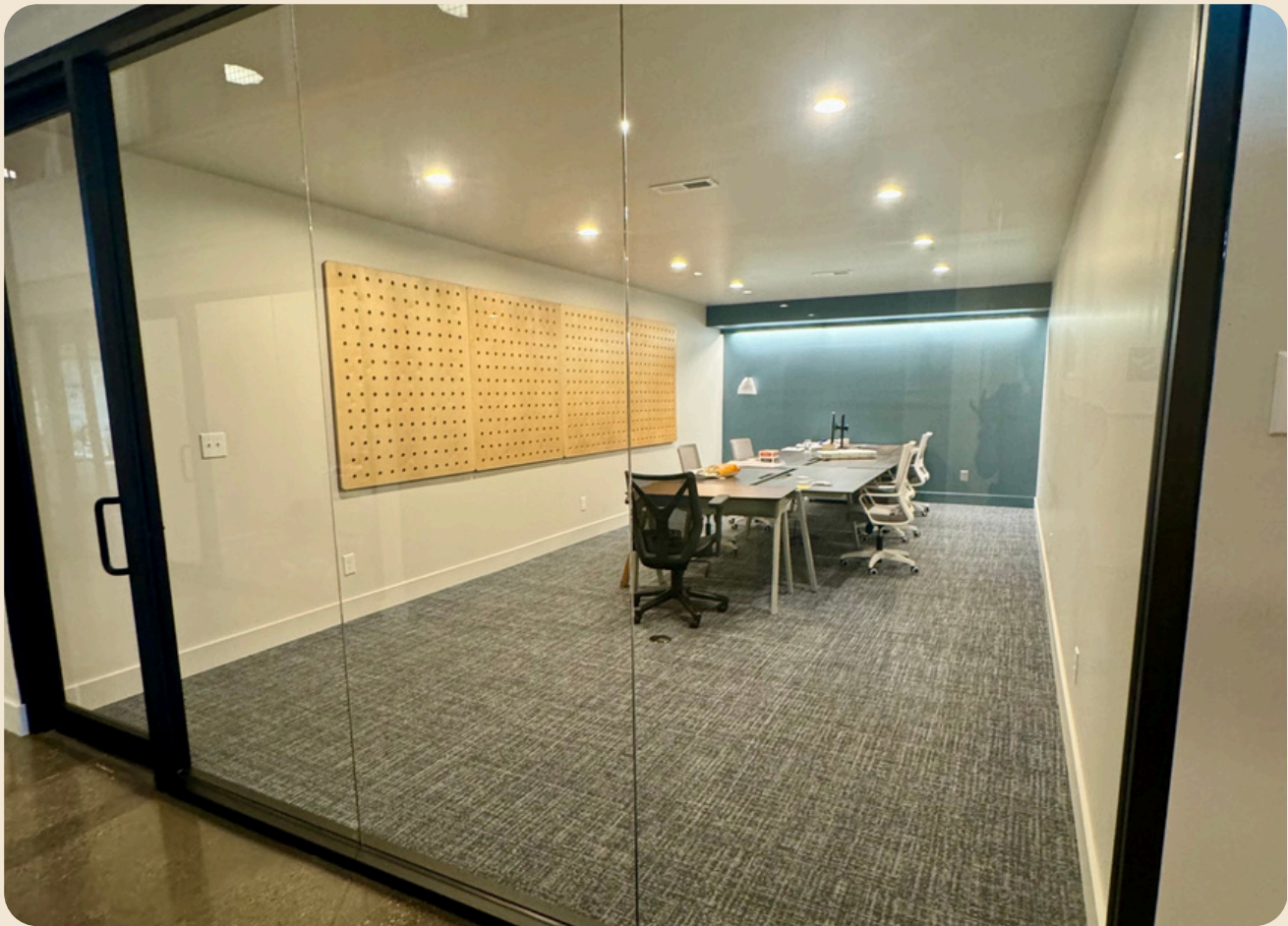
What makes Story different?  
Our people. Neighborhood perks.  
Real connections. A team that  
believes in what you're building.

This is where purpose meets  
possibility.

*Story*

# Story

## OFFICE 103



**\$3500 | 1 YEAR TERM**

- 15 Story Memberships
- 12 Hrs. Booking Credit
- Daily Huddle Room Access
- Professional Mailing Address
- Networking Events & Programs
- Nulu Neighborhood Discounts
- 24/7 Keycard Access
- 375 Sqft

PREMIUM OFFICE SPACES TAILORED TO MEET THE NEEDS OF YOUR GROWING COMPANY



# Story

## OFFICE 104



**\$3500 | 1 YEAR TERM**

- 15 Story Memberships
- 12 Hrs. Booking Credit
- Daily Huddle Room Access
- Professional Mailing Address
- Networking Events & Programs
- Nulu Neighborhood Discounts
- 24/7 Keycard Access
- 375 Sqft

PREMIUM OFFICE SPACES TAILORED TO MEET THE NEEDS OF YOUR GROWING COMPANY

Story

# Story

## OFFICE 203



**\$2500 | 1 YEAR TERM**

- 6 Story Memberships
- 10 Hrs. Booking Credit
- Daily Huddle Room Access
- Professional Mailing Address
- Networking Events & Programs
- Nulu Neighborhood Discounts
- 24/7 Keycard Access
- 345 Sqft

**PREMIUM OFFICE SPACES TAILORED TO MEET THE NEEDS OF YOUR GROWING COMPANY**

Story

# Story

## OFFICE 205



**\$6000 | 1 YEAR TERM**

- 20 Story Memberships
- 15 Hrs. Booking Credit
- Daily Huddle Room Access
- Professional Mailing Address
- Networking Events & Programs
- Nulu Neighborhood Discounts
- 24/7 Keycard Access
- Sqft 645

**PREMIUM OFFICE SPACES TAILORED TO MEET THE NEEDS OF YOUR GROWING COMPANY**

Story