

COMMERCIAL LAND FOR SALE



Greg Leveridge
C: 859.421.8959
O: 859.309.0099
Greg@BALRealEstate.com

155 APRIL WAY
WINCHESTER, KY 40391

Lara Thornbury
C: 859.771.2552
O: 859.309.0099
Lara@BALRealEstate.com



155 APRIL WAY, LOT 1



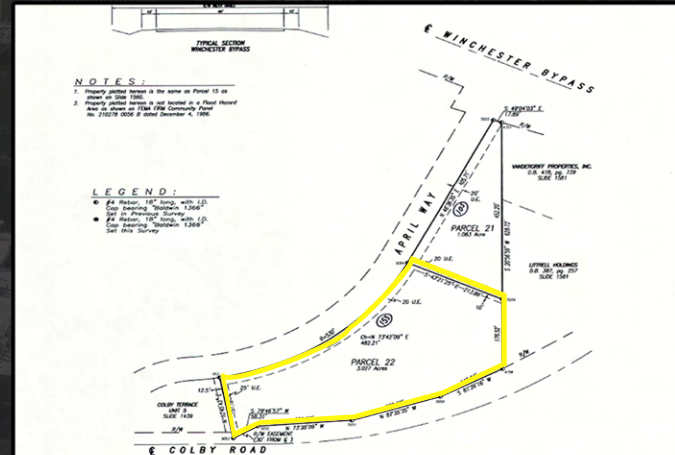
PROPERTY DESCRIPTION:

+/- 3.02 Acres
PD Zoning
\$1,350,000 (\$450K/acre)
500 Linear Feet

3 Acres positioned along April Way and Colby Road, two major connector roads within the City of Winchester. Strategically positioned between commercial traffic and uses along Bypass Road, and high residential density behind.

CONCEPTUAL PLANS: [CLICK HERE](#)

Approved conceptual development plan includes 4 buildings totaling 24,640 SF, 120 parking spaces, and access points at Colby Road and April Way.



155 APRIL WAY, LOT 1

