



# Retail Development For Lease

9615 Newbridge Road  
Louisville, Kentucky

The Bardsbridge Center is a 14,300 SF retail center located in the Fern Creek neighborhood of Louisville, KY. This property is ideally situated with strong demographics and surrounded by other retail, office and hospitality uses.

Accelerating success.

**Desmond Martin**  
Associate  
+1 502 365 3840  
[desmond.martin@colliers.com](mailto:desmond.martin@colliers.com)

Colliers | Louisville  
1757 Frankfort Ave | Suite 102  
Louisville, KY 40206  
+1 502 365 3840



## Property Highlights

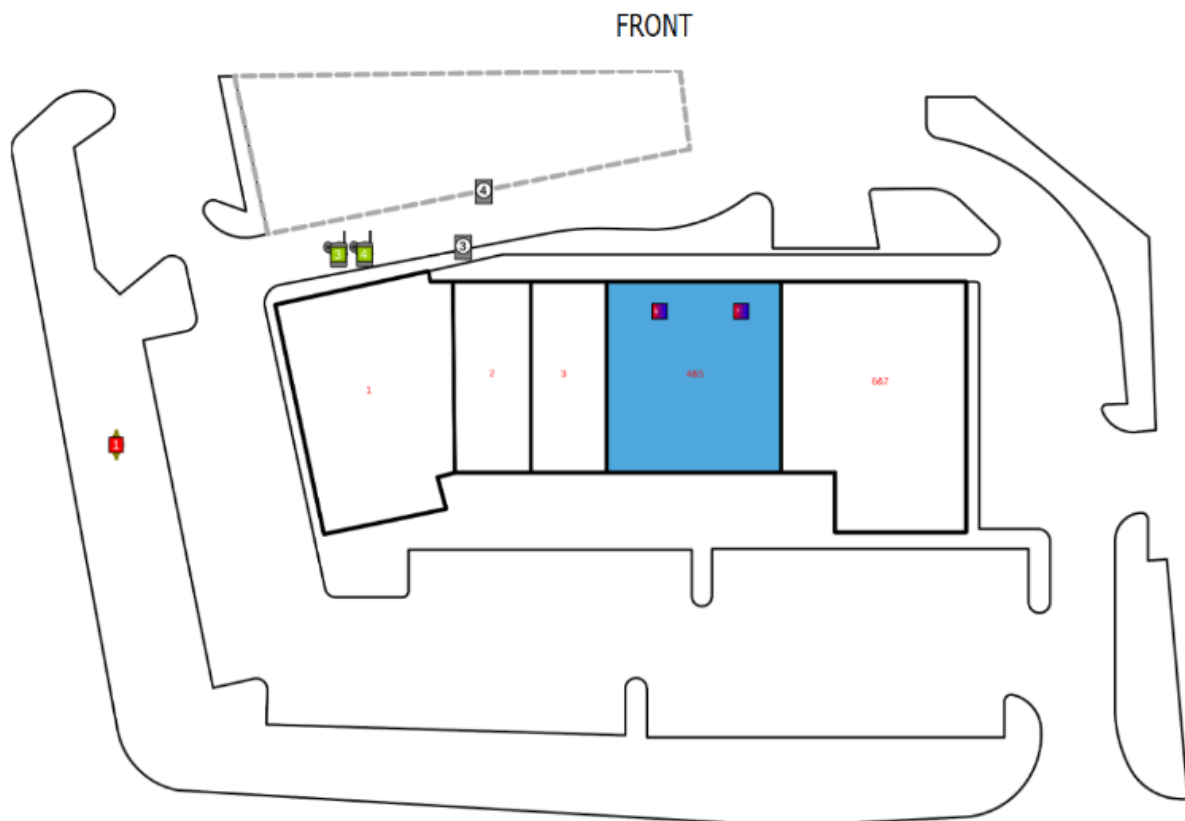
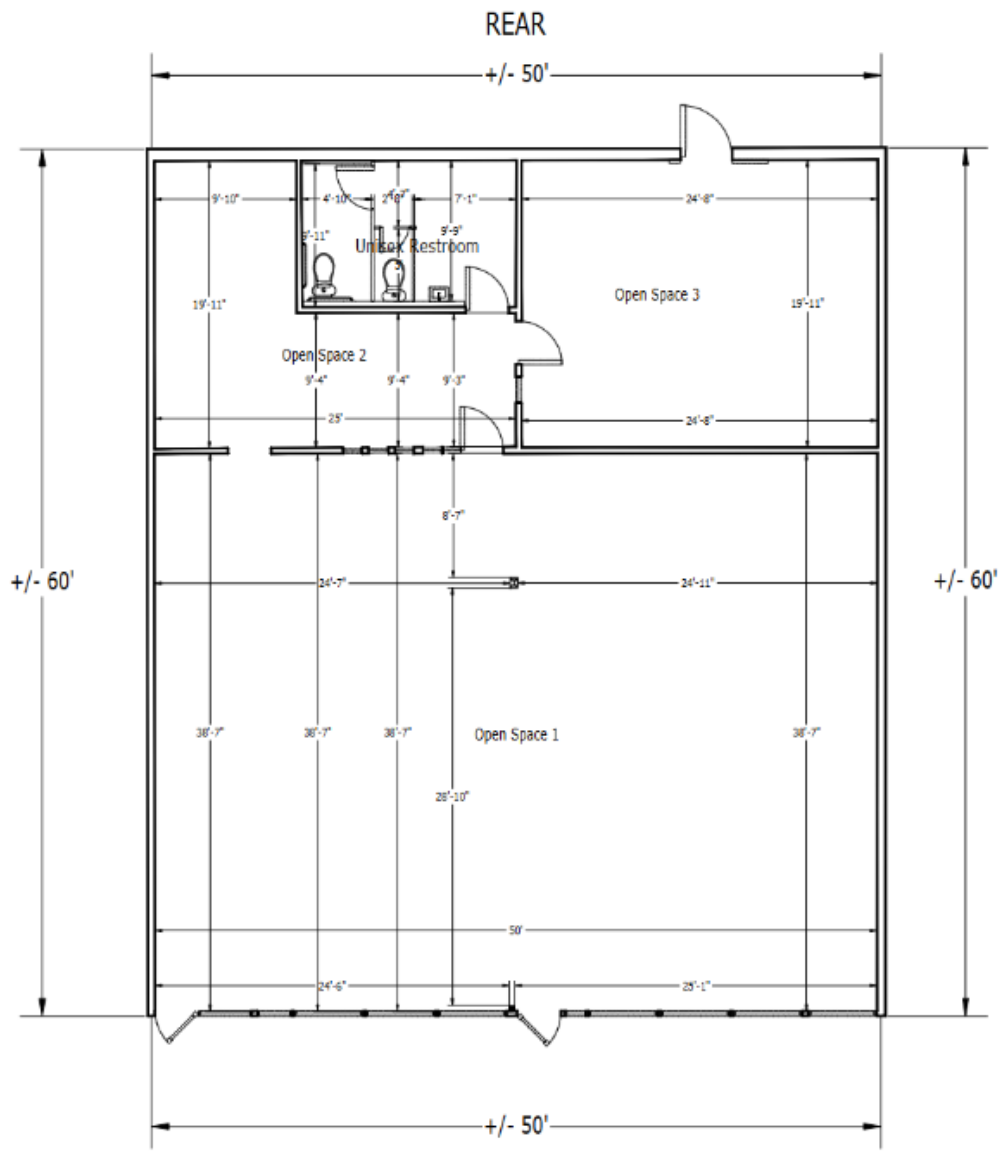
**Lease Rate:** \$15-\$17 PSF (Annual)

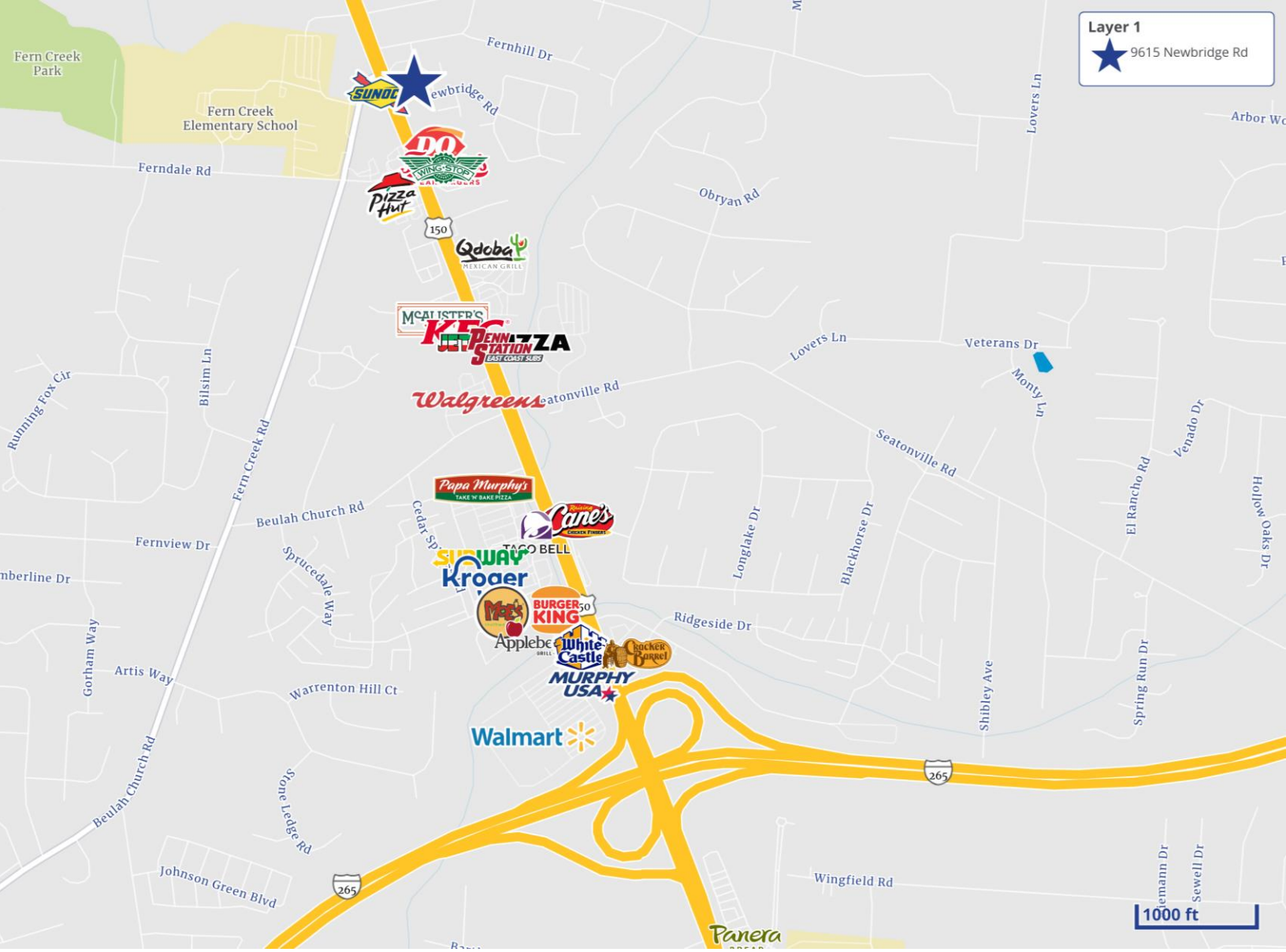
**Total SF of Center:** 14,500

**Available SF:** Approximately 3,000 SF

**Key Features:** Open floor plan, ample parking, easy accessibility off Bardstown Rd, Located in the fast-growing Fern Creek retail corridor







Contact us:

**Robert Scholtz**  
Senior Associate  
+1 502 365 3840  
[Robert.scholtz@colliers.com](mailto:Robert.scholtz@colliers.com)



Colliers | Louisville  
1757 Frankfort Ave | Suite 102  
Louisville, KY 40206  
+1 502 365 3840

View online at [colliers.com/louisville](https://colliers.com/louisville)

This document/email has been prepared by Colliers for advertising and general information only. Colliers makes no guarantees, representations or warranties of any kind, expressed or implied, regarding the information including, but not limited to, warranties of content, accuracy and reliability. Any interested party should undertake their own inquiries as to the accuracy of the information. Colliers excludes unequivocally all inferred or implied terms, conditions and warranties arising out of this document and excludes all liability for loss and damages arising there from. This publication is the copyrighted property of Colliers and /or its licensor(s). © 2026. All rights reserved. This communication is not intended to cause or induce breach of an existing listing agreement.

[Colliers.com/louisville](https://colliers.com/louisville)