

1 GROUND FLOOR PLAN - OVERALL
3/64" = 1'-0"

RRC FLEX PROJECT LLC
371 LOGISTICS AVENUE / JEFFERSONVILLE, IN 47130



2 NORTH-WEST CORNER



3 CORNER ENTRY VIEW

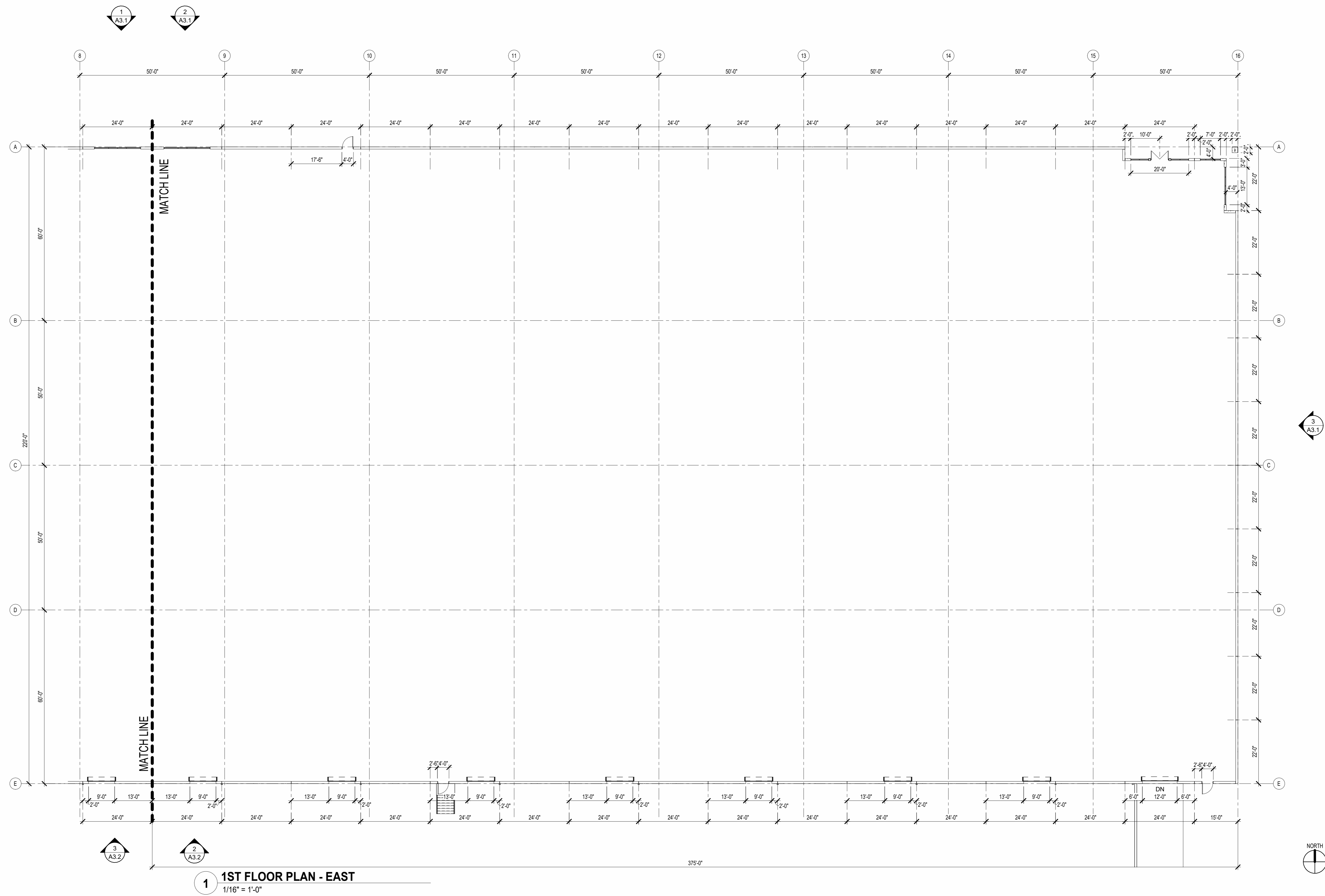
PROJECT TITLE

NOT FOR CONSTRUCTION

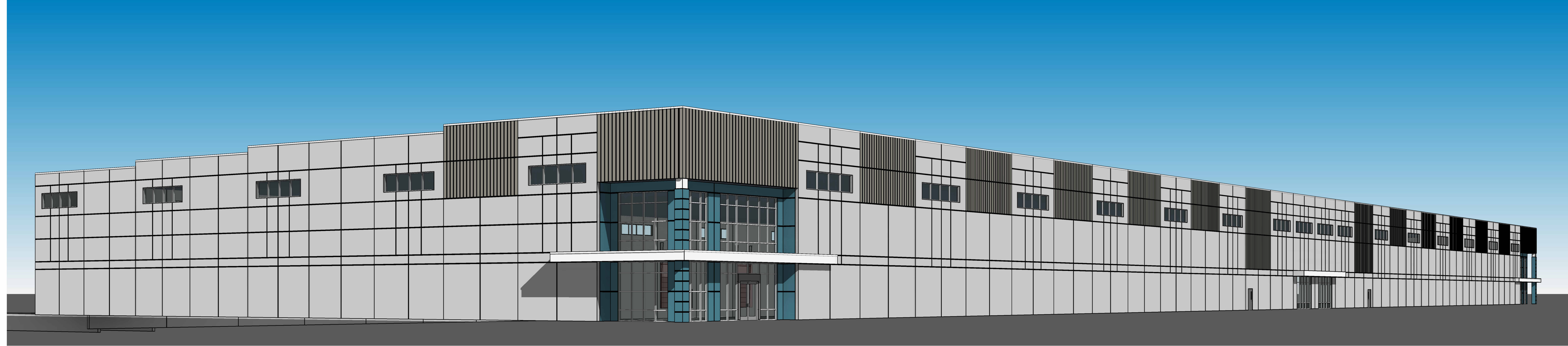
ISSUED FOR:
DATE: 10-2-2025
BY: JTMcd
CHK: TEK
REVISIONS:

GROUND FLOOR PLAN

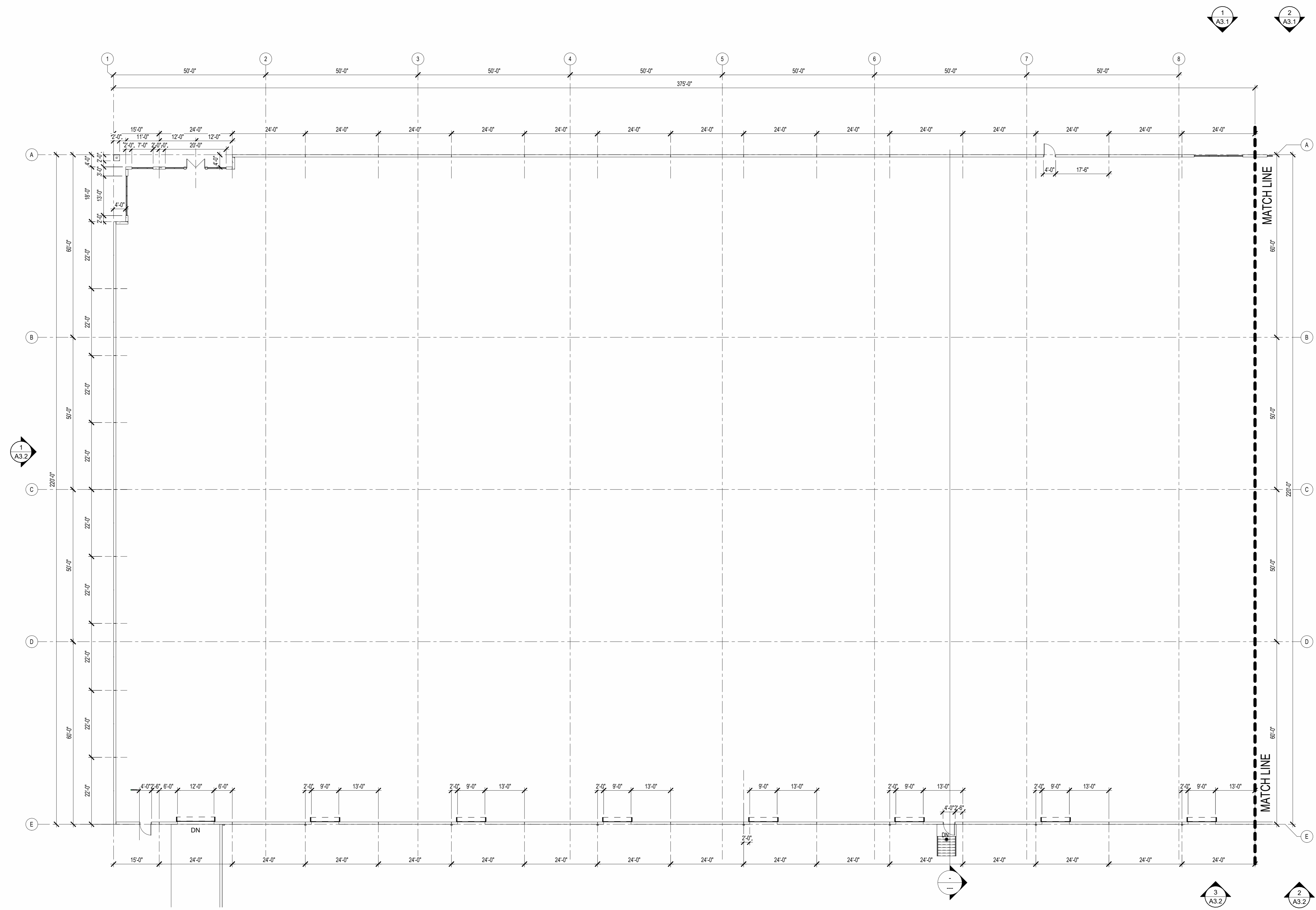
A1.0



1 1ST FLOOR PLAN - EAST
1/16" = 1'-0"



2 NORTH-EAST VIEW 1



1 1ST FLOOR PLAN - WEST
 1/16" = 1'-0"



2 SOUTH-WEST VIEW

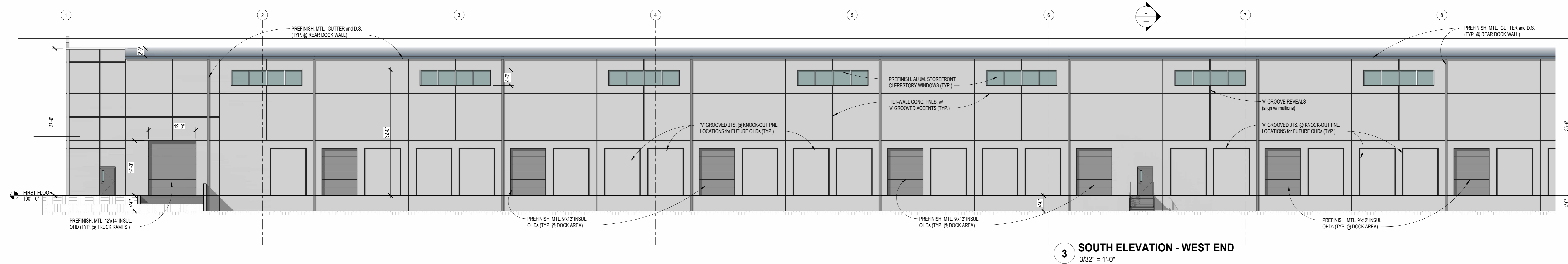
RRC FLEX PROJECT LLC
 371 LOGISTICS AVENUE / JEFFERSONVILLE, IN 47130

PROJECT TITLE

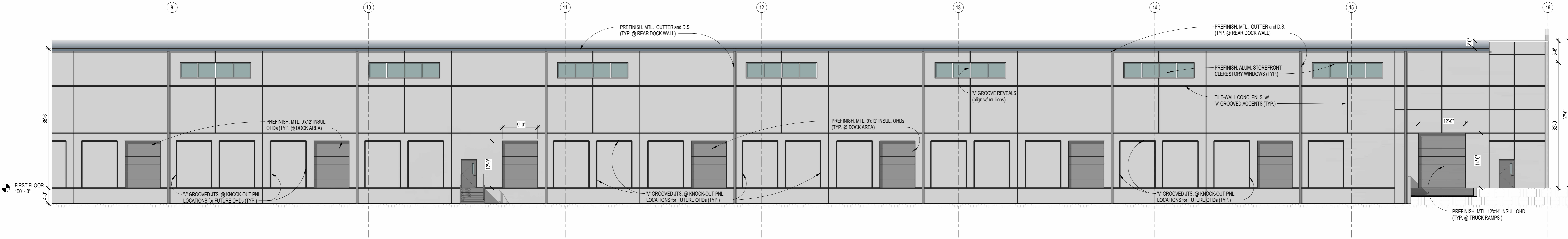
NOT FOR CONSTRUCTION

ISSUED FOR:
 DATE: 10-2-2025
 BY: JTMcD
 CKD: TEK
 REVISIONS:

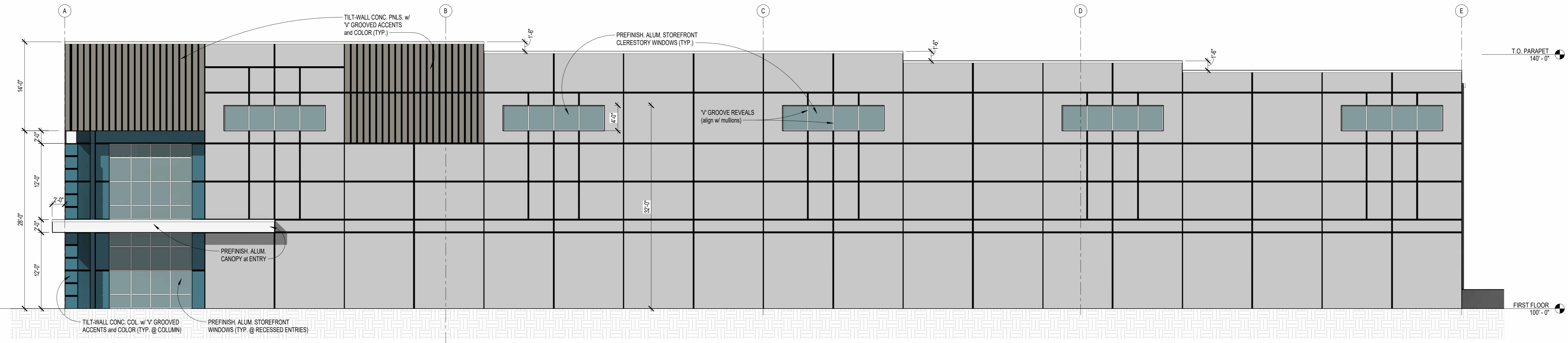
GROUND FLOOR PLAN - WEST



3 SOUTH ELEVATION - WEST END
3/32" = 1'-0"



2 SOUTH ELEVATION - EAST END
3/32" = 1'-0"



1 WEST ELEVATION
1/8" = 1'-0"

RRC FLEX PROJECT LLC
371 LOGISTICS AVENUE / JEFFERSONVILLE, IN 47130

PROJECT TITLE

NOT FOR CONSTRUCTION

ISSUED FOR: _____
 DATE: 10-2-2025
 BY: JTMcd
 CKD: TEK
 REVISIONS: _____

SOUTH ELEVATIONS

A3.2