

AVAILABLE

1803 COMMERCE RD, LOUISVILLE, KY 40208



HIGHLIGHTS

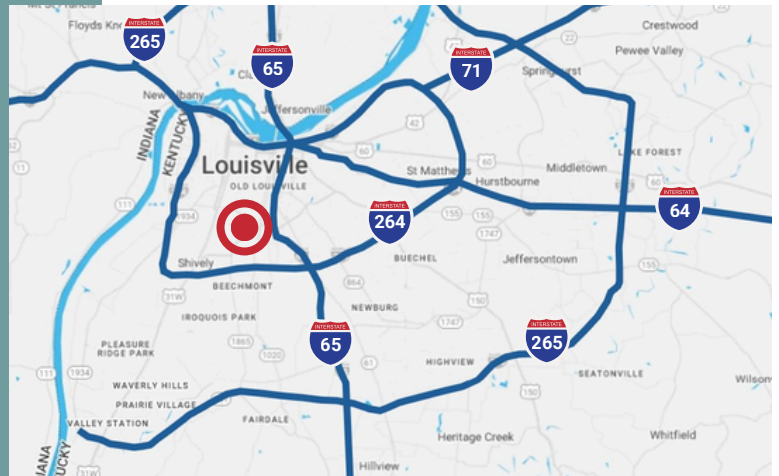
- 4 DOCKS
- 3 DRIVE IN
- 480V 3-PHASE HEAVY POWER
- CEILING HEIGHT 15'-20'
- WET SPRINKLER SYSTEM
- MINUTES TO I-65 & I-264 (WATTERSON EXPRESSWAY)
- 78 PARKING SPOTS

OFFERING SUMMARY

PROPERTY TYPE	INDUSTRIAL
AVAILABLE	48,051 SF
OFFERING	SALE
ZONING	EZ1

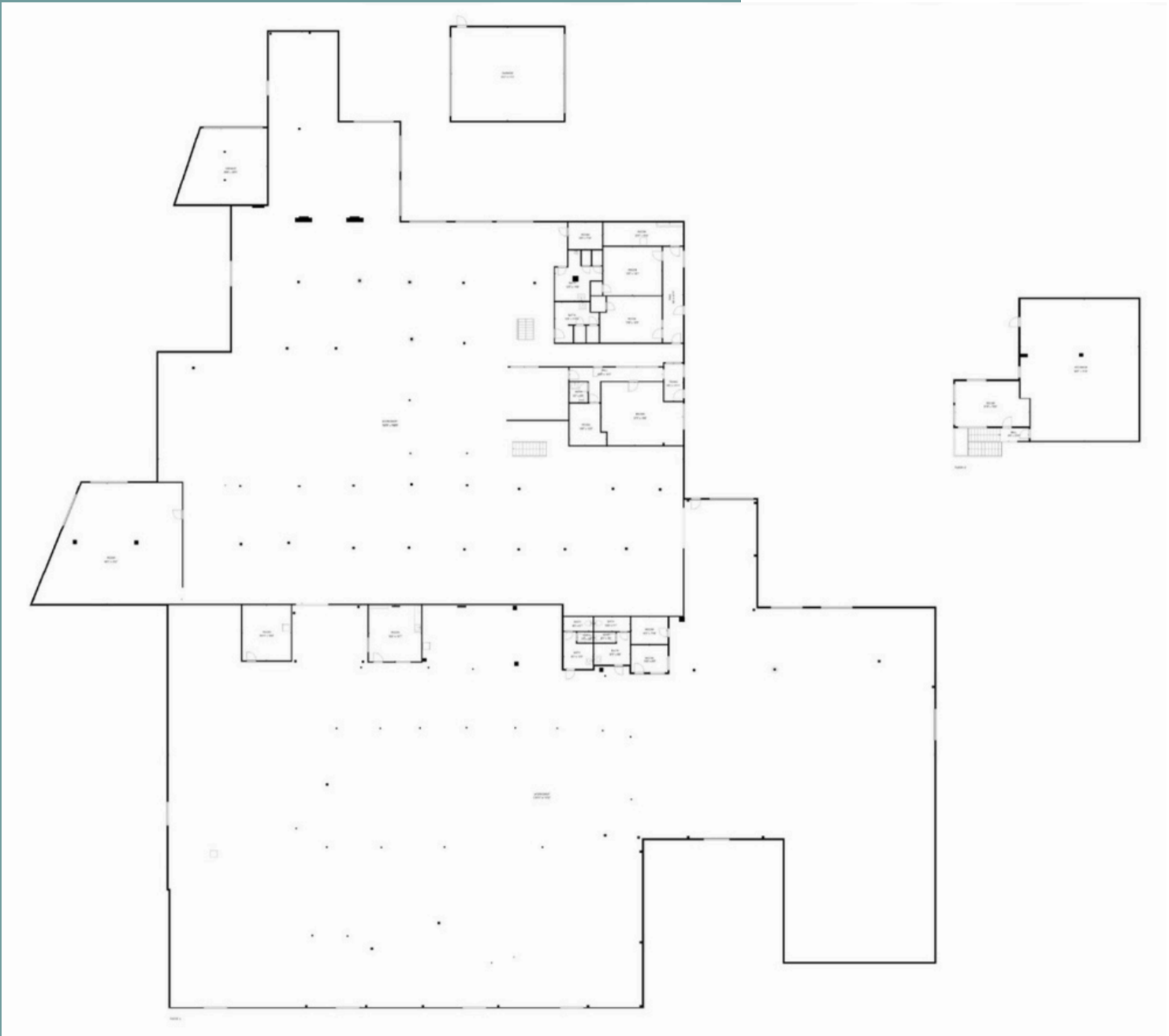
1803 COMMERCE RD,
LOUISVILLE, KY 40208

HORIZON
COMMERCIAL REALTY



HORIZON COMMERCIAL REALTY, LLC
12451 PLANTSIDE DRIVE
LOUISVILLE, KY 40299

1803 COMMERCE RD,
LOUISVILLE, KY 40208



Nathan Mosley
nmosley@hcrky.com
502.550.1194