

FOR SALE

COMMERCIAL DEVELOPMENT LAND

Dan's
DISCOUNT
Jewelry & Pawn

R
REX-KOL

ZAXBY'S

BIG CITY



DUNKIN'

OUTBACK
STEAKHOUSE

Stock
Yards
Bank & Trust
SINCE 1904



Eastern Bypass

Commercial Drive



932 COMMERCIAL DR.

RICHMOND, KY 40475

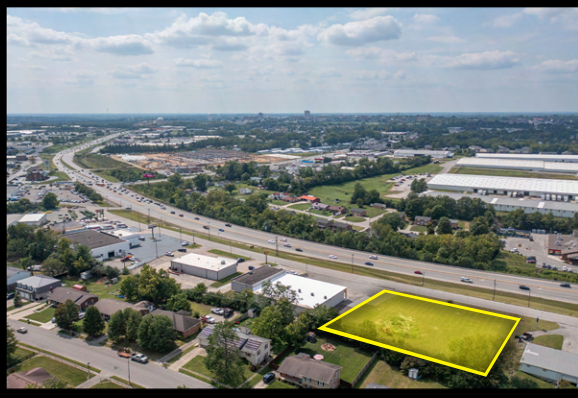


GREG LEVERIDGE
859.421.8959
greg@balrealestate.com



01: EXECUTIVE SUMMARY

932 COMMERCIAL DR.



PROPERTY DESCRIPTION

932 Commercial Drive is 0.9 acres of development opportunity with terrific visibility from Commercial Drive and the Eastern Bypass. Situated for retail, office, or flex end-users.

Ideally located in the heart of Richmond's Bypass corridor, near Highway 52 with surrounding high-density retail and residential.

PROPERTY HIGHLIGHTS

- Elevated site with great visibility
- High-density area off the Eastern Bypass
- Close proximity to Highway 52/Bypass major intersection



0.9 ACRES



**\$675,000
OWNER-USER**

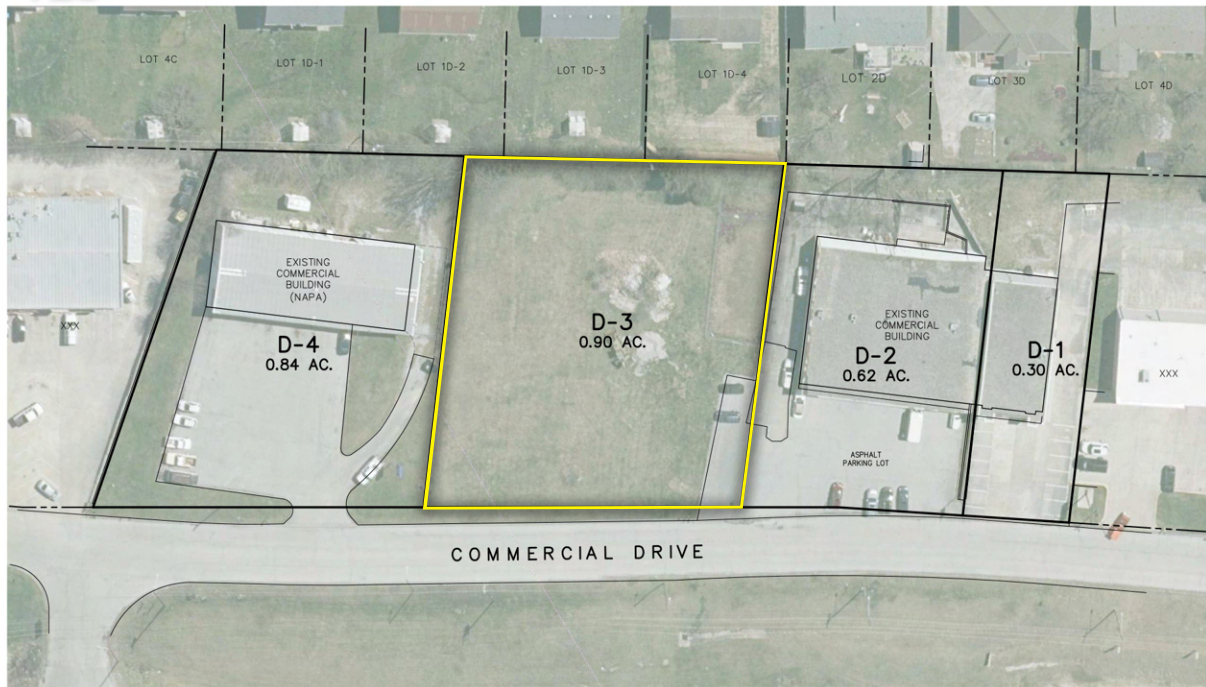


**ZONED
COMMERCIAL**

02: PROPERTY OVERVIEW

932 COMMERCIAL DR.

PLAT



03: LOCATION INSIGHTS

SURROUNDING AMENITIES
932 COMMERCIAL DR.

