

350 TIERNEY WAY WINCHESTER, KY 40391



PROPERTY FEATURES

- ⇒ 19,800 SF
- ⇒ Building Dimensions: 165' X 120'
- ⇒ 20'10" Clear Height
- ⇒ 2 Docks w/ Levelers
- ⇒ 2 Drive-In Doors (16'x16')
- ⇒ Fully Climate Controlled Warehouse
- ⇒ 450 SF Office
- ⇒ 1 Mile From I-64
- ⇒ Available May/June 2026
- ⇒ **LEASE RATE: \$7.50/SF NNN**



CONTACT US

Brian Erwin, SIOR, CCIM

859-492-5416

berwin@thegibsoncompany.com

bluegrasscre.com



BLUEGRASS
COMMERCIAL REAL ESTATE

This drawing is conceptual only and for the convenience of reference. It should not be relied upon as representation express or implied, of the final size, location or dimensions of any lot or building area. The developer expressly reserves the right to make any modifications, revisions, and changes it

350 TIERNEY WAY WINCHESTER, KY 40391



PICTURES



bluegrasscre.com



BLUEGRASS
COMMERCIAL REAL ESTATE

This drawing is conceptual only and for the convenience of reference. It should not be relied upon as representation express or implied, of the final size, location or dimensions of any lot or building area. The developer expressly reserves the right to make any modifications, revisions, and changes it

350 TIERNEY WAY WINCHESTER, KY 40391



bluegrasscre.com



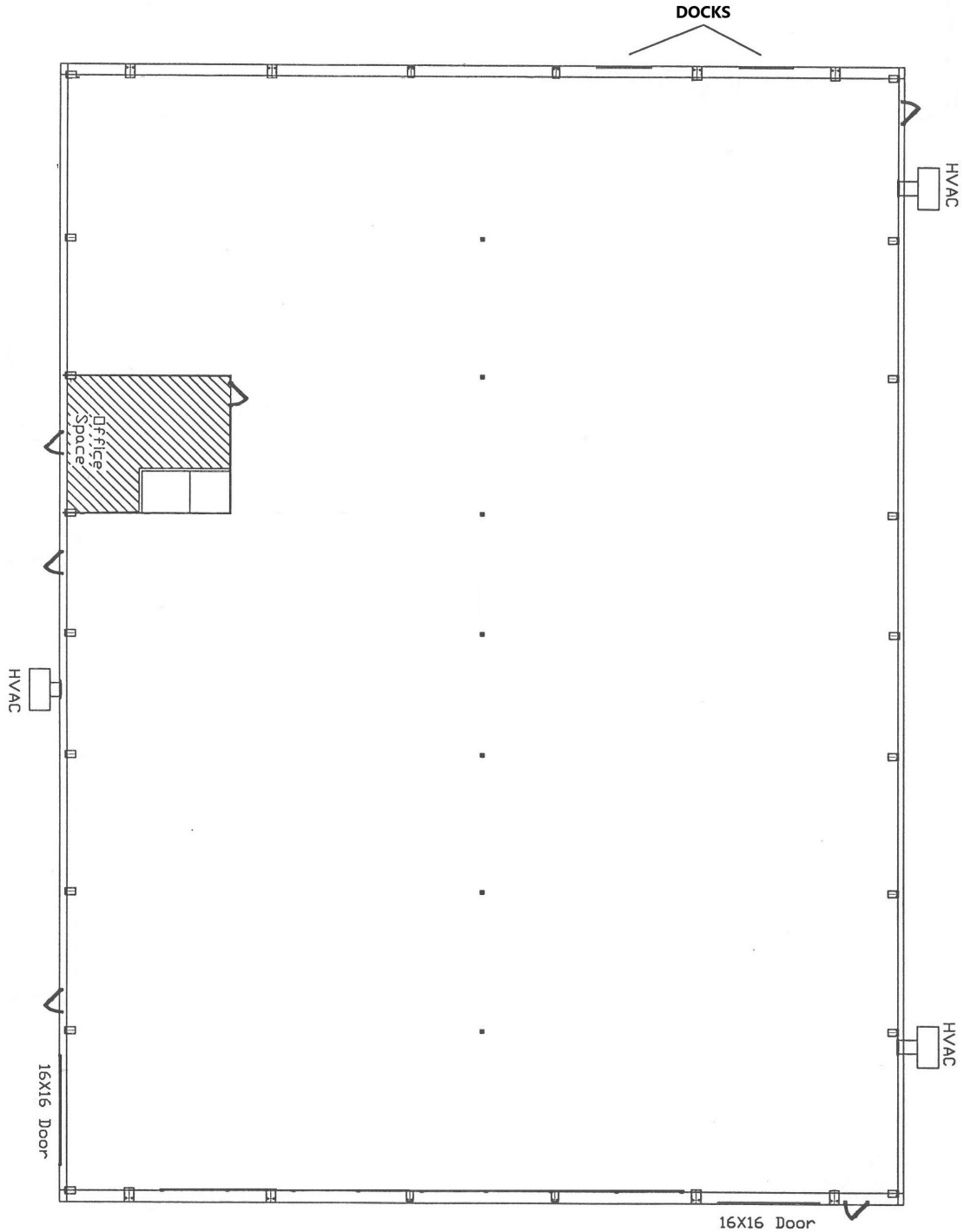
BLUEGRASS
COMMERCIAL REAL ESTATE

This drawing is conceptual only and for the convenience of reference. It should not be relied upon as representation express or implied, of the final size, location or dimensions of any lot or building area. The developer expressly reserves the right to make any modifications, revisions, and changes it

350 TIERNEY WAY WINCHESTER, KY 40391



FLOORPLAN



bluegrasscre.com



BLUEGRASS
COMMERCIAL REAL ESTATE

This drawing is conceptual only and for the convenience of reference. It should not be relied upon as representation express or implied, of the final size, location or dimensions of any lot or building area. The developer expressly reserves the right to make any modifications, revisions, and changes it