



FREESTANDING BUILDING FOR LEASE

4529 GREENWOOD ROAD | LOUISVILLE, KY 40258

22,630 SF



WILL DUNCAN

502.905.3107 | wduncan@duncancre.com

This information has been obtained from reliable sources. Broker has no reason to doubt its accuracy but it may contain errors or omissions. Broker makes no representation, warranties or guarantees with respect to this information and Buyer should review all of it.

PROPERTY INFORMATION
4529 GREENWOOD ROAD

Property Description:

Spanning 3.57 acres, this free standing retail site has a spacious parking lot and a clear span interior featuring two restrooms, a kitchen, and multiple storage rooms. It is ideal for a range of retail uses such as automotive sales, auto service, flea market, or event center. This versatile space offers exceptional potential for businesses seeking a prominent and high traffic area in Louisville.



Sale Price:	\$6.00 PSF
Property Size:	22,630 SF
Property Type:	Retail
Zoning:	C-2
Lease Type:	NNN
Lease Term:	5 Years
Year Renovated:	2020
Nearest Highway:	Dixie Highway
Signage:	Yes
Parking Type:	Surface
County:	Jefferson



**9 MIN DRIVE
TO I-264**



**NEW LONGHORN GOING
IN ACROSS THE STREET**

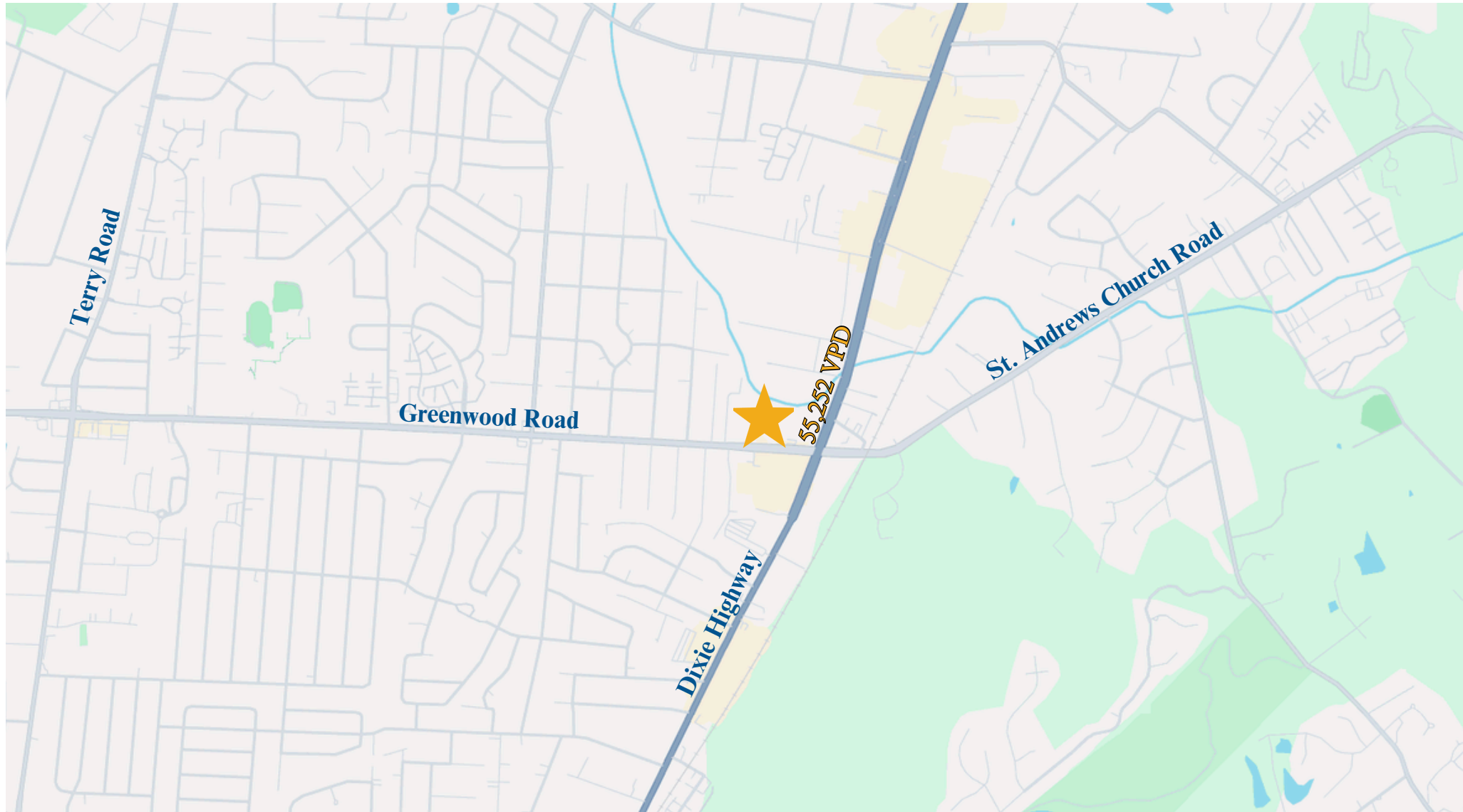


150 Thierman Lane
Louisville, KY 40207
O: 502.292.5464
www.duncancre.com

WILL DUNCAN
502.905.3107
wduncan@duncancre.com

LOCATION

4529 GREENWOOD ROAD



150 Thierman Lane
Louisville, KY 40207
O: 502.292.5464
www.duncancre.com

WILL DUNCAN
502.905.3107
wduncan@duncancre.com

NEARBY RETAIL 4529 GREENWOOD ROAD

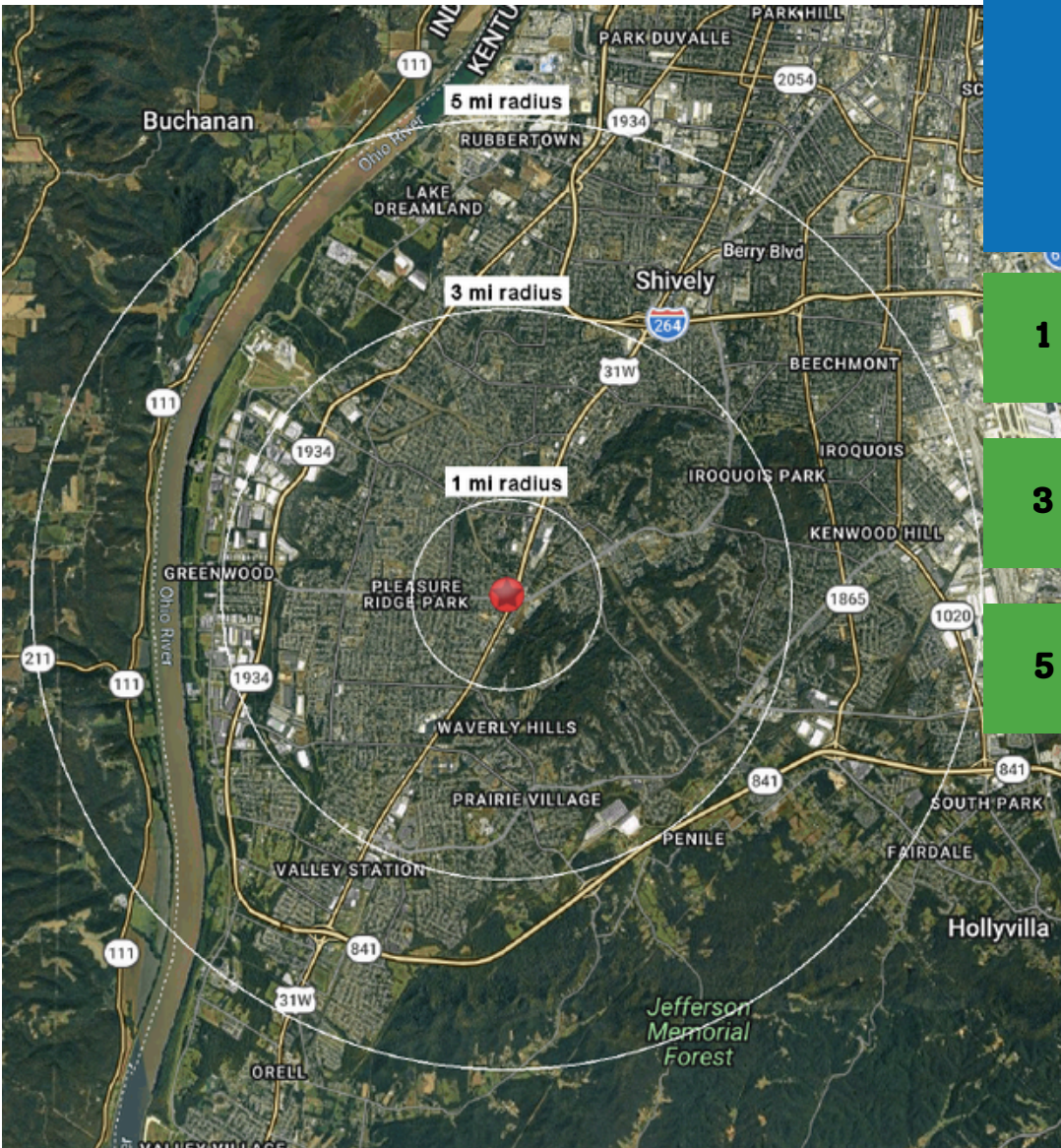






ADDITIONAL PICTURES
4529 GREENWOOD ROAD



DEMOGRAPHICS

4529 GREENWOOD ROAD



	 Total Population	 Total Families	 Total Households	 Average Household Income
1 MILE	8,241	2,198	3,409	\$61,712
3 MILE	73,896	19,742	29,944	\$67,053
5 MILE	161,295	43,665	64,731	\$60,286

*INFORMATION IS SOURCED FROM SITES USA



**96.1%
EMPLOYMENT RATE
(WITHIN 5 MILES)**



**20.4% HAVE A
COLLEGE DEGREE
(WITHIN 5 MILES)**



150 Thierman Lane
Louisville, KY 40207
O: 502.292.5464
www.duncancre.com

WILL DUNCAN
502.905.3107
wduncan@duncancre.com