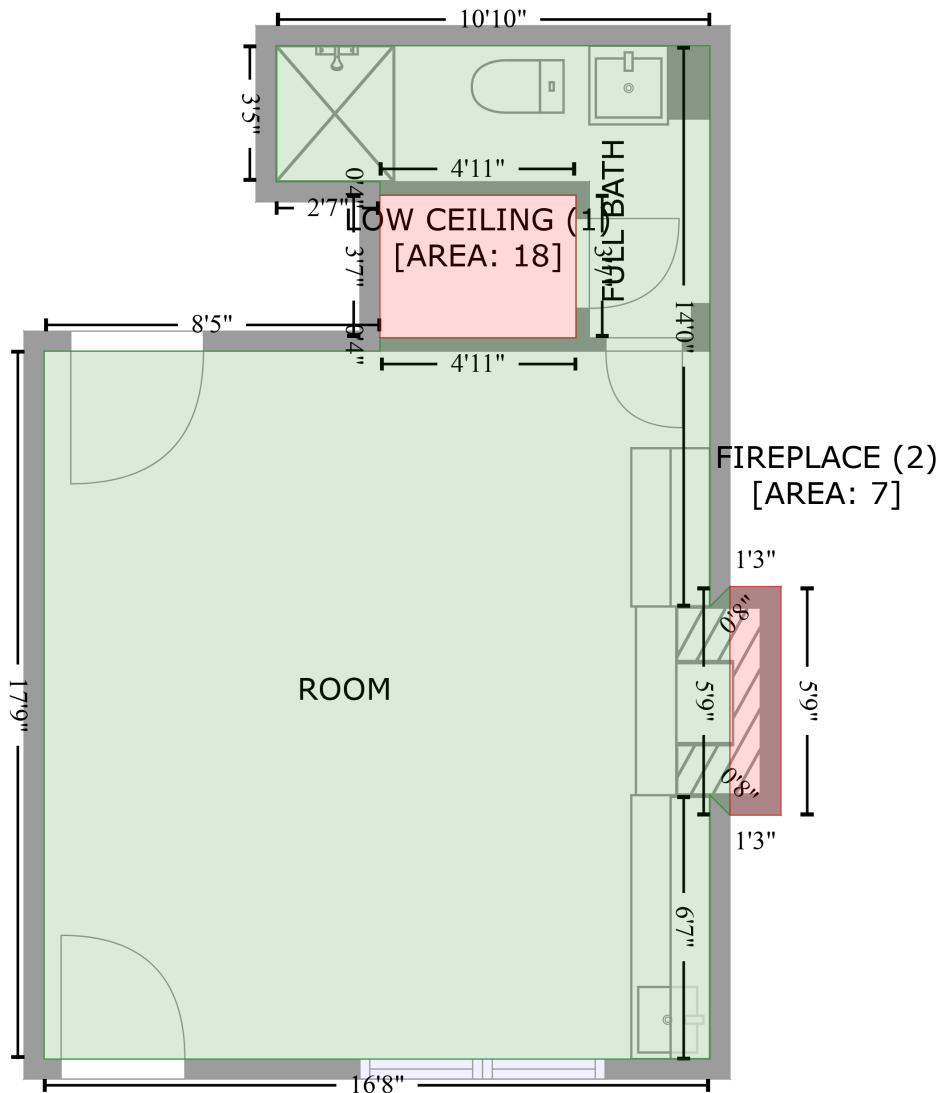


902 East Jefferson Street, Phoenix Hill, Louisville, Jefferson County, Kentucky, United States, 40206, unit A

Gross Living Area: 352 sq. ft

FLOOR 1
[AREA: 352]



Space	Area (sq. ft)	Calculation <small>Coordinate Polygon Area Algorithm using inches</small>
FLOOR 1 (Living area)	352	$ \begin{aligned} & -((299.2 + 299.2) * (47.2 - 215.7) + (299.2 + 305.2) * (215.7 - 209.7) + (305.2 + 305.2) * (209.7 - \\ & 278.3) + (305.2 + 299.2) * (278.3 - 272.3) + (299.2 + 299.2) * (272.3 - 351.6) + (299.2 + 99.2) * \\ & (351.6 - 351.6) + (99.2 + 99.2) * (351.6 - 139) + (99.2 + 200.1) * (139 - 139) + (200.1 + 200.1) * \\ & (139 - 135) + (200.1 + 259) * (135 - 135) + (259 + 259) * (135 - 92.1) + (259 + 200.1) * (92.1 - \\ & 92.1) + (200.1 + 200.1) * (92.1 - 88.1) + (200.1 + 168.9) * (88.1 - 88.1) + (168.9 + 168.9) * (88.1 - \\ & 47.2) + (168.9 + 299.2) * (47.2 - 47.2)) * 0.5 * 0.00694 \end{aligned} $

902 East Jefferson Street, Phoenix Hill, Louisville, Jefferson County, Kentucky, United States, 40206, unit A

Gross Living Area: 352 sq. ft

Space	Area (sq. ft)	Calculation <small>Coordinate Polygon Area Algorithm using inches</small>
LOW CEILING (Non-living area)	18	$-((259 + 259) * (92.1 - 135) + (259 + 200.1) * (135 - 135) + (200.1 + 200.1) * (135 - 92.1) + (200.1 + 259) * (92.1 - 92.1)) * 0.5 * 0.00694$
FIREPLACE (Non-living area)	7	$-((320.6 + 320.6) * (209.7 - 278.3) + (320.6 + 305.2) * (278.3 - 278.3) + (305.2 + 305.2) * (278.3 - 209.7) + (305.2 + 320.6) * (209.7 - 209.7)) * 0.5 * 0.00694$