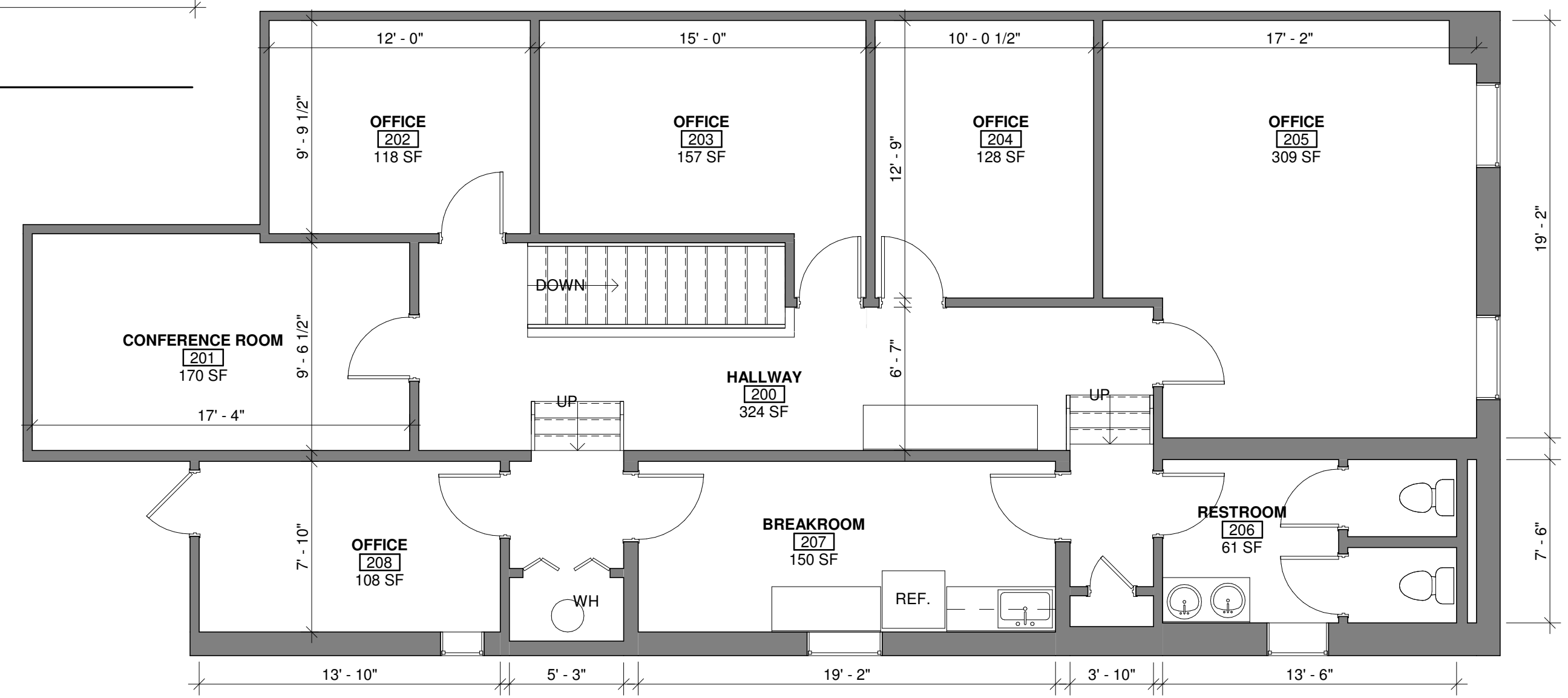
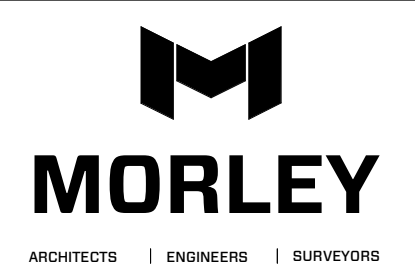


1 First Floor
3/16" = 1'-0"



2 Second Floor
3/16" = 1'-0"



All ideas, designs, calculations, and arrangements indicated or represented by this drawing are owned by and are the property of Morley and Associates, Inc. and were created as instruments of service for use on and in connection with the specified project. Morley and Associates retains all common law, statutory law and other rights, including copyright. No drawings or electronic files shall be reused for any purpose other than the project. They shall not be disclosed to or be used by any other person or firm without the written prior consent of Morley and Associates, Inc.

Written dimensions on these drawings shall have precedence over scale dimensions. Contractors shall verify and be responsible for all dimensions and conditions on the job and Morley and Associates, Inc. must be notified of any variations from the dimensions and conditions shown by these drawings.

If differences exist between electronic files and the signed and sealed hard copy drawings, the hard copy shall govern.

4500 Rosebud Ln., Newburgh, NY 12550
812-464-9585 www.morleycorp.com

501 NW 4th Street

Architectural
As-Built
First Floor Plan,
Second Floor Plan

No.	By	Date
Revisions		
Scale: As Noted		
Designed By:	Job Number: 10942.4.001	
Drawn By: PW	Date: 09.26.2019	
Filename: 10942 - 501 NW 4th Street		
Sheet Number:		

A101