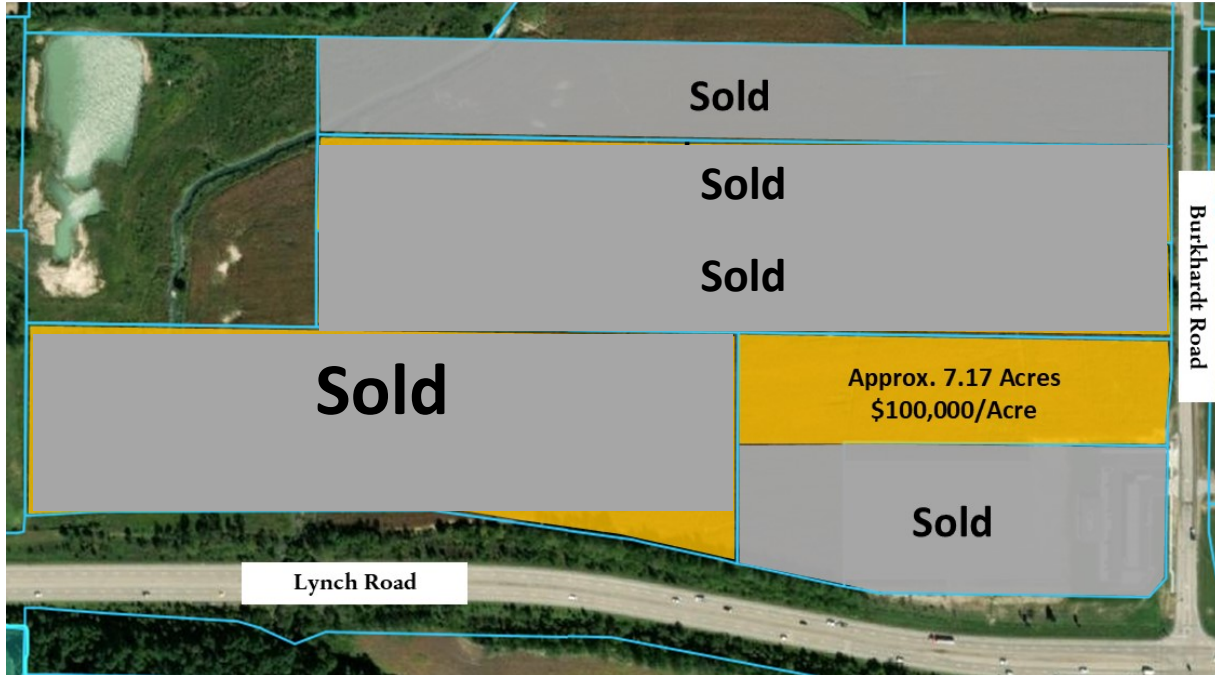


Lynch Road Lots
N Burkhardt Road
Evansville, IN 47715



7.17 Acres Land Available



PROPERTY HIGHLIGHTS

- o Population Density: 4,475 (1 Mile) 24,429 (3 Mile) 82,381 (5 Mile)
- o Intersection of Lynch Road and North Burkhardt Road
- o Traffic counts of 14,350 cars per day at Lynch Road and Interstate 69

SALE INFORMATION

- o Size: 7.17 Acres
- o Sale Price: \$100,000/ Acre
- o Zoning: Residential District (R-1)
- o Available Immediately



For more information, contact:
Joe Kiefer, Managing Broker
Hahn Kiefer Real Estate Services
jkiefer@hahnkiefer.com
(O) 812-477-6980
(C) 812-604-5973
www.HahnKiefer.com

This information was obtained from sources we consider reliable. We cannot be responsible however, for errors, omissions, prior sales or leases, withdrawal from the market or change in price.