

Wright Tower Broker Incentive

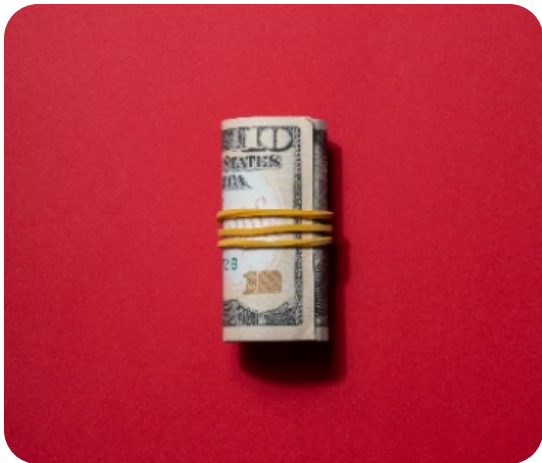
6100 Dutchman's Lane, Louisville, KY 40205

Dear Associates,

I hope this email finds you well.

We are excited to announce a special broker incentive at Wright Tower, designed to reward you for your valuable partnership.

It is indeed the "Wright" time to take advantage of our enhanced commission structure, which offers 1.5% above the market norm.



Incentive Details:

Commission Rate: **5.5%**

Eligibility: **Any new lease, any size, any term**

Deadline: Fully executed leases must be completed by **December 31, 2024**

Please remember to register your clients in advance of their visit to Wright Tower or any contact they may have with our firm.

We look forward to collaborating with you and making this opportunity mutually beneficial. If you have any questions or need further assistance, please feel free to reach out.

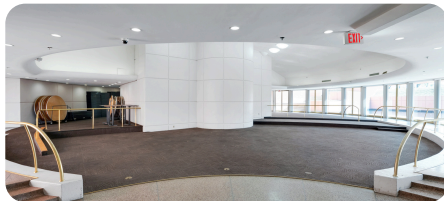
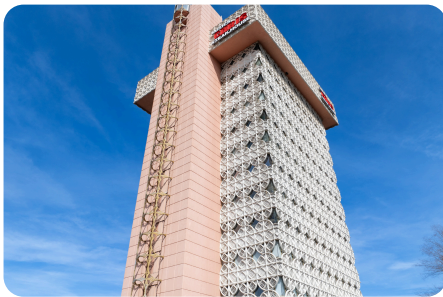
Take a look at the beautiful Wright Tower, and view our available suites.

[View Brochure](#)

[View Listing](#)

Available Suites

Floor - Suite	Available SF	Rent (SF/Yr)
5th Floor - #500	4,513	\$18.00
8th Floor - #800	3,969	\$18.00
11th Floor - #1100	3,463	\$18.00
12th Floor	3,169	\$18.00
14th Floor	6,629	\$18.00



Please feel free to reach out to any of our team.

NAIFortis Group

(502) 583-4040

Mark Wardlaw
CCIM, SIOR
 mwardlaw@naifortis.com

Clay F. Manley, III
SIOR
 cmanley@naifortis.com