

# 901 E. Pont des Mouton

## 901 E Pont Des Mouton Rd Lafayette, LA 70507

### PROPERTY SUMMARY



### Property Description

- Rear Yard: 0.28 acres
- Side Yard: 0.15 acres
- Front Yard: 0.57 acres
- 2 Doors: 12'x14'
- Clear span building with LED lights

### Property Highlights

### Offering Summary

Lease Rate:	\$5,000.00 per month (NNN)
Available SF:	11,250 SF
Lot Size:	107,593 SF
Building Size:	11,250 SF

Demographics	0.3 Miles	0.5 Miles	1 Mile
Total Households	323	663	1,720
Total Population	749	1,550	4,200
Average HH Income	\$68,325	\$68,767	\$69,792

**Mamie Hightower**  
337.789.3802  
mhightower@beaubox.com

**Monty Warren, SIOR**  
337.233.1488  
mwarren@beaubox.com

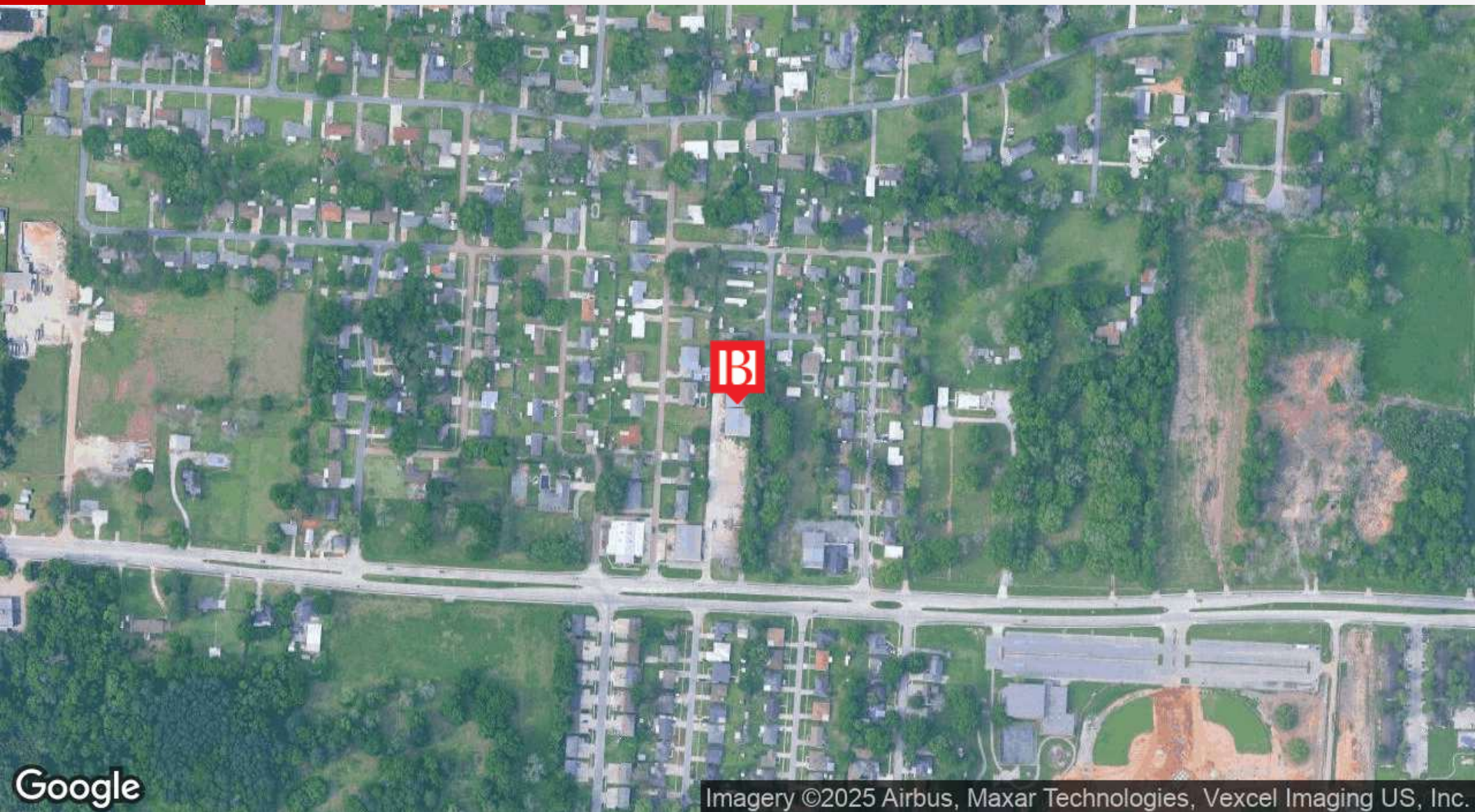
Broker of Record, Beau J. Box; Licensed by the Louisiana Real Estate Commission, Mississippi Real Estate Commission, Alabama Real Estate Commission and Florida Real Estate Commission, USA. This information has been secured from sources we believe to be reliable, but we make no representations or warranties, expressed or implied, as to the accuracy of the information. References to square footage or age are approximate. Buyer must verify the information and bears all risk for any inaccuracies. © Beau Box Commercial Real Estate. 5500 Bankers Avenue, Baton Rouge, LA 70808 | 225-237-3343. | July 31, 2025





**901 E. Pont des Mouton**  
901 E Pont Des Mouton Rd Lafayette, LA 70507

LOCATION MAP



**Mamie Hightower**

337.789.3802

[mhightower@beaibox.com](mailto:mhightower@beaibox.com)

**Monty Warren, SIOR**

337.233.1488

[mwarren@beaibox.com](mailto:mwarren@beaibox.com)

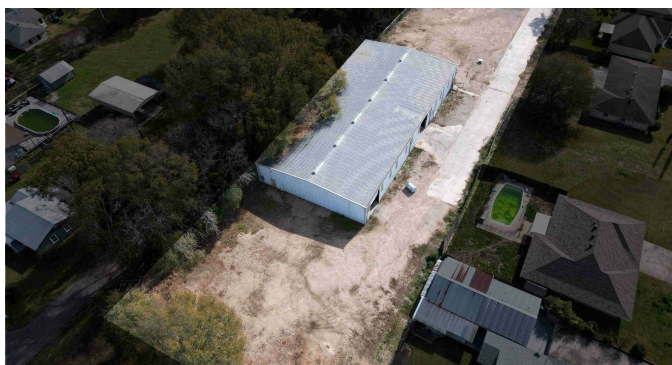
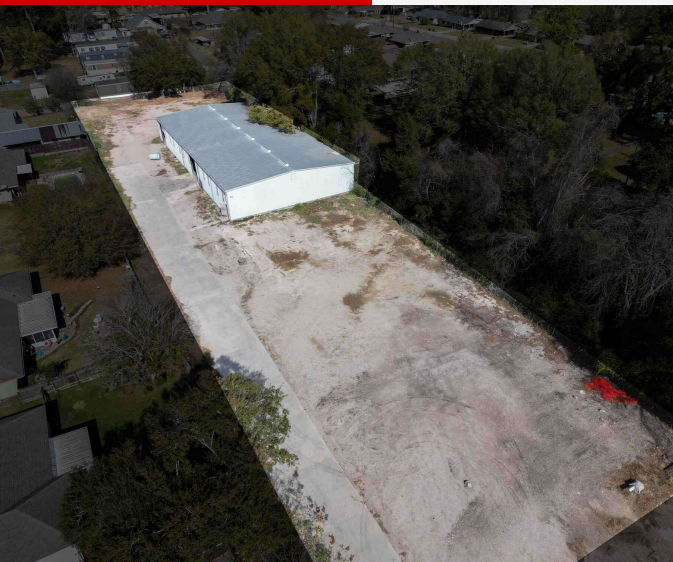
Broker of Record, Beau J. Box; Licensed by the Louisiana Real Estate Commission, Mississippi Real Estate Commission, Alabama Real Estate Commission and Florida Real Estate Commission, USA. This information has been secured from sources we believe to be reliable, but we make no representations or warranties, expressed or implied, as to the accuracy of the information. References to square footage or age are approximate. Buyer must verify the information and bears all risk for any inaccuracies. © Beau Box Commercial Real Estate. 5500 Bankers Avenue, Baton Rouge, LA 70808 | 225-237-3343. | July 31, 2025





**901 E. Pont des Mouton**  
**901 E Pont Des Mouton Rd Lafayette, LA 70507**

**ADDITIONAL PHOTOS**



**Mamie Hightower**

337.789.3802

[mhightower@beaubox.com](mailto:mhightower@beaubox.com)

**Monty Warren, SIOR**

337.233.1488

[mwarren@beaubox.com](mailto:mwarren@beaubox.com)

Broker of Record, Beau J. Box; Licensed by the Louisiana Real Estate Commission, Mississippi Real Estate Commission, Alabama Real Estate Commission and Florida Real Estate Commission, USA. This information has been secured from sources we believe to be reliable, but we make no representations or warranties, expressed or implied, as to the accuracy of the information. References to square footage or age are approximate. Buyer must verify the information and bears all risk for any inaccuracies. © Beau Box Commercial Real Estate. 5500 Bankers Avenue, Baton Rouge, LA 70808 | 225-237-3343. | July 31, 2025





# 901 E. Pont des Mouton

## 901 E Pont Des Mouton Rd Lafayette, LA 70507

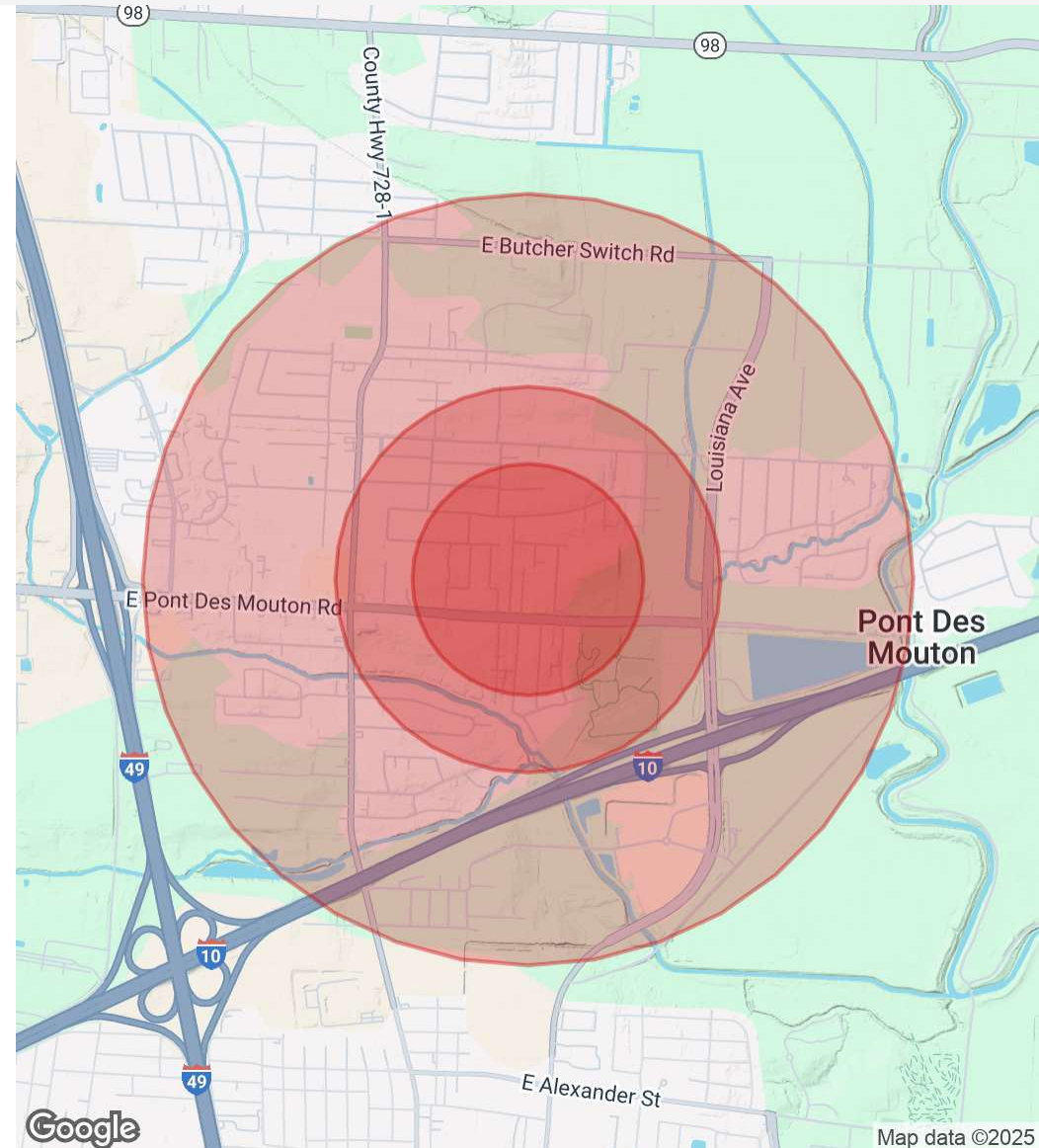
### DEMOGRAPHICS MAP & REPORT

Population	0.3 Miles	0.5 Miles	1 Mile
Total Population	749	1,550	4,200
Average Age	41	42	42
Average Age (Male)	40	40	41
Average Age (Female)	43	43	44

Households & Income	0.3 Miles	0.5 Miles	1 Mile
Total Households	323	663	1,720
# Of Persons Per HH	2.3	2.3	2.4
Average HH Income	\$68,325	\$68,767	\$69,792
Average House Value	\$204,219	\$203,057	\$199,644

Demographics data derived from AlphaMap



**Mamie Hightower**  
337.789.3802  
mhightower@beaubox.com

**Monty Warren, SIOR**  
337.233.1488  
mwarren@beaubox.com

Broker of Record, Beau J. Box; Licensed by the Louisiana Real Estate Commission, Mississippi Real Estate Commission, Alabama Real Estate Commission and Florida Real Estate Commission, USA. This information has been secured from sources we believe to be reliable, but we make no representations or warranties, expressed or implied, as to the accuracy of the information. References to square footage or age are approximate. Buyer must verify the information and bears all risk for any inaccuracies. © Beau Box Commercial Real Estate. 5500 Bankers Avenue, Baton Rouge, LA 70808 | 225-237-3343. | July 31, 2025

