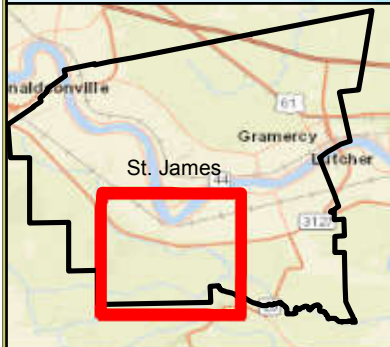
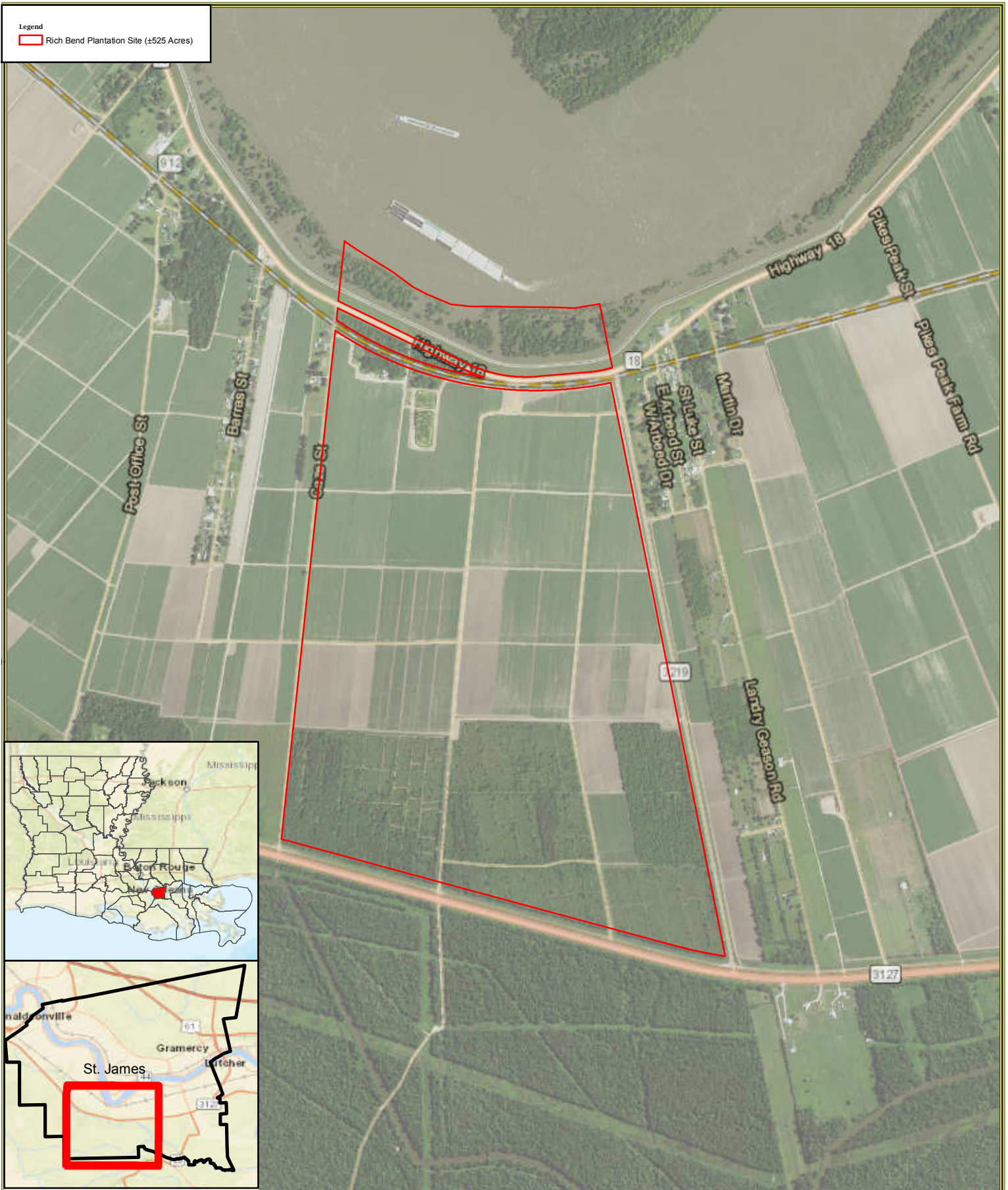



Legend
Rich Bend Plantation Site (±525 Acres)



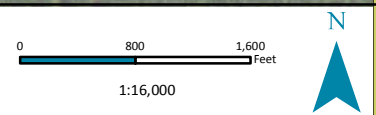
 **HEADWATERS** INC.
NATURAL RESOURCES CONSULTING
WWW.HEADWATERS-INC.COM

Date Created: 6/2/2020	Created by: JDL
------------------------	-----------------

Rich Bend Plantation Site

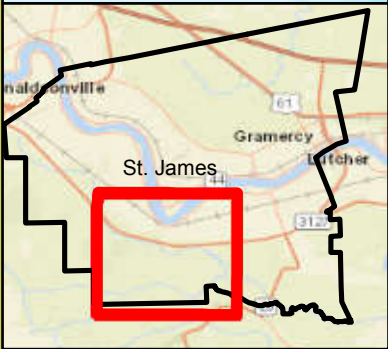
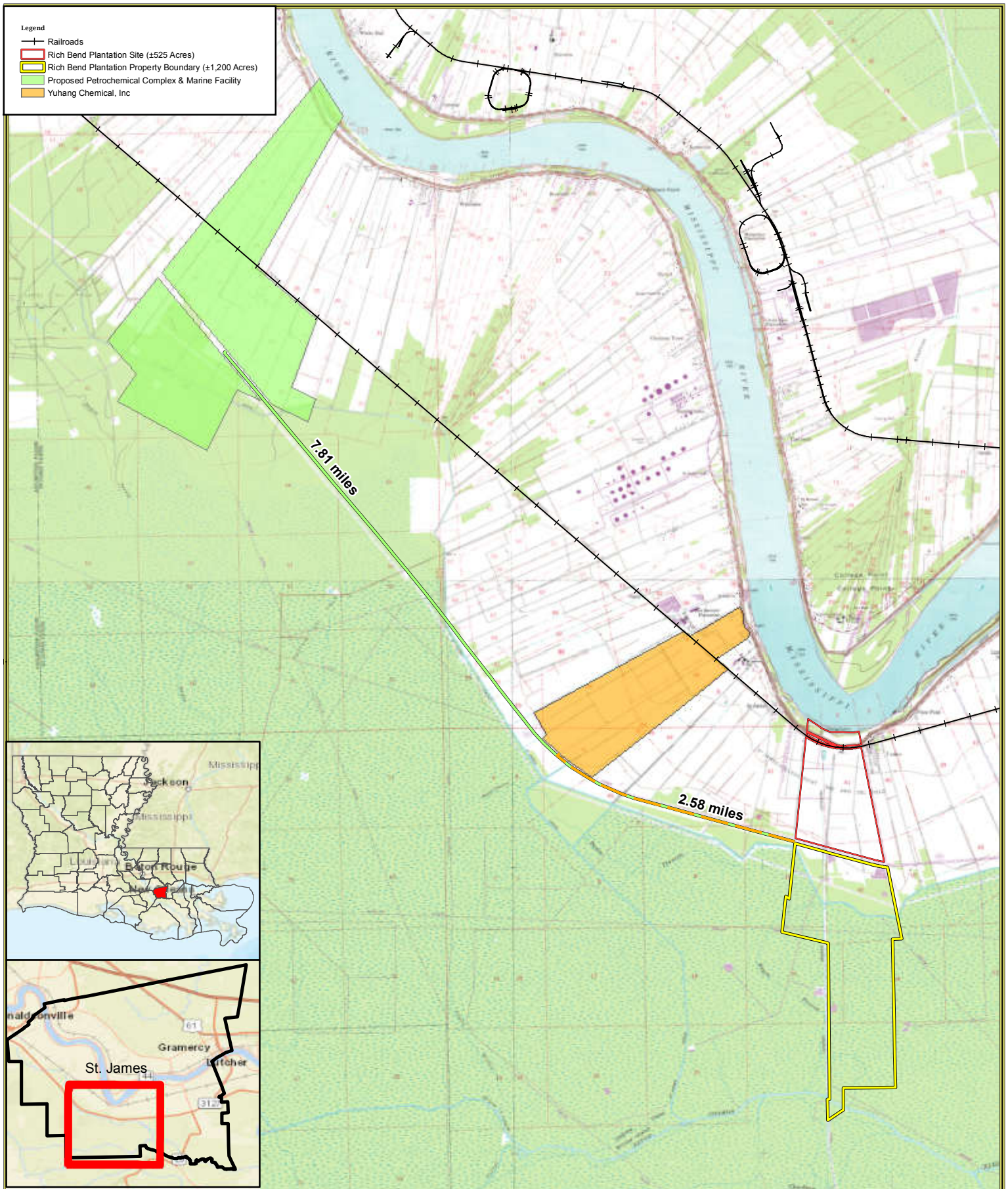
Sec. 41 - T 13S - R 16E
St. James Parish, Louisiana

[Site Location Map](#)



NAD 1983 StatePlane Louisiana South FIPS 1702 Feet

USDA NAIP 2019 Imagery Basemap



HEADWATERS INC.
NATURAL RESOURCES CONSULTING
WWW.HEADWATERS-INC.COM

Date Created: 6/2/2020 Created by: JDL

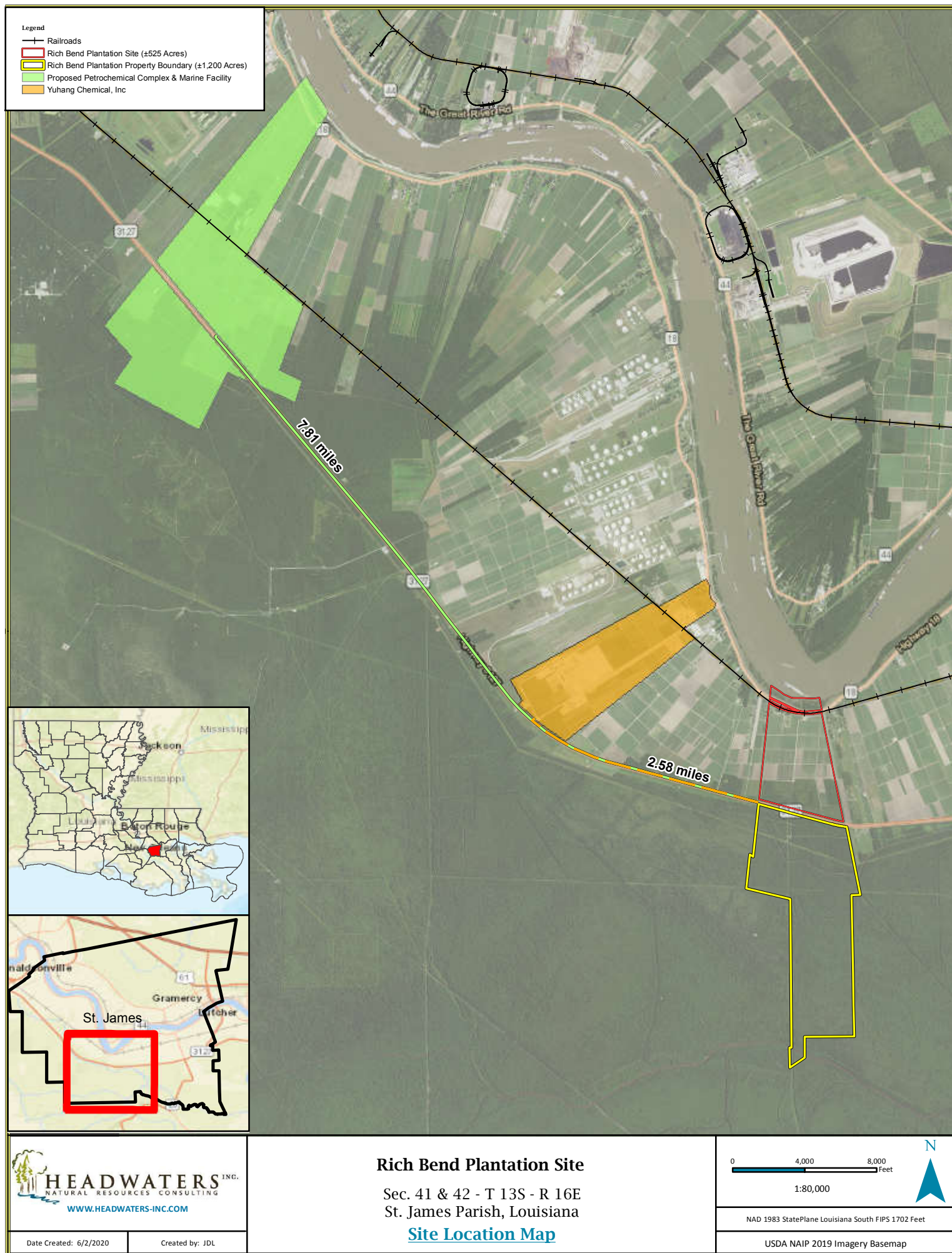
Rich Bend Plantation Site
Sec. 41 & 42 - T 13S - R 16E
St. James Parish, Louisiana
Site Location Map

0 4,000 8,000 Feet
1:80,000

NAD 1983 StatePlane Louisiana South FIPS 1702 Feet

USGS Lagan (LA) Quad Basemap

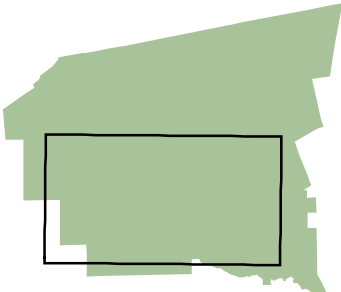
N



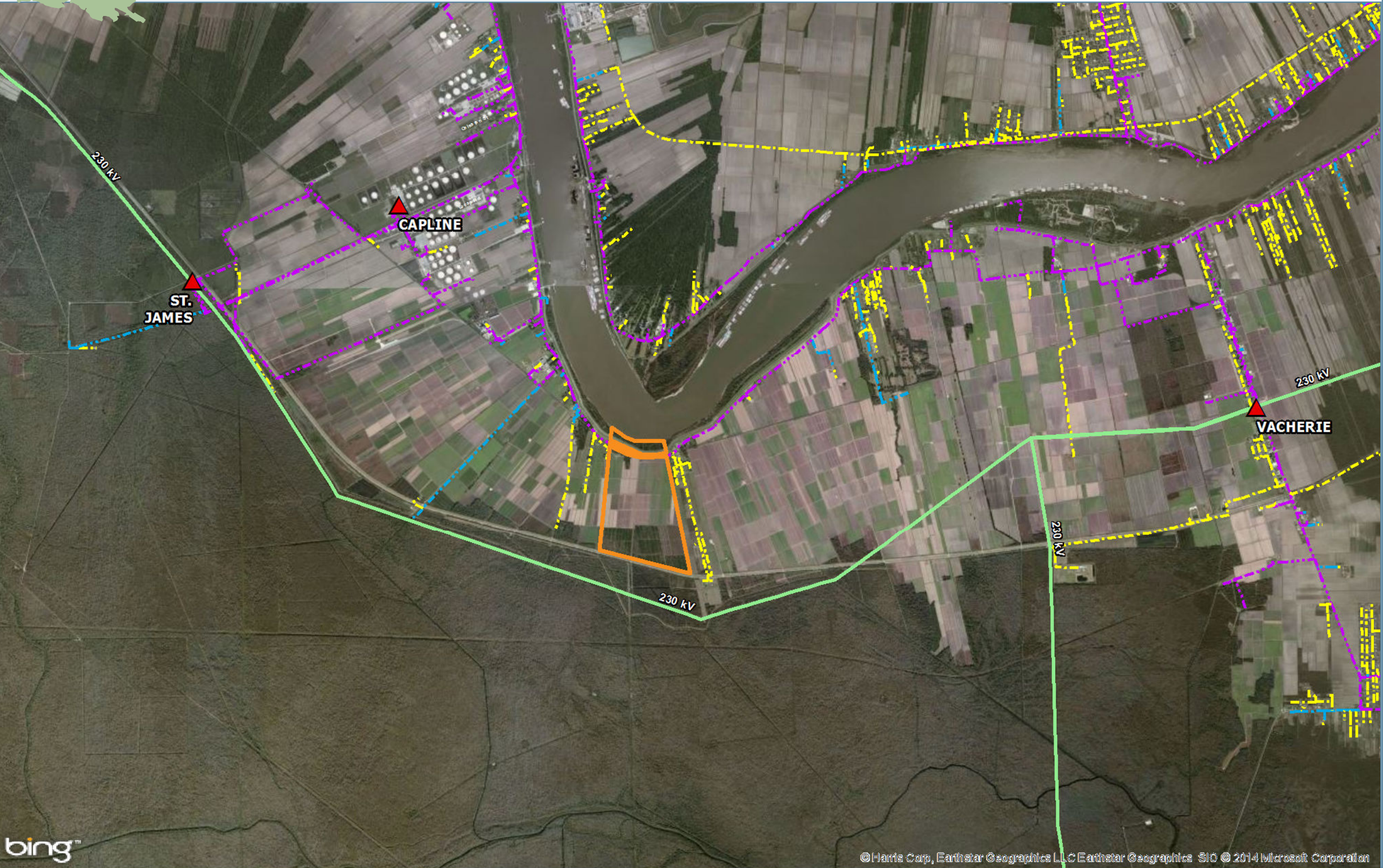
Rich Bend Plantation

Entergy's Electrical Infrastructure


St James Parish




View Extent





Legend


 Property Boundary

 Substation


Distribution


 3 Phase


 2 Phase


 Single Phase


Transmission


 500 kV


 345 kV

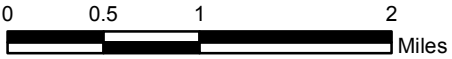
 230 kV

 161 kV

 138 kV

 115 kV

 69 kV



Source:
--Electrical: Entergy - Transmission & Substations, 3/2013; Distribution, 8/2013
--Aerial: Bing

Created By: Robert Guillot
Date: 04/2014

Note:
These drawings are provided merely to assist in economic development efforts. The Entergy Companies make no representations or warranties whatsoever regarding the accuracy or completeness of any information contained herein nor the condition or suitability of any properties. Users should direct inquiries about any property to the listing broker for that property.

1:63,360



800.542.2668 or 225.339.3224
Website: Entergy.com/laede
E-mail: laed@entergy.com

