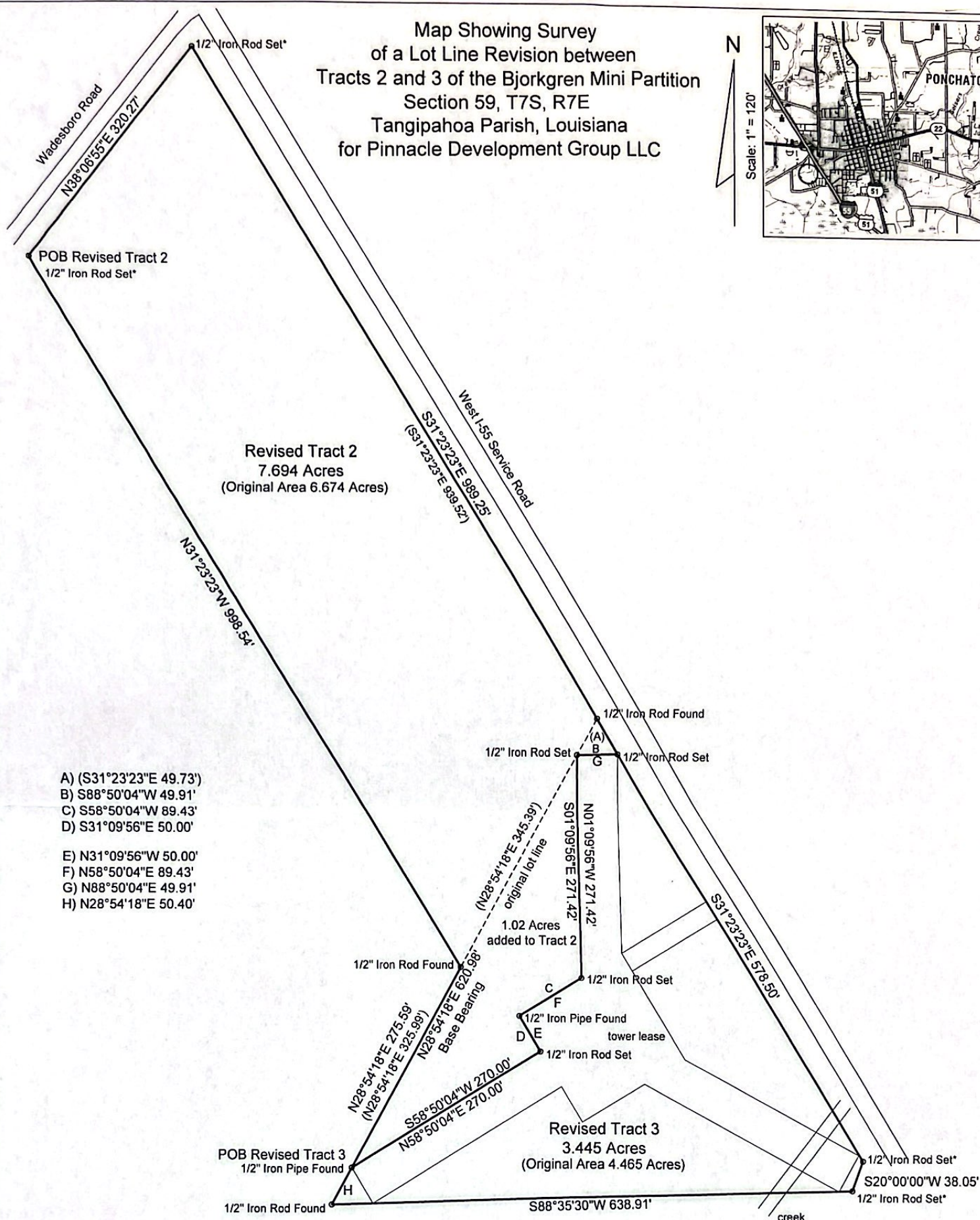
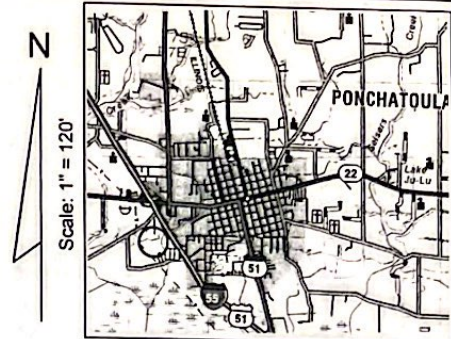


Map Showing Survey  
of a Lot Line Revision between  
Tracts 2 and 3 of the Bjorkgren Mini Partition  
Section 59, T7S, R7E  
Tangipahoa Parish, Louisiana  
for Pinnacle Development Group LLC



Reference, Bearing Basis and POB:  
Map of Bjorkgren Mini Partition of a 38.781 Acre Tract  
by Mark T. Chemay, PLS, Robert Barrilleaux and Associates, Inc.,  
dated November 2, 2017.  
Corners marked\* as per date of reference survey.  
Remainder of tower lease not part of this survey.  
Dimensions in parentheses are original tract dimensions.  
Flood Zone X, FIRM 22105C0440F, July 22, 2010.

POB Revised Tract 2 is N89°55'56"E 665.44', S00°30'00"E  
700.54', S89°57'41"E 654.37', North 1730.00', and  
N38°06'55"E 235.22' from the SW Corner of  
Section 59, T7S, R7E.

POB Revised Tract 3 is N89°55'56"E 665.44', S00°30'00"E  
700.54', S89°57'41"E 654.37', North 1730.00', N38°06'55"E  
235.22', S31°23'23"E 998.54' and S28°54'18"W 275.59' from  
the SW Corner of Section 59, T7S, R7E.



Mark T. Chemay  
Mark T. Chemay PLS 4560

1.7.2021  
January 7, 2021

I certify that this map represents an actual ground survey made  
by me and conforms to the Standards of Practice for Property  
Boundary Surveys as defined in LAC 46:XXI Chapter 29 for a Class C Survey.

Robert Barrilleaux  
and Associates, Inc.  
Engineers-Land Surveyors

42333 Deluxe Plaza #8  
Hammond, Louisiana 70403  
985-542-0391

Drawing: Pinnacle-Bjorkgren Lot Line Revision 59-7-7



Robert Barrilleaux and Associates, Inc.  
42333 Deluxe Plaza Suite 8  
Hammond, La. 70403  
Phone 985-542-0391  
Fax 985-542-6516

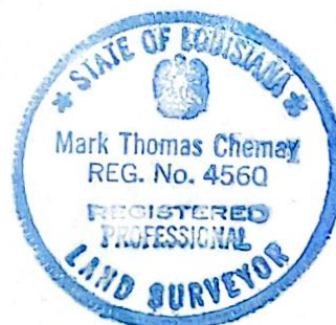
Legal Description  
Pinnacle Development Group LLC  
1.02 Acres added to Tract 2 Bjorkgren Mini Partition

Description of a certain parcel of land located in Section 59, T7S, R7E,  
Tangipahoa Parish, Louisiana, being more particularly described as follows:

Commencing at the Southwest Corner of Section 59, T7S, R7E, thence North 89 degrees 55 minutes 56 seconds East 665.44 feet, South 00 degree 30 minutes 00 seconds East 700.54 feet, North 1730.00 feet, North 38 degrees 06 minutes 55 seconds East 235.22 feet, South 31 degrees 23 minutes 23 seconds East 998.54 feet and South 28 degrees 54 minutes 18 seconds West 275.59 feet to the Point of Beginning;

Thence, North 28 degrees 54 minutes 18 seconds East 620.98 feet;  
Thence, South 31 degrees 23 minutes 23 seconds East 49.73 feet;  
Thence, South 88 degrees 50 minutes 04 seconds West 49.91 feet;  
Thence, South 01 degrees 09 minutes 56 seconds East 271.42 feet;  
Thence, South 58 degrees 50 minutes 04 seconds West 89.43 feet;  
Thence, South 31 degrees 09 minutes 56 seconds East 50.00 feet;  
Thence, South 58 degrees 50 minutes 04 seconds West 270.00 feet  
to the point of beginning, containing 1.02 Acres.

This description is derived from a Survey of a Lot Line Revision between Tracts 2 and 3 of the Bjorkgren Mini Partition for Pinnacle Development Group, LLC by Mark T. Chemay, PLS, Robert Barrilleaux and Associates, Inc., dated January 7, 2021.



*Mark T Chemay*  
1. 7. 2021