

COMMERCIAL SPACE FOR LEASE

# Laplace Center

1737 West Airline Highway, LaPlace, LA 70068

Presented By:

**Brady Becker**

O: 225.295.0800 | C: 985.703.1140  
bbecker@latterblum.com

**Mignon Richard Diaz, CCIM**

O: 504.569.9461 | C: 504.610.1038  
mignon@latterblum.com

**Alex Peet**

O: 504.525.1311 | C: 504.407.9012  
apeet@latterblum.com





### PROPERTY OVERVIEW

Unveil the potential of this prime retail/strip center property located off the bustling Airline Highway in LaPlace, Louisiana. Boasting exceptional visibility and high traffic, this modern space offers an ideal canvas for creating a captivating retail experience. With a fantastic parking ratio and proximity to major roadways, the property provides convenience for customers and tenants alike. The well-maintained exterior and flexible interior layout provide a versatile setting to showcase your brand. Embrace the opportunity to curate a thriving retail destination within this sought-after location. Join esteemed tenants such as Cash Saver's grocery store, Firestone, Dominos, and T-Mobile, and unlock the possibilities at 1737 West Airline Highway.

SPACES	LEASE RATE	SPACE SIZE
Unit 1613	\$16.00 SF/yr	1,407 - 2,171 SF
Unit 1617	\$16.00 SF/yr	764 - 2,171 SF

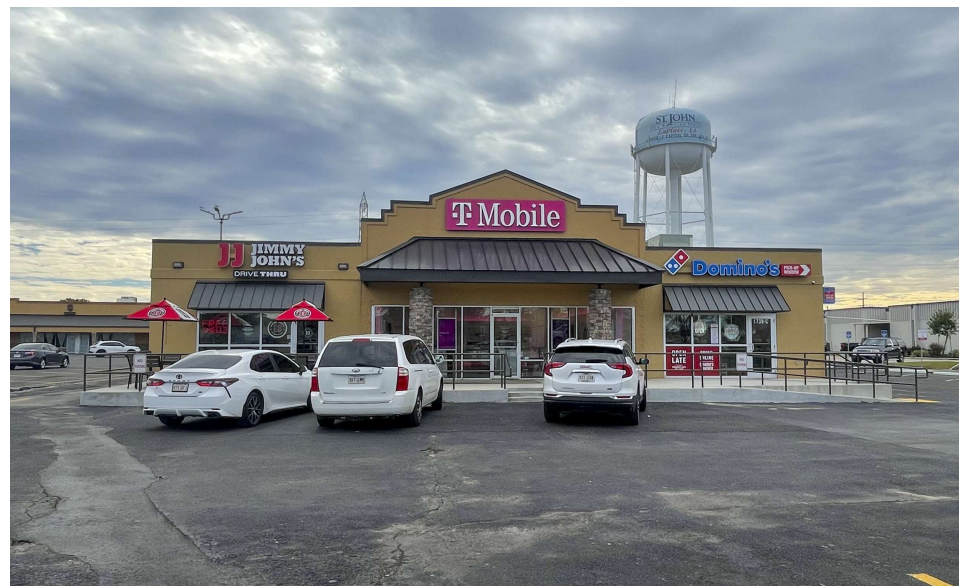
### LOCATION OVERVIEW

Discover the thriving community surrounding Laplace Center, a prime location for your retail/strip center venture. Situated in the heart of LaPlace, Louisiana, this bustling area offers high traffic and visibility, drawing in a diverse customer base. Nearby, residents and visitors enjoy convenient access to popular retailers, dining establishments, and entertainment options, including the nearby Belle Terre Plaza and numerous local shops. With its strategic location and vibrant surroundings, the area presents an enticing opportunity for businesses looking to establish a strong presence in this dynamic market. Don't miss the chance to become part of this flourishing commercial landscape at Laplace Center.

### PROPERTY HIGHLIGHTS

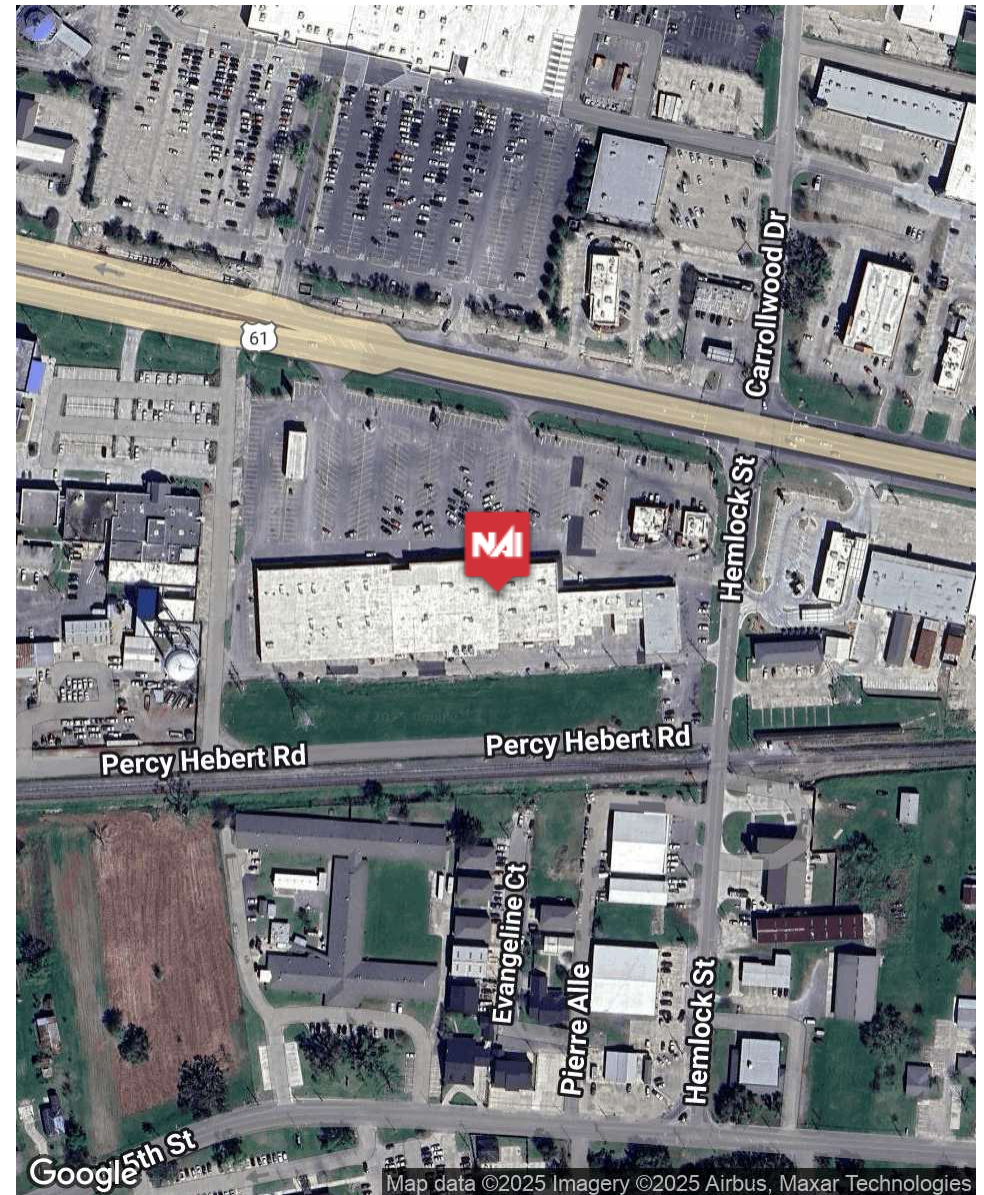
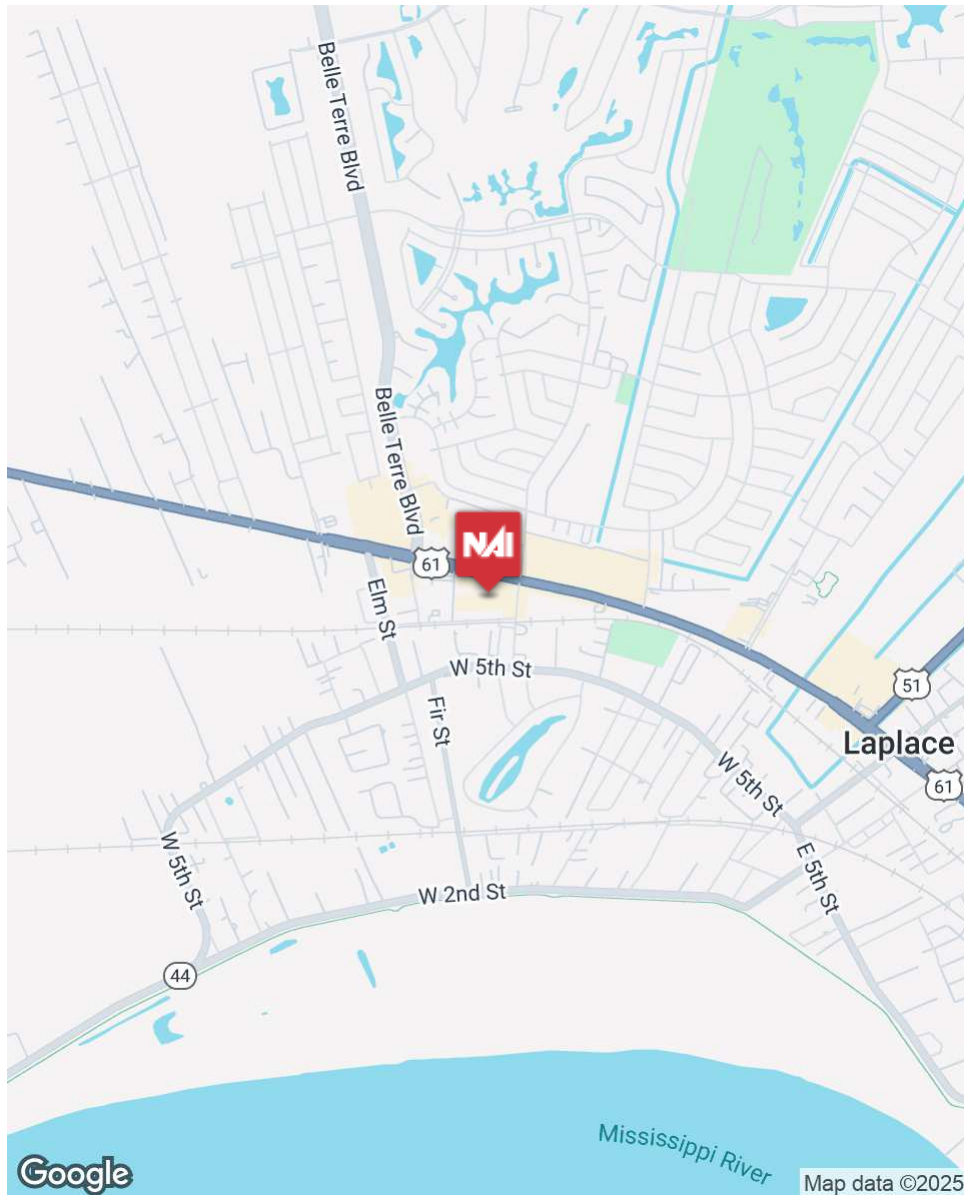
- Commercial Space Available in Laplace Center
- ±764 & ±1,407 SF Suites Available ( Suite 1613 / 1617)
- Center Tenants Include Cash Saver, Firestone, Dominos, T-Mobile, Family Dollar and more
- Excellent Exposure and Visibility in a High Traffic Area





INFORMATION SUBJECT TO VERIFICATION & NO LIABILITY FOR ERRORS & OMISSION ASSUMED. // LICENSED IN LOUISIANA





INFORMATION SUBJECT TO VERIFICATION & NO LIABILITY FOR ERRORS & OMISSION ASSUMED. // LICENSED IN LOUISIANA





### EDUCATION



No High School Diploma



35%

High School Graduate



13%

Bachelors/Grad/Prof Degree

### EMPLOYMENT



57%

White Collar



27%

Blue Collar



16%

Services

5.5%

Unemployment Rate

### KEY FACTS



16,623

Total Population



6,195

Total Households



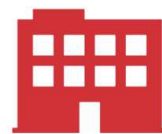
\$59,656

Median Household Income



Median Age

### BUSINESS



827

Total Businesses



7,083

Total Employees

### INCOME



\$51,216

Median Disposable Income



\$30,331

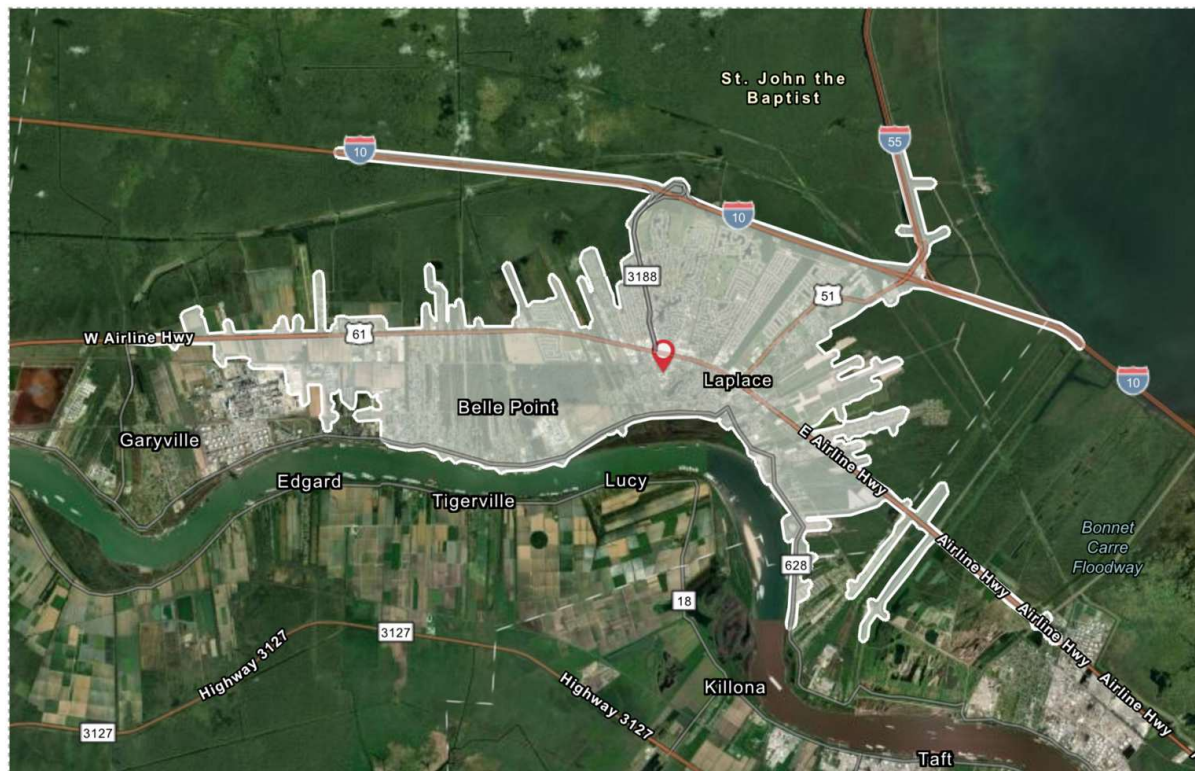
Per Capita Income



\$168,747

Median Net Worth

### Area Demographics (5 Minute Drivetime)



### EDUCATION



No High School Diploma



37%

High School Graduate



17%

Bachelors/Grad/Prof Degree

### EMPLOYMENT



60%

White Collar



27%

Blue Collar



13%

Services

5.5%

Unemployment Rate

### KEY FACTS



36,260

Total Population



13,564  
Total Households



\$64,454

Median Household Income



39.9

Median Age

### BUSINESS



1,314

Total Businesses



11,963

Total Employees

### INCOME



\$54,269

Median Disposable Income



\$31,459

Per Capita Income

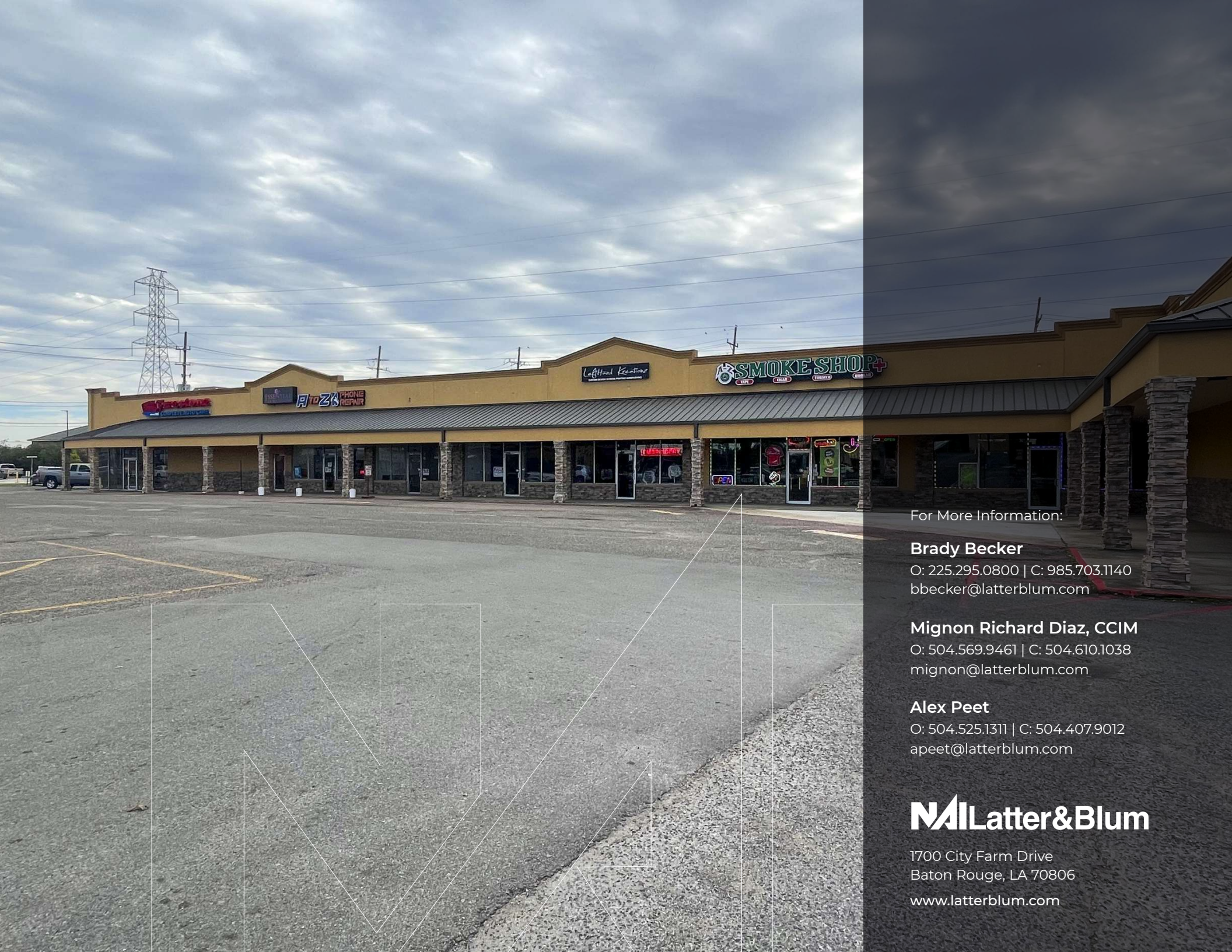


\$211,258

Median Net Worth

### Area Demographics (10 Minute Drivetime)





For More Information:

**Brady Becker**

O: 225.295.0800 | C: 985.703.1140  
bbecker@latterblum.com

**Mignon Richard Diaz, CCIM**

O: 504.569.9461 | C: 504.610.1038  
mignon@latterblum.com

**Alex Peet**

O: 504.525.1311 | C: 504.407.9012  
apeet@latterblum.com

**NALatter&Blum**

1700 City Farm Drive  
Baton Rouge, LA 70806  
[www.latterblum.com](http://www.latterblum.com)