



FRENCH MARKET
CORPORATION

Shops of the Colonnade *in the French Market District*

FOR LEASE | 912-916 DECATUR STREET

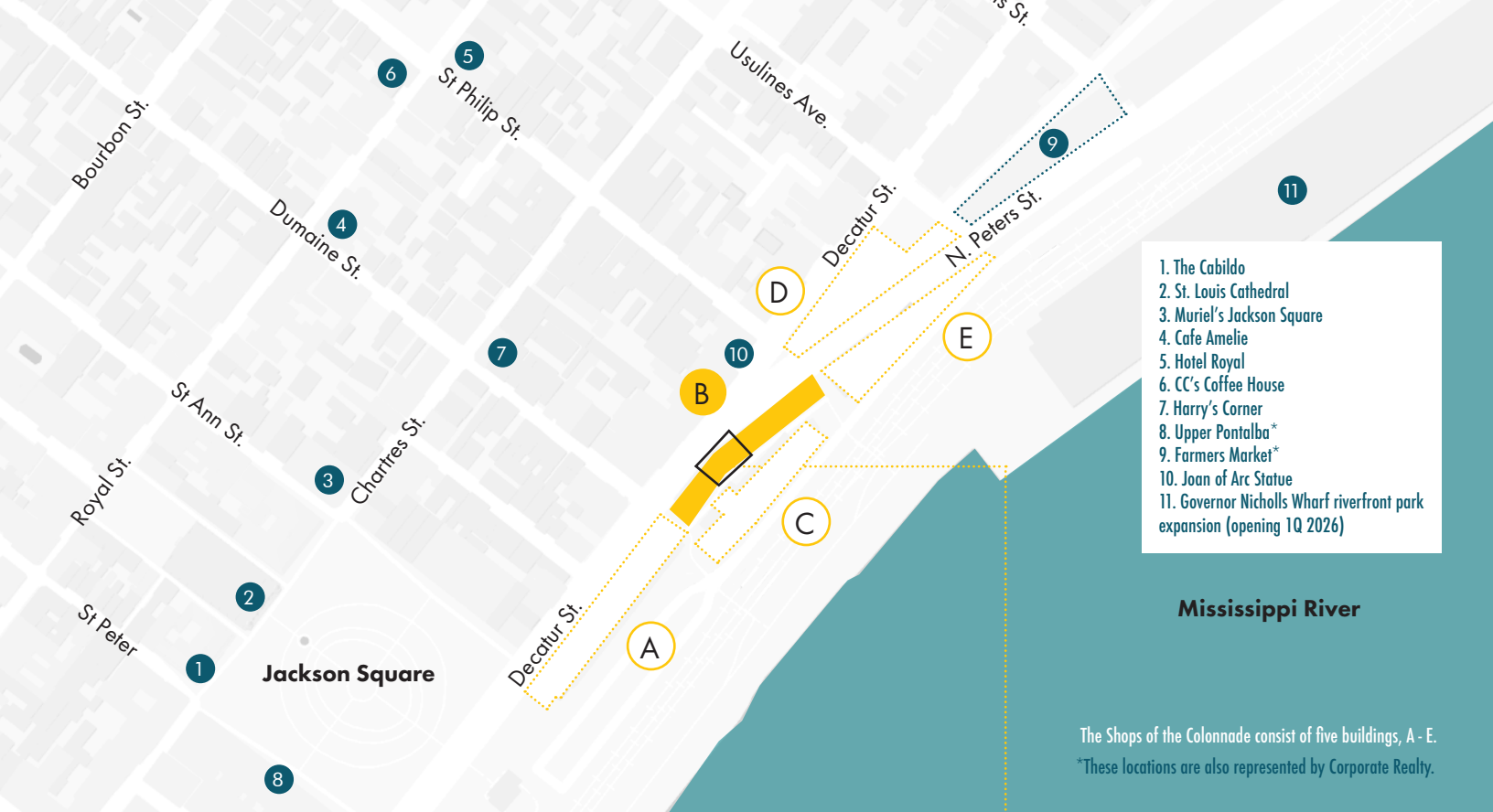
FOR MORE INFORMATION, CONTACT:

Austin Lavin ccim alavin@corp-realty.com
504.581.5005

• **Sydney Anderson** ccim sanderson@corp-realty.com
504.236.7507

SA SYDNEY ANDERSON REALTY

The information contained herein has been obtained from sources that we deem reliable. No representation or warranty is made as to the accuracy thereof, and it is submitted subject to errors, omissions, change of price, or other conditions, or withdrawal without notice. 10/2025



1. The Cabildo
2. St. Louis Cathedral
3. Muriel's Jackson Square
4. Cafe Amelie
5. Hotel Royal
6. CC's Coffee House
7. Harry's Corner
8. Upper Pontalba*
9. Farmers Market*
10. Joan of Arc Statue
11. Governor Nicholls Wharf riverfront park expansion (opening 1Q 2026)

Mississippi River

The Shops of the Colonnade consist of five buildings, A - E.
 *These locations are also represented by Corporate Realty.

912-916 DECATUR STREET

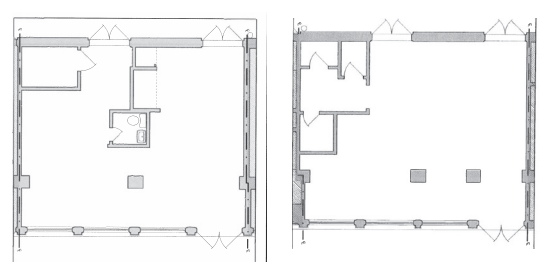
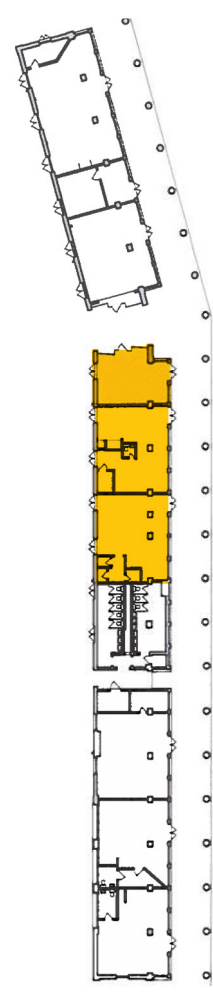
Establish your business at the center of one of New Orleans' most iconic and vibrant districts. This high visibility, showcase retail space that can be leased as one unit or divided into two separate units is located across from the renowned Joan of Arc Statue. Surrounded by classic French Quarter architecture and immersed in the area's lively ambiance, the site boasts exceptional foot traffic from both locals and tourists year-round. This is an exceptional space that blends charm with commercial appeal. This site is located near a primary access point to the expanded riverfront park, a scenic stretch along the Mississippi River.

- 912**
SIZE: 682 sf (approx.) **RATE:** \$5,115.00 per month*+
- 916**
SIZE: 687 sf (approx.) **RATE:** \$5,145.00 per month*+
- 912 + 916**
SIZE: 1,368 sf (approx.) **RATE:** \$9,120.00 per month*+

DELIVERED: As is

MARKETED FOR LEASE: November 7, 2025

*Inclusive of property taxes, insurance, and common area maintenance
 + All leases include a Percentage Rent component.



912
682 SF

916
687 SF

FRENCH MARKET
 CORPORATION

The French Market District is comprised of the shops of the Upper Pontalba, Shops of the Colonnade, the Craft Bazaar, the Farmers & Flea Markets, Oscar Dunn Park, and the Moon Walk. The district is managed by the French Market Corporation.