

Offering Summary

Sale Price:	\$295,000
Lot Size:	0.64 Acres
Price / Acre:	\$460,938

Property Summary

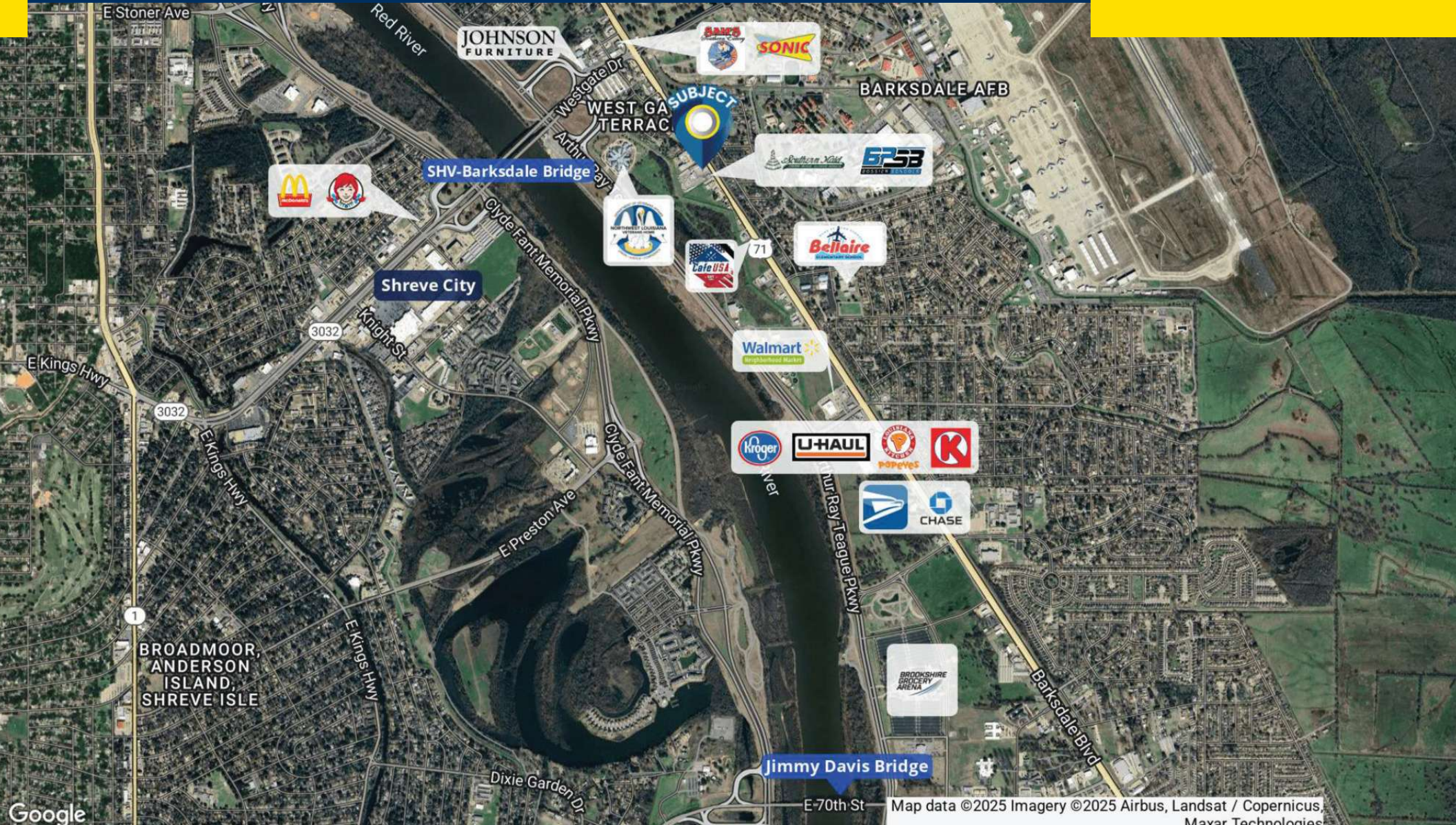
.64 acre lot for sale in a desirable location along Barksdale Boulevard. This property features a paved parking lot covering half the parcel and includes a billboard that generates a steady income of \$250 per month. Previously a gas station, the site was professionally demolished, with tanks removed by Jones Environmental in 2023-2024. The adjacent property is also available, contact agent for details. Strategically situated just 0.5 miles south of Barksdale Air Force Base and the Shreveport-Barksdale Bridge and 3 miles north of the Jimmy Davis Bridge, this lot offers convenient access to Shreveport. Additionally, I-20 is a mere 2 miles to the north, enhancing connectivity.



Sealy Real Estate Services
333 Texas Street, Suite 1050
Shreveport, LA 71101
318.222.8700
www.sealynet.com

Patrick Beauvais
Direct 318.698.1115
Mobile 318.458.2800
patrickb@sealynet.com

All information set forth in this brochure has been obtained from the owner, personal observation, or other reliable sources. Sealy Real Estate Services, LLC does not guarantee the accuracy of this information and makes no representations or warranties, expressed or implied, in this brochure. Information contained herein is subject to change without notice.



Sealy Real Estate Services
333 Texas Street, Suite 1050
Shreveport, LA 71101
318.222.8700
www.sealynet.com

Patrick Beauvais
Direct 318.698.1115
Mobile 318.458.2800
patrickb@sealynet.com

All information set forth in this brochure has been obtained from the owner, personal observation, or other reliable sources. Sealy Real Estate Services, LLC does not guarantee the accuracy of this information and makes no representations or warranties, expressed or implied, in this brochure. Information contained herein is subject to change without notice.