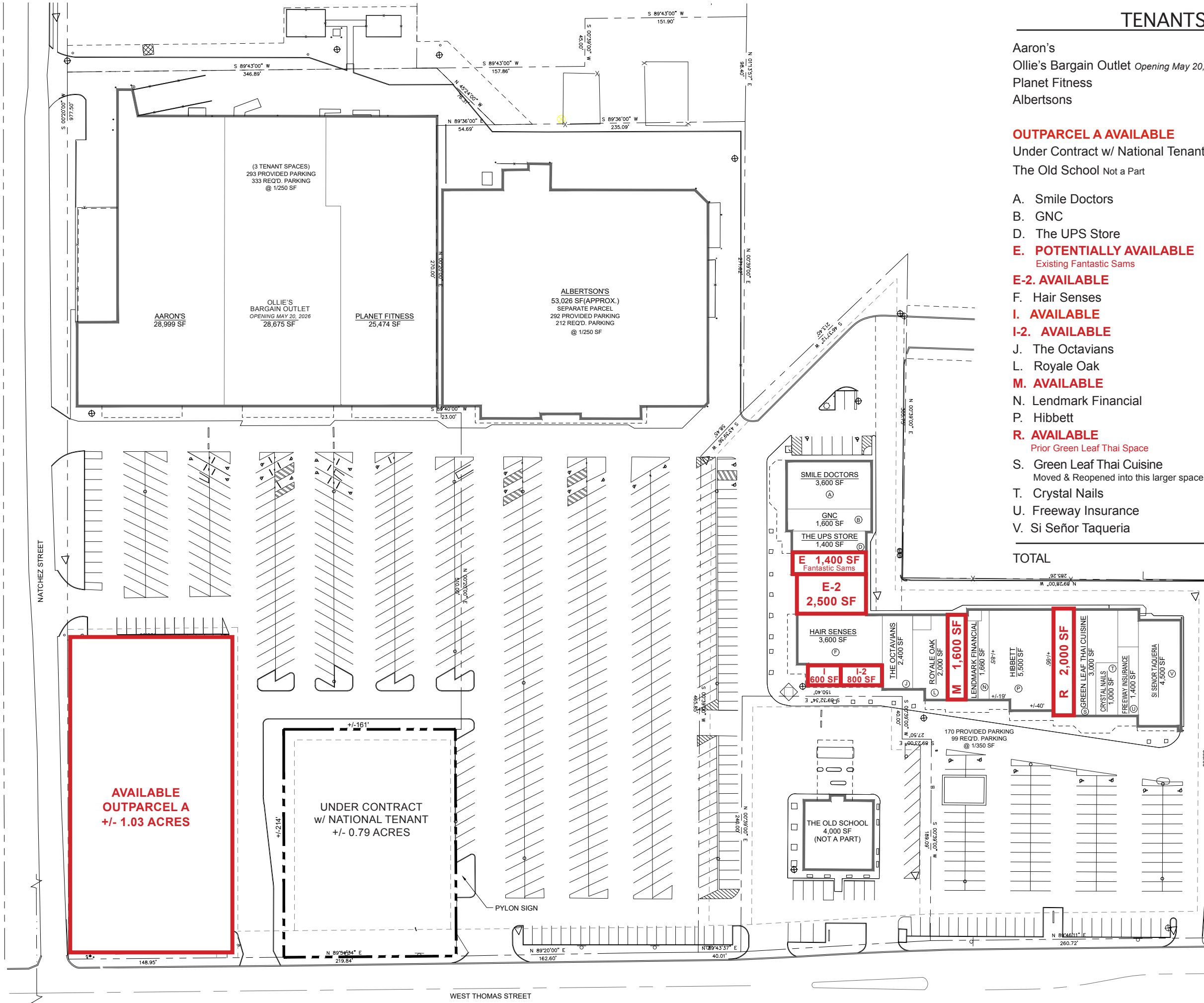


This plan shall not be deemed to be a warranty, representation or agreement on the part of the Landlord that the Shopping Center will be, or will continue to be as indicated hereon without change. Landlord may, from time to time, increase, reduce and/or change the parking areas or common areas as Landlord shall deem proper. Landlord reserves the right to change the general layout, and to make alterations and additions to, and to build additional stories on the building in which the Premises are contained or which otherwise comprise the Shopping Center and to make any other changes as may be required by applicable code or authorities. This plan is subject to change and is not a warranty, representation or agreement that prospective tenants or anchor stores shown hereon will be tenants or anchor stores at the locations shown or at any other location in the Shopping Center.



### TENANTS

Aaron's	28,999 SF
Ollie's Bargain Outlet <i>Opening May 20, 2026</i>	28,675 SF
Planet Fitness	25,474 SF
Albertsons	53,026 SF
<b>OUTPARCEL A AVAILABLE</b>	<b>+/- 1.03 AC</b>
Under Contract w/ National Tenant	+/- 0.79 AC
The Old School Not a Part	4,000 SF
A. Smile Doctors	3,600 SF
B. GNC	1,600 SF
D. The UPS Store	1,400 SF
<b>E. POTENTIALLY AVAILABLE</b>	<b>1,400 SF</b>
<i>Existing Fantastic Sams</i>	
<b>E-2. AVAILABLE</b>	<b>2,500 SF</b>
F. Hair Senses	3,600 SF
<b>I. AVAILABLE</b>	<b>600 SF</b>
<b>I-2. AVAILABLE</b>	<b>800 SF</b>
J. The Octavians	2,400 SF
L. Royale Oak	2,000 SF
<b>M. AVAILABLE</b>	<b>1,600 SF</b>
N. Lendmark Financial	1,660 SF
P. Hibbett	5,500 SF
<b>R. AVAILABLE</b>	<b>2,000 SF</b>
<i>Prior Green Leaf Thai Space</i>	
S. Green Leaf Thai Cuisine	3,000 SF
<i>Moved &amp; Reopened into this larger space</i>	
T. Crystal Nails	1,000 SF
U. Freeway Insurance	1,400 SF
V. Si Señor Taqueria	4,550 SF
 <b>TOTAL</b>	 <b>179,784 SF</b>

711 CHURCH STREET  
Ocean Springs, MS 38564

**alred stolarski architects**

SEVILLE PLAZA SHOPPING CENTER  
WEST THOMAS STREET (U.S. 190) AT NATCHEZ STREET  
HAMMOND, LOUISIANA

---

**stirling**

109 Northpark Blvd, Suite 300  
Covington, LA 70433  
(985) 898-2022 109

JOB NUMBER: 2024-15  
DATE: 04-13-25  
REVISED:  
DRAWN BY: JVC  
CHECKED BY:

---

NOT FOR PRELIMINARY CONSTRUCTION

SHEET

## SP-23