



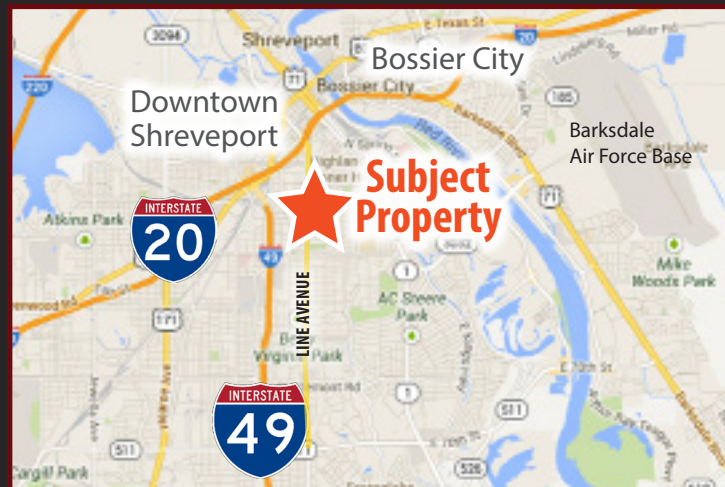
LINE OLIVE BUILDING OFFICE SPACE FOR LEASE

745 OLIVE STREET, SHREVEPORT, LA 71104

- Multi-Tenanted Medical/Office Building
- Conveniently Located on the Southeast Corner of Line Avenue & Olive Street
- Easy Access to I-20, I-49 & Downtown Shreveport
- Full service gross lease
- Professionally Managed by Vintage Realty
- Multi-Zoned Heat/Air
- Elevator Access
- Electronic Monitoring
- Free Parking in Rear of Building
- Covered Parking Spaces available at \$25 per month

AVAILABLE SPACE:

- Suite 109: 1,160 rsf, \$14.50 psf
- Suite 112: 315 rsf, \$14.50 psf
- Suite 114A: 121 rsf, \$14.50 psf
- Suite 200: 1,614 rsf, \$14.50 psf
- Suite 201: 561 rsf, \$14.50 psf
- Suite 204: 1,926 rsf, \$16.00 psf



For more information, contact:

Claire Childs, CCIM | 318.222.2244

cchilds@vintagerealty.com | vintagerealty.com

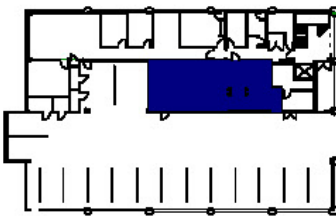
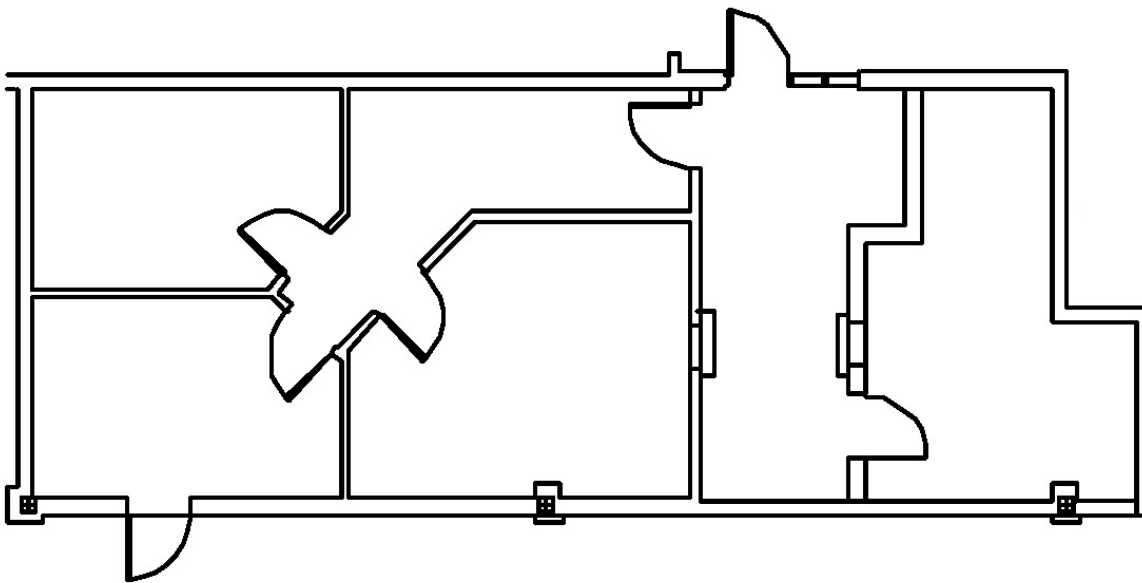
ALL INFORMATION CONTAINED HEREIN IS BELIEVED TO BE ACCURATE, BUT IS NOT WARRANTED AND NO LIABILITY OF ERRORS OR OMISSIONS IS ASSURED BY EITHER THE PROPERTY OWNER OR VINTAGE REALTY COMPANY OR ITS AGENTS AND EMPLOYEES. PRICES AS STATED HEREIN AND PRODUCT AVAILABILITY IS SUBJECT TO CHANGE AND/OR SALE OR LEASE WITHOUT PRIOR NOTICE, AND ALL SIZES AND DIMENSIONS ARE SUBJECT TO CORRECTION. REV 10/2025



LINE OLIVE SPACE FOR LEASE

745 OLIVE STREET
SHREVEPORT, LA 71104

AVAILABLE:
SUITE 109 - 1,160 Square Feet



For information, please contact:

Claire Childs, CCIM | 318-222-2244

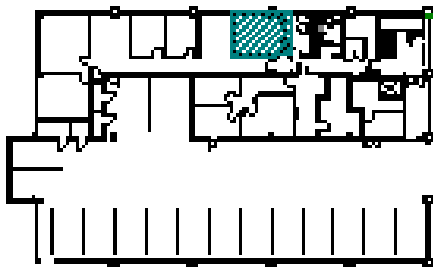
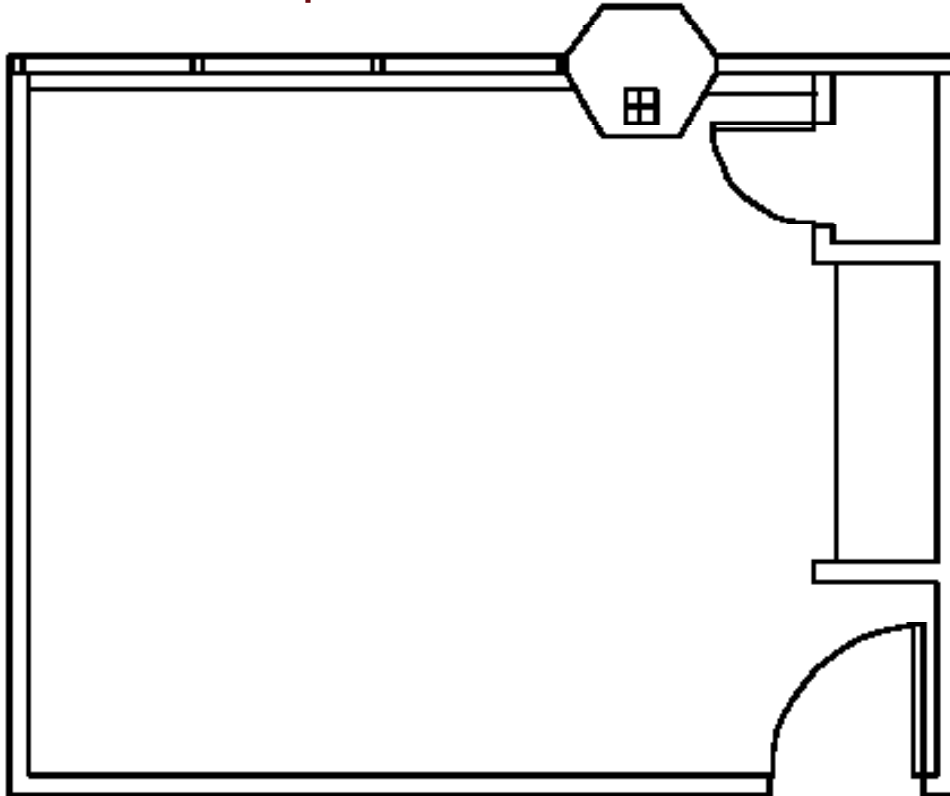
cchilds@vintagerealty.com | vintagerealty.com

ALL INFORMATION CONTAINED HEREIN IS BELIEVED TO BE ACCURATE, BUT IS NOT WARRANTED AND NO LIABILITY OF ERRORS OR OMISSIONS IS ASSURED BY EITHER THE PROPERTY OWNER OR VINTAGE REALTY COMPANY OR ITS AGENTS AND EMPLOYEES. PRICES AS STATED HEREIN AND PRODUCT AVAILABILITY IS SUBJECT TO CHANGE AND/OR SALE OR LEASE WITHOUT PRIOR NOTICE, AND ALL SIZES AND DIMENSIONS ARE SUBJECT TO CORRECTION. 10/2025

LINE OLIVE SPACE FOR LEASE

745 OLIVE STREET
SHREVEPORT, LA 71104

AVAILABLE:
SUITE 112 - 315 Square Feet



For information, please contact:

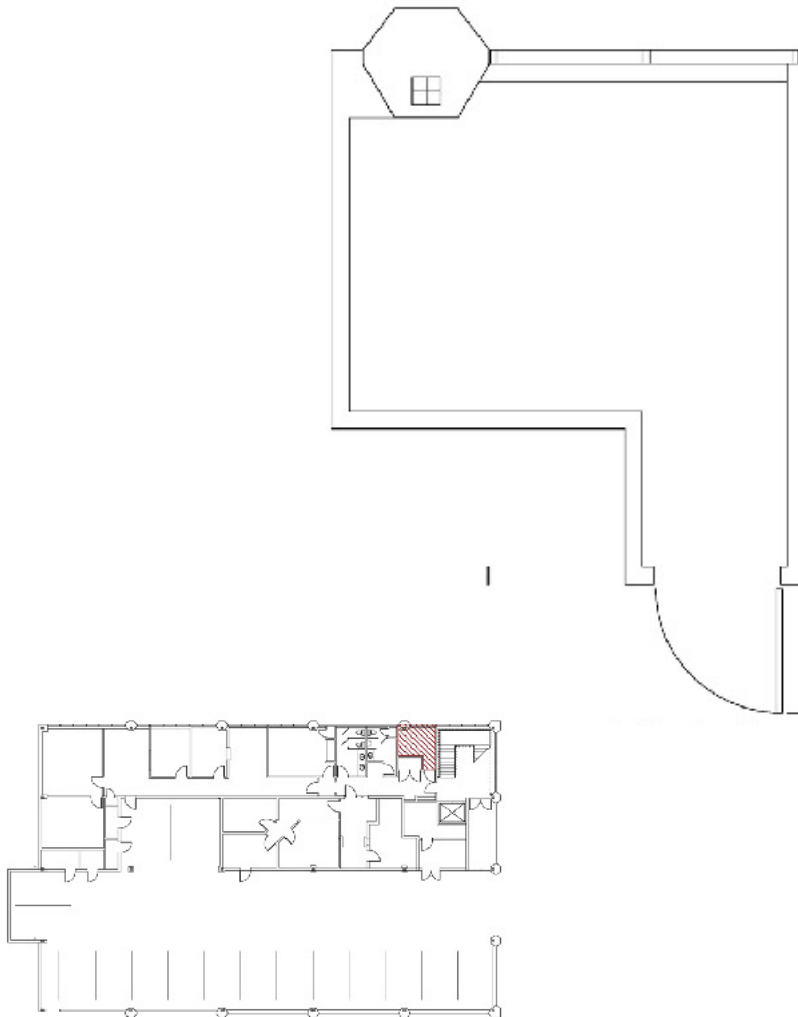
Claire Childs, CCIM | 318-222-2244
cchilds@vintagerealty.com | vintagerealty.com

ALL INFORMATION CONTAINED HEREIN IS BELIEVED TO BE ACCURATE, BUT IS NOT WARRANTED AND NO LIABILITY OF ERRORS OR OMISSIONS IS ASSURED BY EITHER THE PROPERTY OWNER OR VINTAGE REALTY COMPANY OR ITS AGENTS AND EMPLOYEES. PRICES AS STATED HEREIN AND PRODUCT AVAILABILITY IS SUBJECT TO CHANGE AND/OR SALE OR LEASE WITHOUT PRIOR NOTICE, AND ALL SIZES AND DIMENSIONS ARE SUBJECT TO CORRECTION. 10/2025

LINE OLIVE SPACE FOR LEASE

745 OLIVE STREET
SHREVEPORT, LA 71104

AVAILABLE: SUITE 114A - 121 Square Feet



For information, please contact:

Claire Childs, CCIM | 318-222-2244

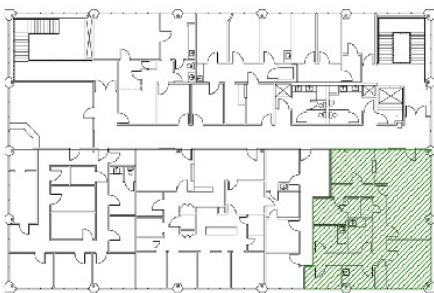
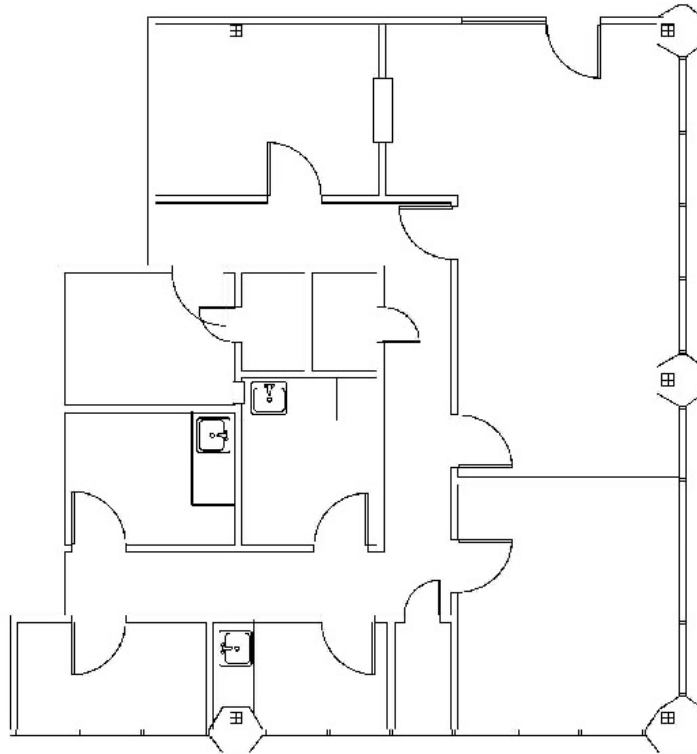
cchilds@vintagerealty.com | vintagerealty.com

ALL INFORMATION CONTAINED HEREIN IS BELIEVED TO BE ACCURATE, BUT IS NOT WARRANTED AND NO LIABILITY OF ERRORS OR OMISSIONS IS ASSURED BY EITHER THE PROPERTY OWNER OR VINTAGE REALTY COMPANY OR ITS AGENTS AND EMPLOYEES. PRICES AS STATED HEREIN AND PRODUCT AVAILABILITY IS SUBJECT TO CHANGE AND/OR SALE OR LEASE WITHOUT PRIOR NOTICE, AND ALL SIZES AND DIMENSIONS ARE SUBJECT TO CORRECTION. 10/2025

LINE OLIVE SPACE FOR LEASE

745 OLIVE STREET
SHREVEPORT, LA 71104

AVAILABLE:
SUITE 200 - 1,614 Square Feet



For information, please contact:

Claire Childs, CCIM | 318-222-2244

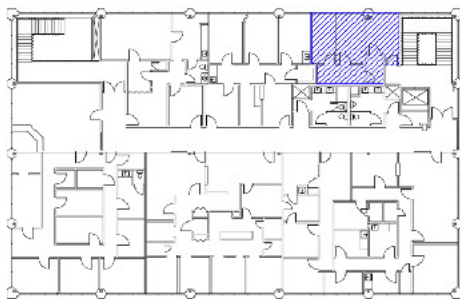
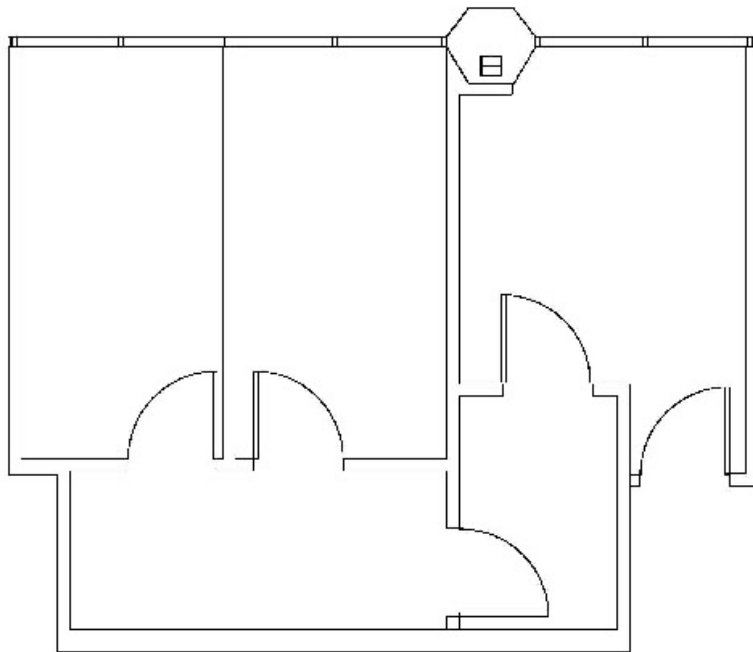
cchilds@vintagerealty.com | vintagerealty.com

ALL INFORMATION CONTAINED HEREIN IS BELIEVED TO BE ACCURATE, BUT IS NOT WARRANTED AND NO LIABILITY OF ERRORS OR OMISSIONS IS ASSURED BY EITHER THE PROPERTY OWNER OR VINTAGE REALTY COMPANY OR ITS AGENTS AND EMPLOYEES. PRICES AS STATED HEREIN AND PRODUCT AVAILABILITY IS SUBJECT TO CHANGE AND/OR SALE OR LEASE WITHOUT PRIOR NOTICE, AND ALL SIZES AND DIMENSIONS ARE SUBJECT TO CORRECTION. 10/2025

LINE OLIVE SPACE FOR LEASE

745 OLIVE STREET
SHREVEPORT, LA 71104

AVAILABLE:
SUITE 201 - 561 Square Feet



For information, please contact:

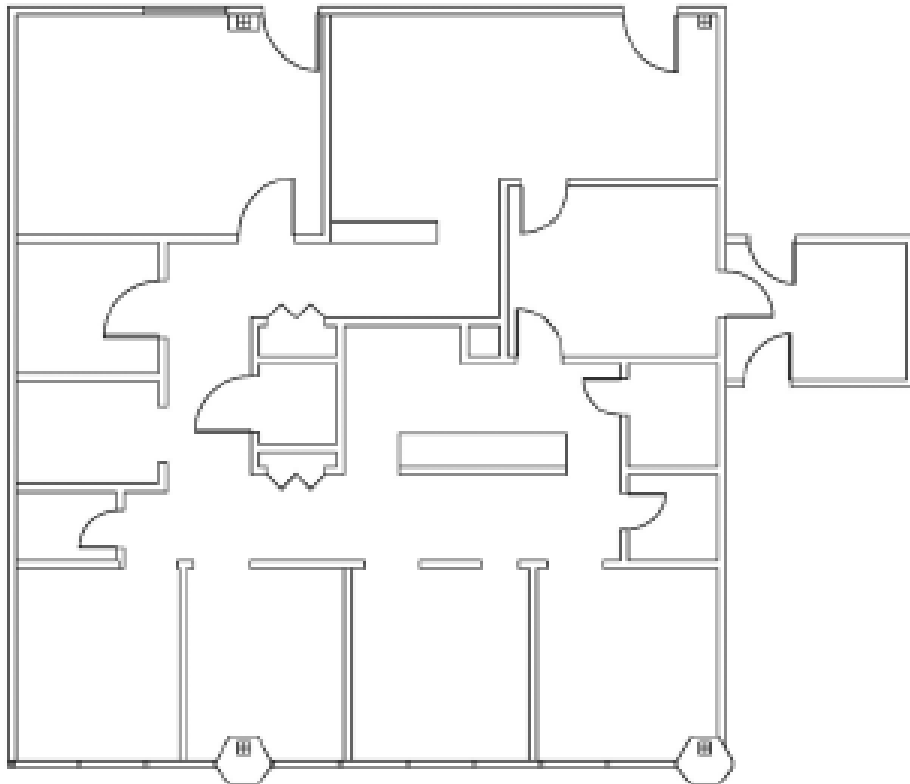
Claire Childs, CCIM | 318-222-2244
cchilds@vintagerealty.com | vintagerealty.com

ALL INFORMATION CONTAINED HEREIN IS BELIEVED TO BE ACCURATE, BUT IS NOT WARRANTED AND NO LIABILITY OF ERRORS OR OMISSIONS IS ASSURED BY EITHER THE PROPERTY OWNER OR VINTAGE REALTY COMPANY OR ITS AGENTS AND EMPLOYEES. PRICES AS STATED HEREIN AND PRODUCT AVAILABILITY IS SUBJECT TO CHANGE AND/OR SALE OR LEASE WITHOUT PRIOR NOTICE, AND ALL SIZES AND DIMENSIONS ARE SUBJECT TO CORRECTION. 10/2025

LINE OLIVE SPACE FOR LEASE

745 OLIVE STREET
SHREVEPORT, LA 71104

AVAILABLE:
SUITE 204 - 1,926 Square Feet



For information, please contact:

Claire Childs, CCIM | 318-222-2244
cchilds@vintagerealty.com | vintagerealty.com

ALL INFORMATION CONTAINED HEREIN IS BELIEVED TO BE ACCURATE, BUT IS NOT WARRANTED AND NO LIABILITY OF ERRORS OR OMISSIONS IS ASSURED BY EITHER THE PROPERTY OWNER OR VINTAGE REALTY COMPANY OR ITS AGENTS AND EMPLOYEES. PRICES AS STATED HEREIN AND PRODUCT AVAILABILITY IS SUBJECT TO CHANGE AND/OR SALE OR LEASE WITHOUT PRIOR NOTICE, AND ALL SIZES AND DIMENSIONS ARE SUBJECT TO CORRECTION. 10/2025

LINE OLIVE SPACE FOR LEASE

745 OLIVE STREET
SHREVEPORT, LA 71104



For information, please contact:

Claire Childs, CCIM | 318-222-2244
cchilds@vintagerealty.com | vintagerealty.com

ALL INFORMATION CONTAINED HEREIN IS BELIEVED TO BE ACCURATE, BUT IS NOT WARRANTED AND NO LIABILITY OF ERRORS OR OMISSIONS IS ASSURED BY EITHER THE PROPERTY OWNER OR VINTAGE REALTY COMPANY OR ITS AGENTS AND EMPLOYEES. PRICES AS STATED HEREIN AND PRODUCT AVAILABILITY IS SUBJECT TO CHANGE AND/OR SALE OR LEASE WITHOUT PRIOR NOTICE, AND ALL SIZES AND DIMENSIONS ARE SUBJECT TO CORRECTION. 10/2025