



ELMWOOD RETAIL SPACE FOR LEASE

1000 ELMWOOD PARK BLVD. SUITE B | JEFFERSON, LA



BUILDING AREA

Suite B offers 18,885 square feet of flexible open floor plan with 130 parking spaces. The property is situated across the street from Elmwood Shopping Center, the largest open air shopping center in Louisiana.

PARKING

130 spaces

ZONING

Industrial Mixed Use: I-MU

FEATURES

Anchor Space
Finished Ceilings: 14' - 21'
Highly Desirable End Cap Space
Central Air Conditioning

LEASE RATE

\$12.50 per square foot on a net lease basis. Lease rate does not include utilities, property expenses or building services

Max J. Derbes, Inc.
REALTORS ■

CONTACT
GERARD E. HENRY, SIOR

OFFICE 504.733.4555
gerard@maxderbes.com

Max J. Derbes, Inc.
5440 Mounes Street, Ste 100
New Orleans, LA 70123





ELMWOOD RETAIL SPACE FOR LEASE

1000 ELMWOOD PARK BLVD. SUITE B | JEFFERSON, LA



Max J. Derbes, Inc.
REALTORS ■

CONTACT
GERARD E. HENRY, SIOR

OFFICE 504.733.4555
gerard@maxderbes.com

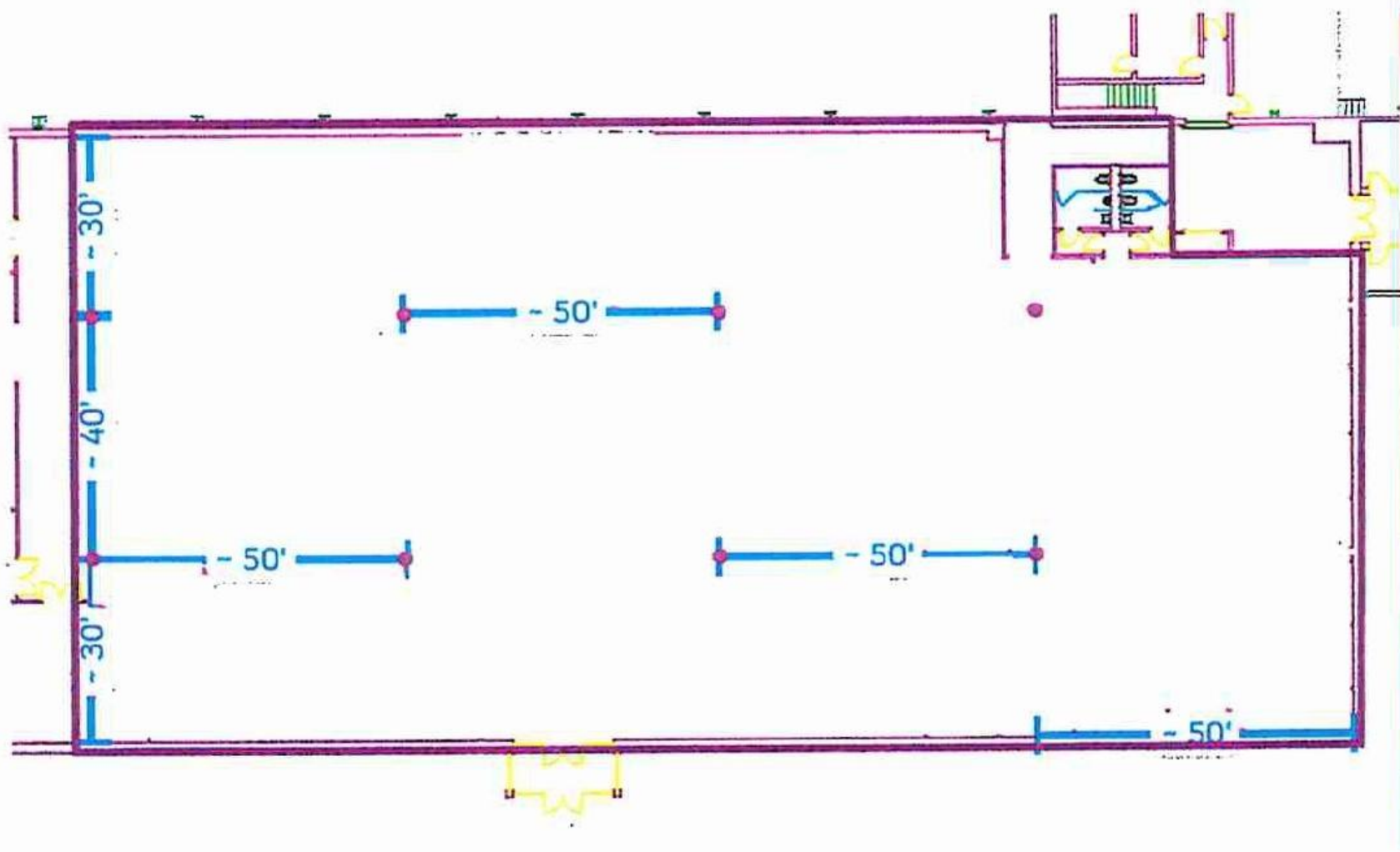
Max J. Derbes, Inc.
5440 Mounes Street, Ste 100
New Orleans, LA 70123





ELMWOOD RETAIL SPACE FOR LEASE

1000 ELMWOOD PARK BLVD. SUITE B | JEFFERSON, LA



Max J. Derbes, Inc.
REALTORS ■

CONTACT
GERARD E. HENRY, SIOR

OFFICE 504.733.4555
gerard@maxderbes.com

Max J. Derbes, Inc.
5440 Mounes Street, Ste 100
New Orleans, LA 70123

