

Prime Sublease Available

400 POYDRAS TOWER

New Orleans, LA

Victoria Waguespack | 504.525.1410 | victoriaw@beaibox.com



PROPERTY SUMMARY



Property Description

Introducing an exceptional subleasing opportunity at 400 Poydras St. The building features a convenient location with access to major transportation routes, fostering a dynamic environment for businesses to thrive. Tenants will appreciate top-notch facilities, on-site parking, and responsive property management services. Whether for retail, office, or mixed-use purposes, this versatile property provides an unparalleled opportunity for businesses seeking a prime location in the heart of the city.

Please contact agent for more details.

Property Amenities

- Regions Bank
- Subway
- Sundry Shop
- Greens To Go

Victoria Waguespack

504.525.1410
victoriaw@beaubox.com

Broker of Record, Beau J. Box; Licensed by the Louisiana Real Estate Commission, Mississippi Real Estate Commission, Alabama Real Estate Commission and Florida Real Estate Commission, USA. This information has been secured from sources we believe to be reliable, but we make no representations or warranties, expressed or implied, as to the accuracy of the information. References to square footage or age are approximate. Buyer must verify the information and bears all risk for any inaccuracies. © Beau Box Commercial Real Estate. 5500 Bankers Avenue, Baton Rouge, LA 70808 | 225-237-3343. | May 30, 2024

Offering Summary

Lease Rate:	\$15.00 SF/yr (Full Service)
Number Of Units:	1
Available SF:	2,667 SF
Lot Size:	54,053 SF
Building Size:	714,776 SF

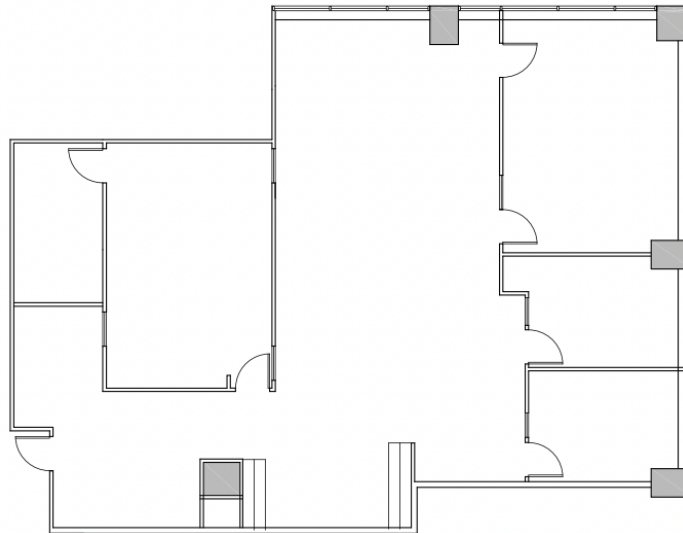
Demographics	0.3 Miles	0.5 Miles	1 Mile
Total Households	717	2,921	9,955
Total Population	1,065	4,255	15,845

FLOOR PLAN

SUITE 1505

2,328 USF

2,677 RSF



Victoria Waguespack
504.525.1410
victoriaw@beaubox.com

Broker of Record, Beau J. Box; Licensed by the Louisiana Real Estate Commission, Mississippi Real Estate Commission, Alabama Real Estate Commission and Florida Real Estate Commission, USA. This information has been secured from sources we believe to be reliable, but we make no representations or warranties, expressed or implied, as to the accuracy of the information. References to square footage or age are approximate. Buyer must verify the information and bears all risk for any inaccuracies. © Beau Box Commercial Real Estate. 5500 Bankers Avenue, Baton Rouge, LA 70808 | 225-237-3343. | May 30, 2024



400 Poydras St
New Orleans, LA 70130

ADDITIONAL PHOTOS



Victoria Waguespack
504.525.1410
victoriaw@beaibox.com

Broker of Record, Beau J. Box; Licensed by the Louisiana Real Estate Commission, Mississippi Real Estate Commission, Alabama Real Estate Commission and Florida Real Estate Commission, USA. This information has been secured from sources we believe to be reliable, but we make no representations or warranties, expressed or implied, as to the accuracy of the information. References to square footage or age are approximate. Buyer must verify the information and bears all risk for any inaccuracies. © Beau Box Commercial Real Estate. 5500 Bankers Avenue, Baton Rouge, LA 70808 | 225-237-3343. | May 30, 2024



400 Poydras St
New Orleans, LA 70130

LOCATION MAP



Victoria Waguespack
504.525.1410
victoriaw@beaibox.com

Broker of Record, Beau J. Box; Licensed by the Louisiana Real Estate Commission, Mississippi Real Estate Commission, Alabama Real Estate Commission and Florida Real Estate Commission, USA. This information has been secured from sources we believe to be reliable, but we make no representations or warranties, expressed or implied, as to the accuracy of the information. References to square footage or age are approximate. Buyer must verify the information and bears all risk for any inaccuracies. © Beau Box Commercial Real Estate. 5500 Bankers Avenue, Baton Rouge, LA 70808 | 225-237-3343. | May 30, 2024



MEET THE TEAM



Victoria Waguespack

Agent

Direct: 504.525.1410 **Cell:** 504.583.1119
victoriaw@beaubox.com

Victoria Waguespack
504.525.1410
victoriaw@beaubox.com

Broker of Record, Beau J. Box; Licensed by the Louisiana Real Estate Commission, Mississippi Real Estate Commission, Alabama Real Estate Commission and Florida Real Estate Commission, USA. This information has been secured from sources we believe to be reliable, but we make no representations or warranties, expressed or implied, as to the accuracy of the information. References to square footage or age are approximate. Buyer must verify the information and bears all risk for any inaccuracies. © Beau Box Commercial Real Estate. 5500 Bankers Avenue, Baton Rouge, LA 70808 | 225-237-3343. | May 30, 2024

